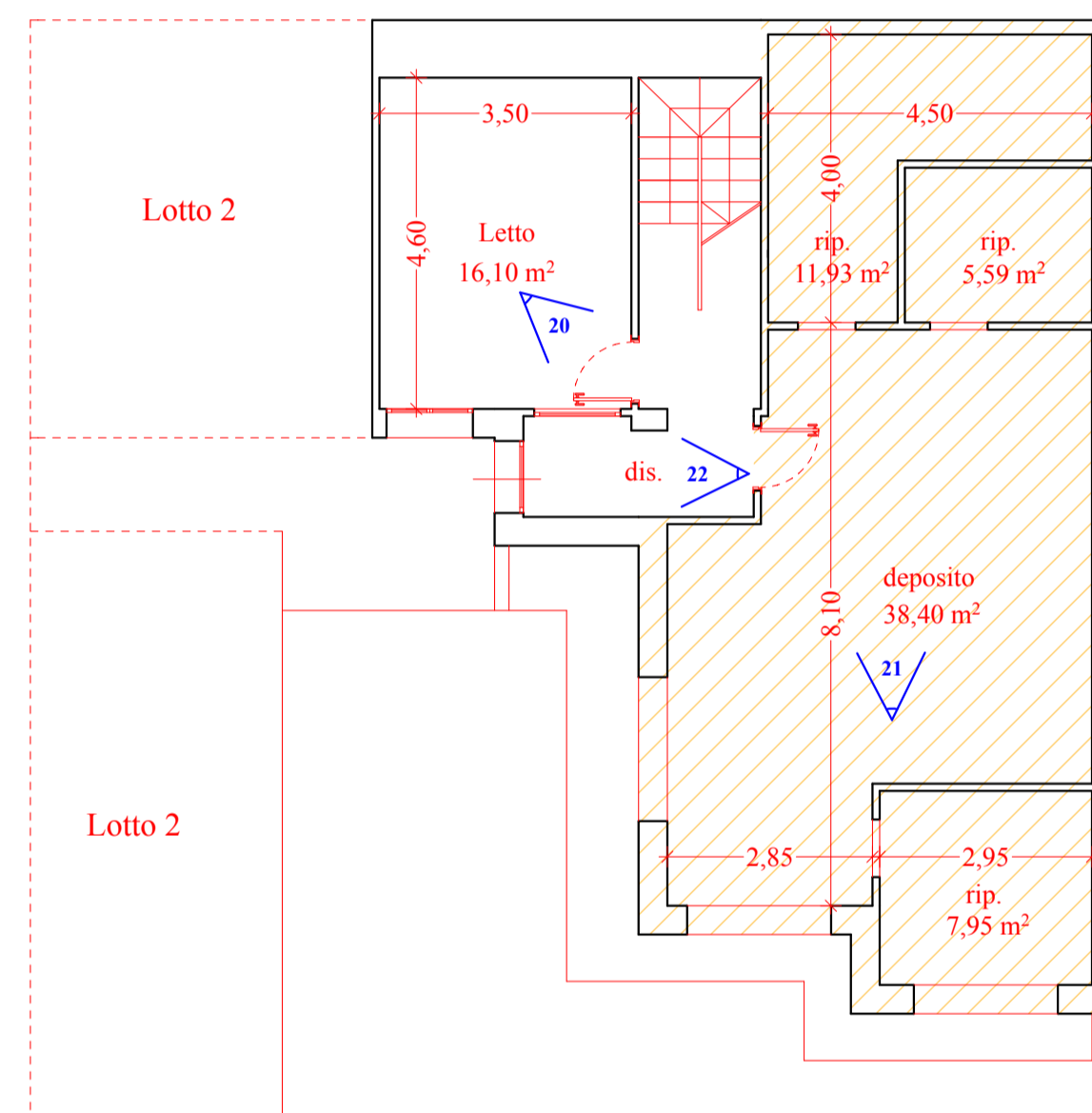


# Tav. 3

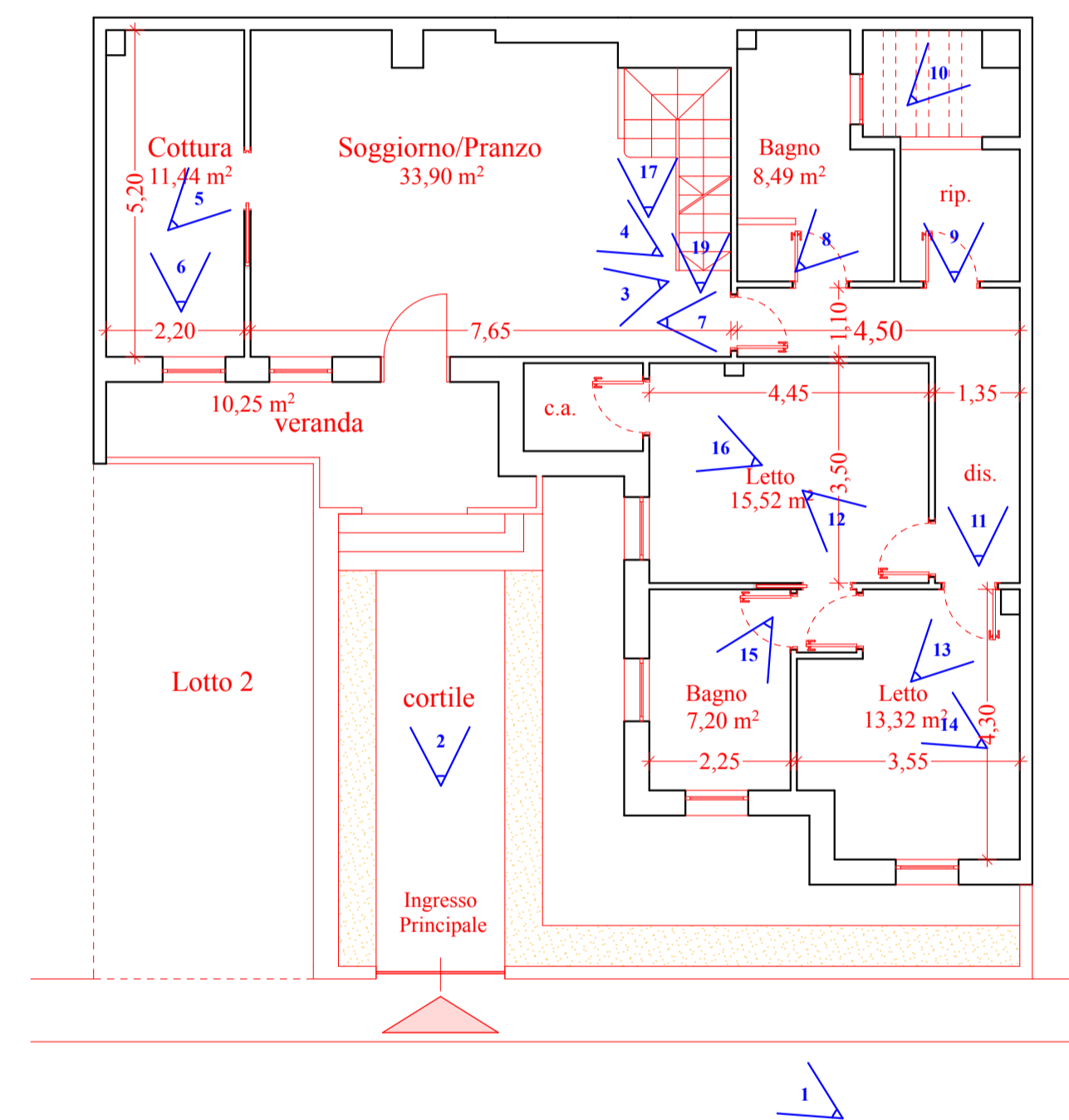
Comune di Cisternino  
Pianta Rilievo Metrico - Architettonico Scala 1:100 - Lotto 1

## PIANO INTERRATO h. 2.60



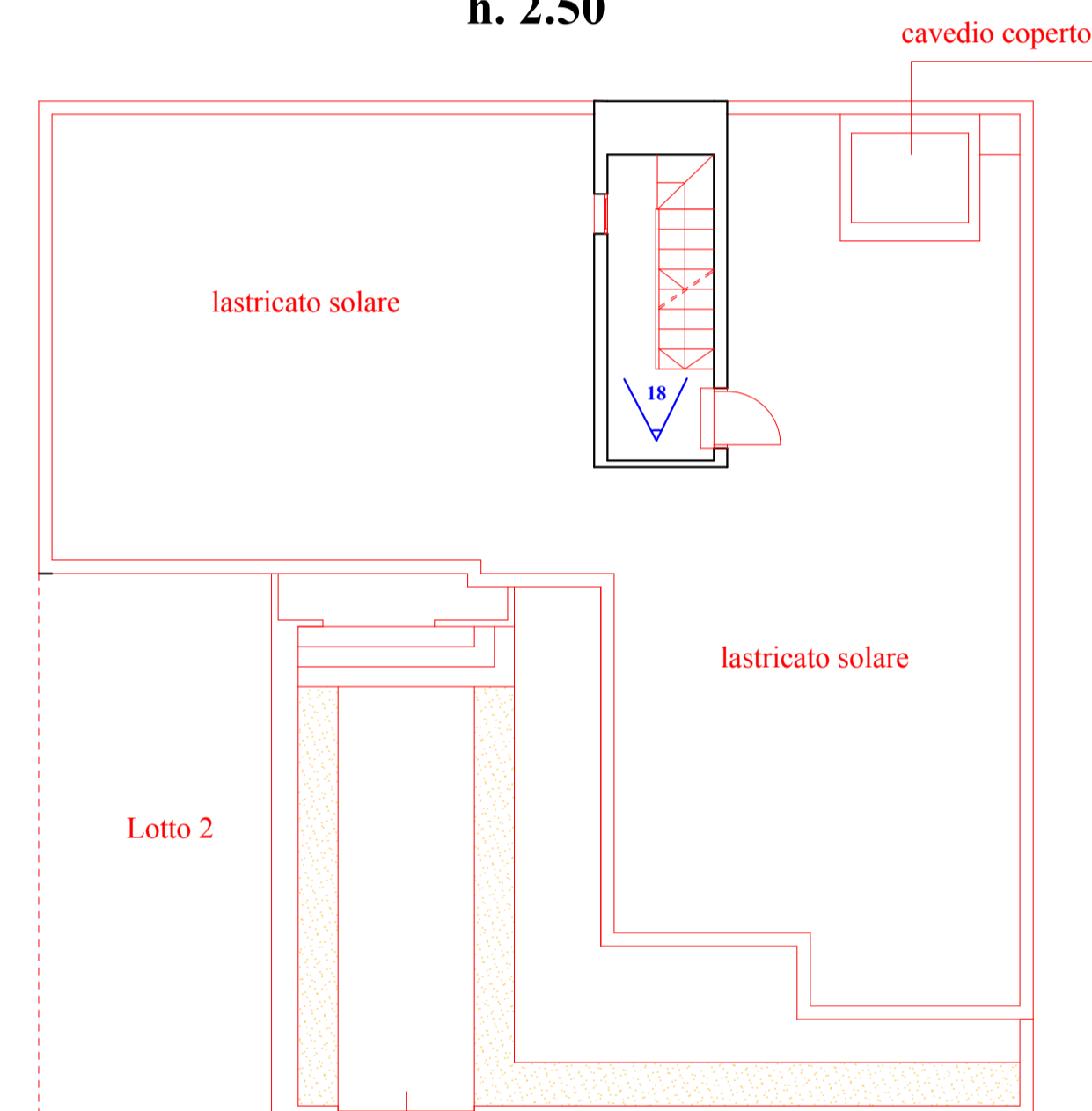
ZONA A RUSTICO

## PIANO TERRA h. 2.70



Via Delle Cave civ. 63

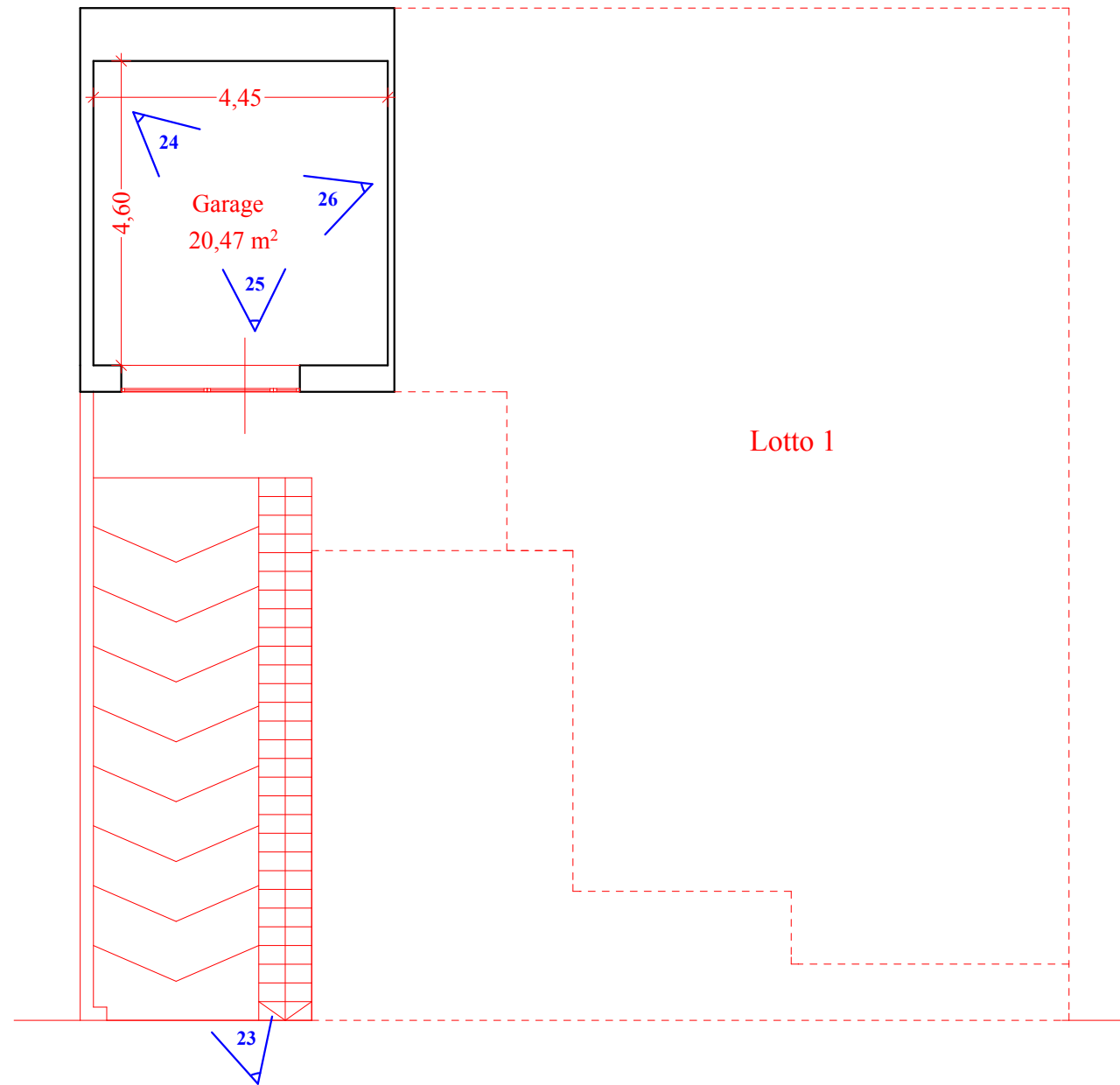
## PIANO PRIMO h. 2.50



### DATI METRICI

Superficie Lorda PT:	133,34 m <sup>2</sup>
Superficie Lorda PS1:	110,91 m <sup>2</sup>
Superficie Utile:	128,68 m <sup>2</sup>
Superficie Utile Vani Accessori:	74,57 m <sup>2</sup>
<small>(bagni, ripostigli, cabina armadio, disimpegni, veranda)</small>	

## PIANO INTERRATO h. 2.60



### DATI METRICI

Superficie Lorda PS1:	27,55 m <sup>2</sup>
Superficie Utile:	20,47 m <sup>2</sup>
Superficie Utile Vani Accessori: (area di manovra)	11,37 m <sup>2</sup>

Via Delle Cave civ. 63