

TRIBUNALE DI BOLZANO – ESECUZIONI IMMOBILIARI

Procedimento esecutivo R.G.	83/2025
Oggetto	CTU - DOCUMENTAZIONE FOTOGRAFICA

D.) DOCUMENTAZIONE FOTOGRAFICA



P.ED. 772 - Vista da Sudest



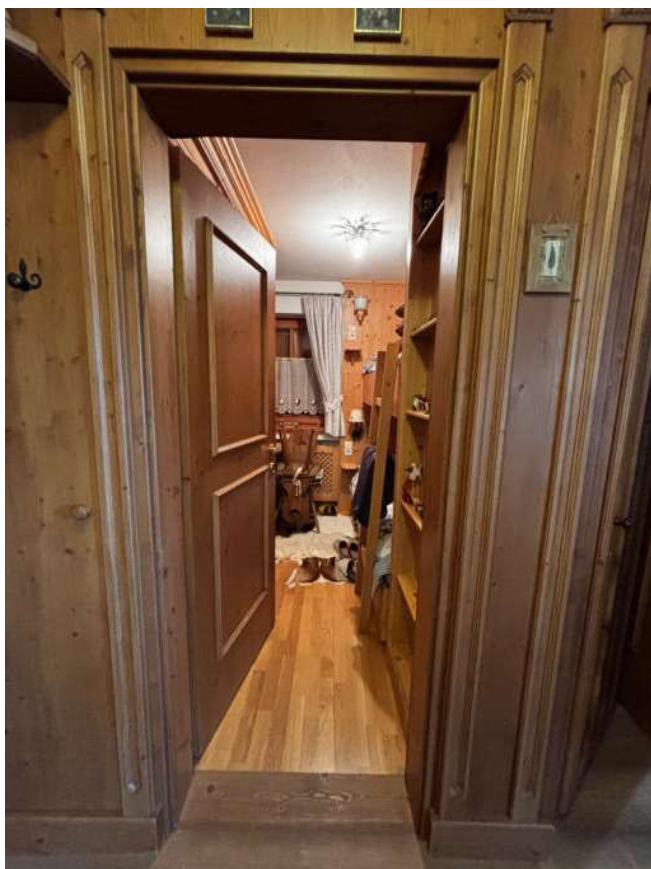
P.ED. 772 - Vista da Sud



P.ED. 772 - Vista da Nordovest



P.ED. 772 - Vista da Nord



Interno (Ripostiglio) P.ED. 772 P.M. 5



Interno (Ripostiglio) P.ED. 772 P.M. 5



Interno (Doccia + WC 01) P.ED. 772 P.M. 5



Interno (Doccia + WC 02) P.ED. 772 P.M. 5



Interno (Doccia + WC 02) P.ED. 772 P.M. 5



Interno (Doccia + WC 02) P.ED. 772 P.M. 5



Interno (Cucina-Soggiorno) P.ED. 772 P.M. 5



Interno (Cucina-Soggiorno) P.ED. 772 P.M. 5



Interno (Cucina-Soggiorno) P.ED. 772 P.M. 5



Interno (Cucina-Soggiorno) P.ED. 772 P.M. 5



Interno (Stanza 01) P.ED. 772 P.M. 5



Interno (Stanza 01) P.ED. 772 P.M. 5



Interno (Stanza 02) P.ED. 772 P.M. 5



Interno (Stanza 02) P.ED. 772 P.M. 5



Balcone in direzione Nord P.ED. 772 P.M. 5



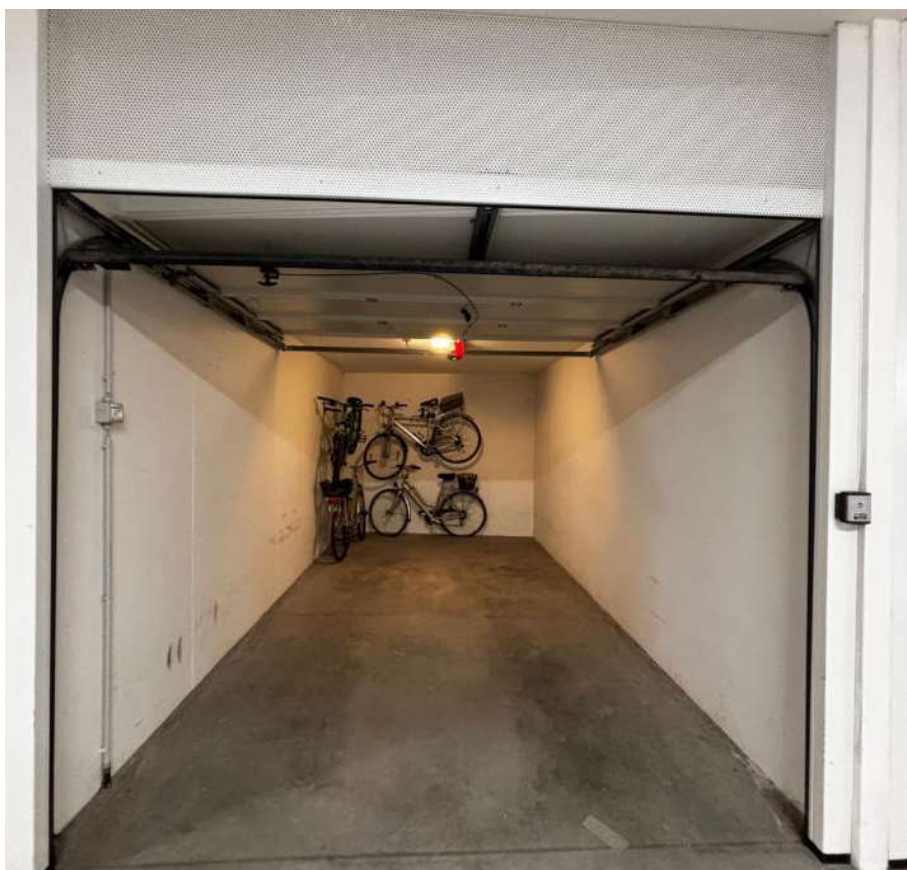
Balcone in direzione Nordovest P.ED. 772 P.M. 5



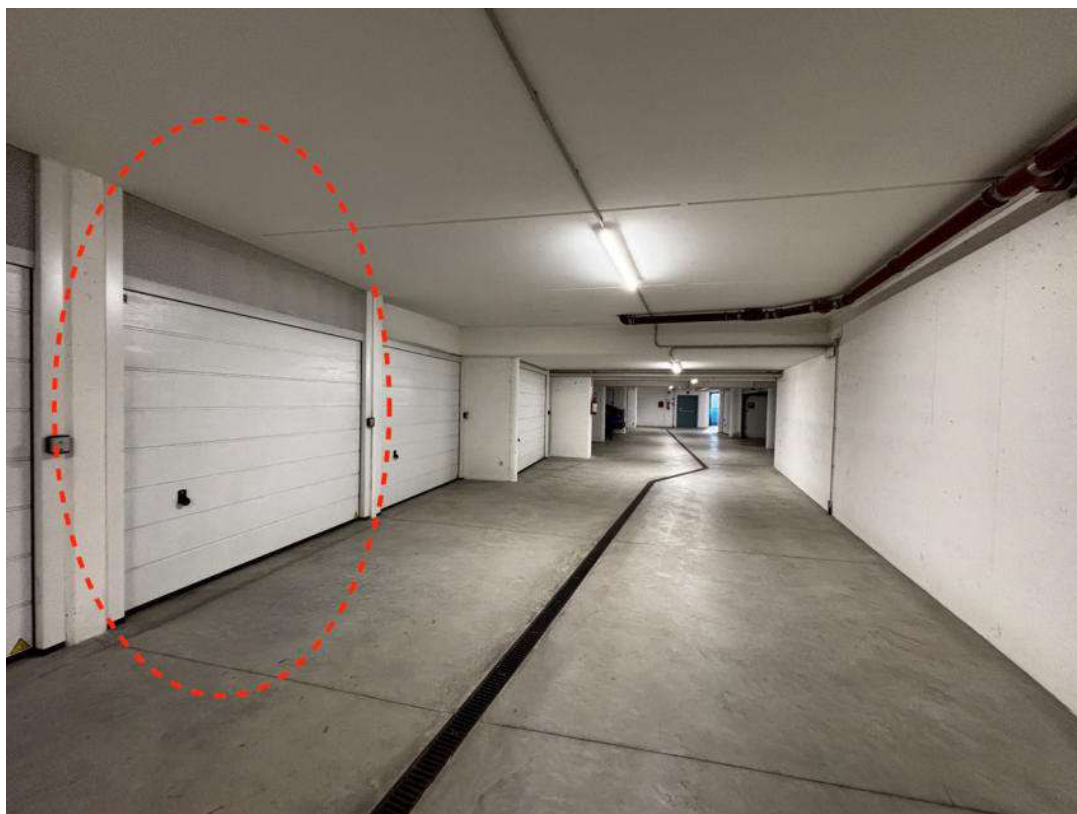
Cantina P.ED. 772 P.M. 5



Cantina P.ED. 772 P.M. 5



Garage P.ED. 772 P.M. 38



Garage P.ED. 772 P.M. 38