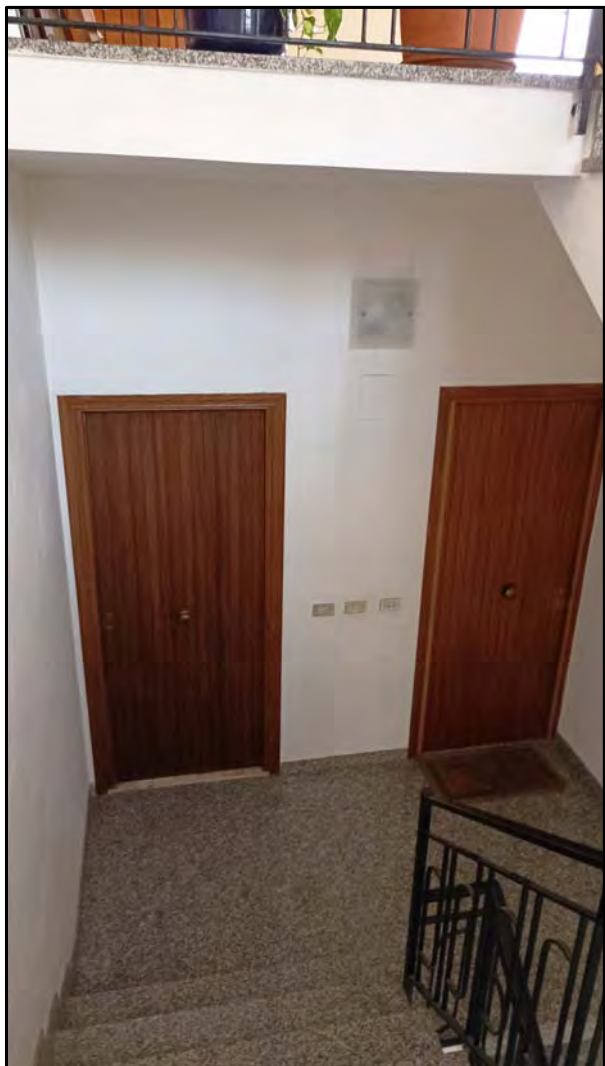


LOTTO N. 2
Unità' immobiliare f. 9 part. 837 sub. 3



Portoncino di accesso



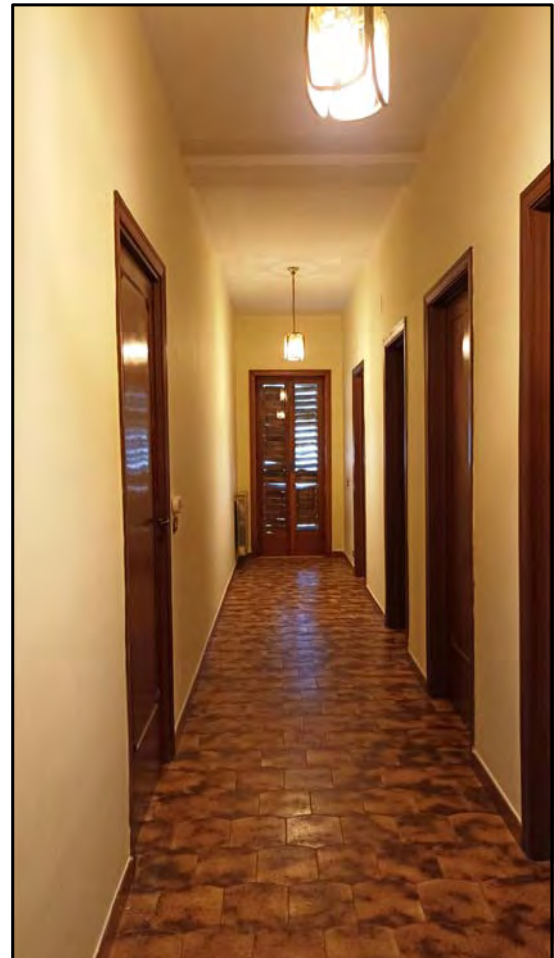
Ingresso



Camera Letto Matrimoniale



Cucina



Corridoio



Soggiorno - Pranzo



Camera Letto Singolo 1



Bagno



W.C.



Camera Letto Singolo 2



Balcone sulla Via F. Crispi

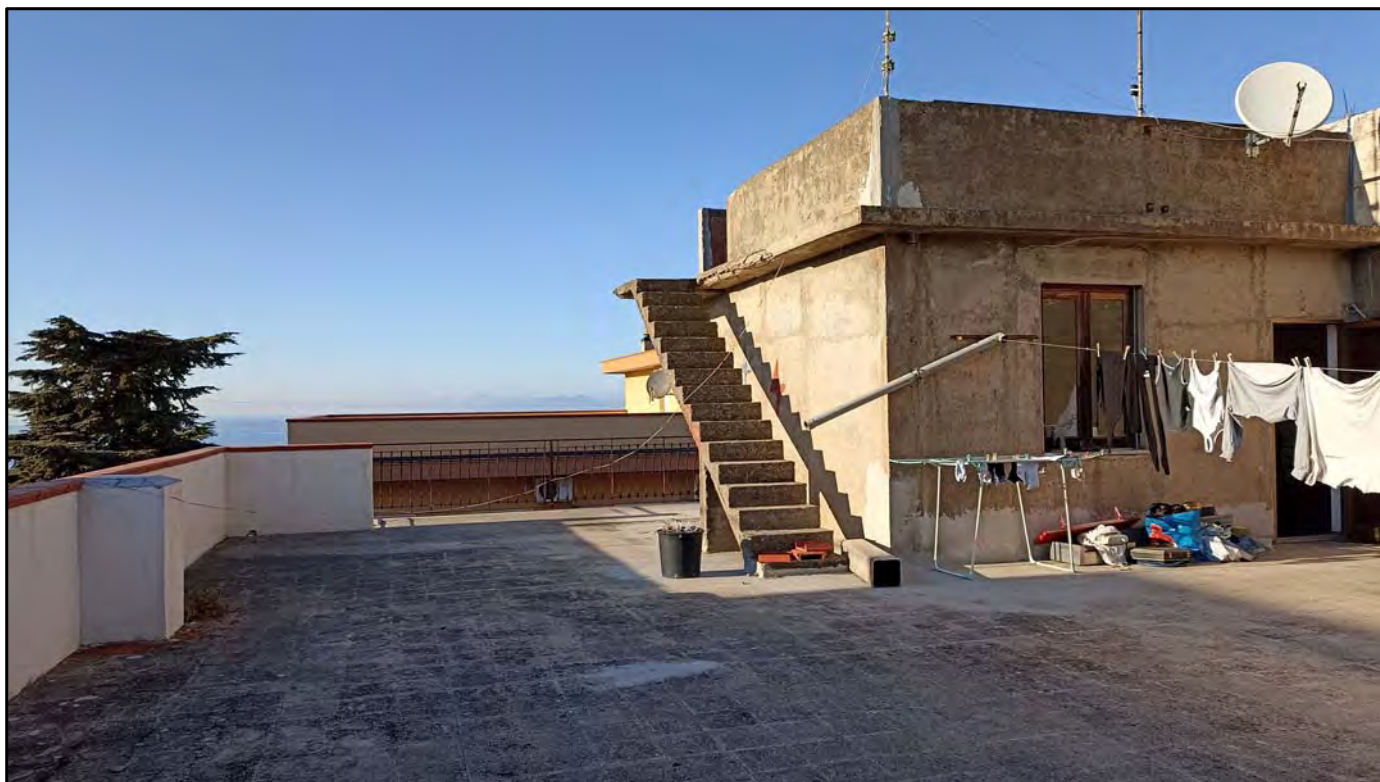


Balcone sul prospetto laterale

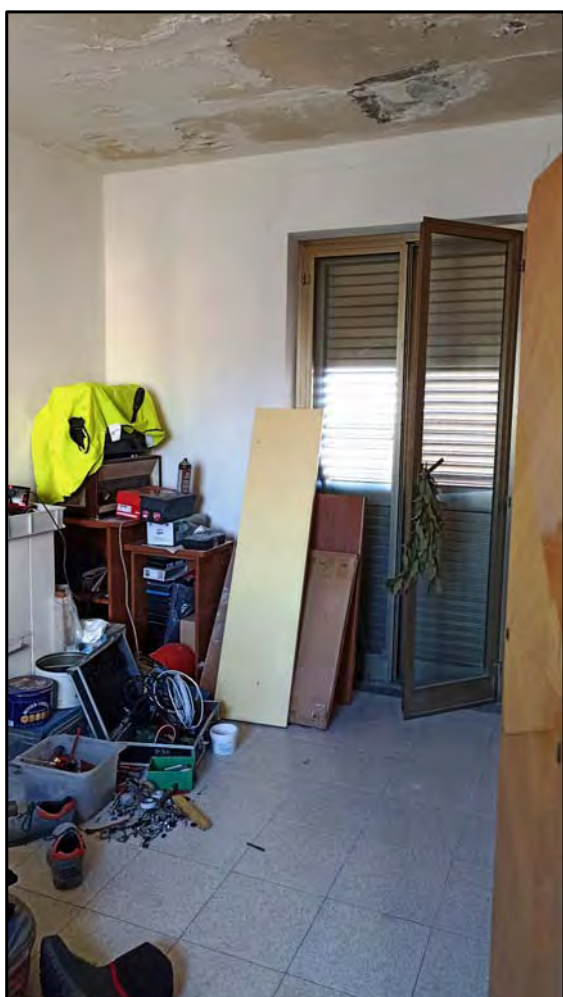


Balcone sul retro

LOTTO N. 2
Unità immobiliare f. 9 part. 837 sub. 5



Terrazza e locale deposito



Interno locale deposito