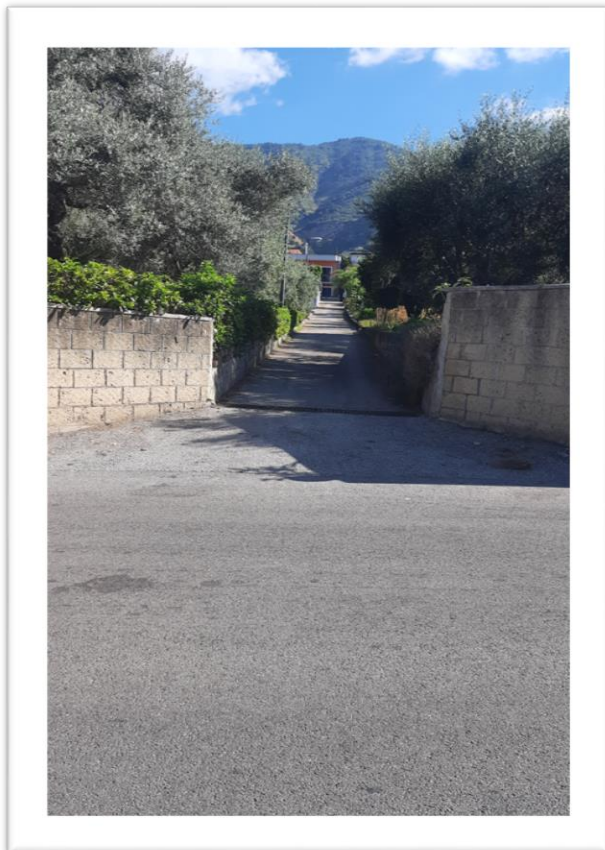
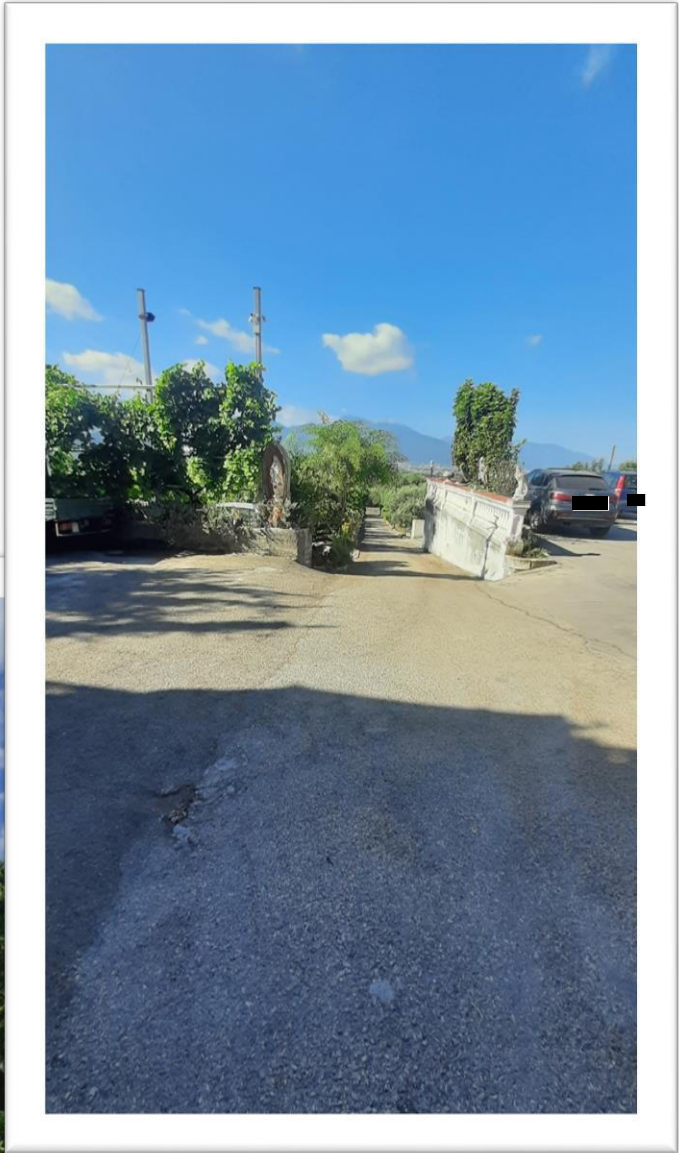
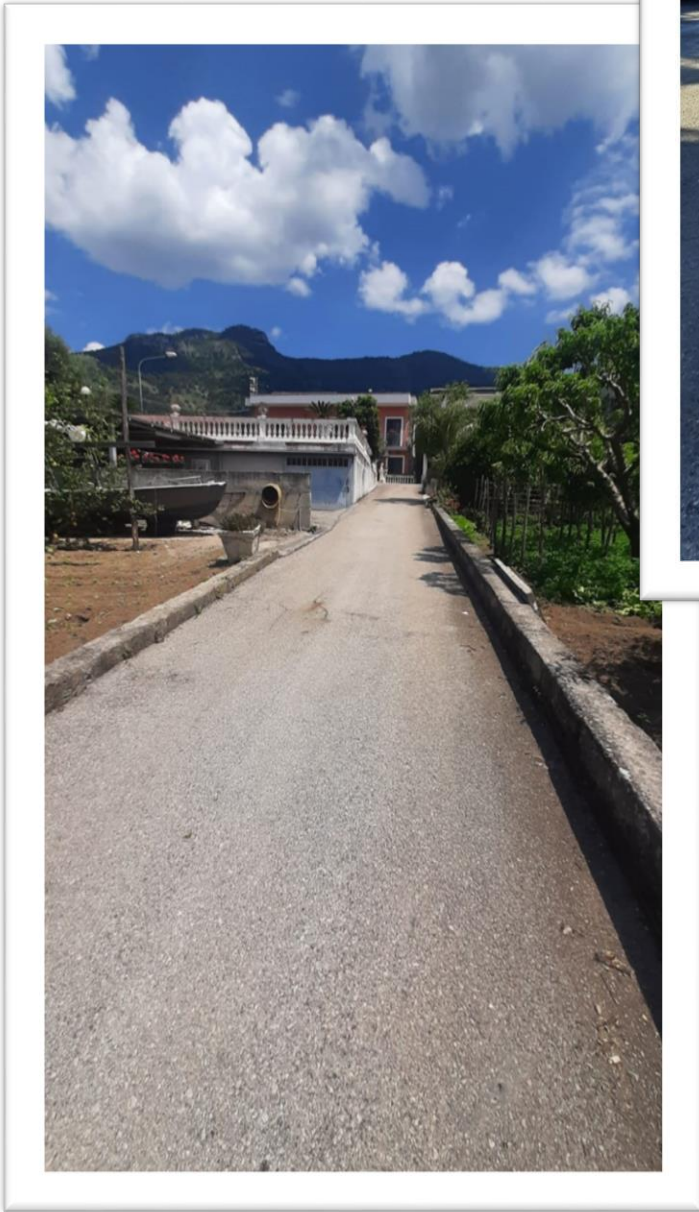


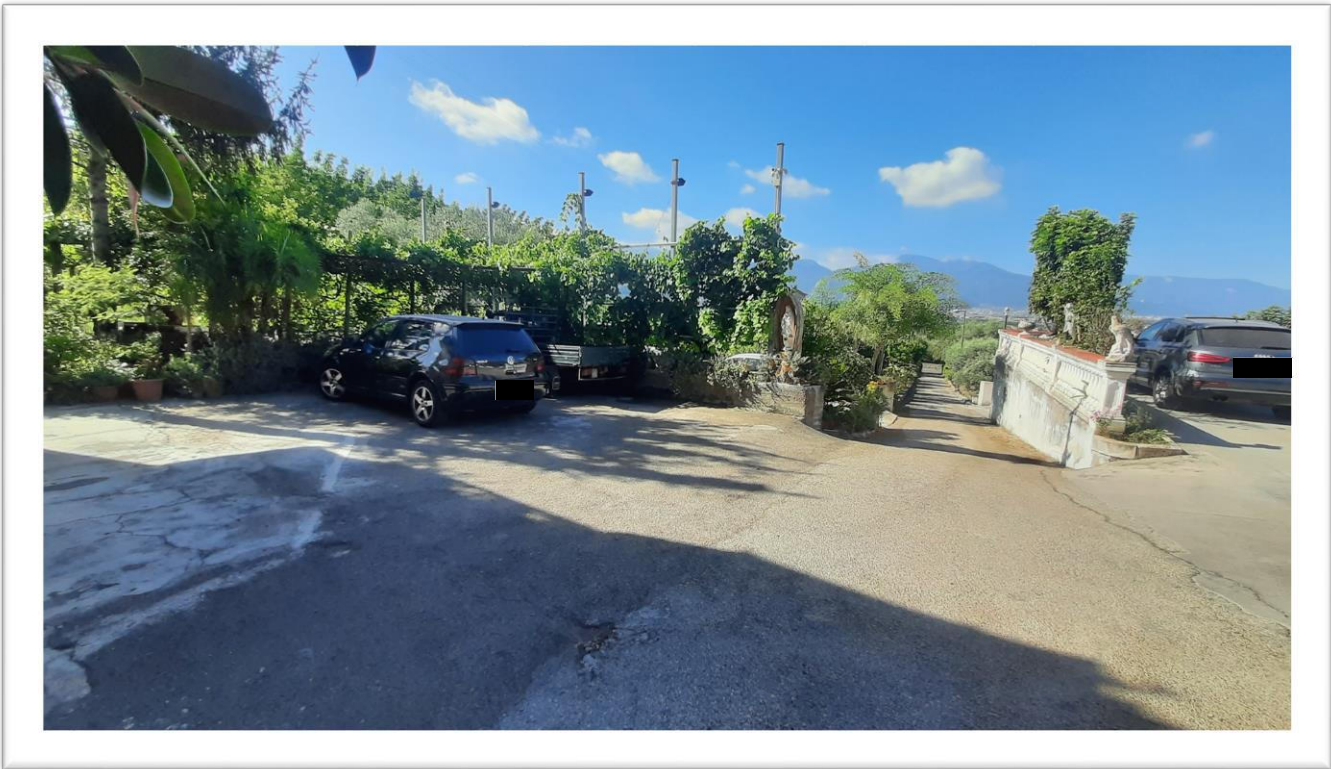
**ACCESSO AI BENI**



**Foto 1 e 1a**



**Foto 2 e 3: Cortile di ingresso**

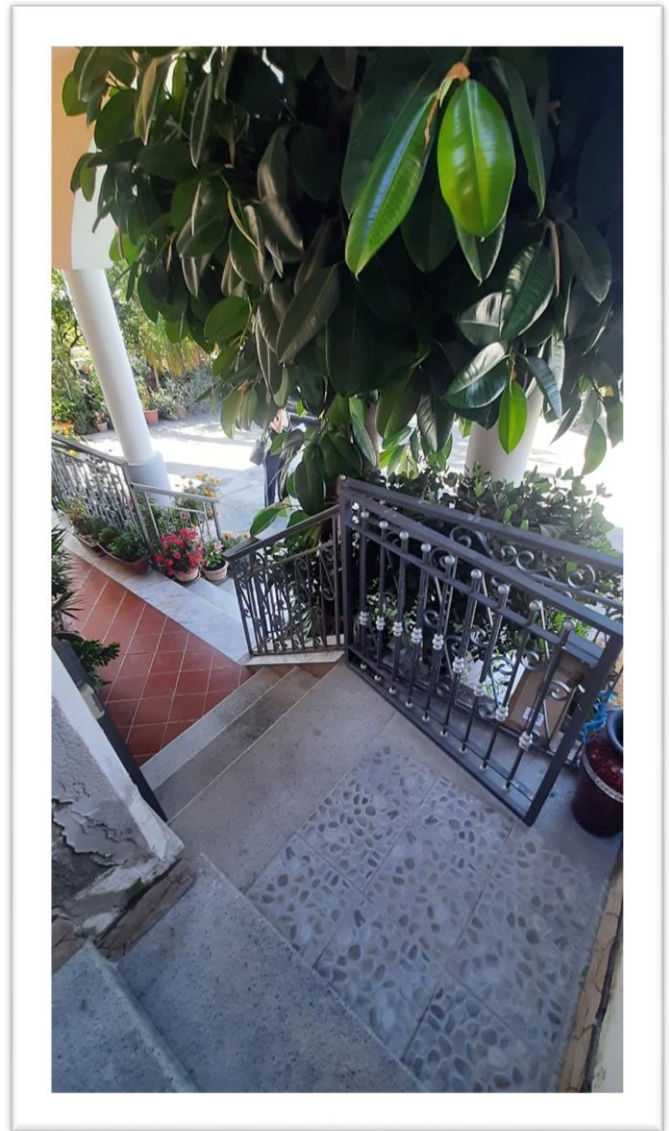
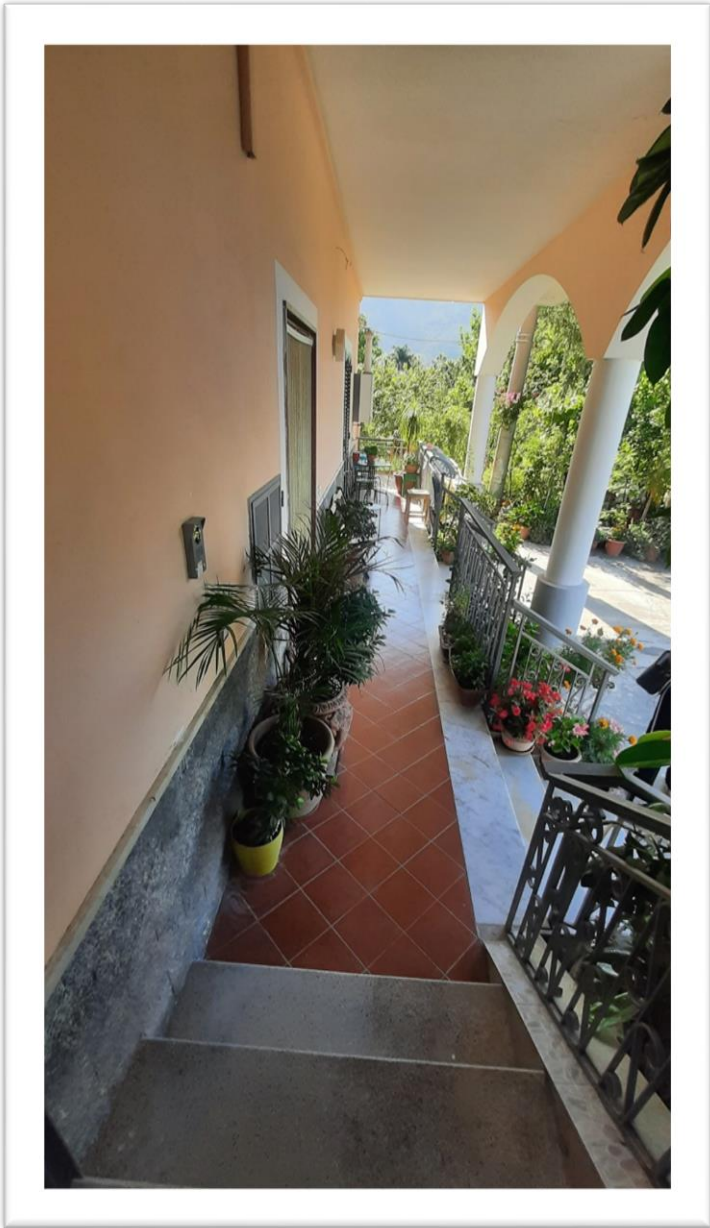


**Foto 4: corte antistante l'abitazione**

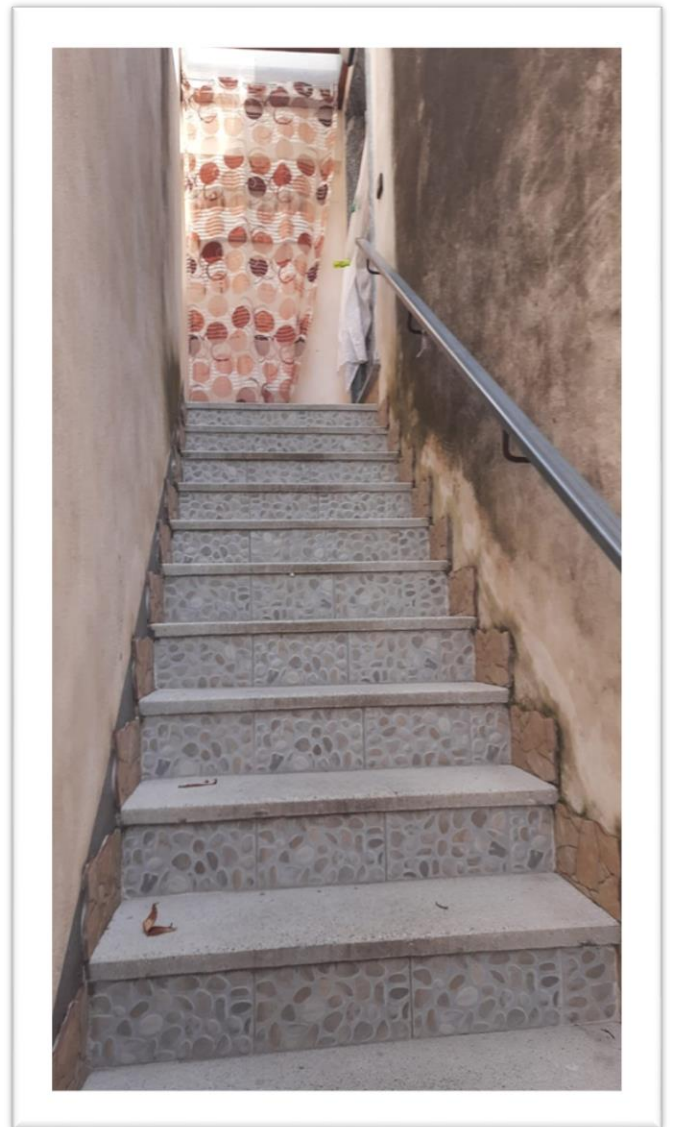
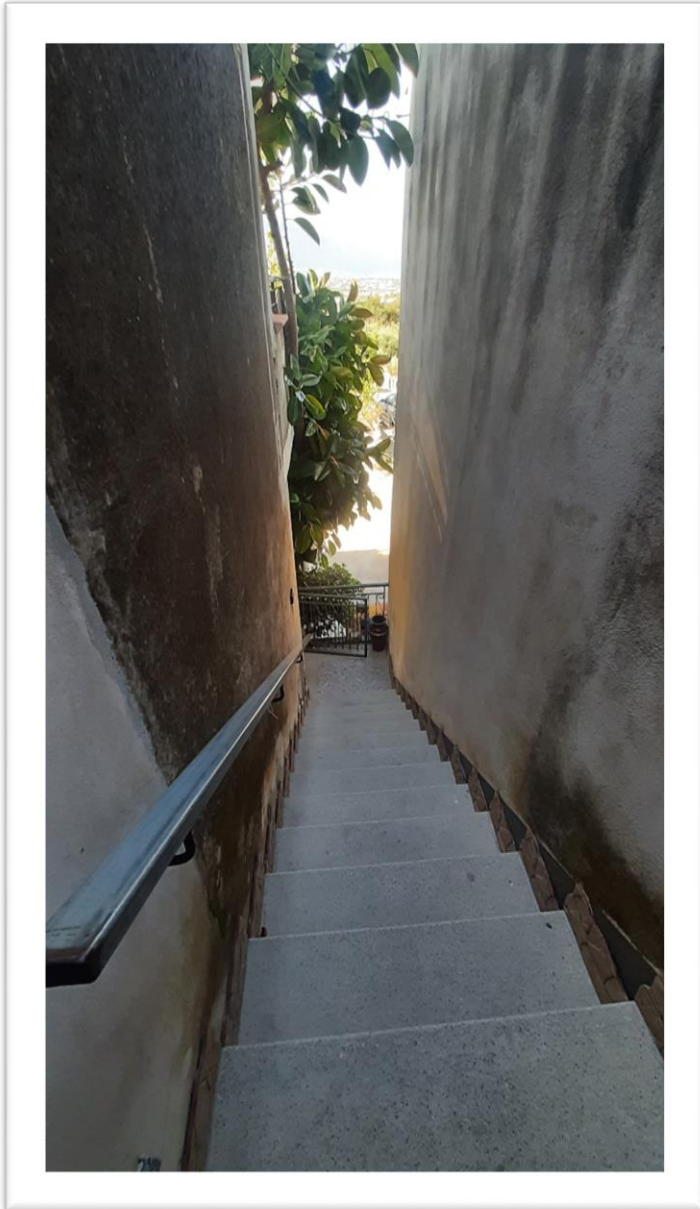


**Foto 5: Fabbricato ospitante l'u.i. pignorata**

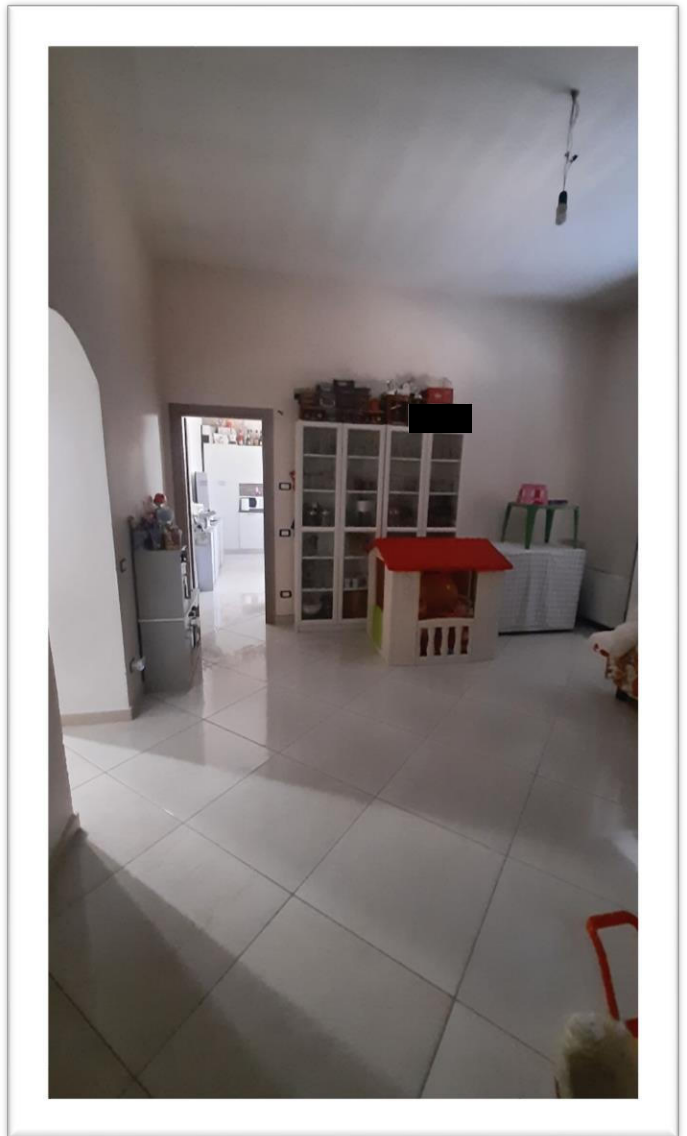
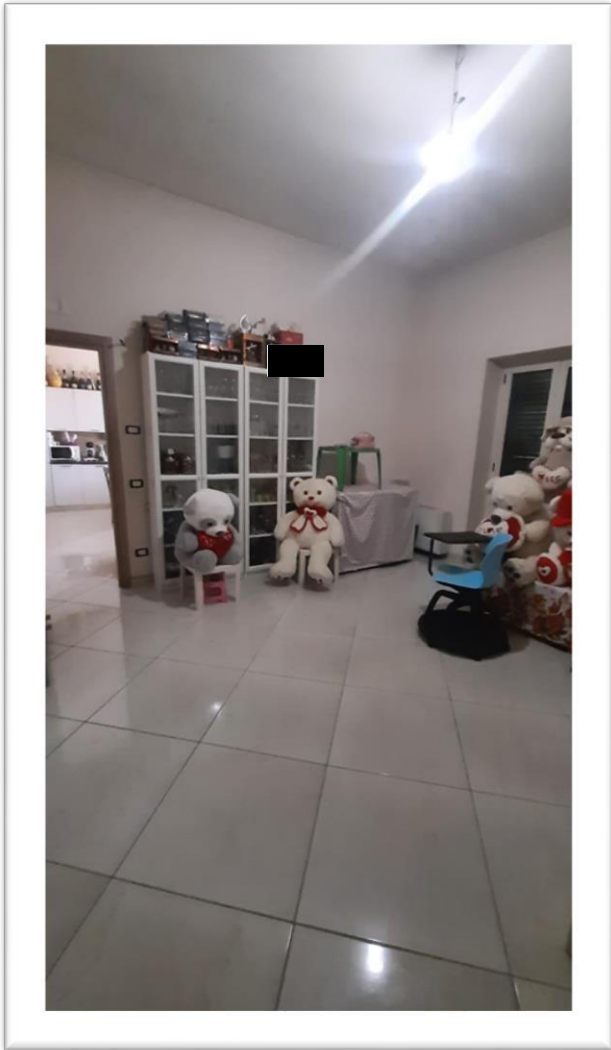
**ACCESSO ALL'APPARTAMENTO: FOGLIO 24, P.LLA 939, SUB 6**



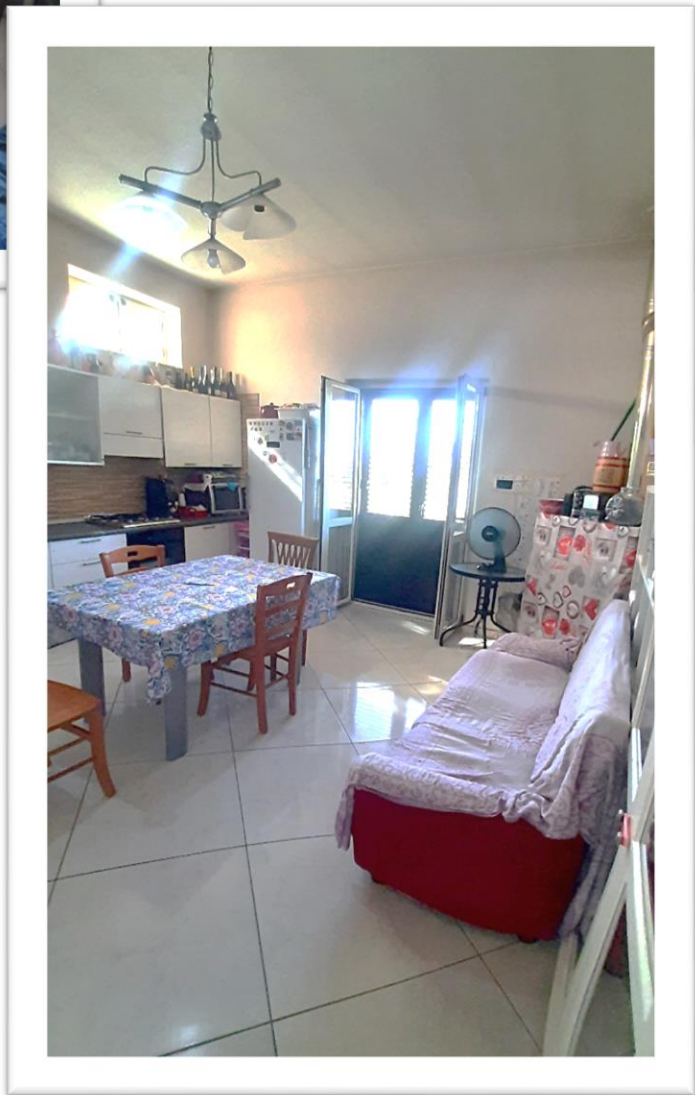
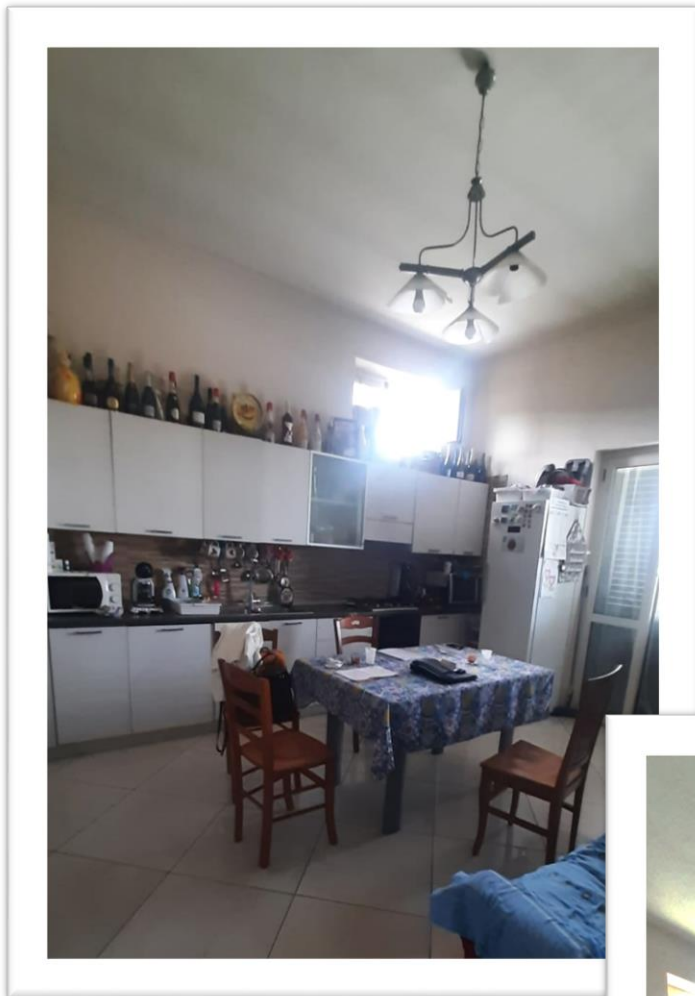
**Foto 6 e 7: accesso all'u.i. pignorata**



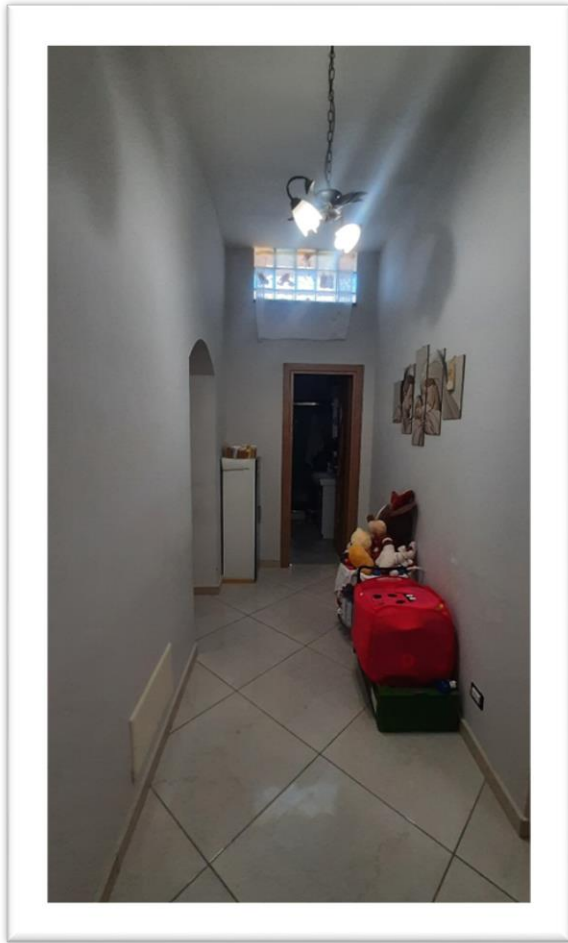
**Foto 8-9: Scala posta sul lato nord del fabbricato**



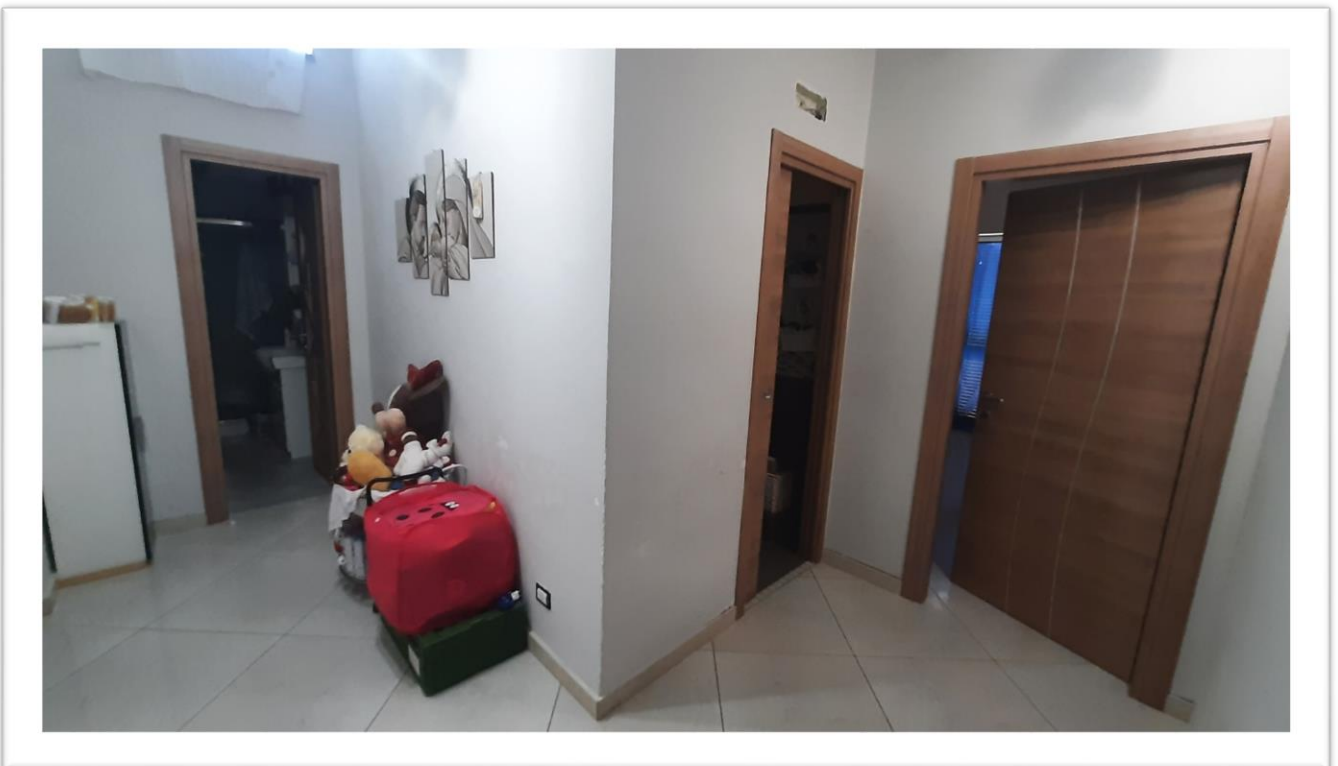
**Foto 10-11: Soggiorno**



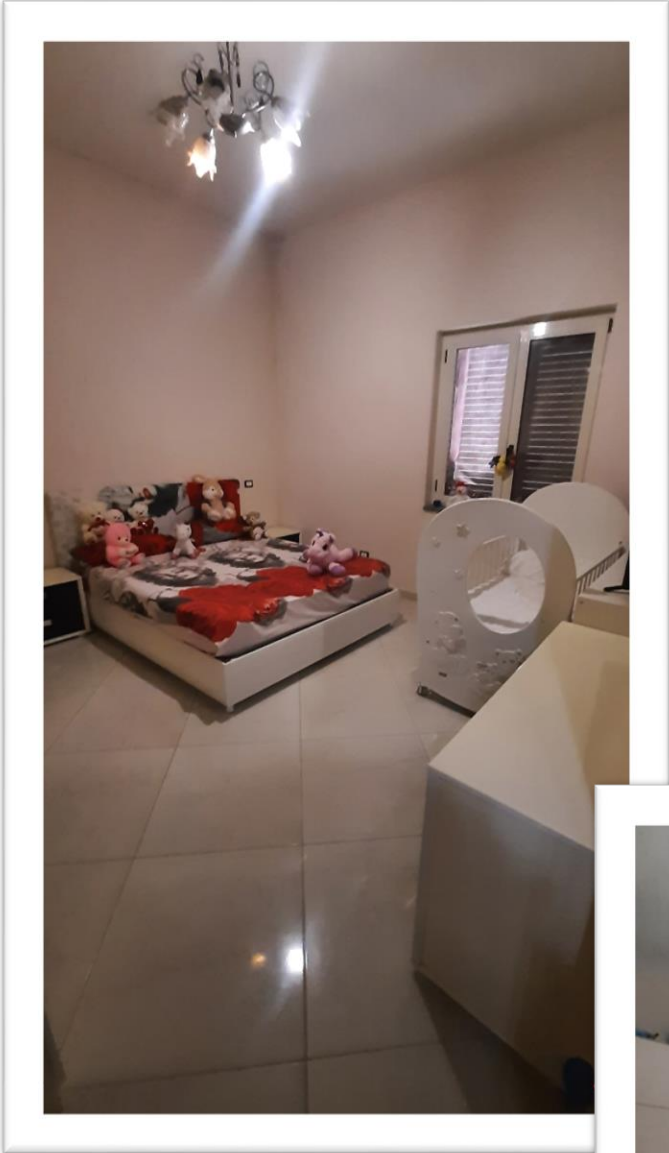
**Foto 12-13: Cucina**



11 •



**Foto 15-16: Disimpegni**

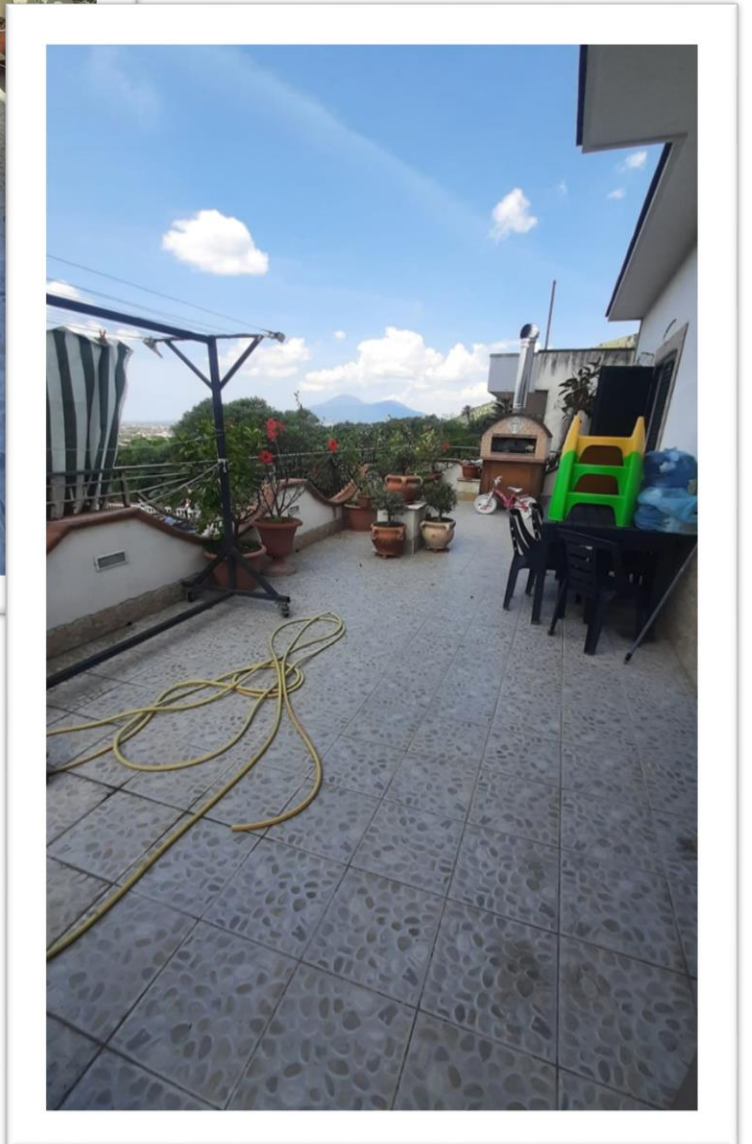
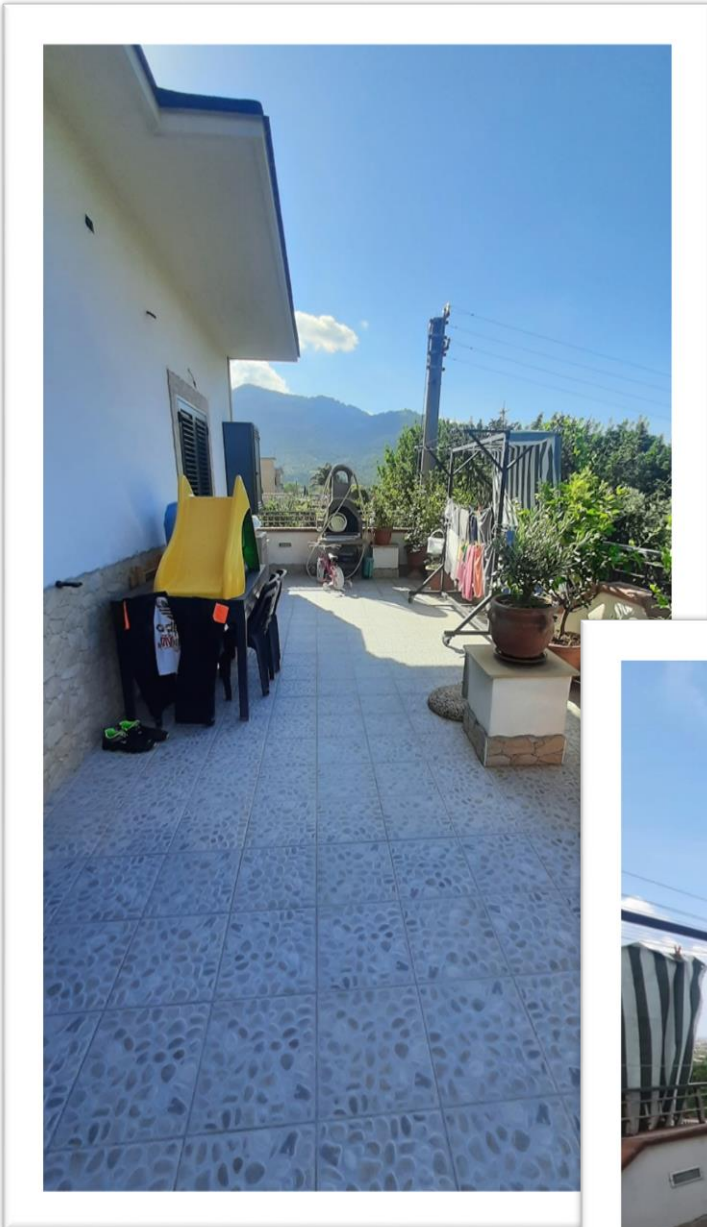


**Foto 17-18: camere**



**Foto 19-20: camera+bagni**

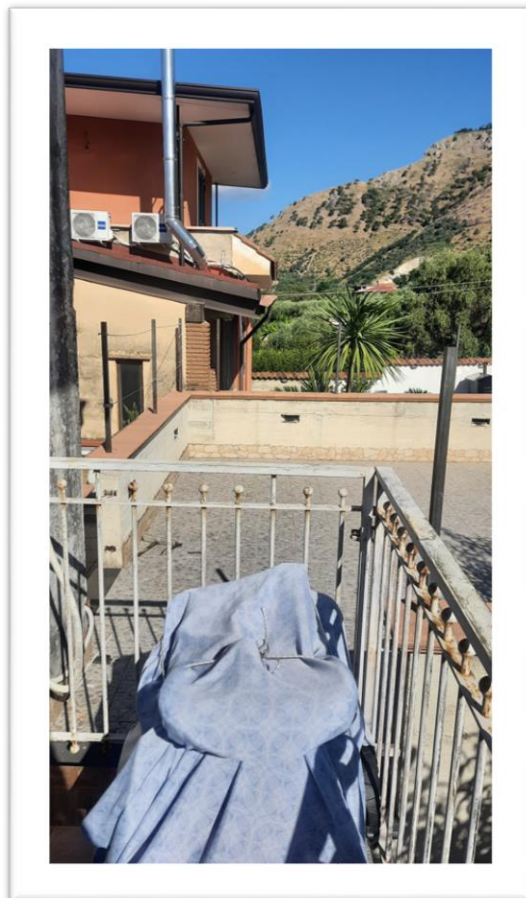
**ESTERNO**



**Foto 21-22: balcone lato sud**



**Foto 23: prospicienza corte**

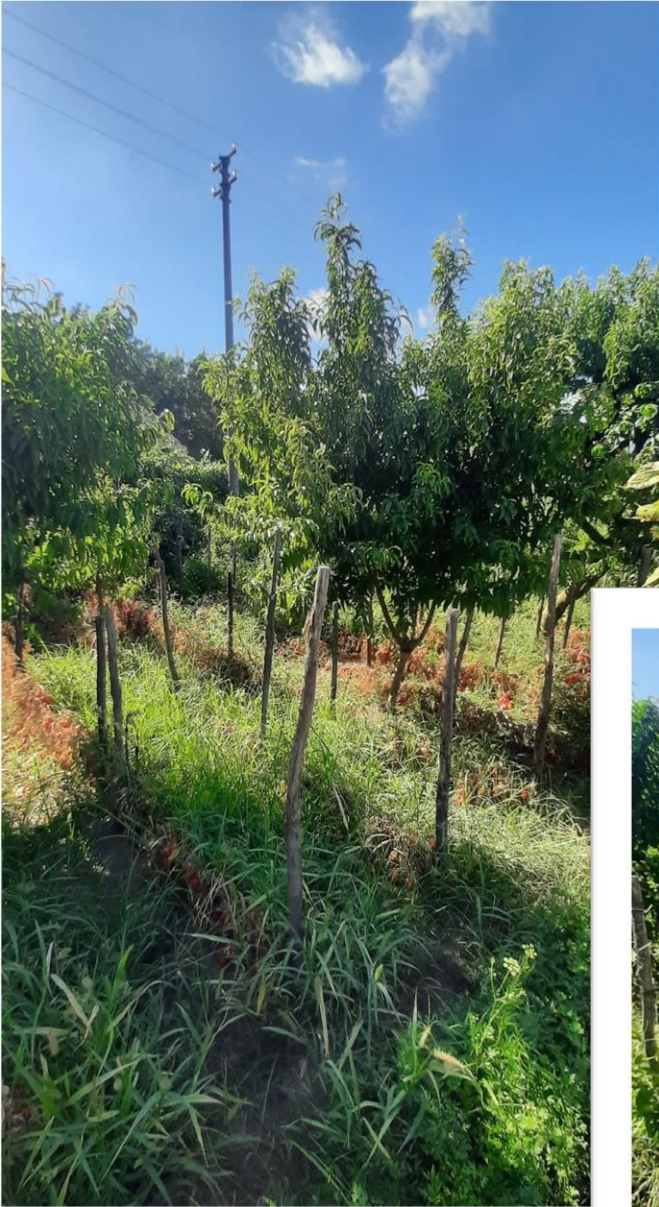


**Foto 24: Bagno lato est**

**FONDO AGRICOLO: FOGLIO 24 – P.LLE 1514 E 1515**



**Foto 25-26: TERRENO**



**Foto 27-28: TERRENO**