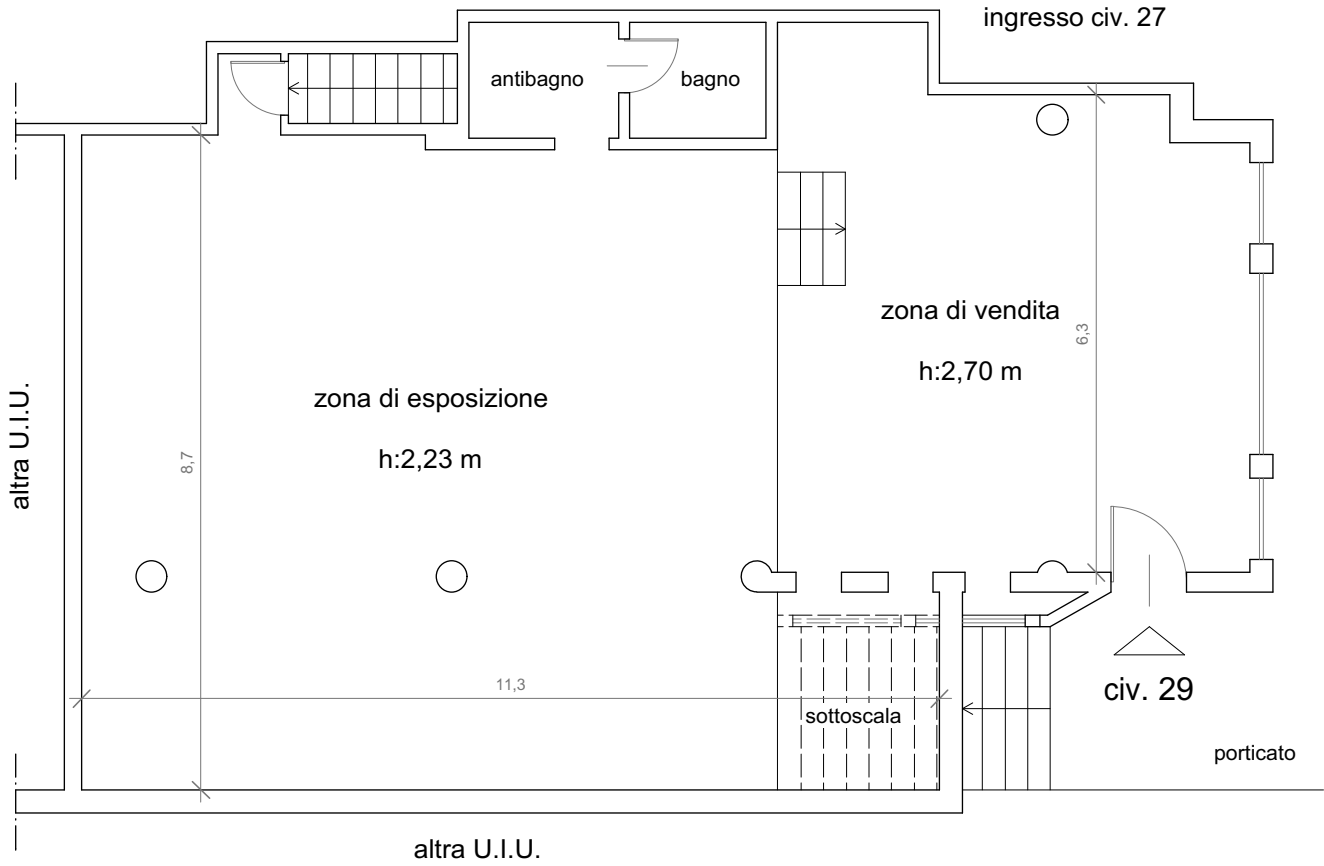


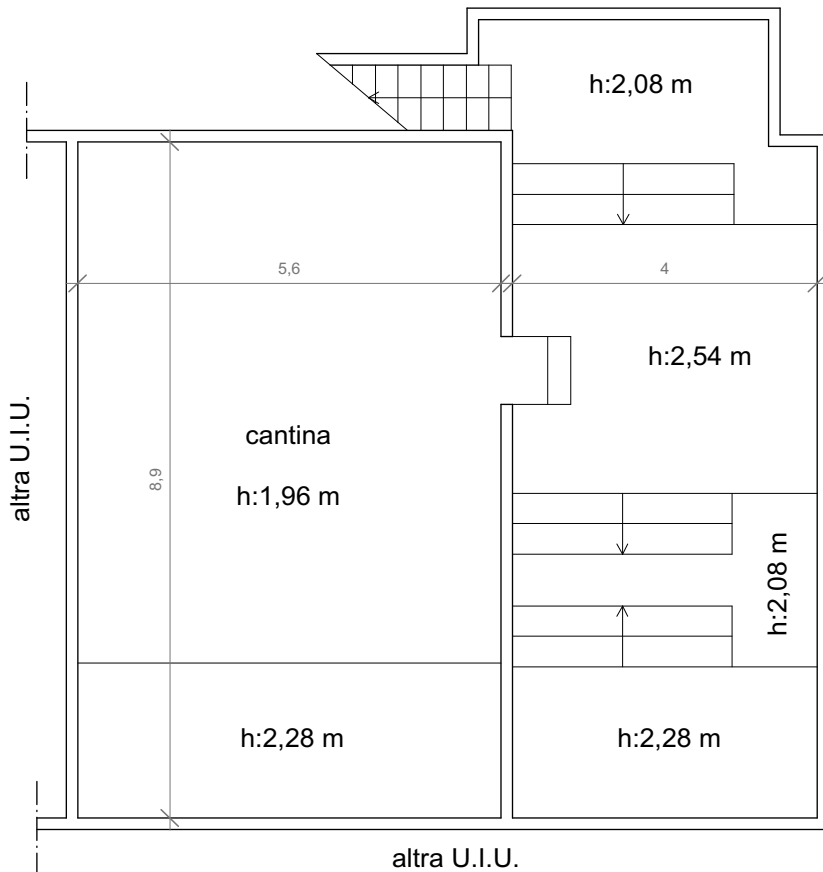
Allegato 1

negozio viale E. Razzetti 29/E, Santo Stefano d'Aveto (GE)

pianta piano terra e sottostrada - scala 1:100



pianta piano fondi - scala 1:100



altra U.I.U.

	mq
zona vendita	40,70
zona esposizione	84,30
bagno e antibagno	5,95
cantina	93,60
sup. lorda piano terra	46,10
sup. lorda piano S1	101,80
sup. lorda piano fondi	99,30

