

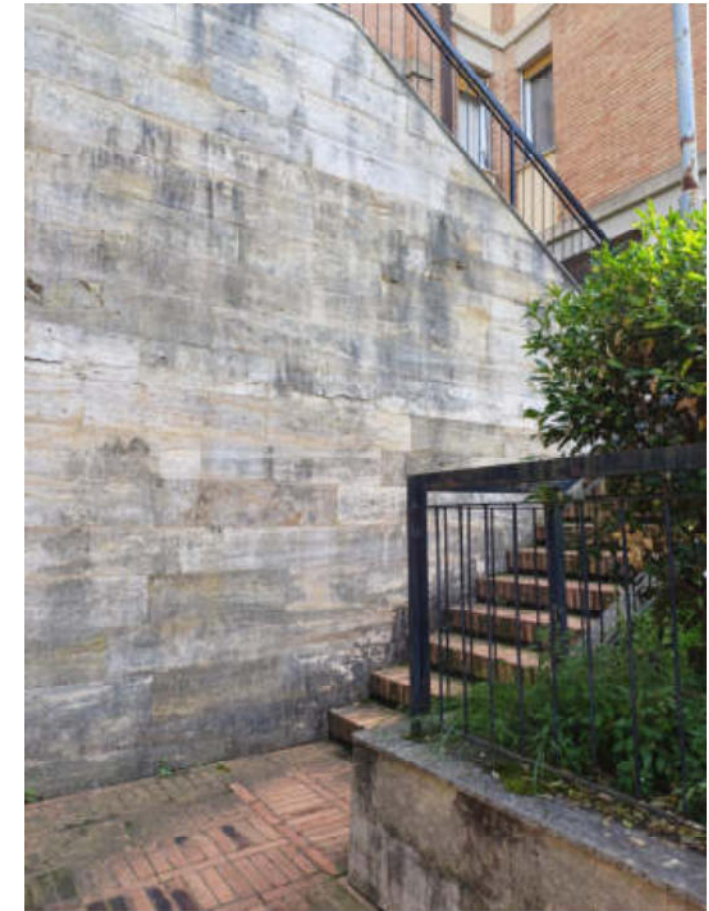
1 - Edificio lato Via G. Puccini



2 - Ingresso da Via G. Puccini



3 - Scala di accesso



4 - Scala di accesso



5 - Scala di accesso



6 - Porticato



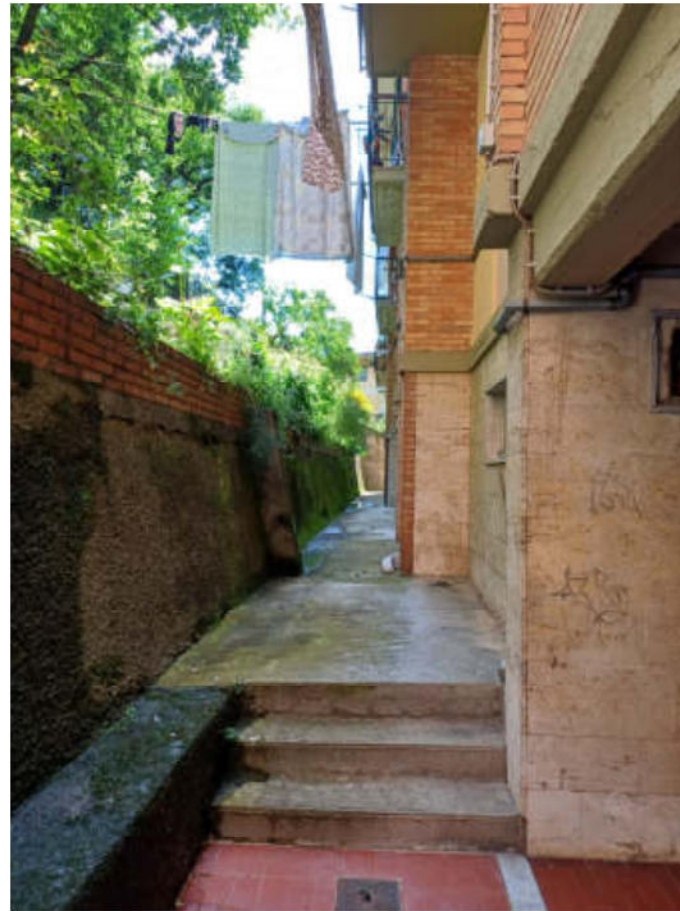
7 - Porticato



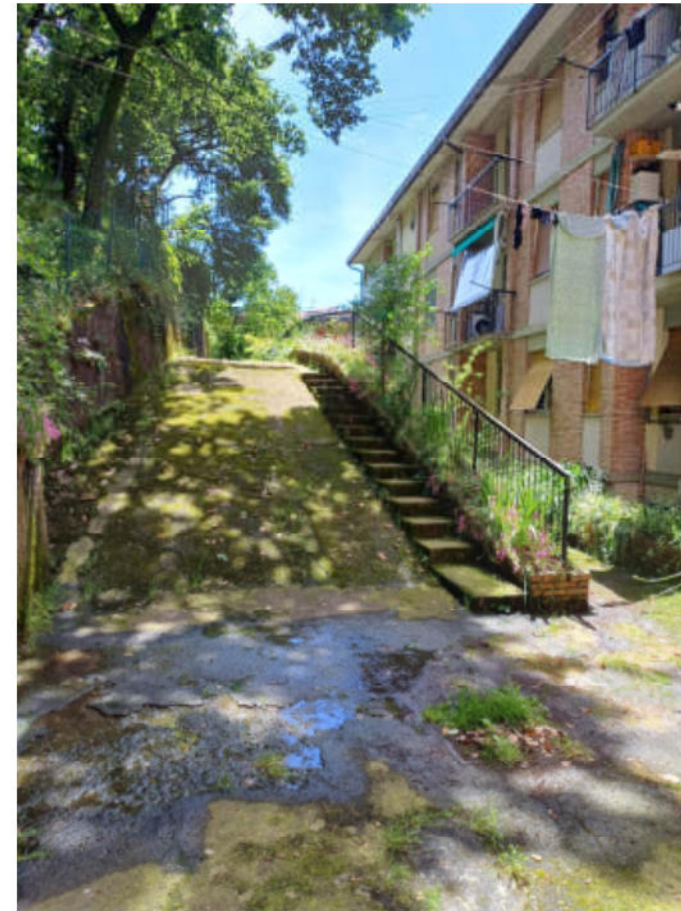
8 - Porticato



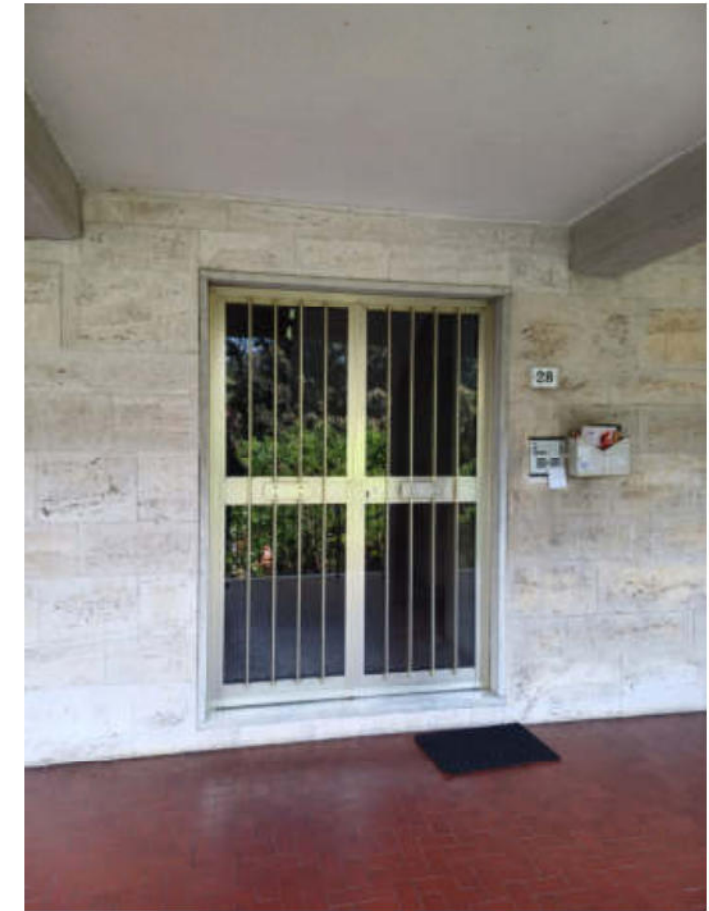
9 - Accesso area retro edificio



10 - Retro edificio



11 - Retro edificio



12 - Ingresso civico n. 28



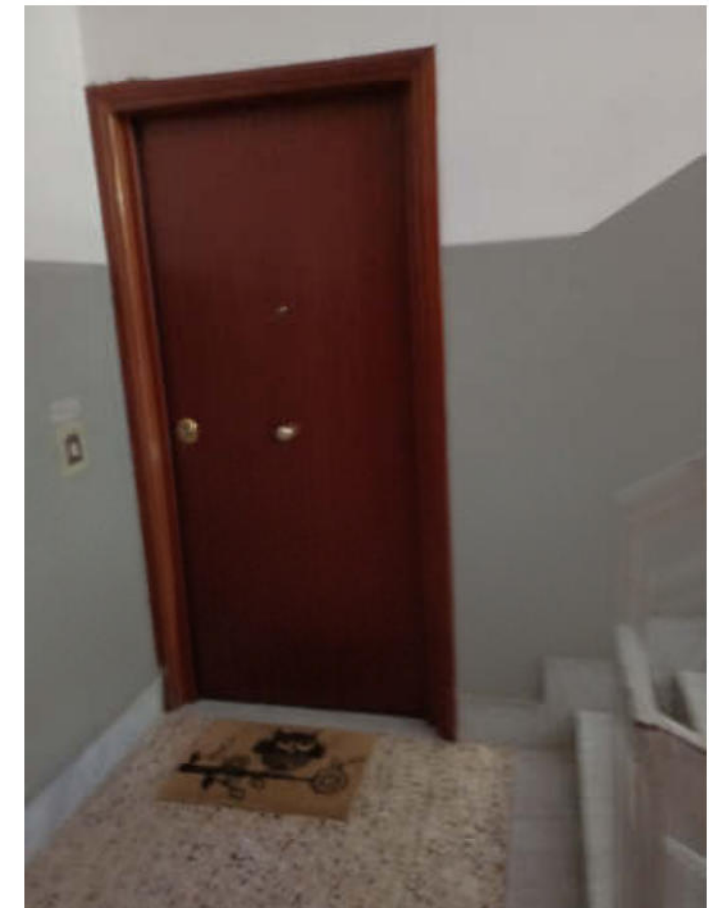
13 - Atrio_vano scale



14 - Accesso corridoio comune



15 - Cantina



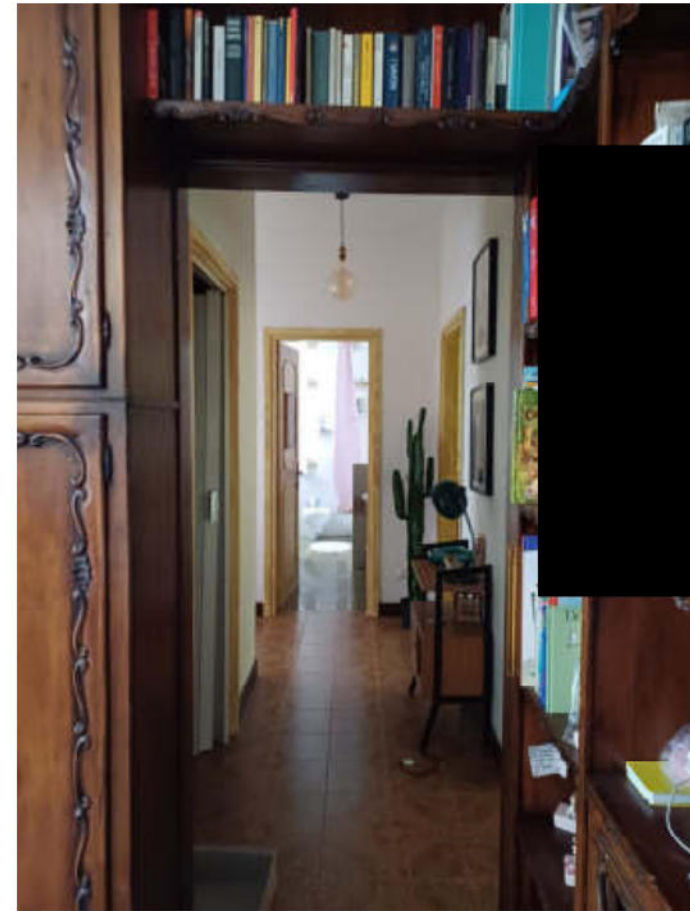
16 - Ingresso appartamento



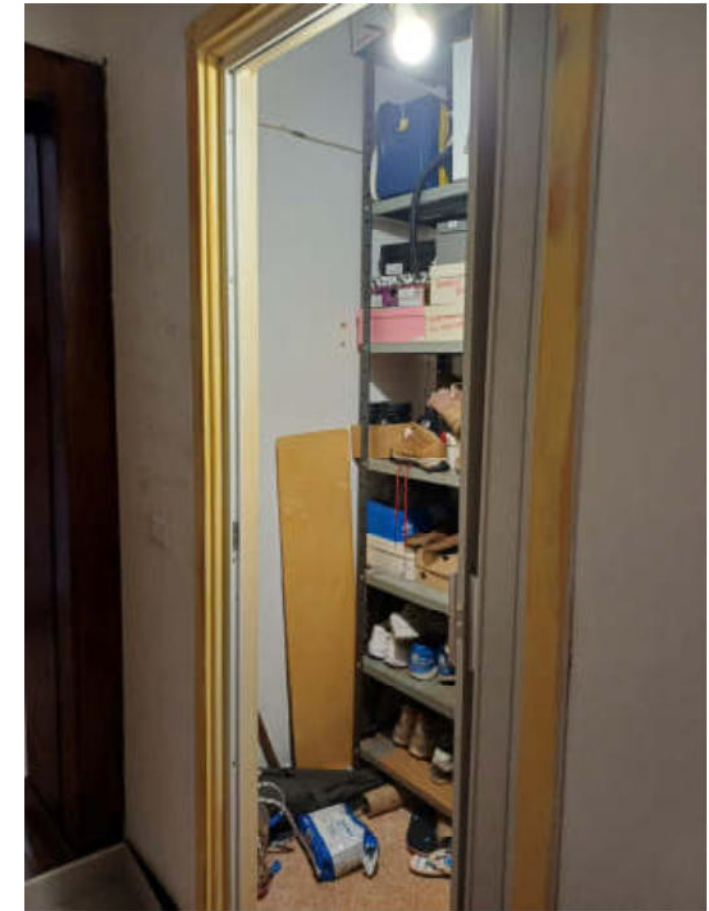
17 - Soggiorno



18 - Cucina



19 - Corridoio



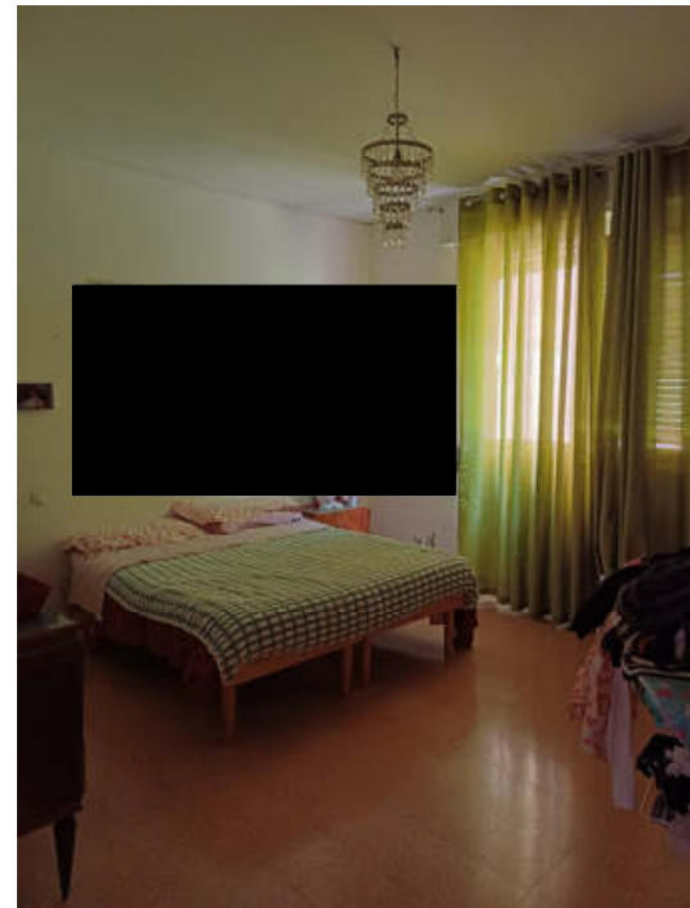
20 - Ripostiglio



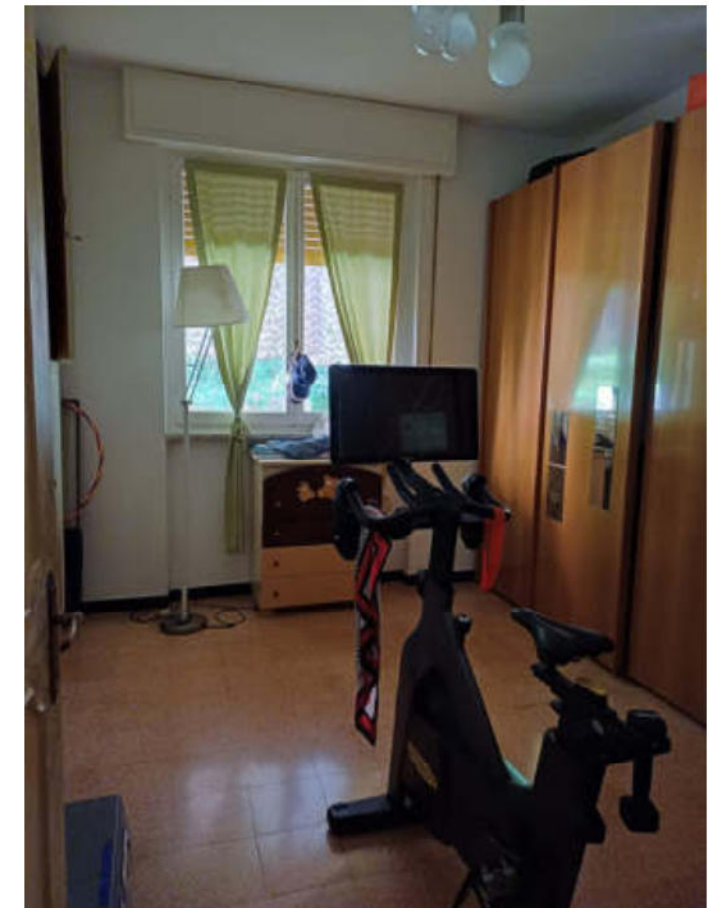
21 - Particolare porte interne



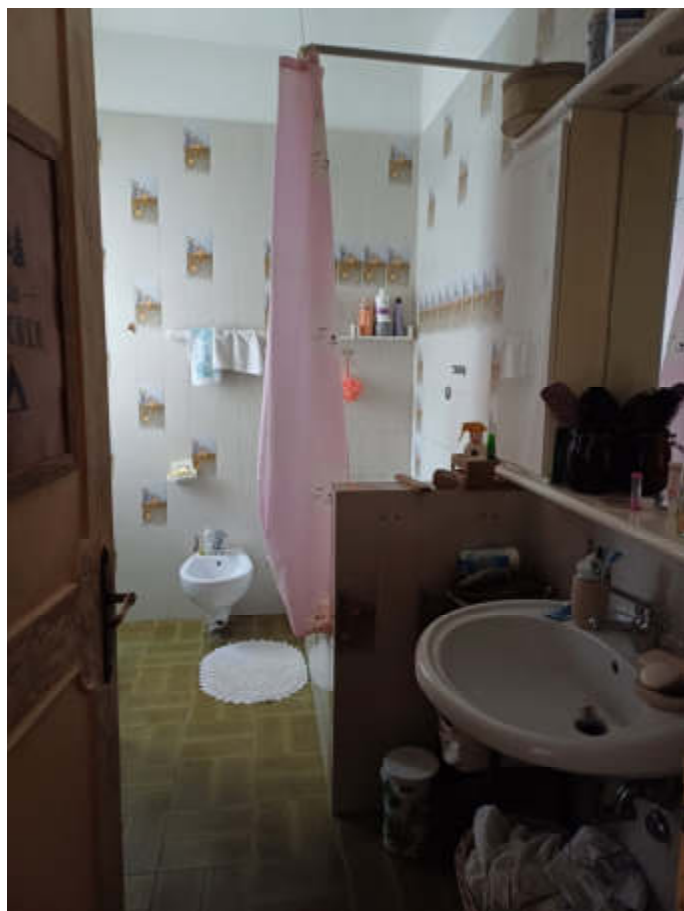
22 - Camera



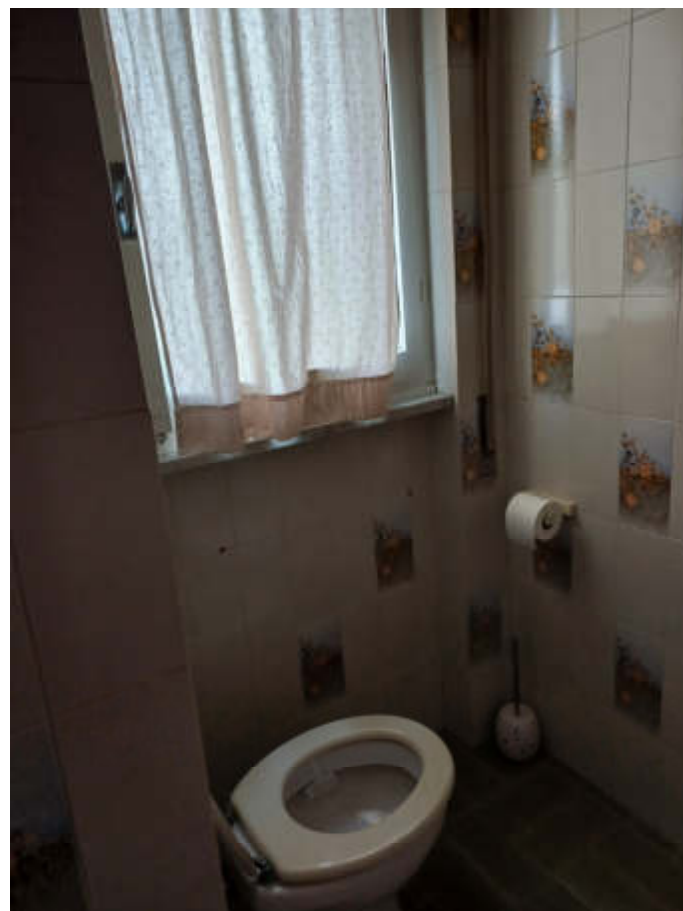
23 - Camera



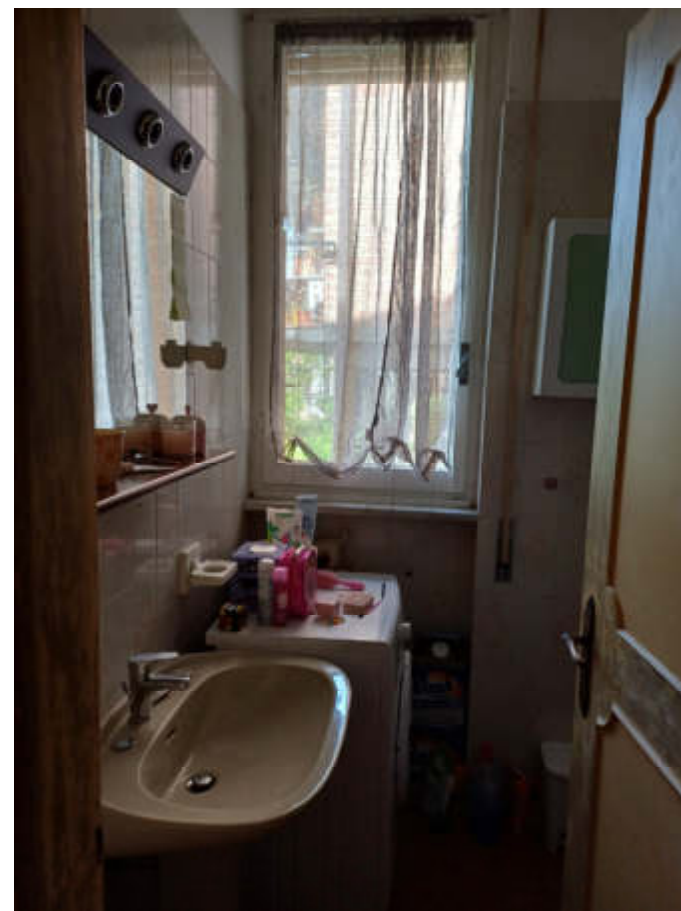
24 - Camera



25 - Bagno principale



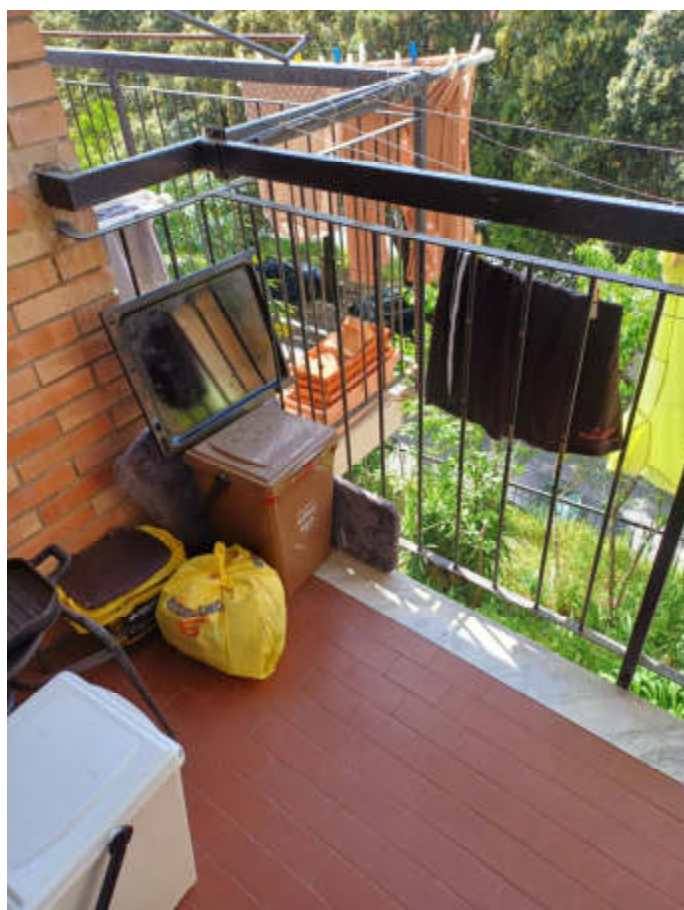
26 - Bagno principale



27 - Bagno secondario



28 - Bagno secondario



29 - Balcone cucina



30 - Balcone soggiorno



31 - Veduta da balconi



32 - Veduta da balconi