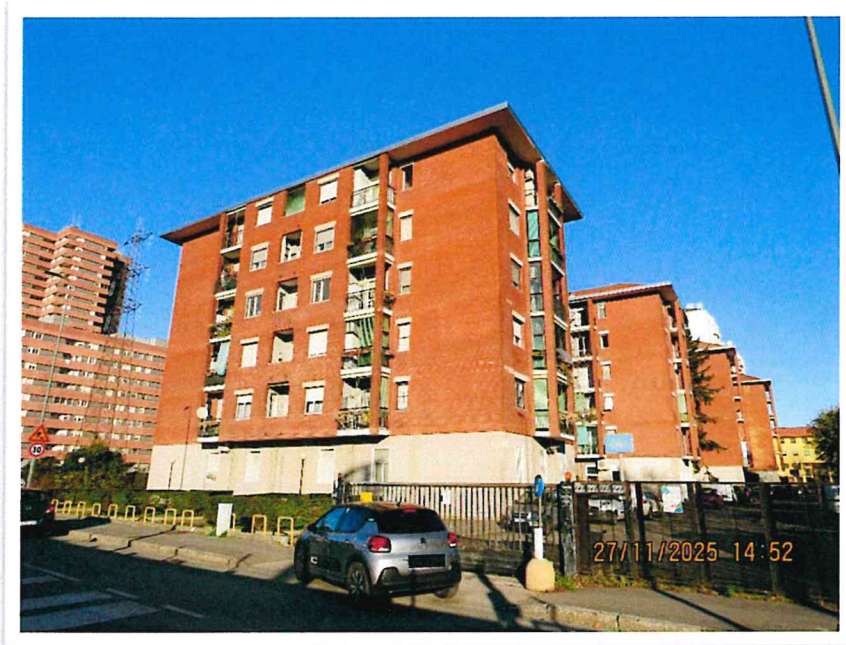


DOCUMENTAZIONE FOTOGRAFICA

Via TRASIMENO, 22/5

MILANO



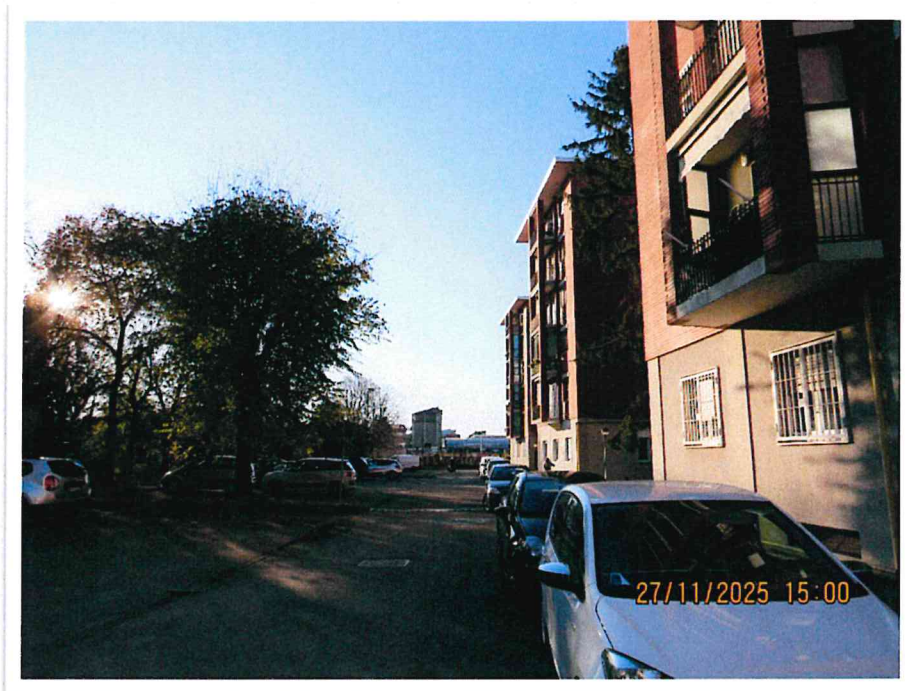
Vista dei palazzi condominiali da via Trasimeno e particolare dell'ingresso.





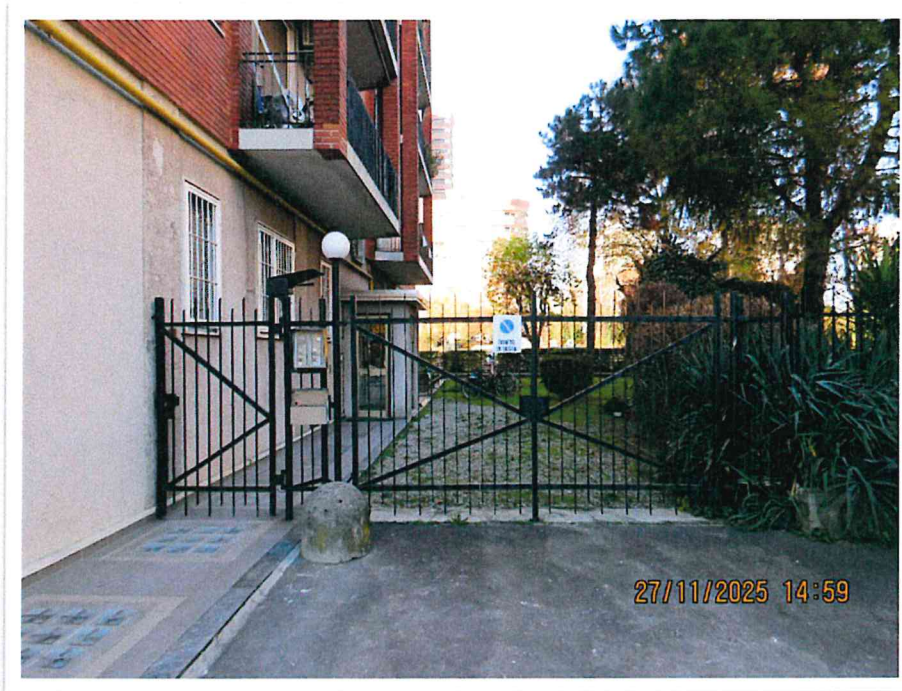
L'intorno.





Percorsi esterni comuni e, sotto, la palazzina n. 22/5.





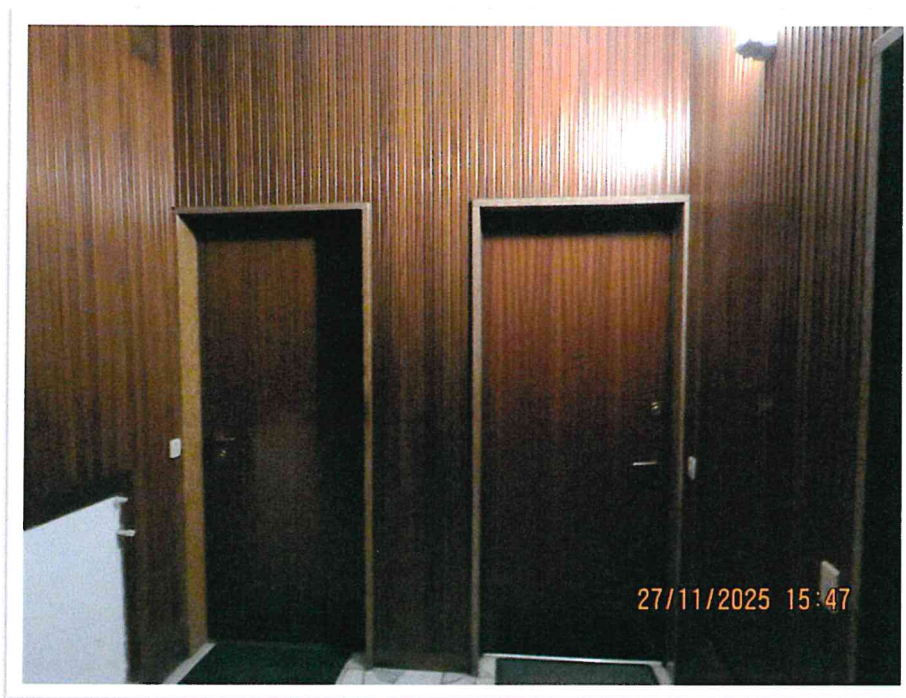
Particolare dell'ingresso alla palazzina 22/5 di via Trasimeno.



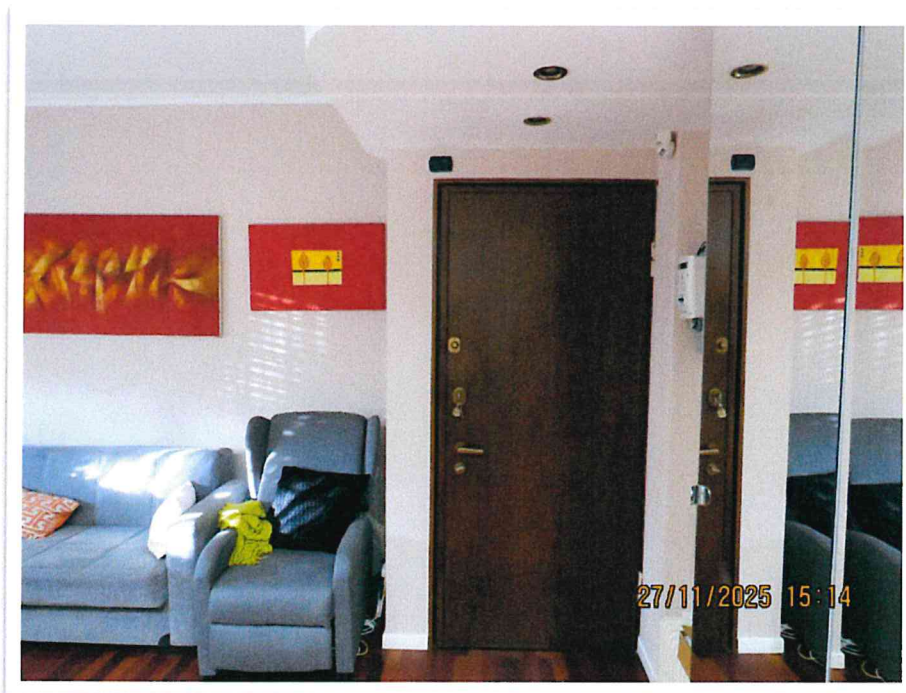


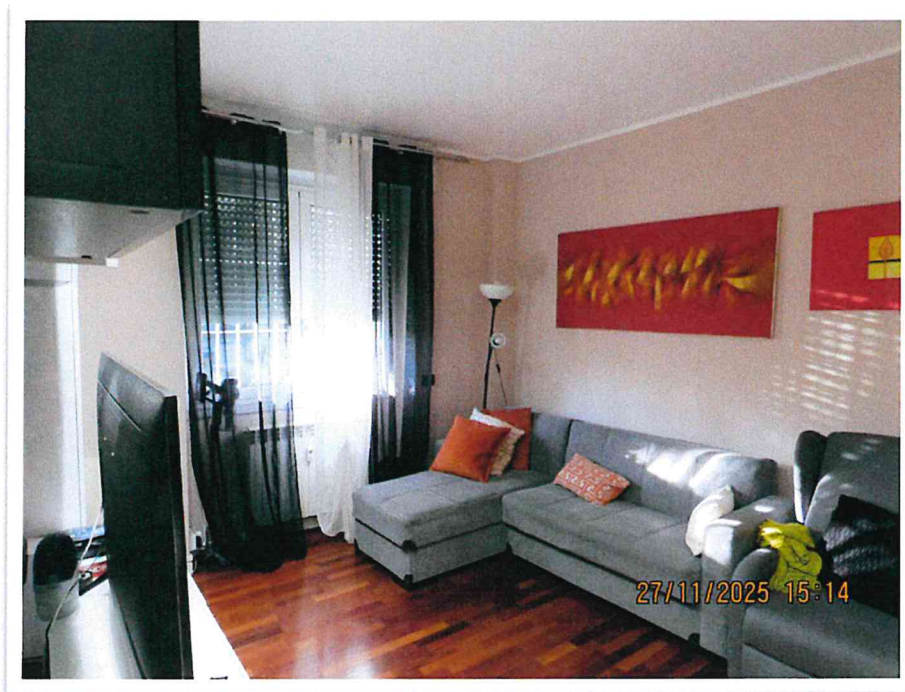
Particolare dell'ingresso condominiale.



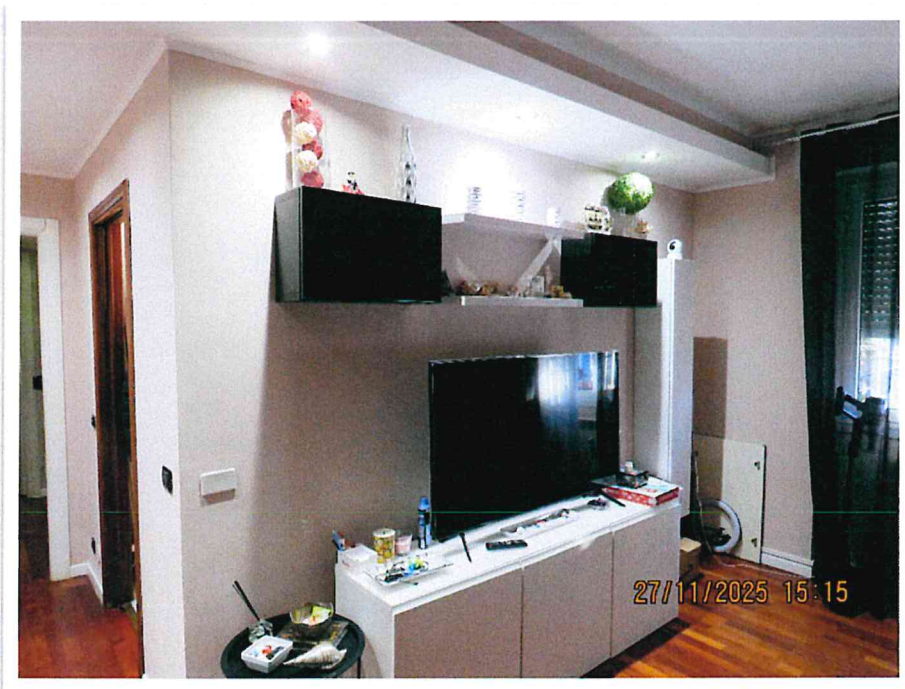


Particolare della zona d'ingresso (in alto porta a destra).



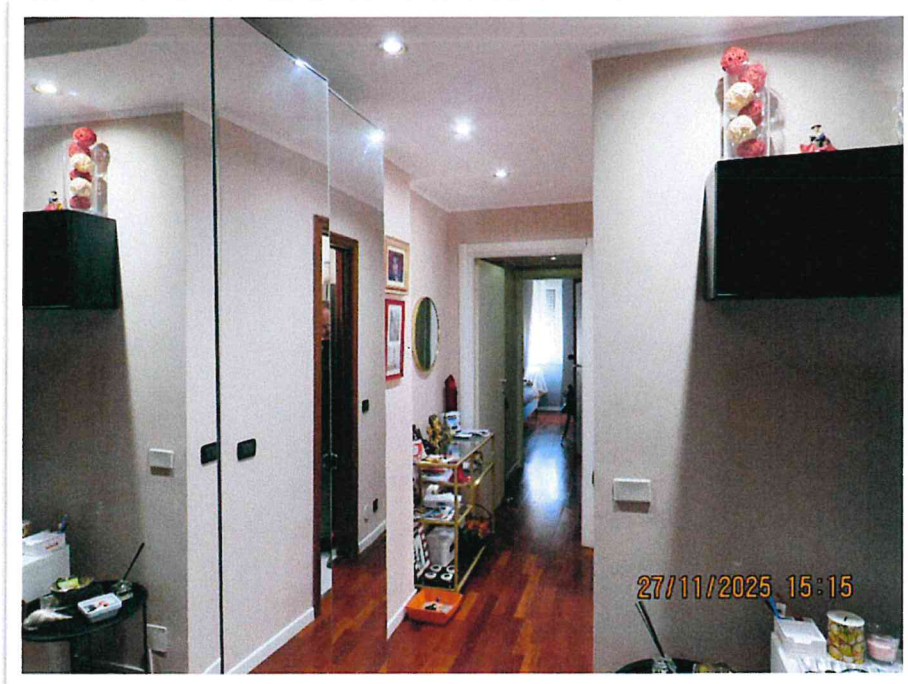


Il soggiorno.





Altre viste del soggiorno.



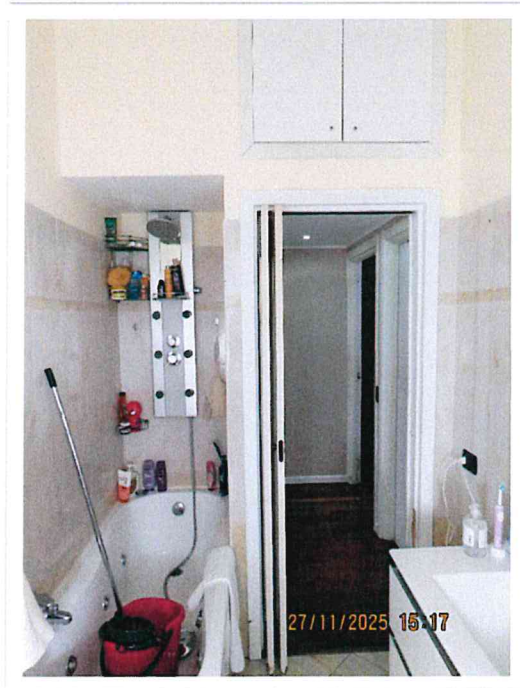


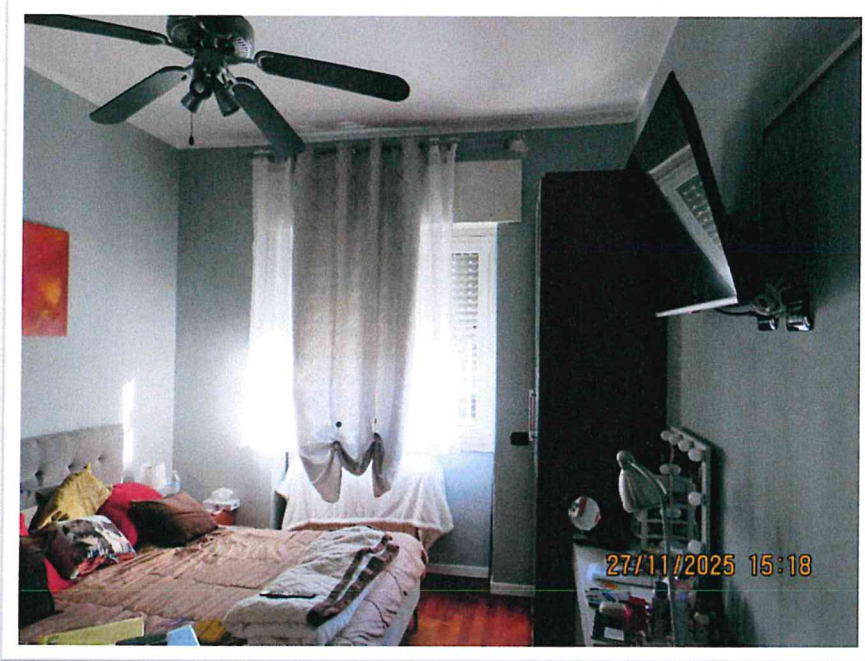
La cucina.





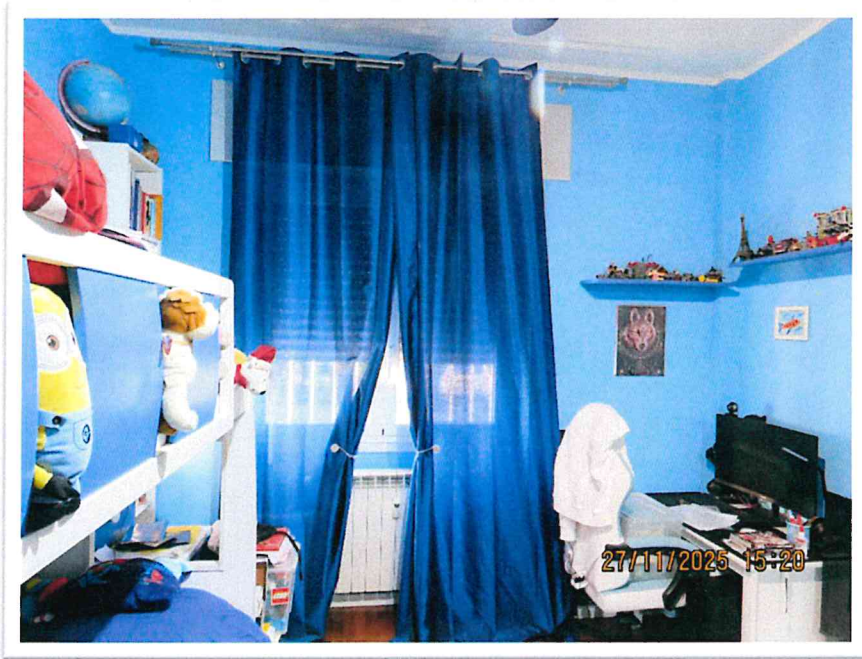
Il bagno.





Una delle camere.





Altra camera.





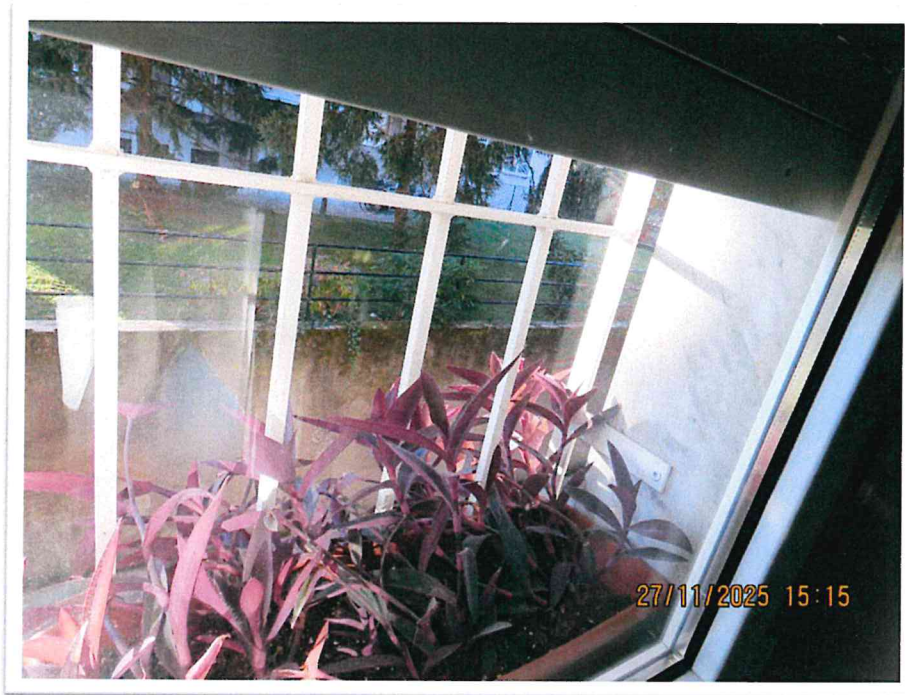
Particolari.



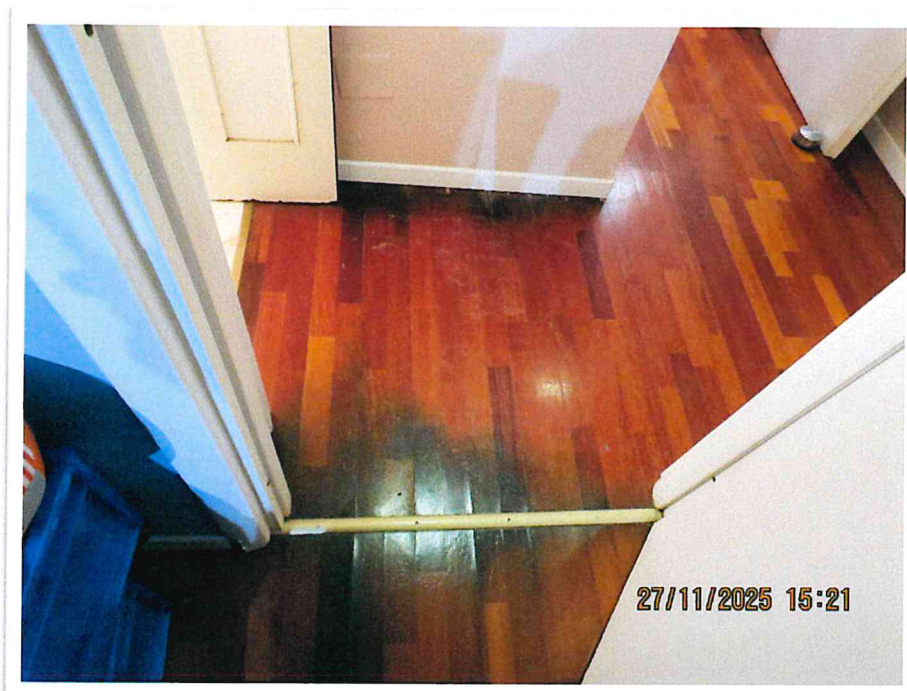


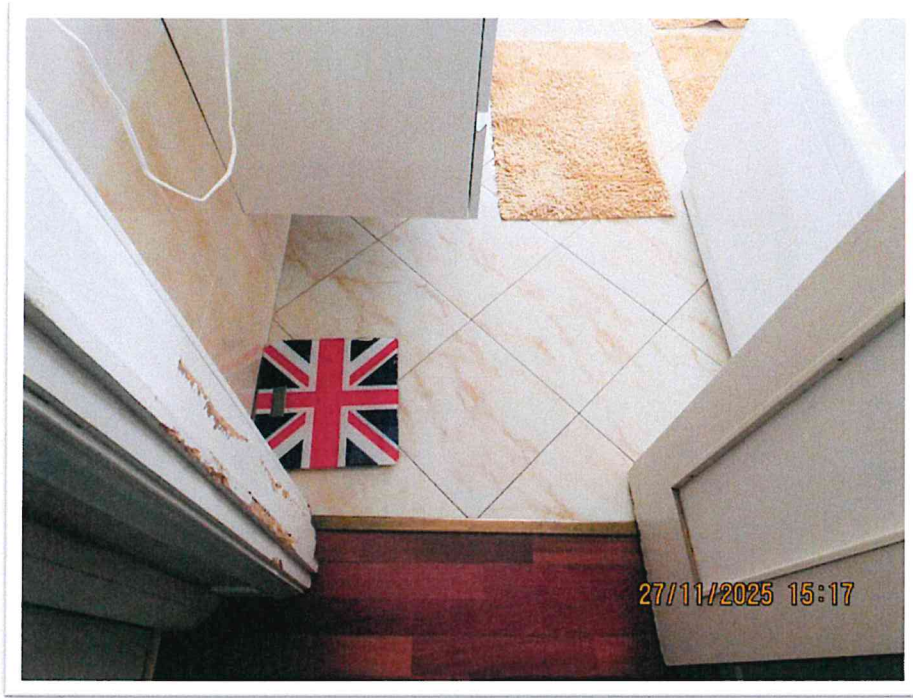
Particolari.





Particolari.





Particolari e, sotto, la scala per l'accesso alle cantine.





La cantina.

