

**TRIBUNALE DI TREVISO**  
**SEZIONE DELLE ESECUZIONI IMMOBILIARI**  
**ESECUZIONE IMMOBILIARE N. R.G.E. 117/2023**

**Fascicolo fotografico**



1. aerofoto

2. vista da via Mons. Breda





3. e 4. fronte sud, edificio A





5. tettoia D.1

6. tettoia D.2





7. deposito C.

8. esterno a Nord





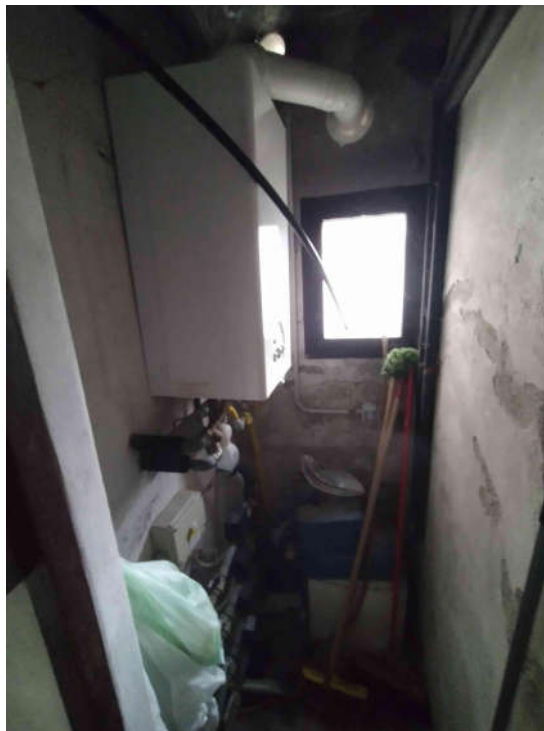
9. esterno a Nord , alimentazione caldaia.

10. fronte Nord-ovest



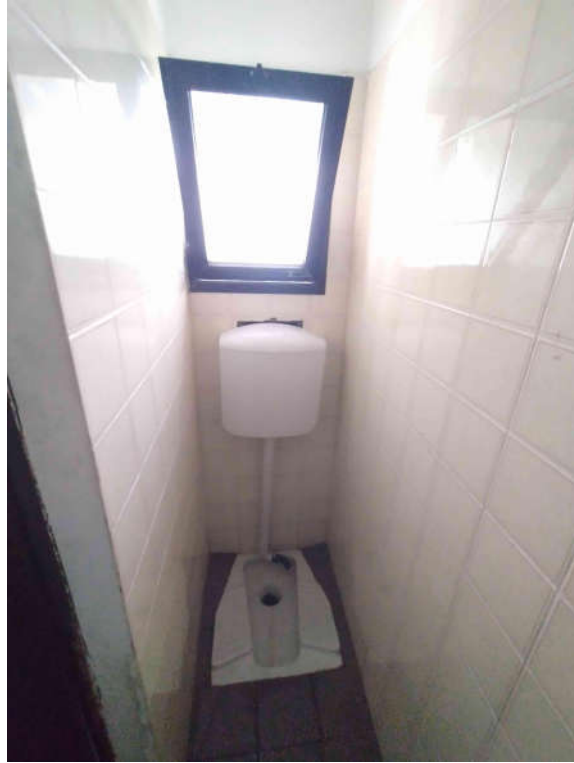


11. negozio



12. vano tecnico

13. latrina



14. magazzino 4





15. magazzino 2

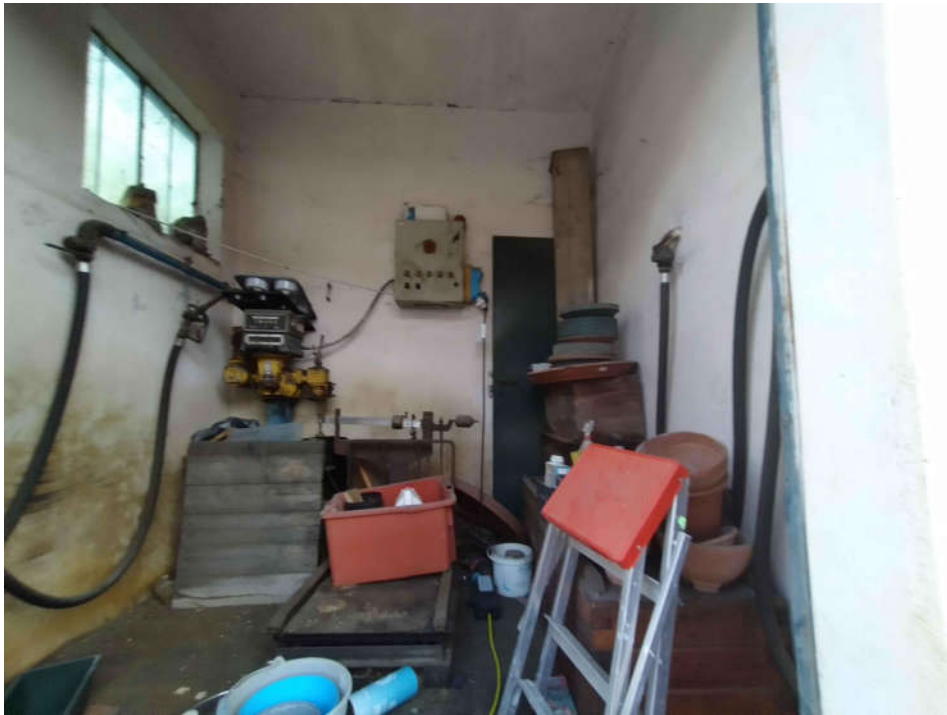
16. magazzino 5



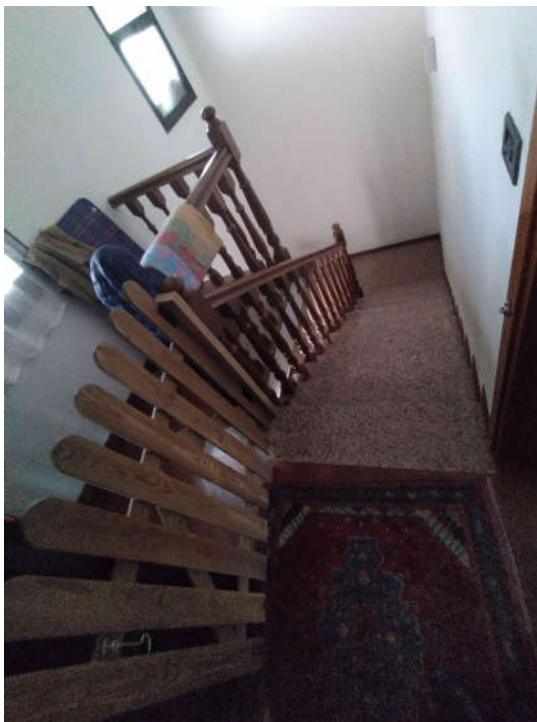


17. magazzino B

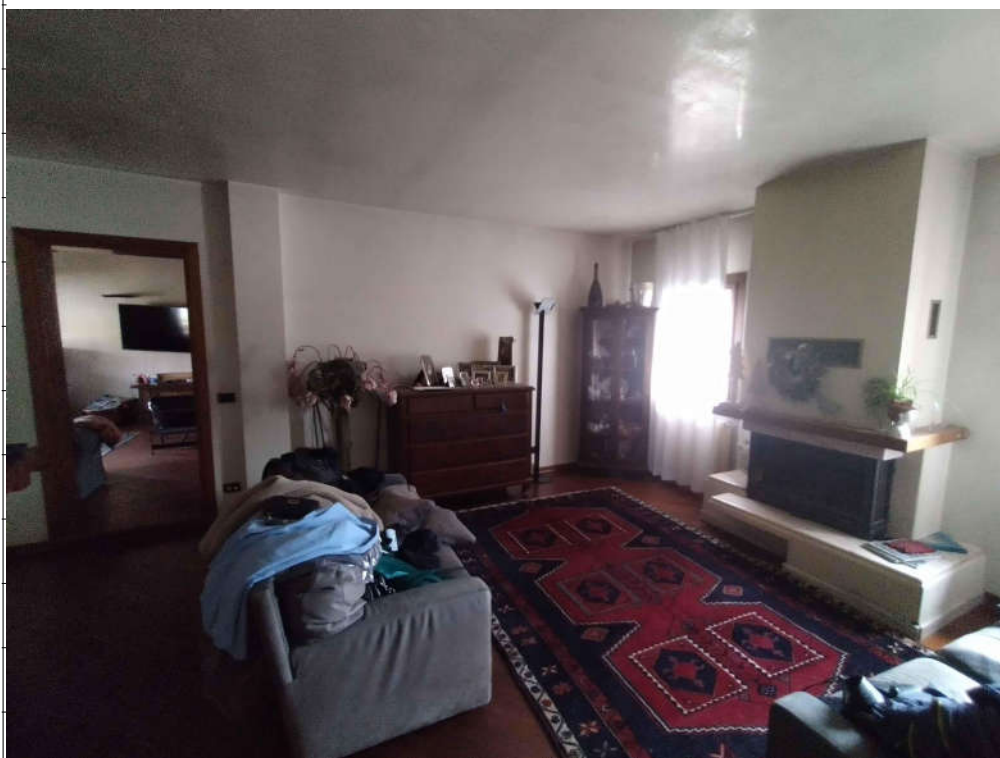
18. deposito C



19. scala (A.2)



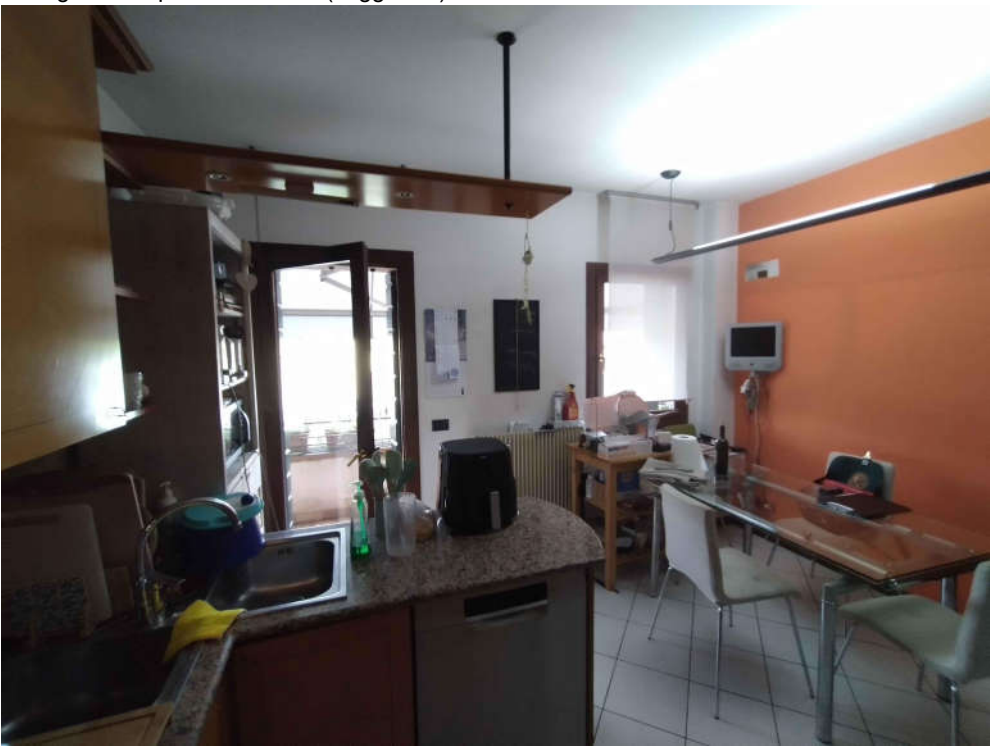
20. salotto





21. sgombero per l'abitazione (soggiorno)

22. cucina





23. terrazzino

24. disimpegno





25. camera 1

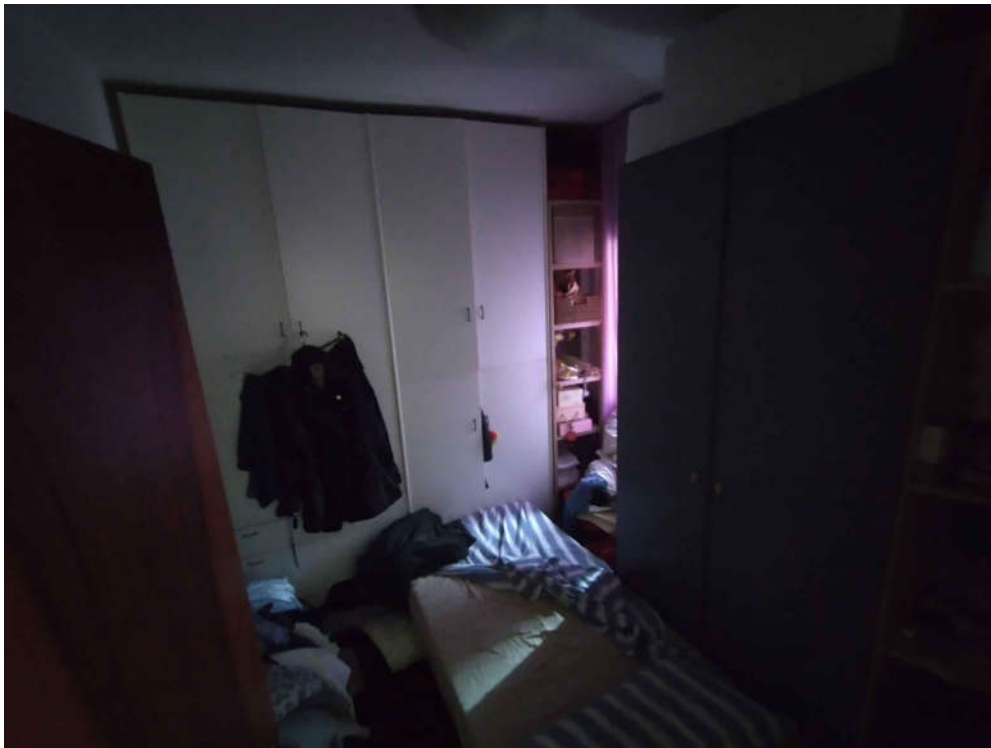
26. camera 2





27. disimpegno (verso salotto)

28. camera 3





29. bagno

30. lavanderia - wc





31. vista su area Nord