

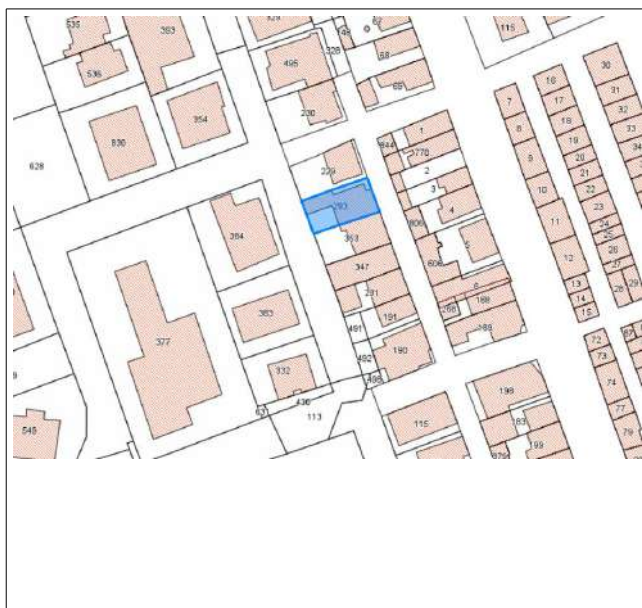
TRIBUNALE ORDINARIO DI FERMO

Ufficio Esecuzioni Immobiliari

Esecuzione Immobiliare n.25/2019

ALLEGATO N. 02 RILIEVO FOTOGRAFICO

LOCALIZZAZIONE





Fronte est su via Trento



Prospetto vista ovest



Prospetto angolo nord/ovest



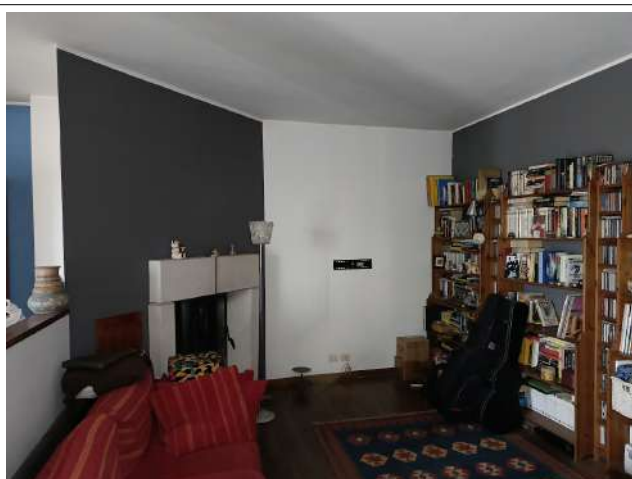
Vista panoramica ovest



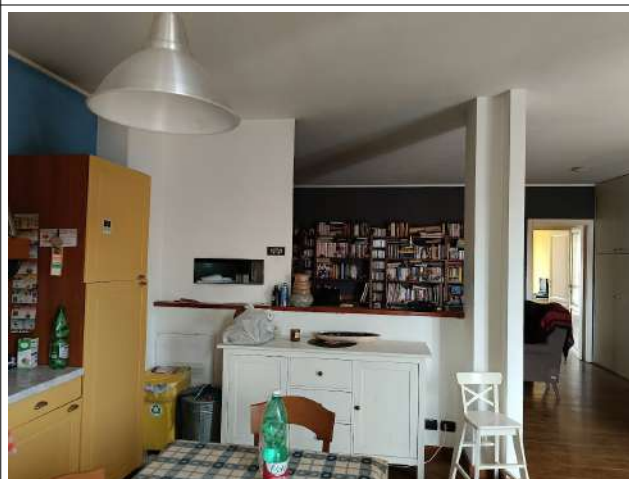
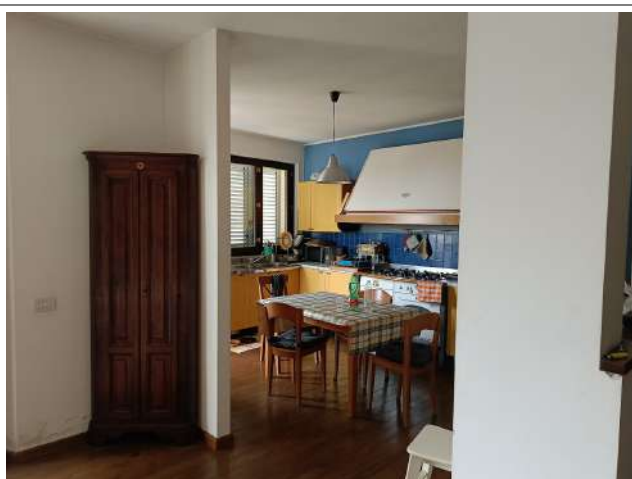
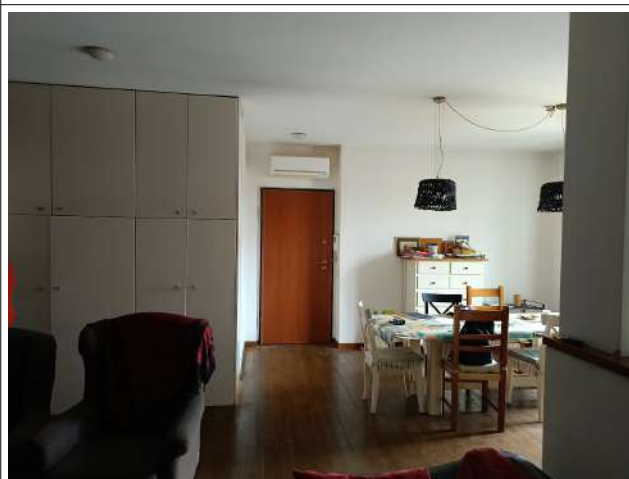
Vista panoramica ovest

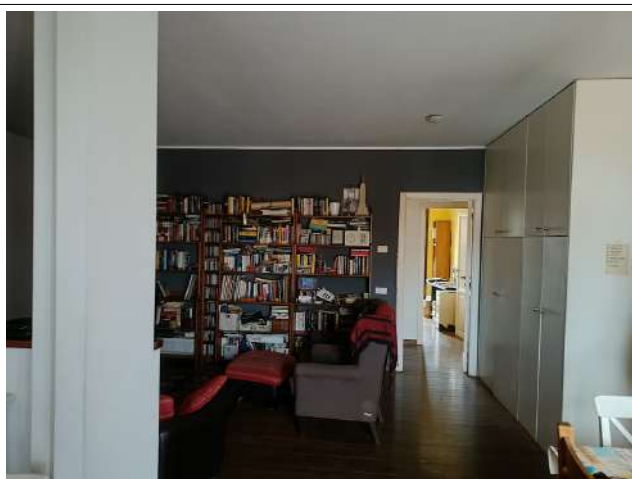
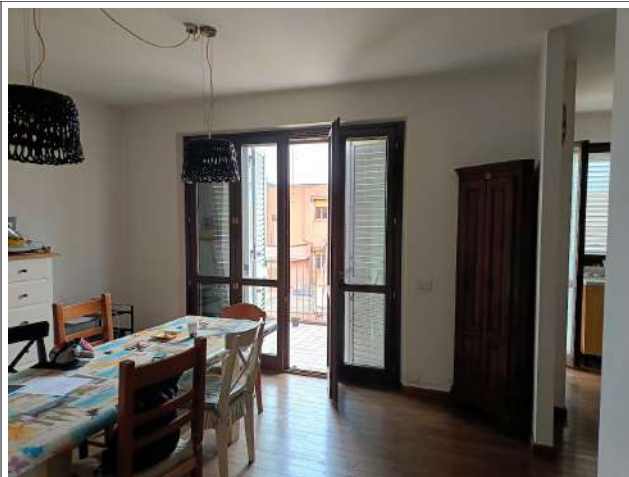


Vista est



Interno soggiorno/pranzo

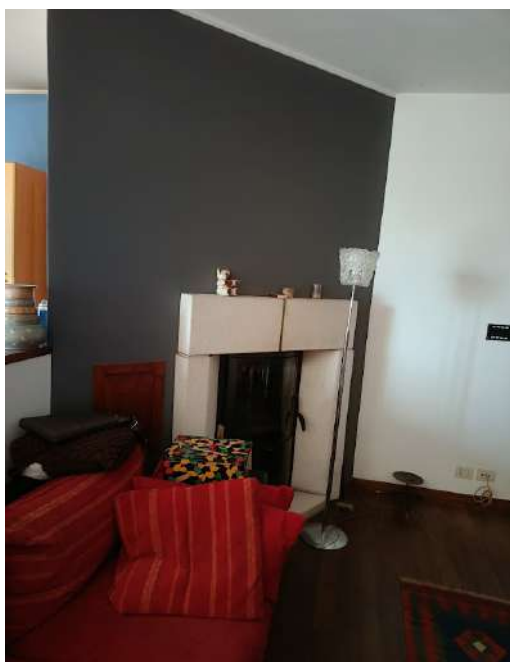




Vista soggiorno



Angolo pranzo



Part camino



Bagno principale



camera



Bagno principale



Bagno 2



Bagno 2



Bagno 2



Camera con affaccio balcone



Cameretta/studio con affaccio balcone



Camera matrimoniale con affaccio balcone

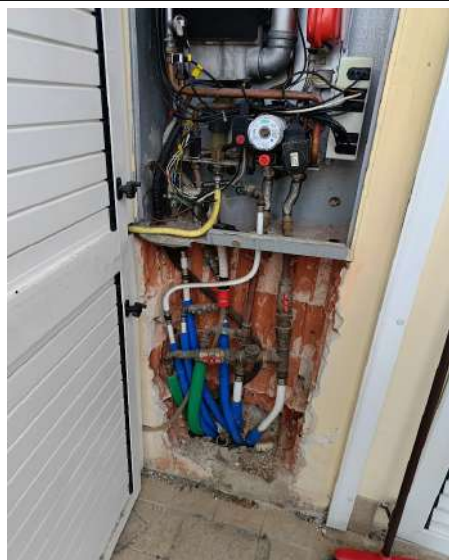




alcove est



Balcone est



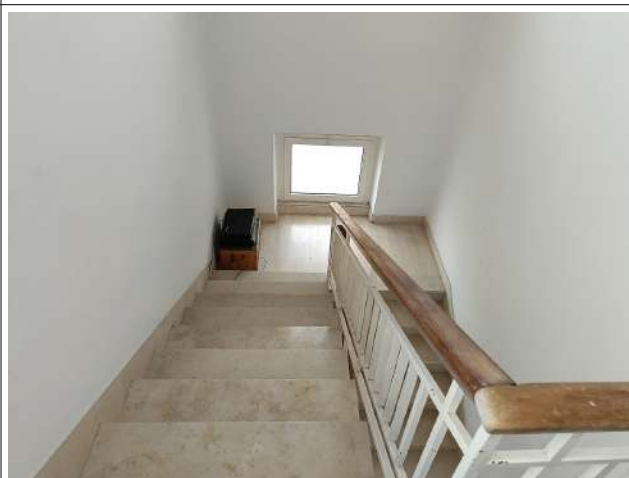
Vano caldaia su balcone est



Part portone ingresso blindato



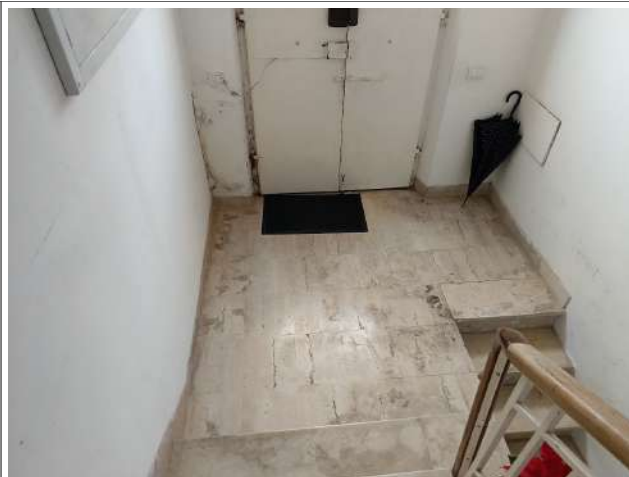
Part botola accesso soffitta da scala condomiale



Part scala condominiale



Part ingresso condominiale su via trento



Ingresso piano s1 da scala condominiale



Disimpegno accesso cantina



cantina



Cantina



Part.



Quadri energia elettrica su scala condominiale



Corte esterna consominiale con quadri gas etc