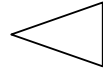
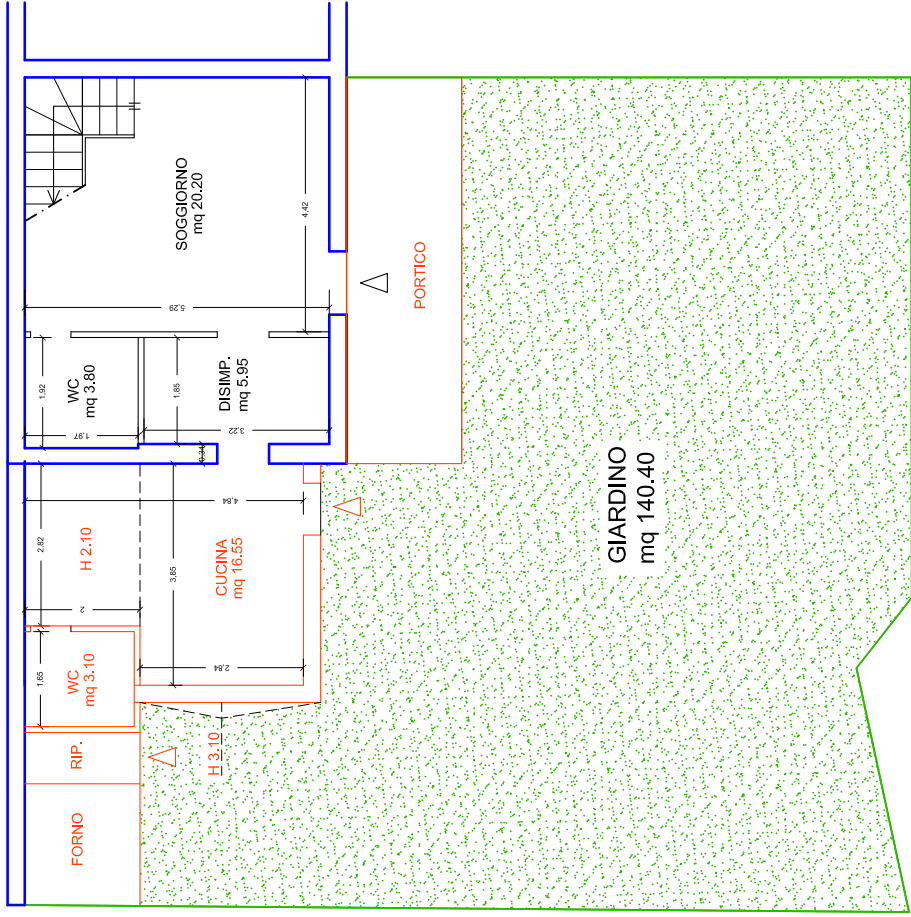
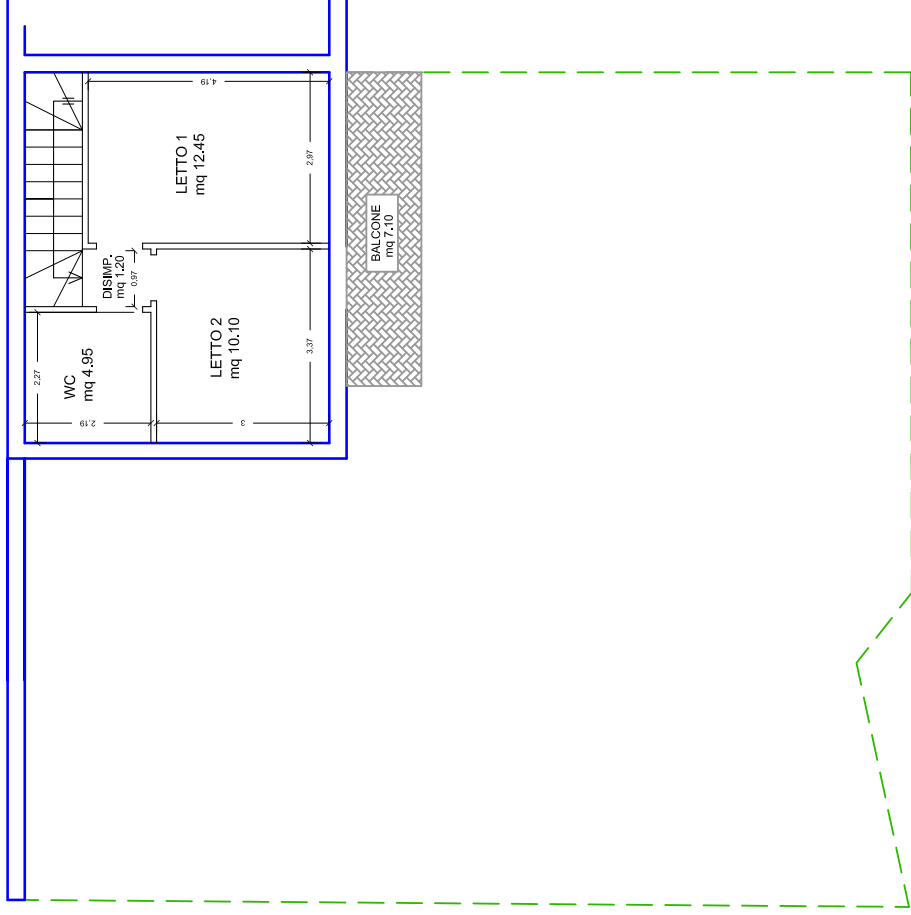


RILIEVO STATO DI FATTO
 alla data del sopralluogo 08.06.2024
 appartamento con giardino sito in Ardea via Campo di Carne



P.T. SUP. LORDA RESID. MQ. 39.35
 P.T. SUP. UTILE RESID. MQ. 33.90
 GIARDINO MQ 140.40

SUP. APPARENTEMENTE NON REGOLARE
P.T. SUP. UTILE RESID. MQ. 19.65
PORTICO circa mq 14
RIPOSTIGLIO
FORNO IN MURATURA



P.T. SUP. LORDA RESID. MQ. 39.35
 P.T. SUP. UTILE RESID. MQ. 28.70
 BALCONE MQ 7.10

