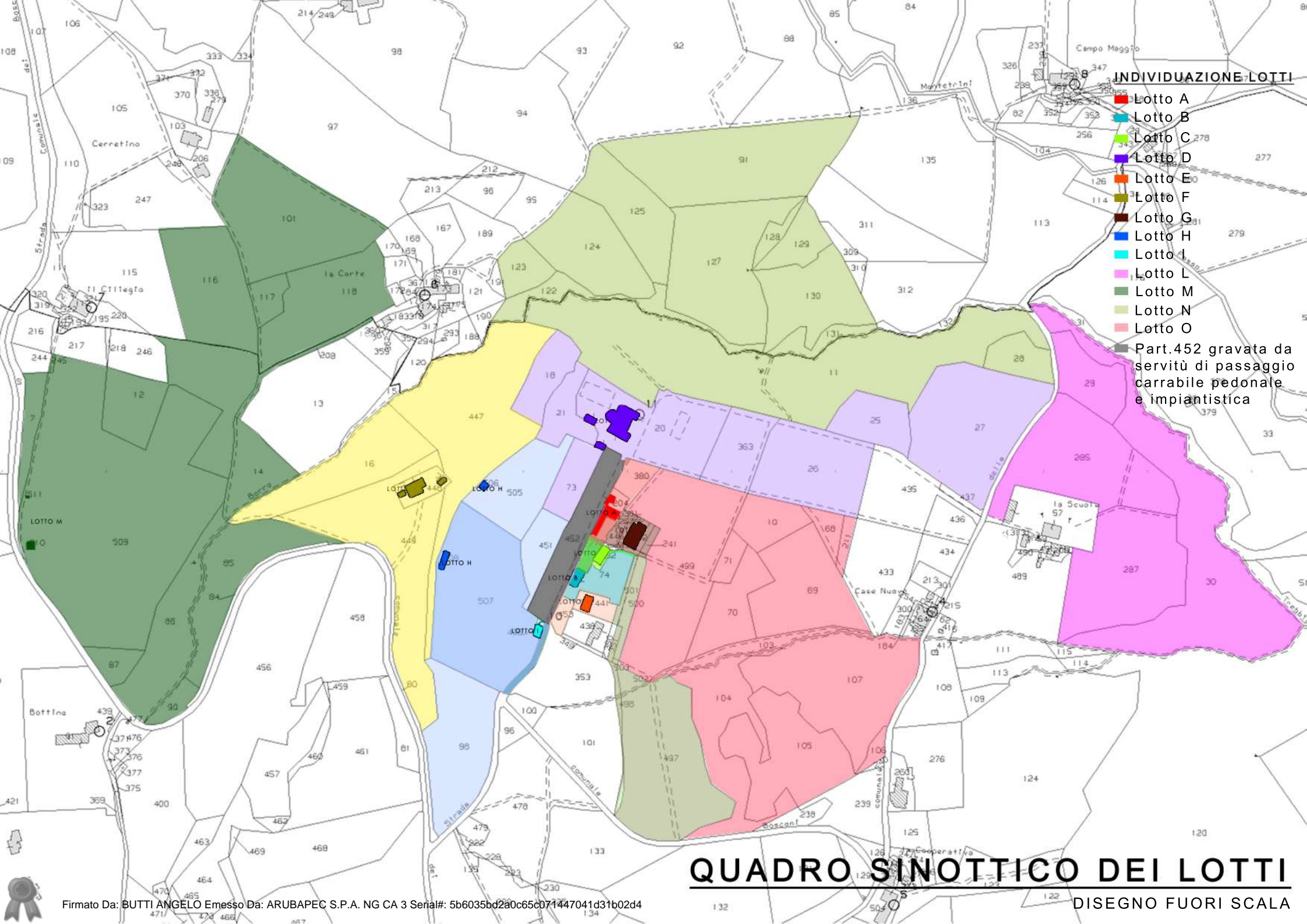


ALLEGATO 1
LOTTO D
ELABORATI GRAFICI

Località: Pontassieve, Via del Trebbiolo 8

Villa



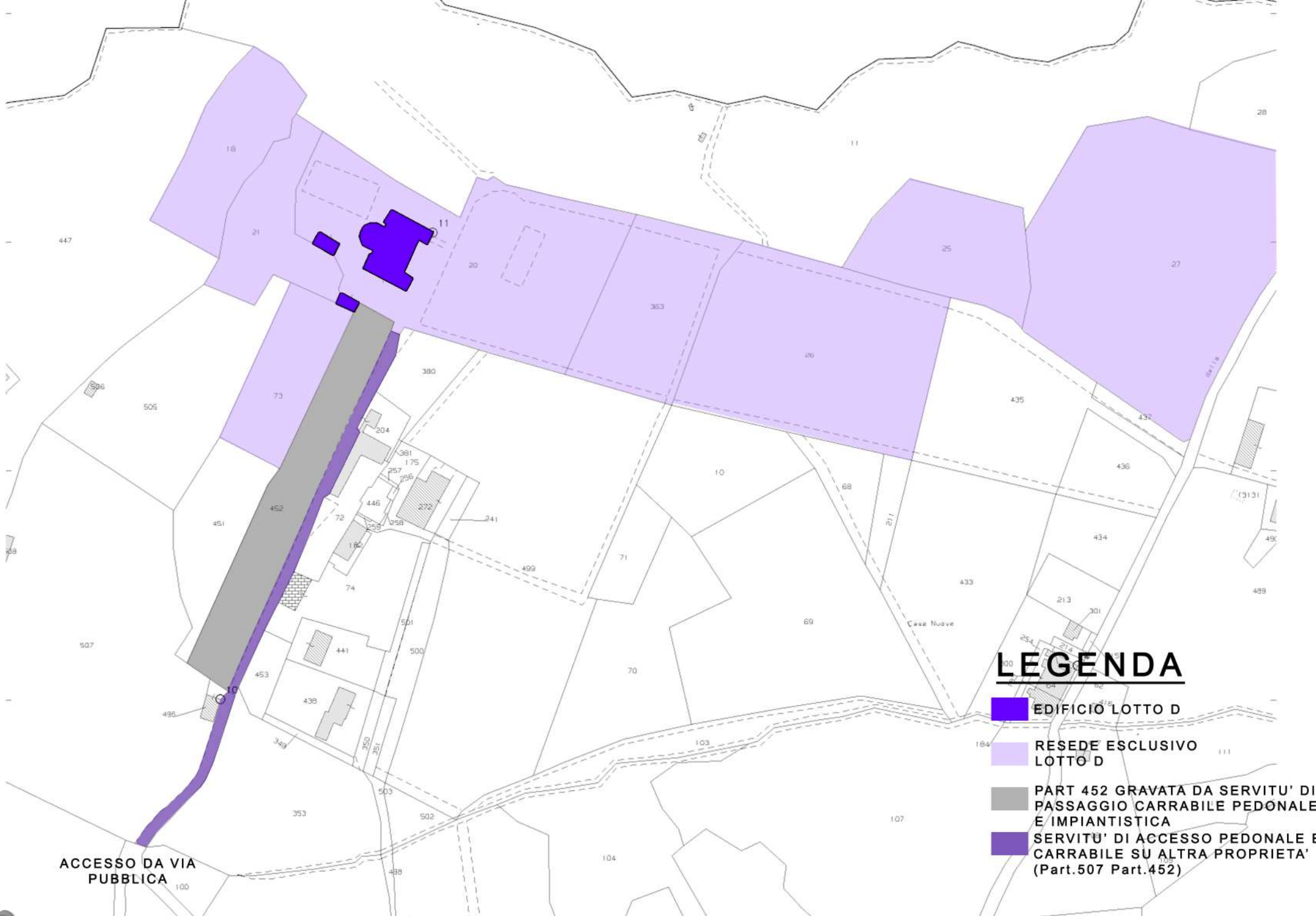


INDIVIDUAZIONE LOTTI

- Lotto A
- Lotto B
- Lotto C
- Lotto D
- Lotto E
- Lotto F
- Lotto G
- Lotto H
- Lotto I
- Lotto L
- Lotto M
- Lotto N
- Lotto O
- Part.452 gravata da servitù di passaggio carrabile pedonale e impiantistica

QUADRO SINOTTICO DEI LOTTI

DISEGNO FUORI SCALA



LEGENDA

- EDIFICIO LOTTO D
- RESEDE ESCLUSIVO LOTTO D
- PART 452 GRAVATA DA SERVITU' DI PASSAGGIO CARRABILE PEDONALE E IMPIANTISTICA
- SERVITU' DI ACCESSO PEDONALE E CARRABILE SU ALTRA PROPRIETA' (Part.507 Part.452)

ACCESSO DA VIA PUBBLICA

RESEDE ESCLUSIVO
8355.37 mq

21

Resede esclusivo

Annessi

73

Villa

452

Resede esclusivo

380

Piscina

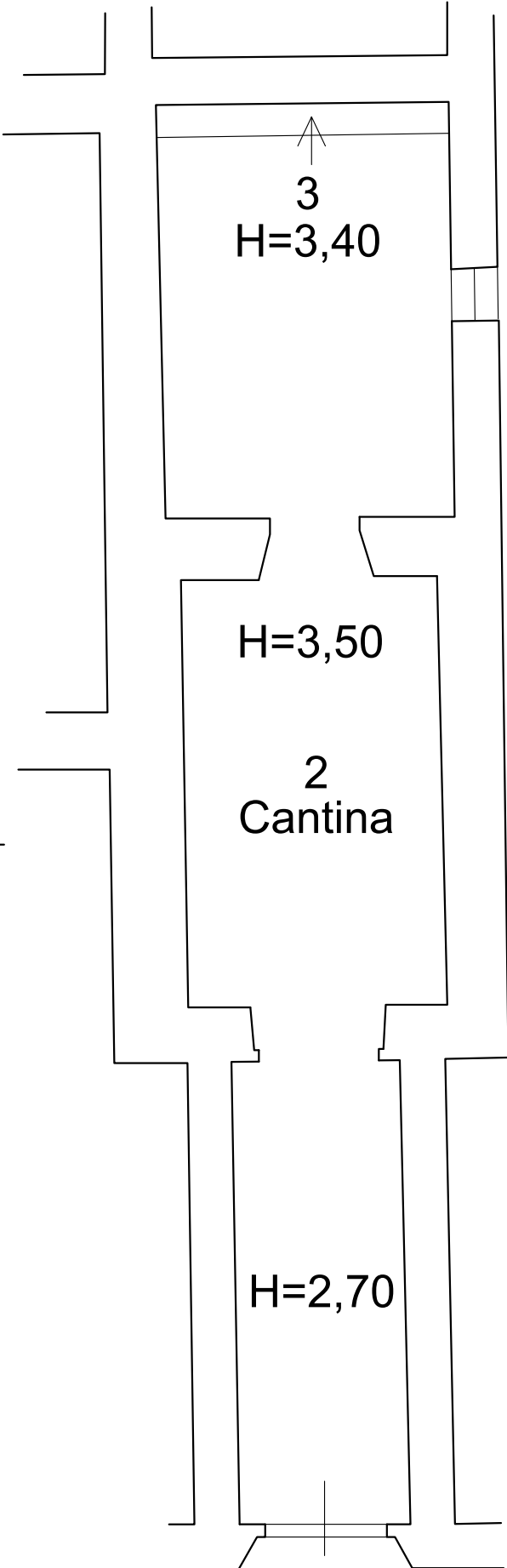
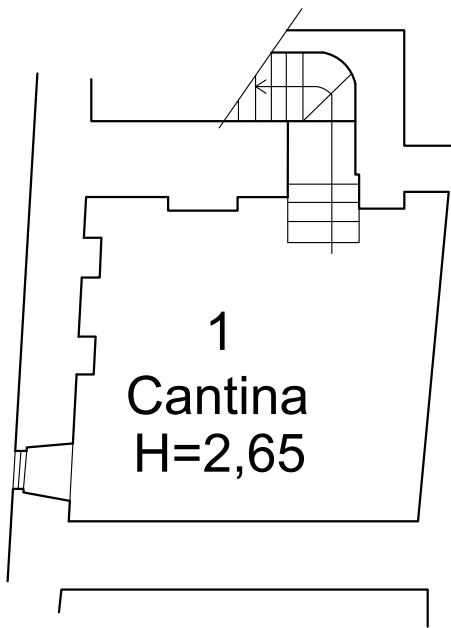
352



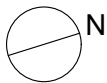
Resede esclusivo

PIANO TERRA
STATO RILEVATO
Scala 1:500

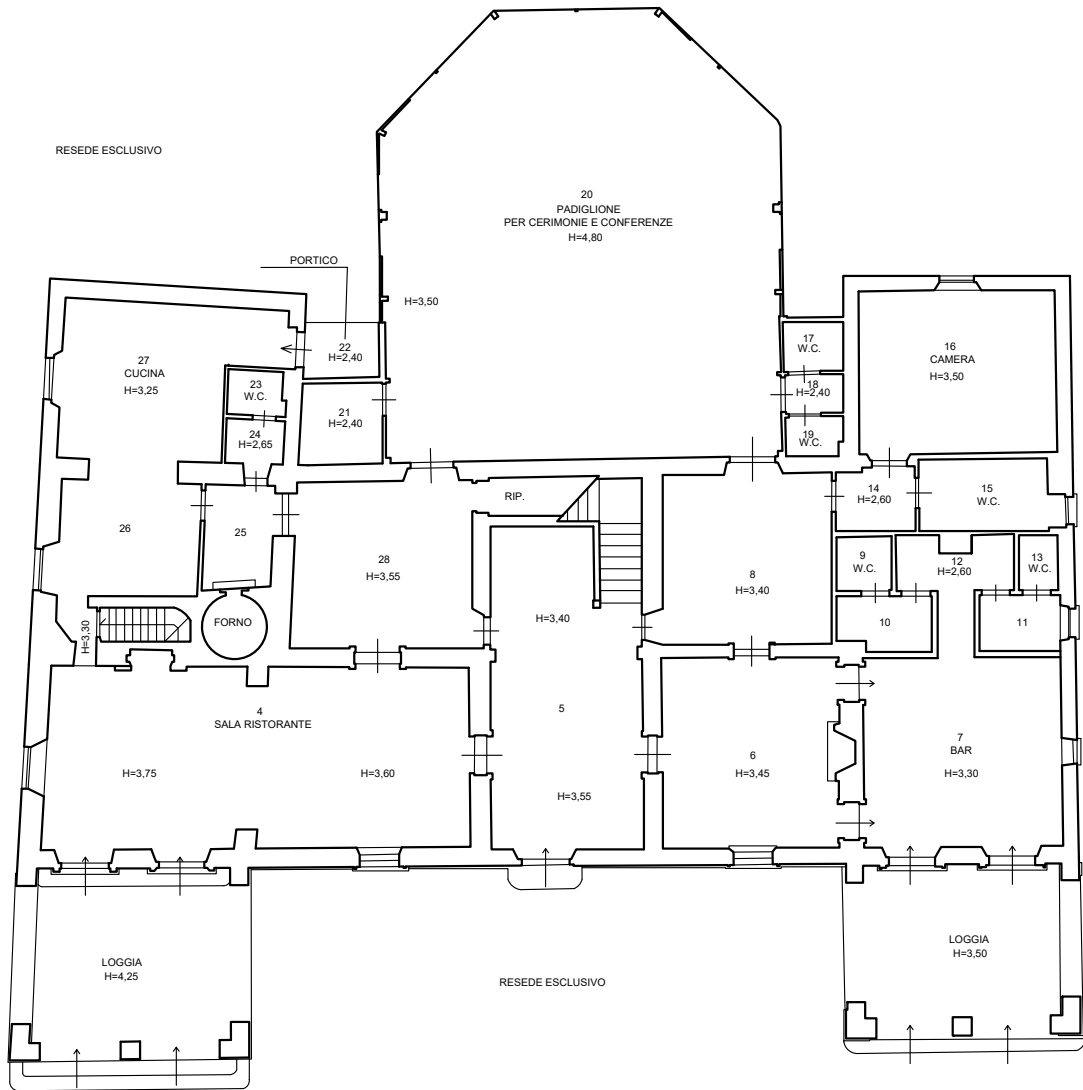
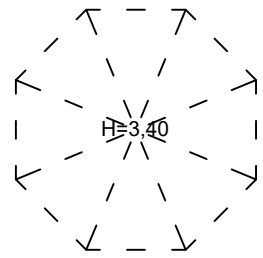
Lato Via del Trebbio



SUPEFICIE LORDA TOTALE	
	136,86 mq
SUPEFICIE INTERNA NETTA	
1	20,02 mq
2	48,15 mq
3	29,57 mq
TOTALE	
	97,74 mq



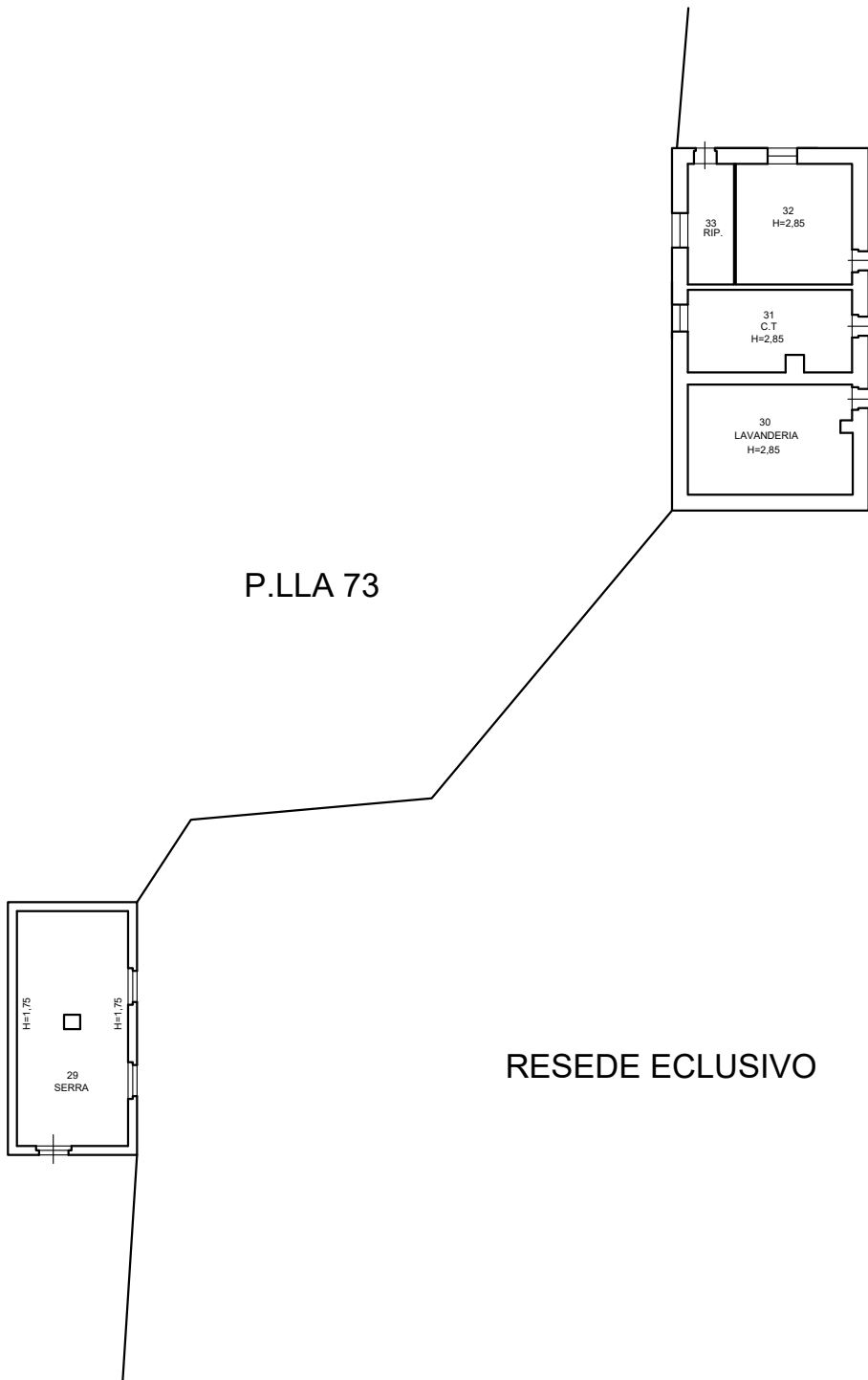
VILLA
PIANO SEMINTERRATO
STATO RILEVATO
Scala 1:100



SUPEFICIE LORDA TOTALE	
	556,31 mq
SUPEFICIE INTERNA NETTA	
4	55,44 mq
5	37,00 mq
6	24,78 mq
7	27,58 mq
8	21,42 mq
9	2,10 mq
10	3,54 mq
11	3,18 mq
12	6,00 mq
13	1,51 mq
14	3,53 mq
15	7,00 mq
16	22,93 mq
17	2,10 mq
18	1,60 mq
19	1,60 mq
20	117,62 mq
21	4,72 mq
22	2,95 mq
23	1,79 mq
24	4,72 mq
25	5,33 mq
26	13,50 mq
27	21,46 mq
28	21,18 mq
TOTALE	
	414,58 mq



VILLA
PIANO TERRA
STATO RILEVATO
Scala 1:200

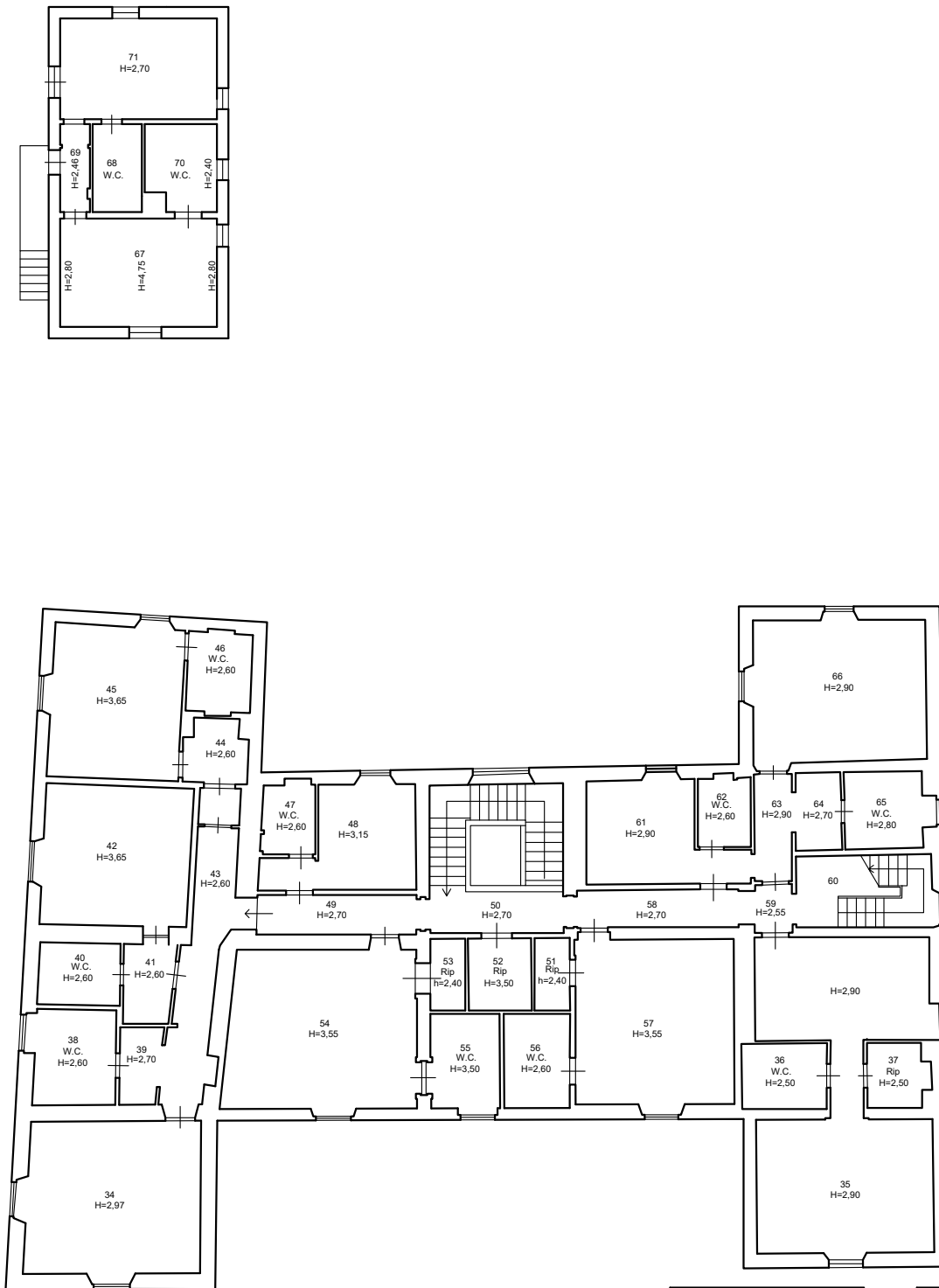


SUPEFICIE LORDA TOTALE	
	25,36 mq
SUPEFICIE INTERNA NETTA	
29	20,10 mq
SUPEFICIE LORDA TOTALE	
	55,34 mq
SUPEFICIE INTERNA NETTA	
30	13,98 mq
31	10,28 mq
32	10,89 mq
33	4,31 mq
TOTALE	
	39,46 mq



ANNESI
PIANO TERRA
STATO RILEVATO
Scala 1:200

Lato Via del Trebbio

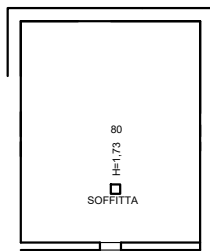


SUPEFICIE LORDA TOTALE VILLA	
423,26 mq	
SUPEFICIE NETTA INTERNA VILLA	
34	25,04 mq
35	41,30 mq
36	5,23 mq
37	3,55 mq
38	7,60 mq
39	2,88 mq
40	4,70 mq
41	3,66 mq
42	19,17 mq
43	11,10 mq
44	5,10 mq
45	18,97 mq
46	4,90 mq
47	3,58 mq
48	11,65 mq
49	5,86 mq
50	9,76 mq
51	2,38 mq
52	4,22 mq
53	2,33 mq
54	27,82 mq
55	6,10 mq
52	5,77 mq

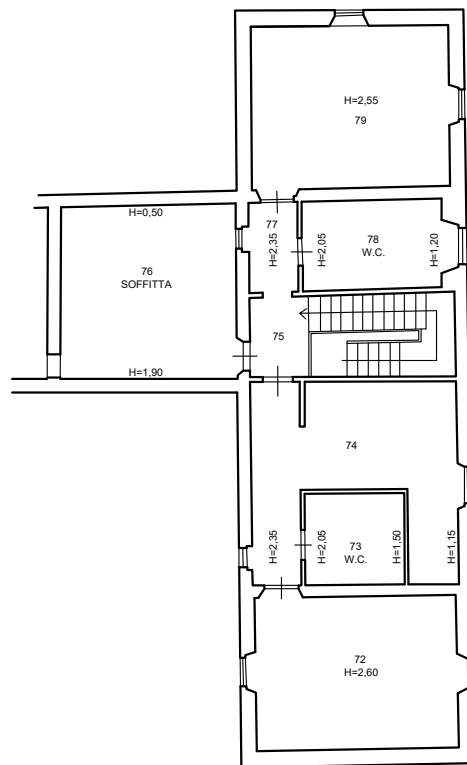
53	2,33 mq
54	27,82 mq
55	6,10 mq
56	5,77 mq
57	24,26 mq
58	6,00 mq
59	1,67 mq
60	9,32 mq
61	12,25 mq
62	3,45 mq
63	3,75 mq
64	3,28 mq
65	5,98 mq
66	23,55 mq
TOTALE	
368,20 mq	
SUPEFICIE LORDA TOTALE ANNESSO	
55,34 mq	
SUPEFICIE NETTA INTERNA ANNESSO	
67	15,77 mq
68	4,02 mq
69	2,40 mq
70	5,50 mq
71	14,67 mq
TOTALE	
42,36 mq	
TOTALE SUPERFICIE LORDA	
478,80 mq	
TOTALE SUPERFICIE NETTA	
410,56 mq	



VILLA
PIANO PRIMO
STATO RILEVATO
Scala 1:200

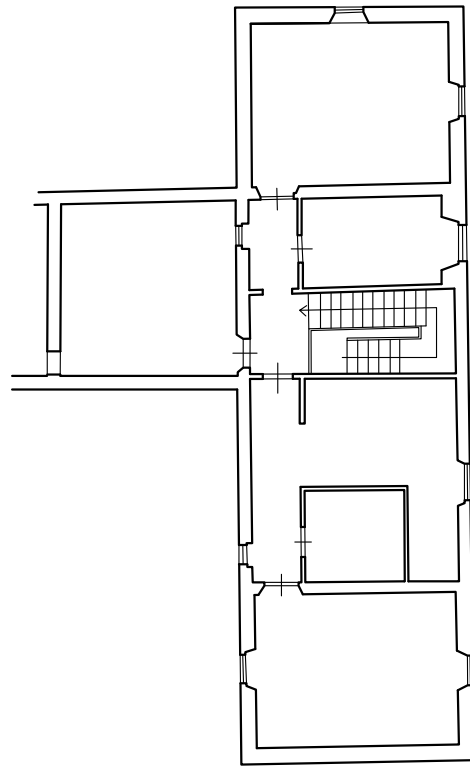
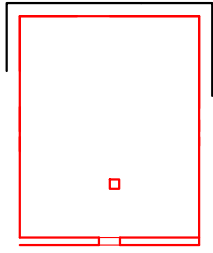


Lato Via del Trebbio



VILLA
PIANO SECONDO
STATO RILEVATO
Scala 1:200

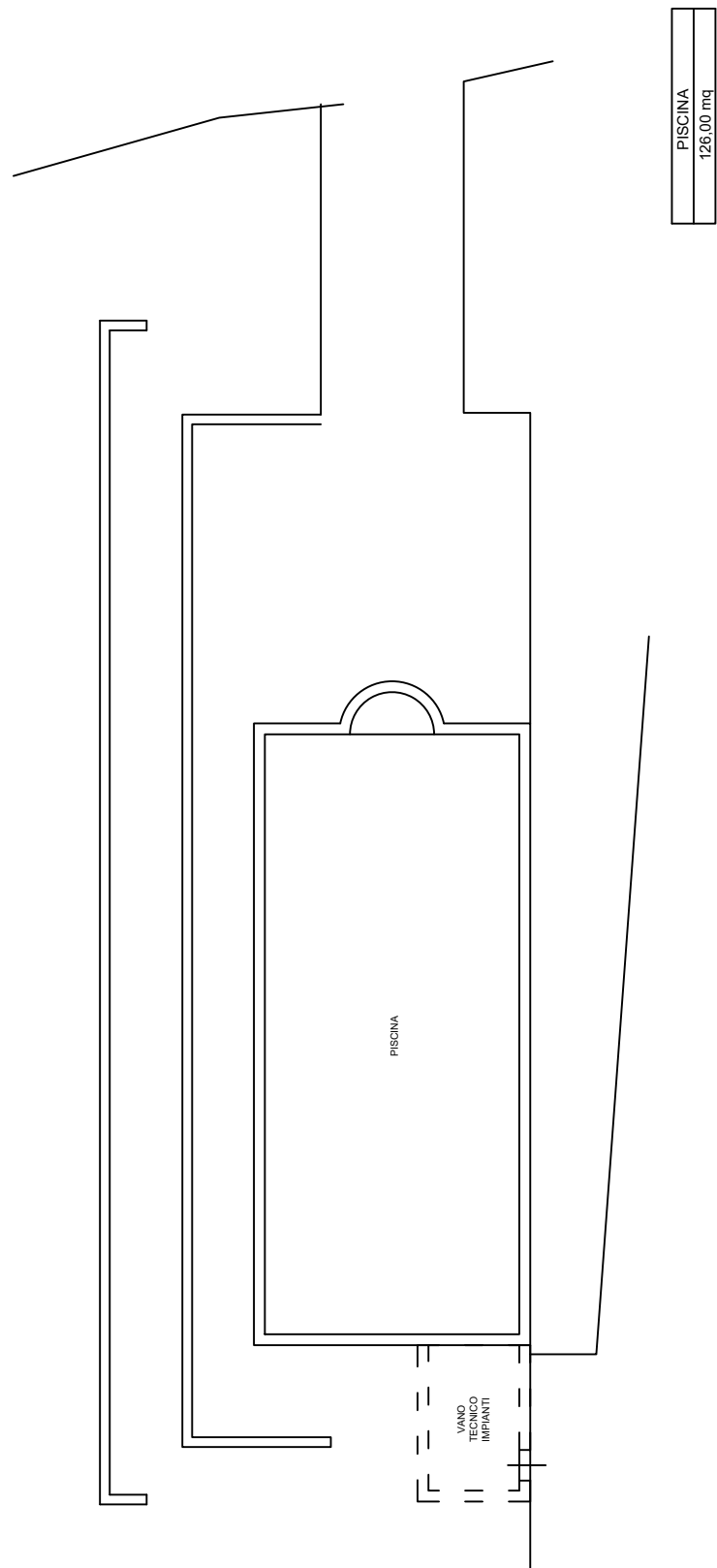
SUPEFICIE LORDA TOTALE VILLA	
	116,50 mq
SUPEFICIE NETTA INTERNA VILLA	
72	21,90 mq
73	6,43 mq
74	22,35 mq
75	4,98 mq
76	21,71 mq
77	3,12 mq
78	9,40 mq
79	22,80 mq
TOTALE	
	112,69 mq
SUPEFICIE LORDA TOTALE SOPPALCO	
	33,27 mq
SUPEFICIE INTERNA TOTALE SOPPALCO	
80	28,14 mq
TOTALE SUPERFICIE LORDA	
	149,77 mq
TOTALE SUPERFICIE NETTA	
	140,83 mq



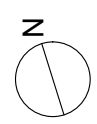
Lato Via del Trebbio



VILLA
PIANO SECONDO
STATO SOVRAPPOSTO
Scala 1:200



PISCINA
126,00 mq



PISCINA
 STATO RILEVATO
 Scala 1:100