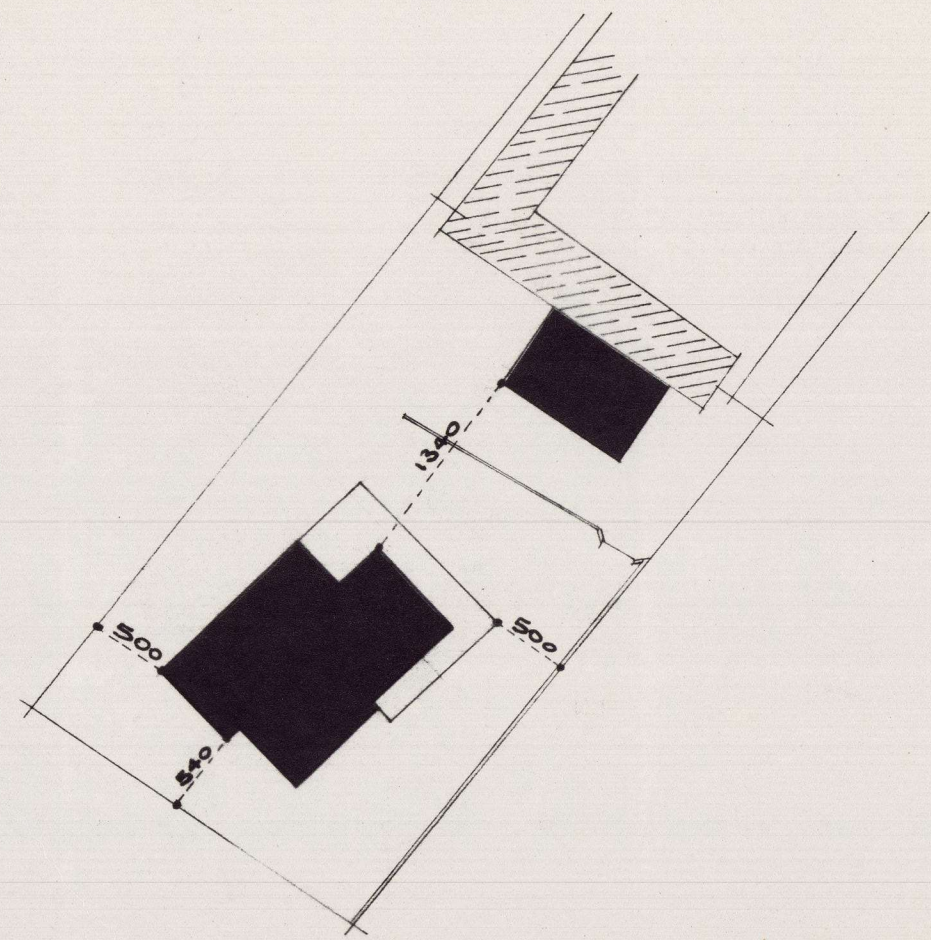
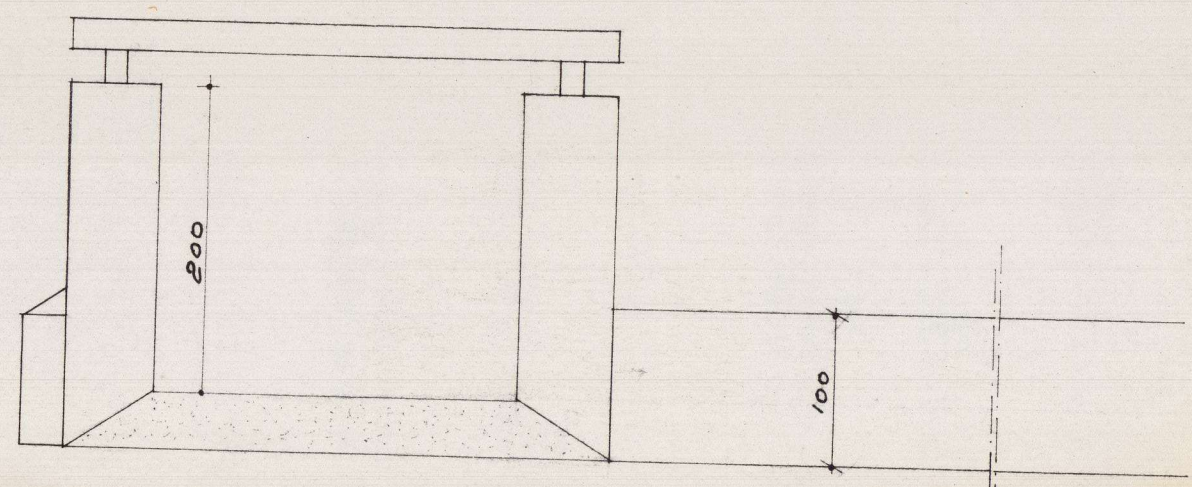


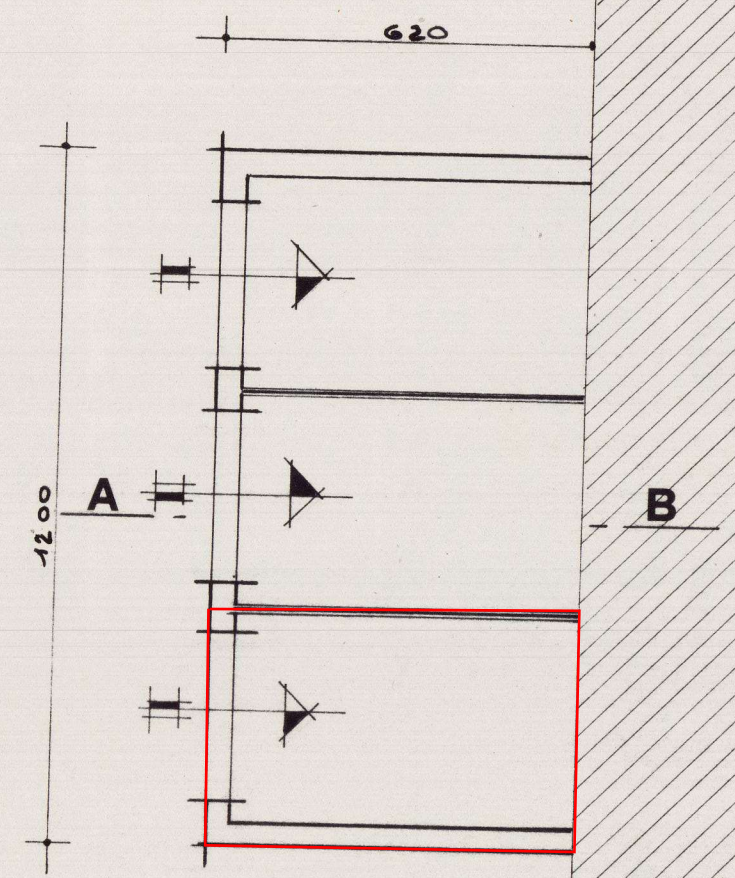
DOC. 17



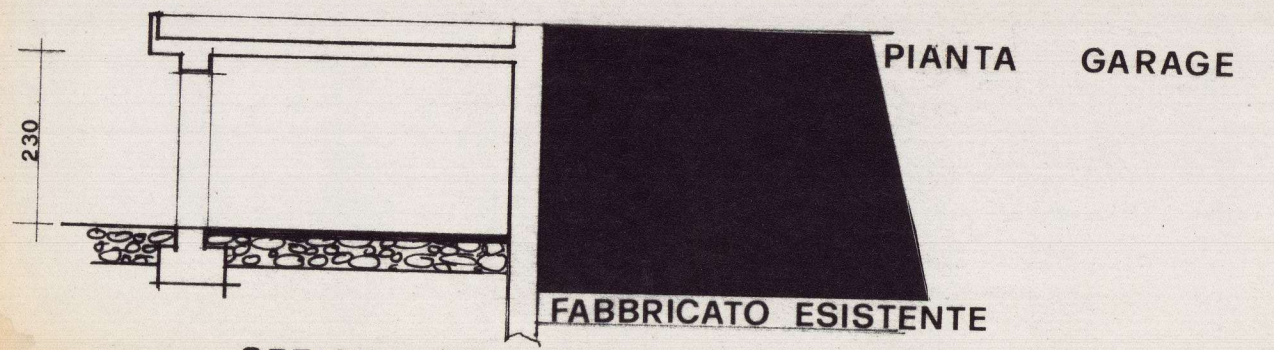
PARTICOLARE 1:500



PARTICOLARE ACCESSO



SEZIONE A:B



ARSCIANO
 orevole della
 Comunale
 N. 1077
 CONCESSIONE
 C. 1982
 SINDACO
 ORE DELEGATO
 riano (scini)

NO
 ZARRI CARLO
 ALBO
 GEOMETRI
 PROV. PERUGIA
 N. 1388
 RSC
 AVOLA
 3