



Foto 1: Vista esterna da via Agogna



Foto 2: Prospetto verso cortile interno

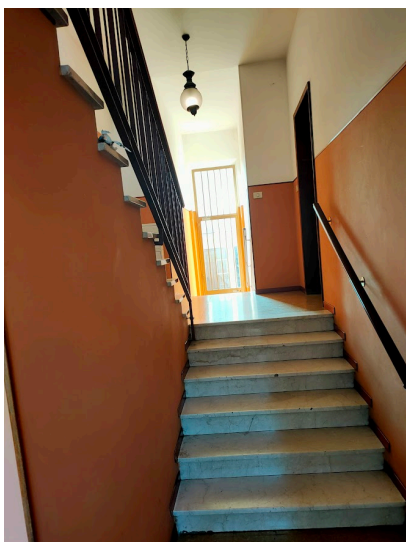


Foto 3: Atrio ingresso condominiale

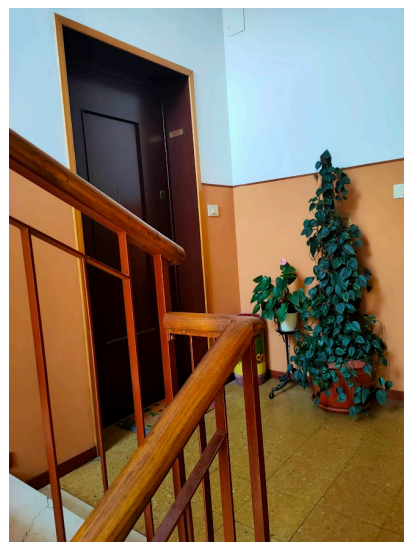


Foto 4: Porta ingresso alloggio vano scala



Foto 5: Porta ingresso alloggio vista interna



Foto 6: Atrio ingresso vista cucina



Foto 7: Atri ingresso vista camera e soggiorno



Foto 8: Cucina



Foto 9: Bagno

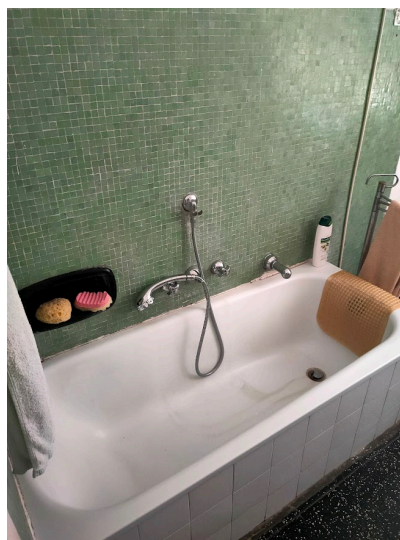


Foto 10: Bagno particolare vasca



Foto 11: Bagno: particolare lavabo

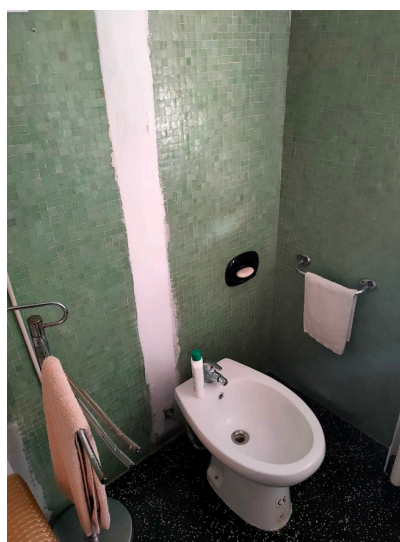


Foto 12: Bagno particolare bidet

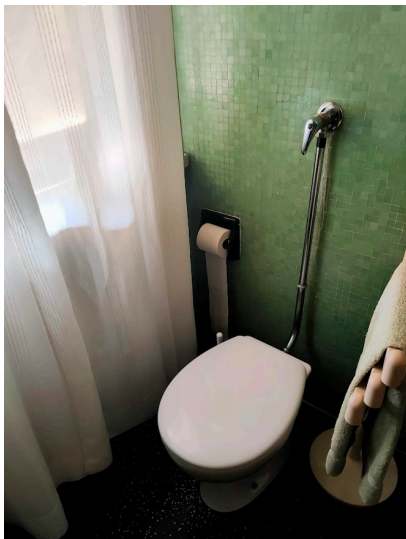


Foto 13: Bagno particolare vaso



Foto 14: Bagno boiler

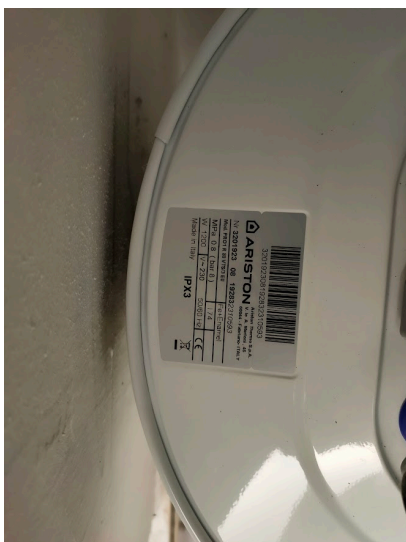


Foto 15: Bagno particolare boiler

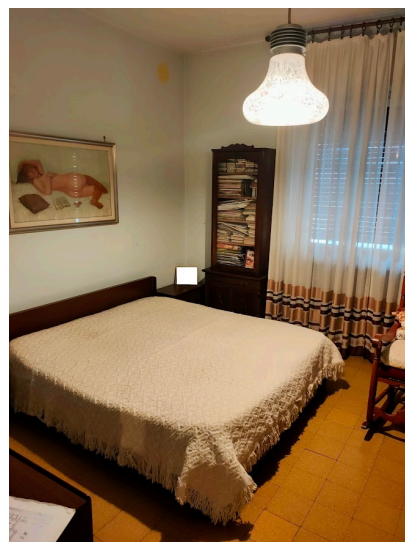


Foto 16: Camera da letto 1

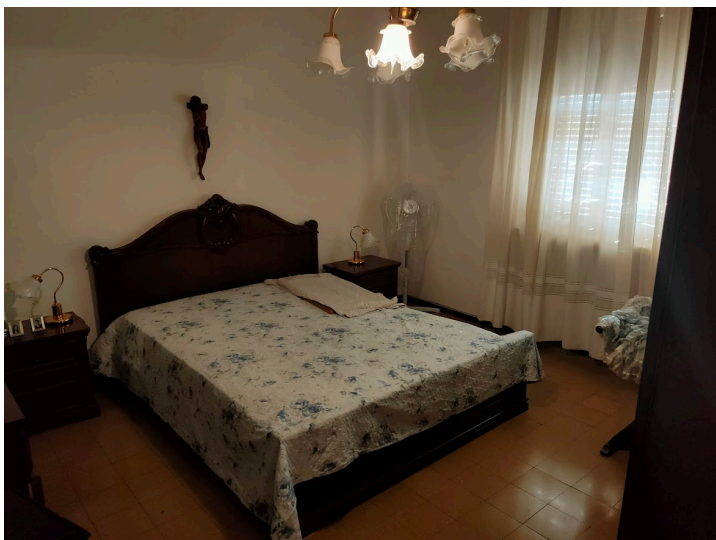


Foto 17: Camera da letto 2



Foto 18: Soggiorno



Foto 19: Cantina



Foto 20: Cantina



Foto 21: Autorimesse esterne in cortile



Foto 22: Autorimessa particolare serramda



Foto 23: Autorimessa



Foto 24: Interno autorimessa