

TRIBUNALE DI FOGGIA

ILL.mo G.E. Dott.ssa S. RIGNANESE

^^^^^^^^^^^^^^^^^^^^

**Procedura Esecutiva Immobiliare n. 574/17 R.G.Es.
promossa da:**

XXXXXXXXXXXXXXXXXXXXXXXXXXXX

Contro

XXXXXXXXXXXXXXXXXXXXXXXXXXXX

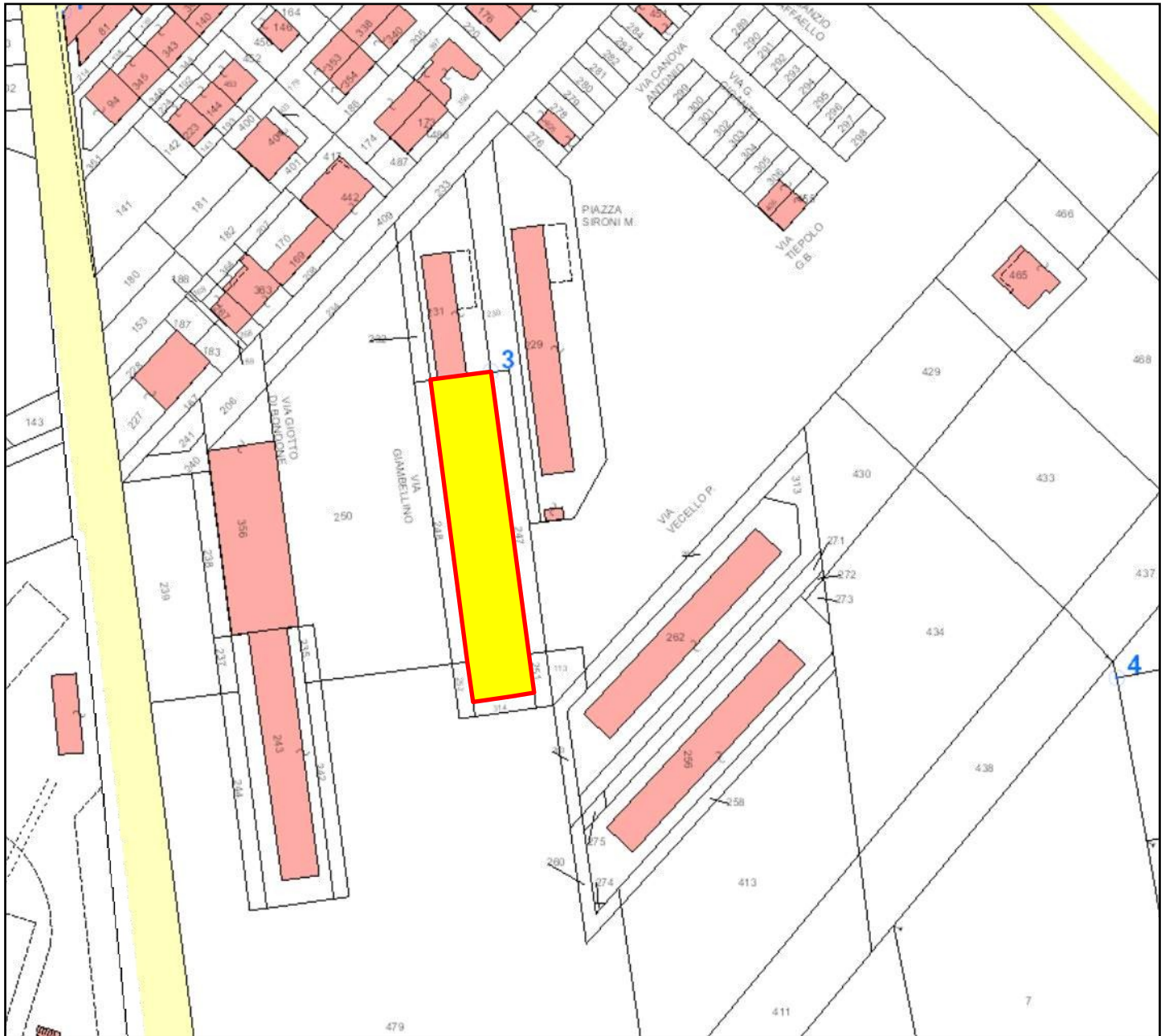
^^^^^^^^^^^^^^^^^^^^

ALLEGATO H

INQUADRAMENTO TERRITORIALE/CARTOGRAFICO



Catasto



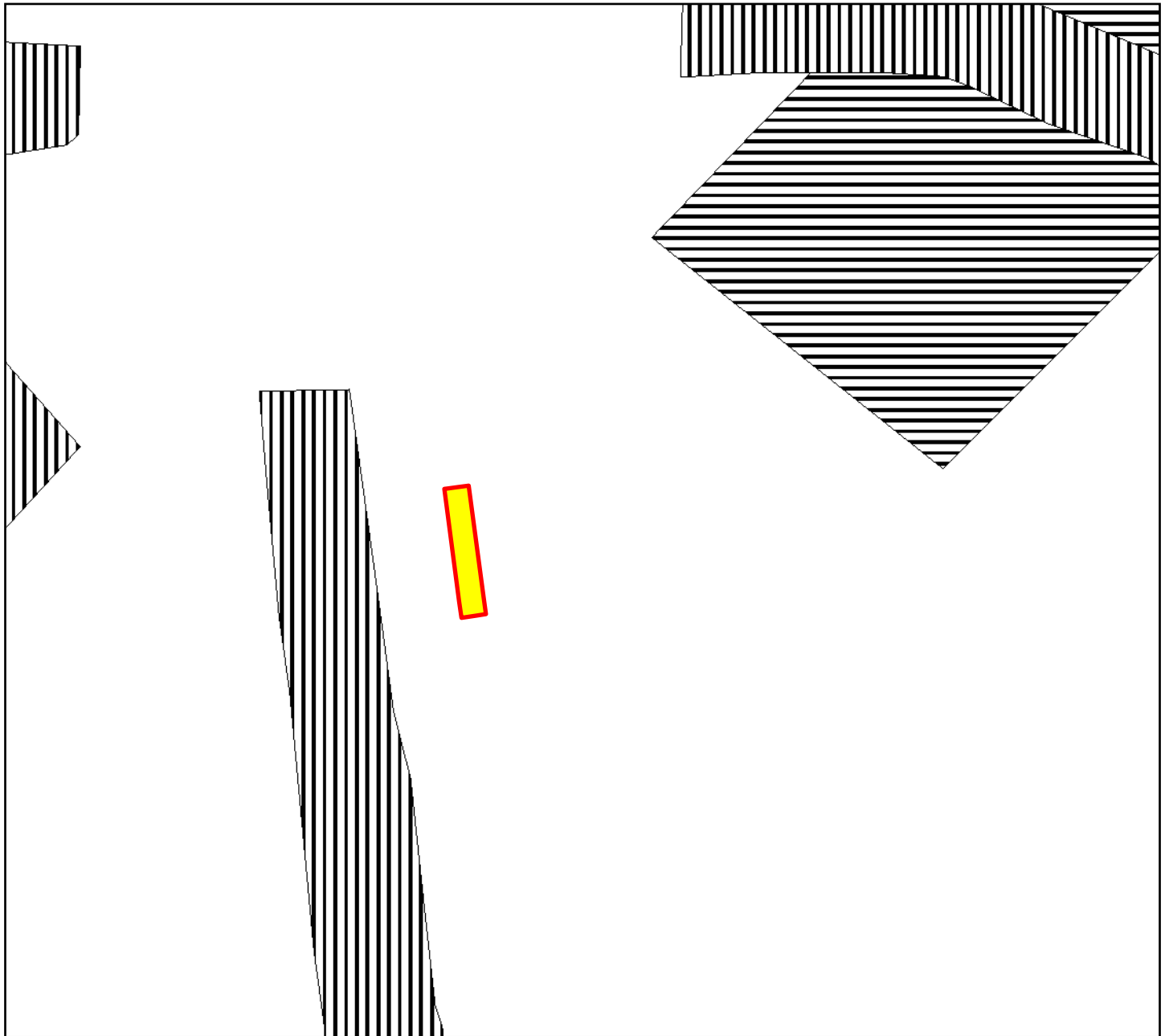
60m

1:2.000

Impossibile recuperare la mappa da https://services.arcgisonline.com/arcgis/rest/services/World_Topo_Map/MapServer



PUTT - Ambiti Territoriali Estesi



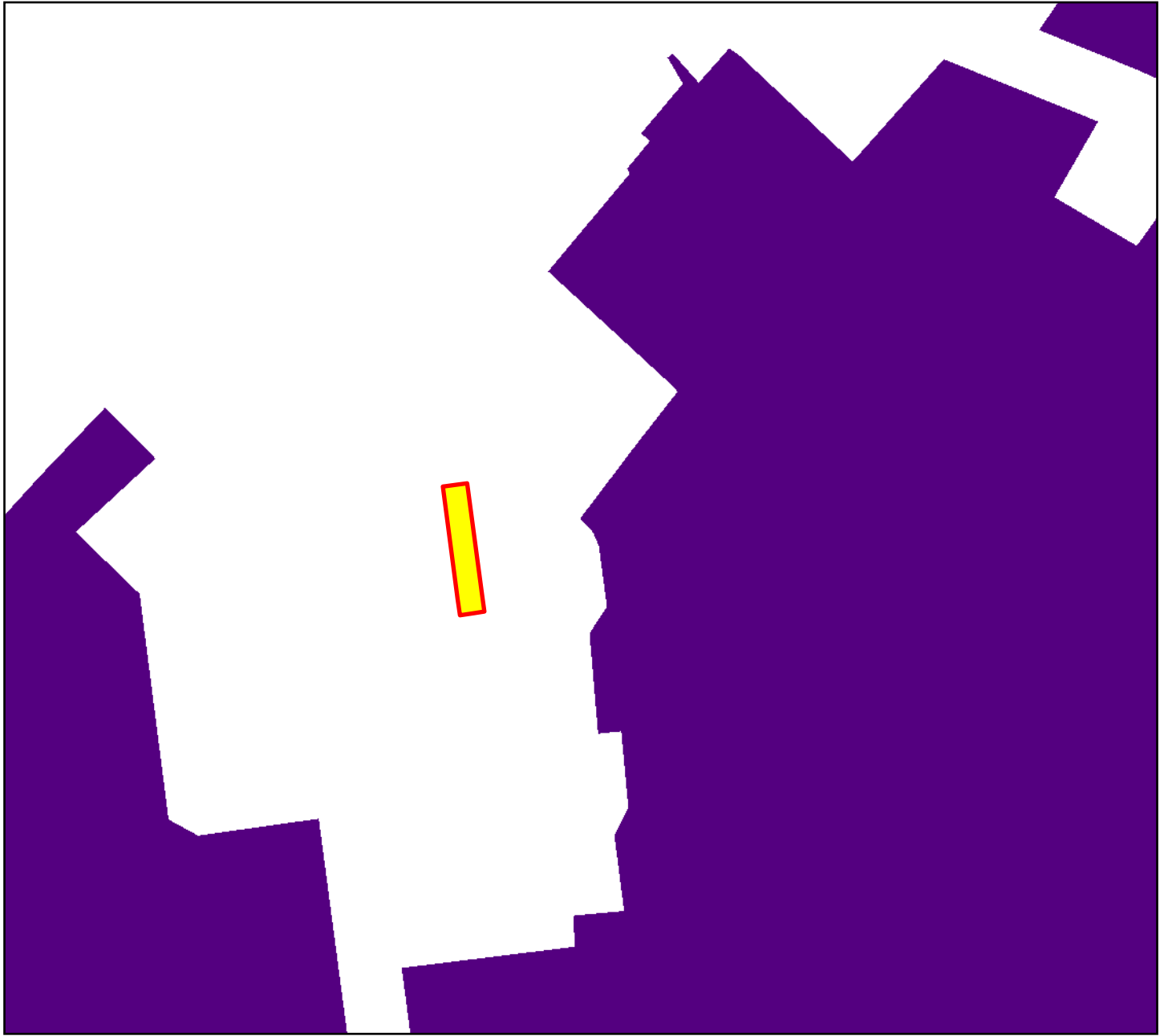
150m

1:5.000

Impossibile recuperare la mappa da https://services.arcgisonline.com/arcgis/rest/services/World_Topo_Map/MapServer



Tavola A2 - Vulnerabilità degli acquiferi



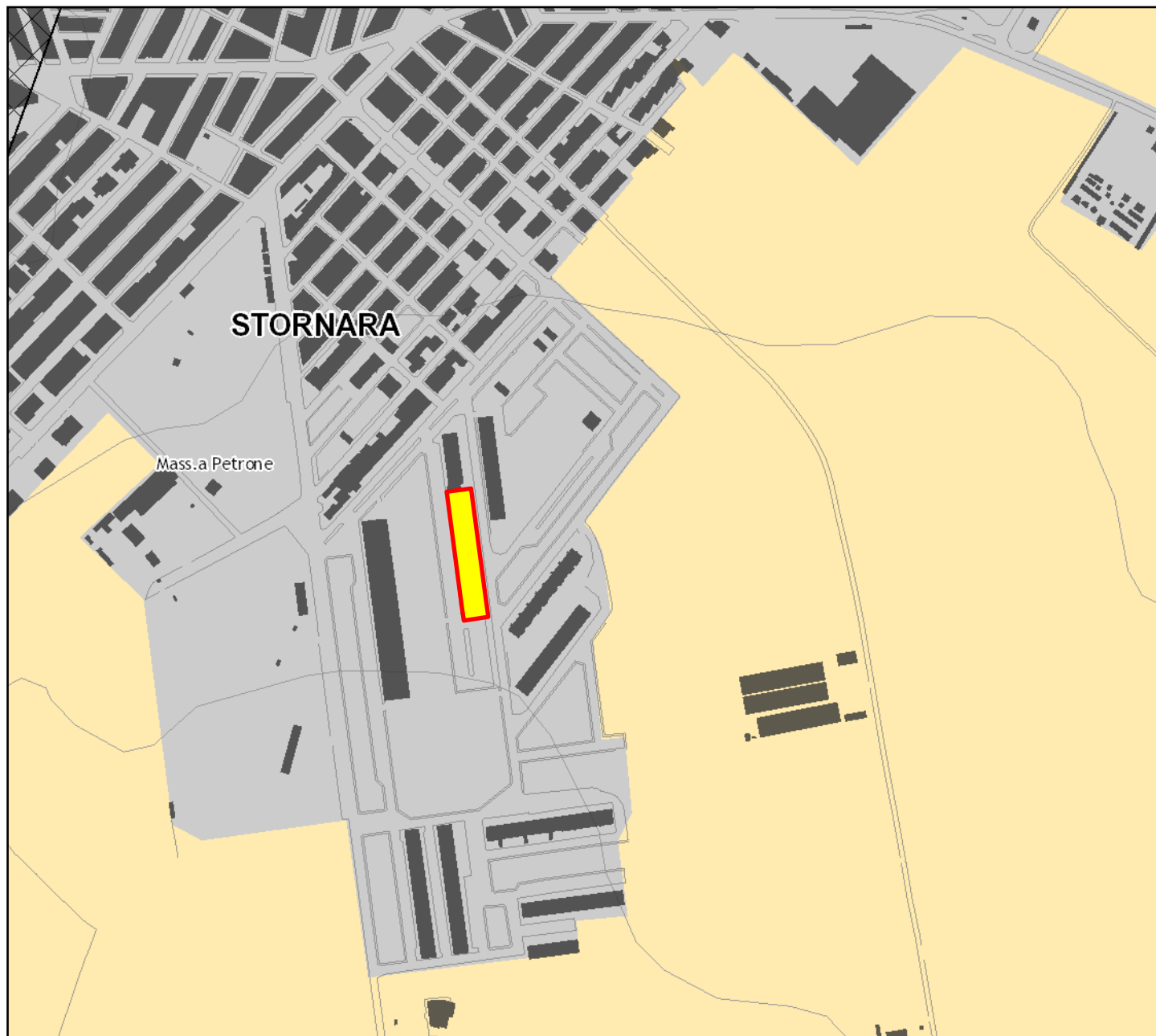
150m

1:5.000

Impossibile recuperare la mappa da https://services.arcgisonline.com/arcgis/rest/services/World_Topo_Map/MapServer



Tavola B1 - Elementi di matrice naturale

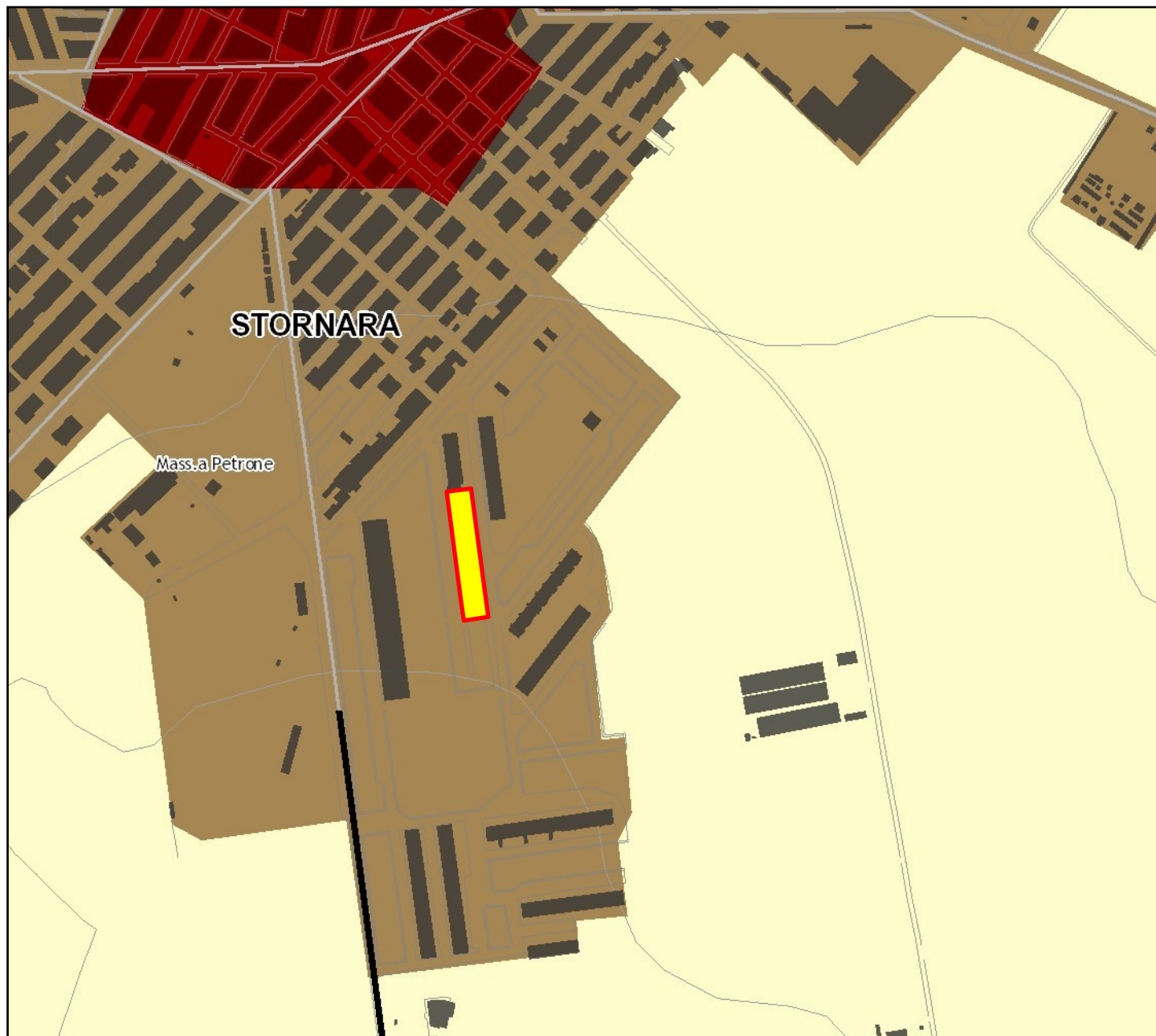


150m

1:5.000



Tavola C - Assetto territoriale



150m

1:5.000