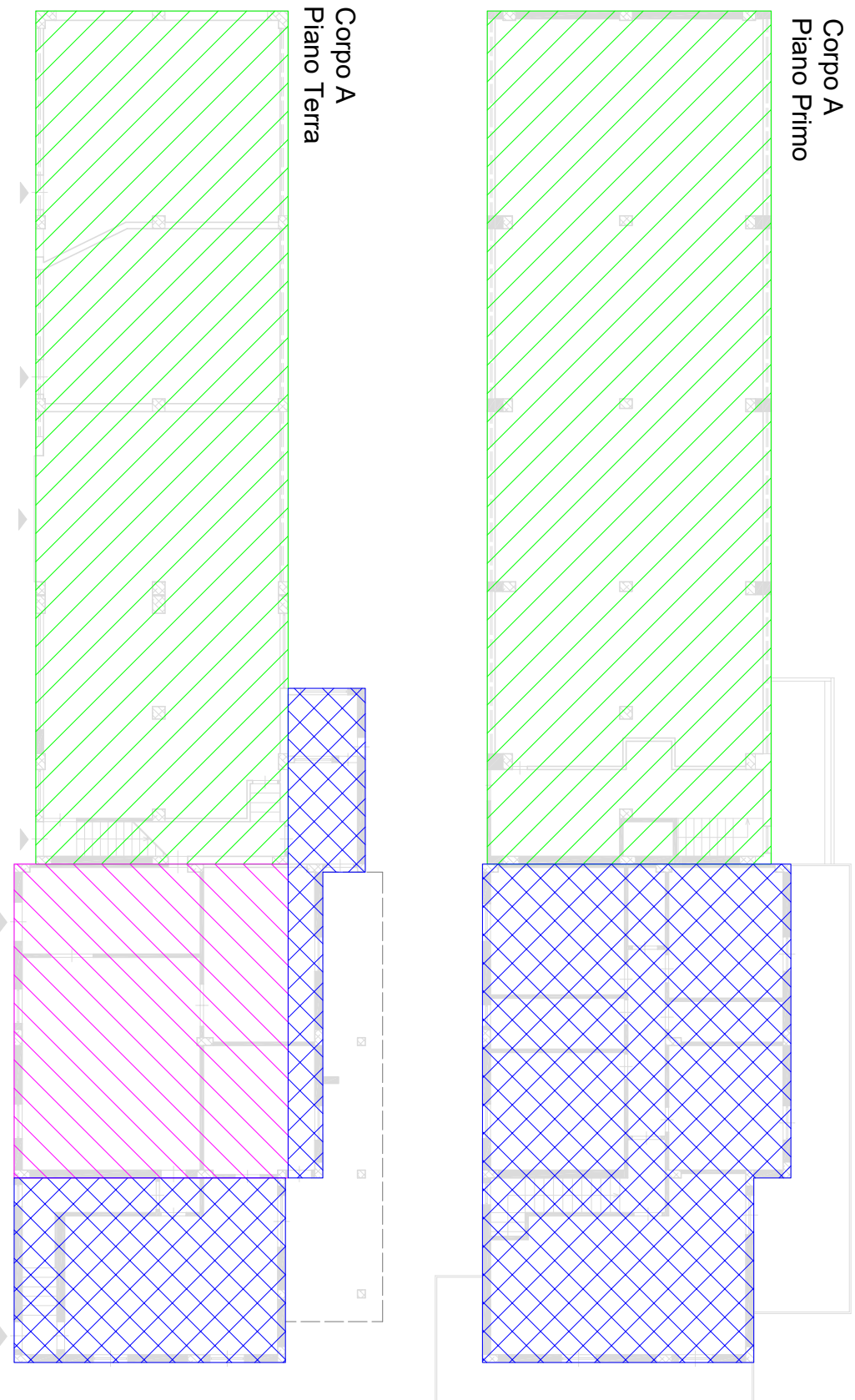

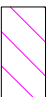
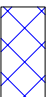


TRIBUNALE DI TERMINI IMERESE
Sezione Civile - Esecuzioni Immobiliari
Giudice Dott. Daniele Gallucci
R.Es. n. 2/2015 - Promosso da Unicredit s.p.a. contro Soggetto A + 1
C.T.U. Arch. Sabrina Zora



LEGENDA

-  Corpo A1
-  Corpo A2
-  Corpo A3