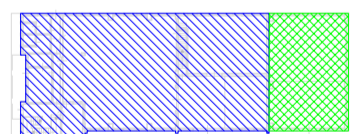
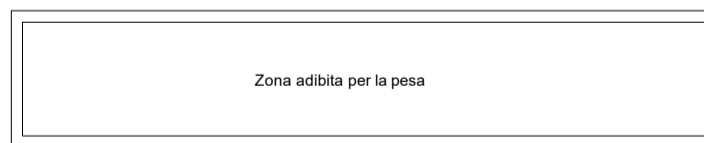
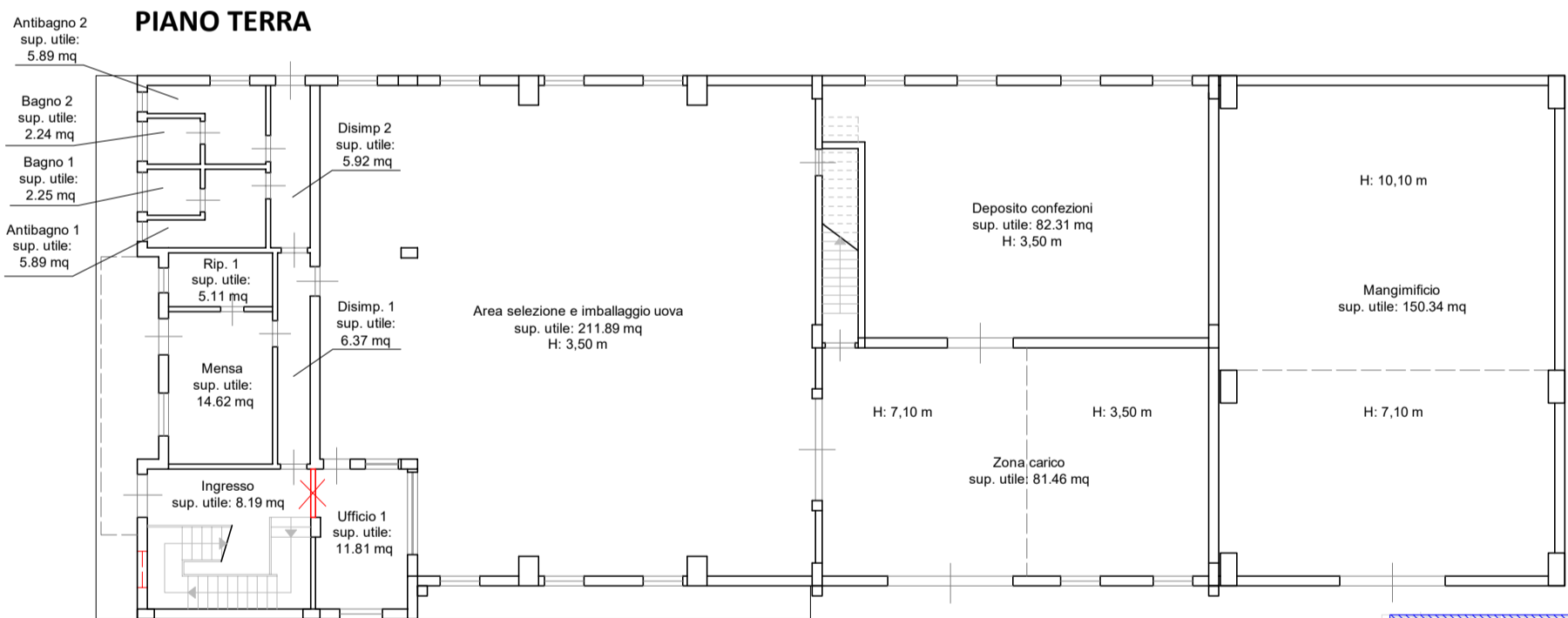
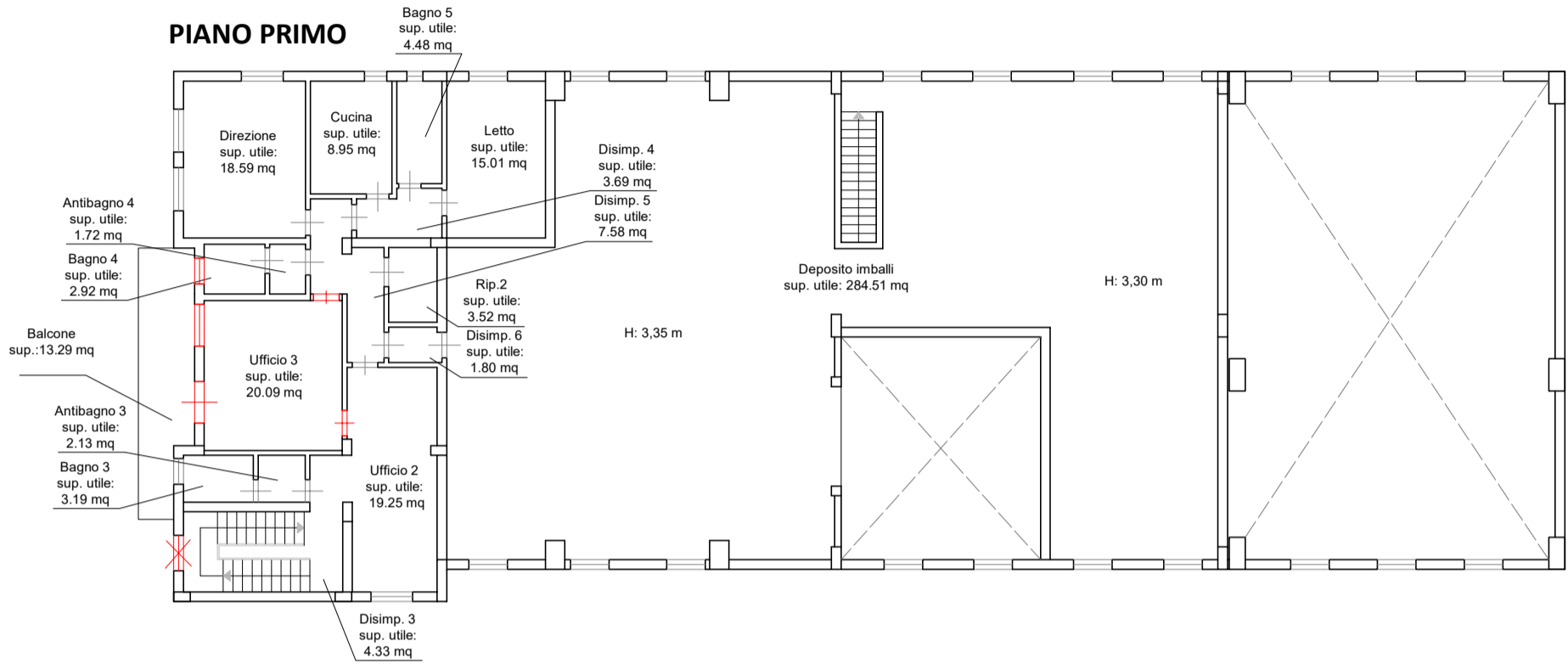


TRIBUNALE DI TERMINI IMERESE
Sezione Civile - Esecuzioni Immobiliari
Giudice Dott. Daniele Gallucci
R.Es. n. 2/2015 - Promosso da Unicredit s.p.a. contro Soggetto A + 1
C.T.U. Arch. Sabrina Zora



LEGENDA

Corpo B

Corpo B1



Corpo B-B1 Foglio n. 6 P.IIa 288

	Superficie Utile Netta	Superficie Commerciale
Piano Terra	594,29 mq	676,79 mq
Piano Primo	401,76 mq	471,78 mq
TOTALE	996,05 mq	1.148,57 mq