

all. 9

**Fotografie esterne ed interne del bene,
nonché la relativa planimetria**



Foto aerea - ubicazione dell'immobile



Foto esterne



foto facciata da via
Niccolini



Foto da cortile interno





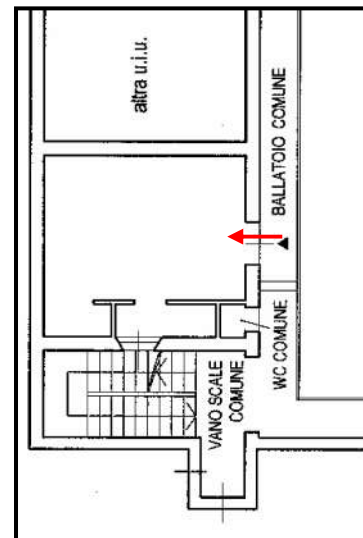
Foto da cortile interno



Foto da ballatoio condominiale

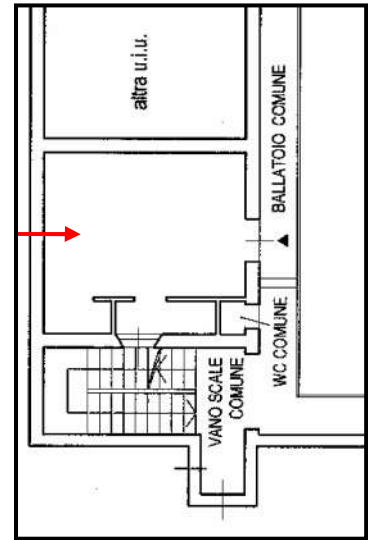
Facciata immobile
oggetto di perizia

Foto interne

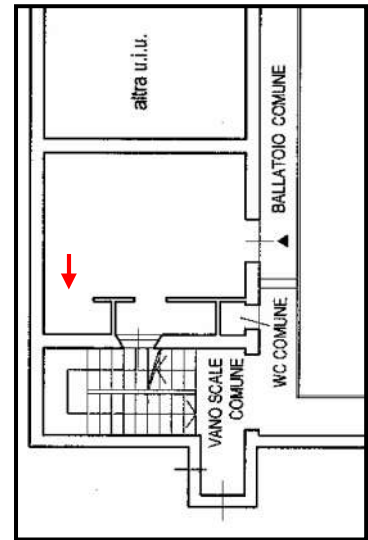


Locale multiuso

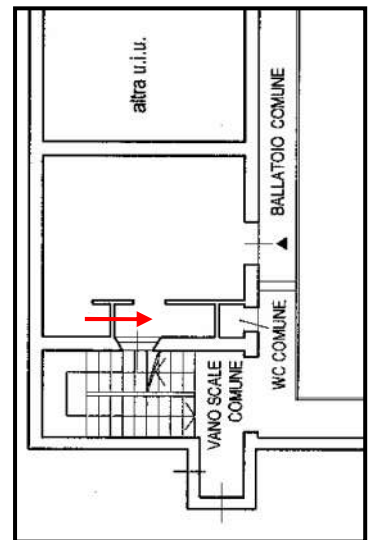
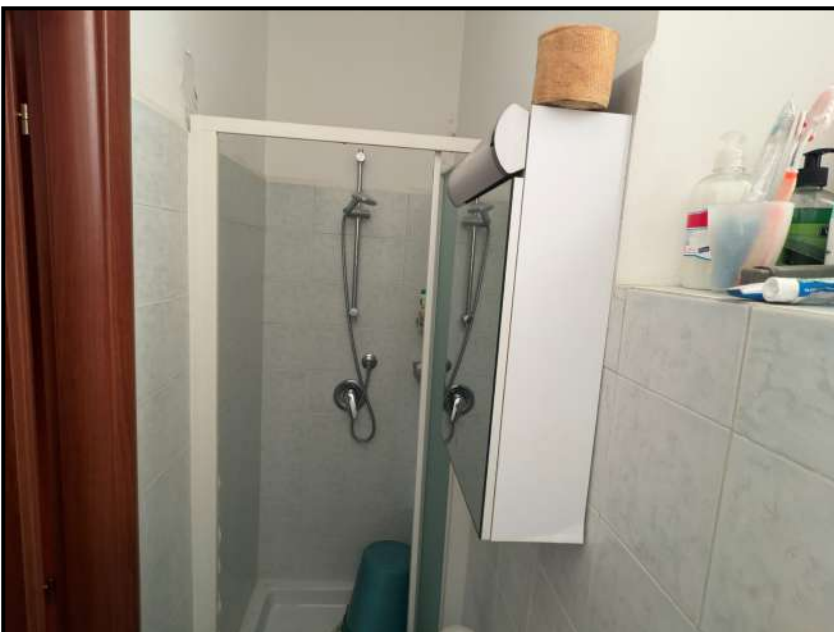




Locale multiuso

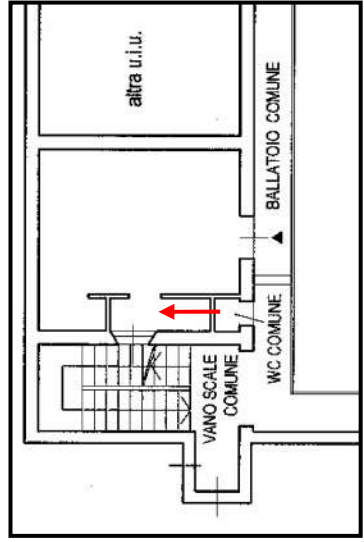


Angolo cottura



Bagno





Bagno

