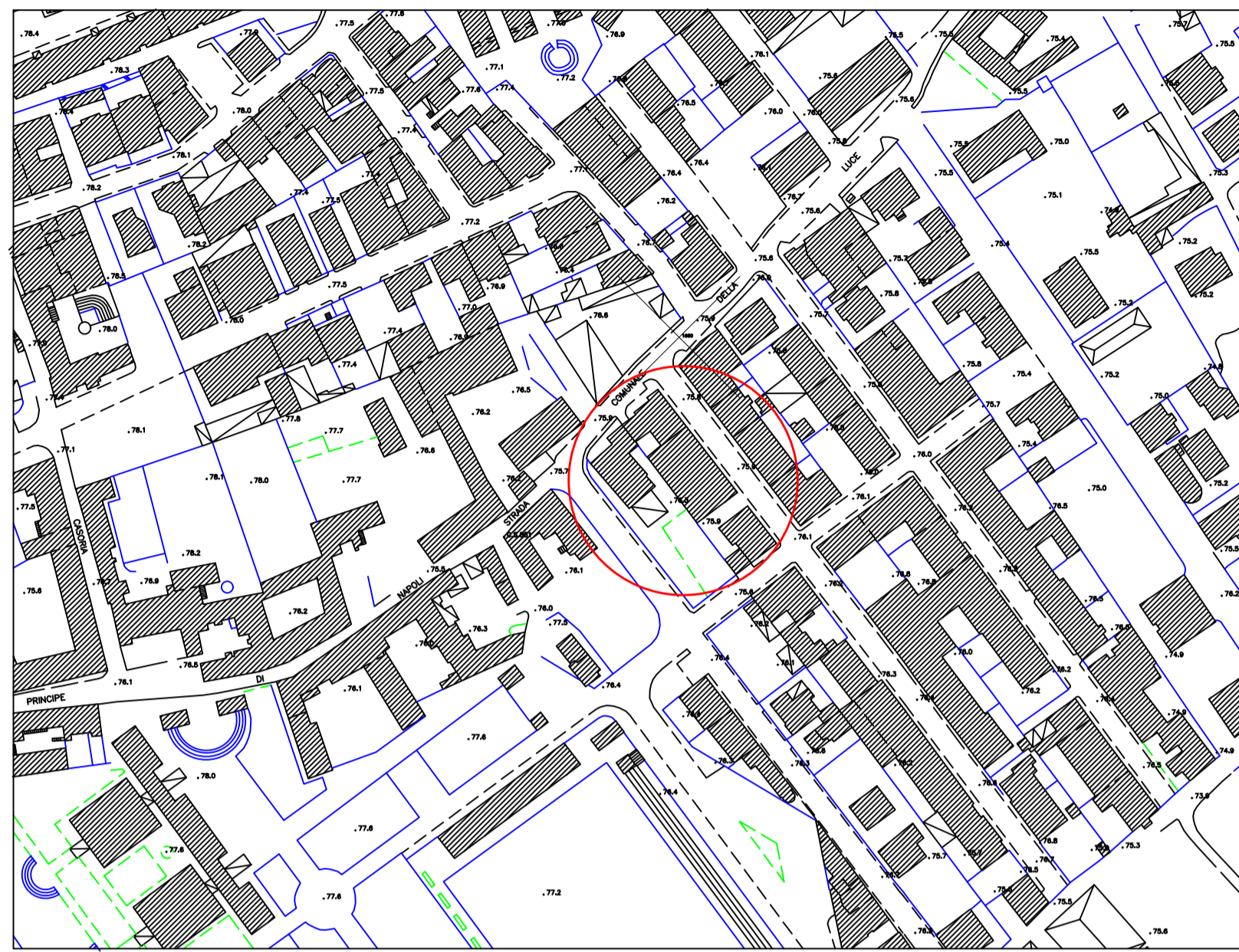
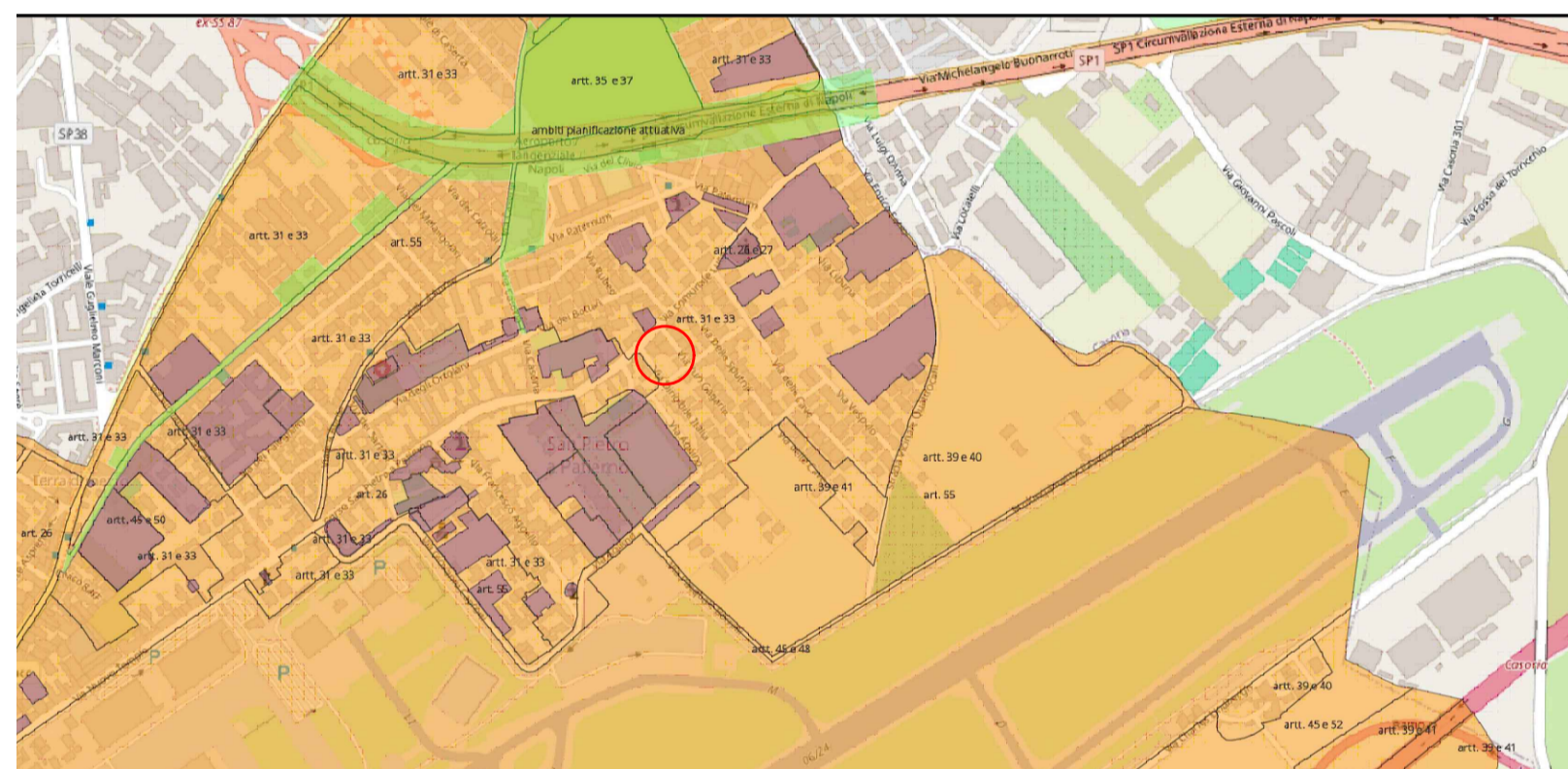


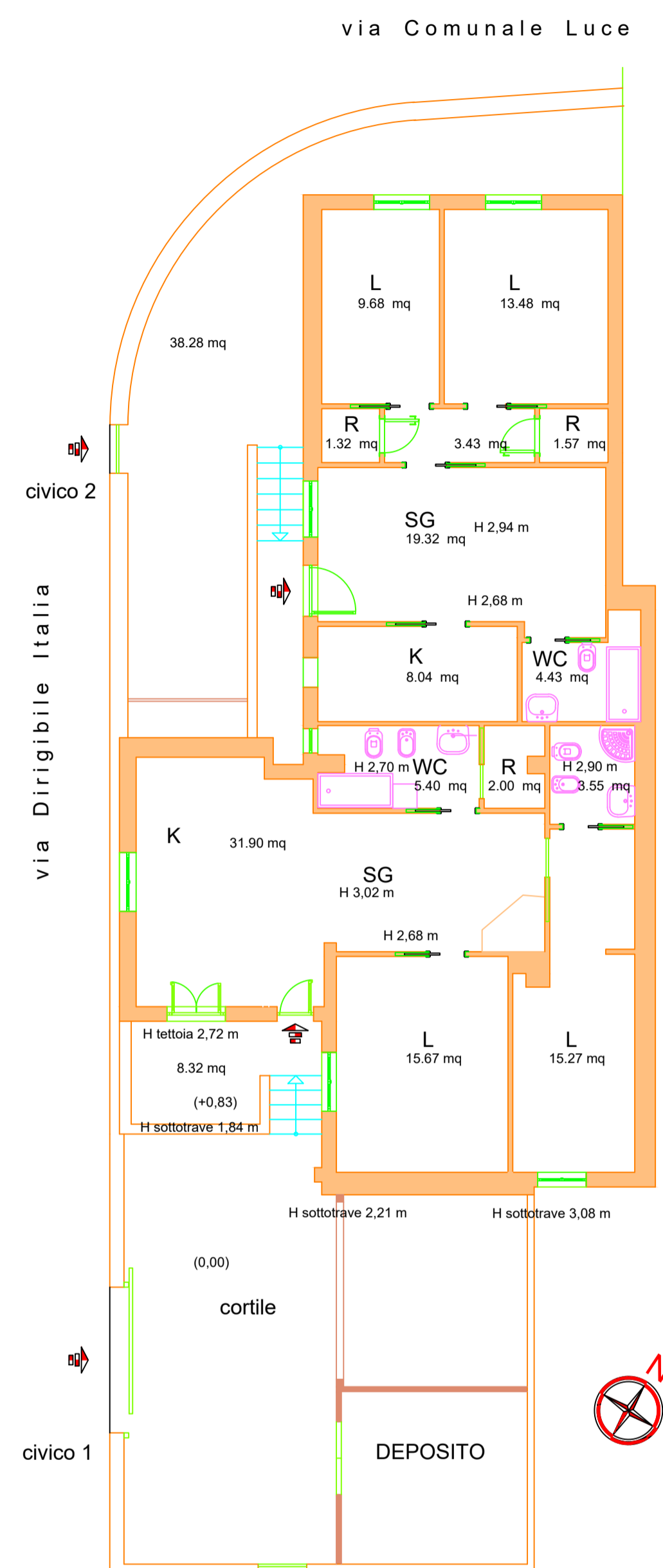
Stralcio aerofotogrammetrico scala 1:1000



Stralcio P.R.G. scala 1:5000



PIANTA - STATO ATTUALE



Viste aeree da google map



**LEGENDA**

SUPERFICIE UTILE civico 1	= 73,79 MQ
SUPERFICIE CORTILE	= 38,26 MQ
SUPERFICIE TERRAZZINO A QUOTA +0,83	= 8,32 MQ
SUPERFICIE DEPOSITI	= 28,53 MQ
SUPERFICIE LORDA	= 90,43 MQ
SUPERFICIE UTILE civico 2	= 61,27 MQ
SUPERFICIE AREE ESTERNE	= 38,28 MQ
SUPERFICIE LORDA	= 73,09 MQ
SUPERFICIE COMMERCIALE civico 1	= 110,59 MQ
SUPERFICIE COMMERCIALE civico 2	= 76,91 MQ

