



Foto da 1 a 8, corte di accesso al fabbricato comprendente il lotto in oggetto su Via Mentana n. 10



Foto da 9 a 16, prospetto prospiciente sulla corte di accesso del fabbricato comprendente il lotto in oggetto



Foto 17,18 - ingresso autonomo al lotto

Foto dan19 a 29 \_ vano scala di comunicazione interna al lotto in oggetto, collegante i piani di sviluppo dello stesso (piano terra e piano primo)

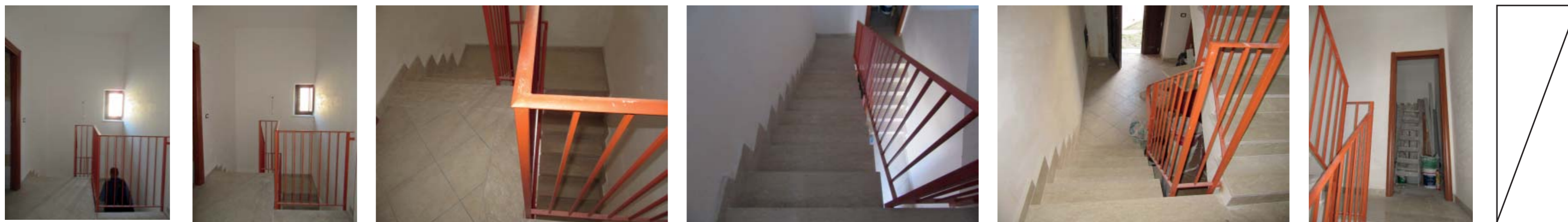


Foto 30, ingresso vano A2

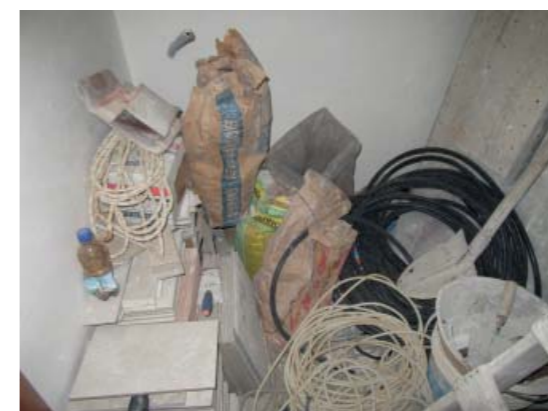


Foto da 31 a 37, ingresso vano A2

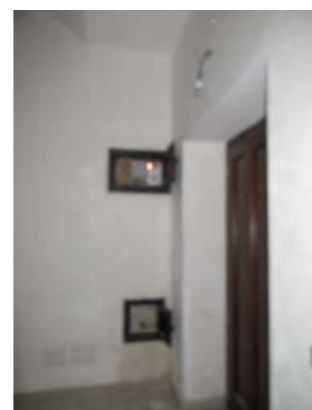
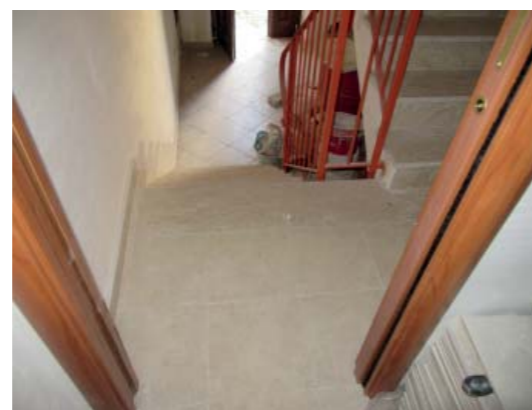


Foto da 38 a 40, ingresso/vano scala A1, nicchie contatori

Foto da 41 a 48, vano A4

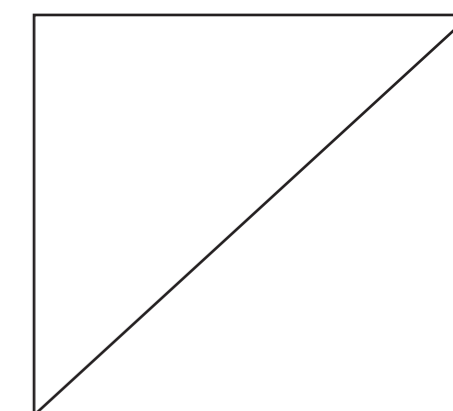
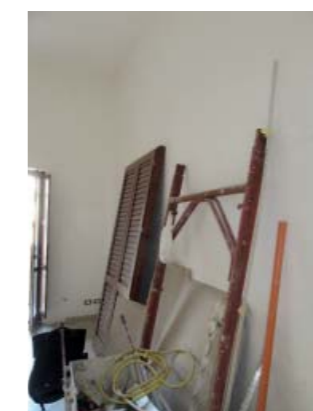
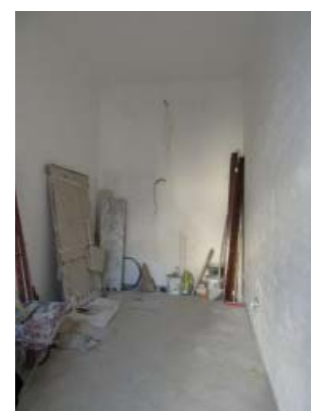


Foto da 49,50, balcone A5

Foto da 52 a 56, viste dal balcone A5 dal vano A4 della corte di accesso dalla via pubblica

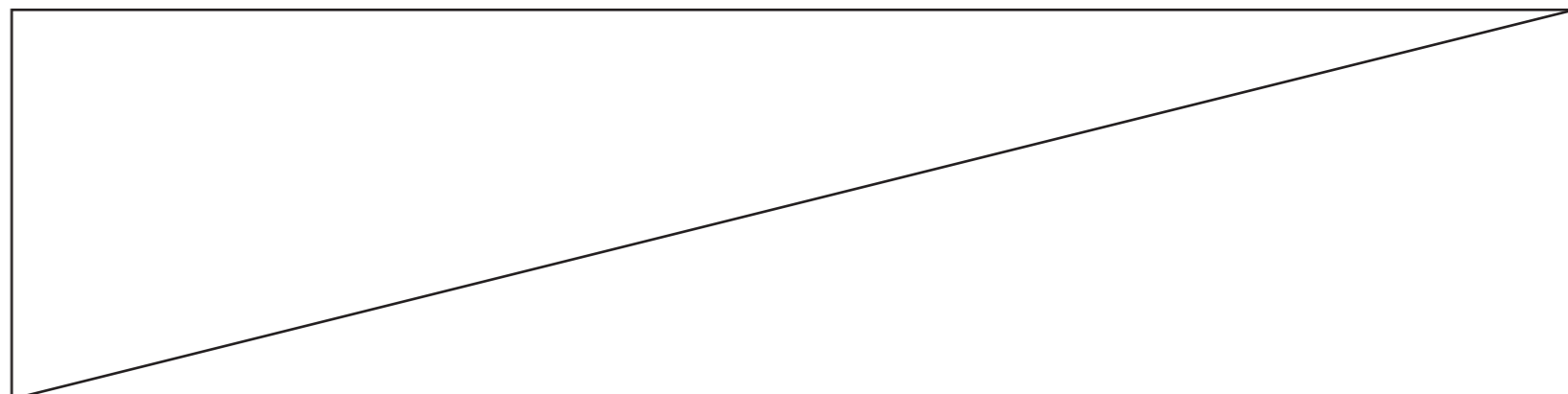


Foto da 57 a 60, viste dal balcone del vano A4

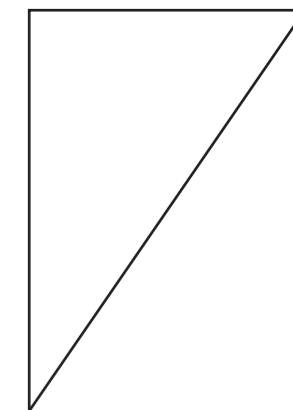


Foto da 61 a 63, disimpegno A6 e corridoio A7

Foto da 64 a 72, vano A8

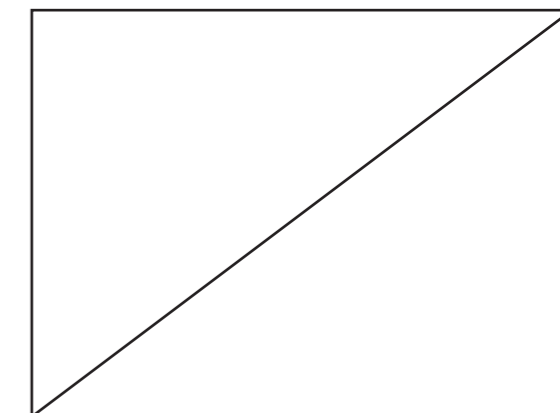
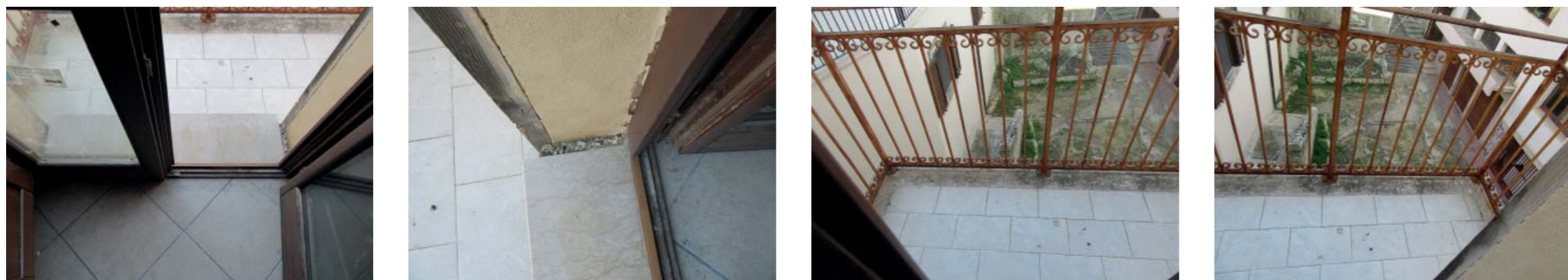
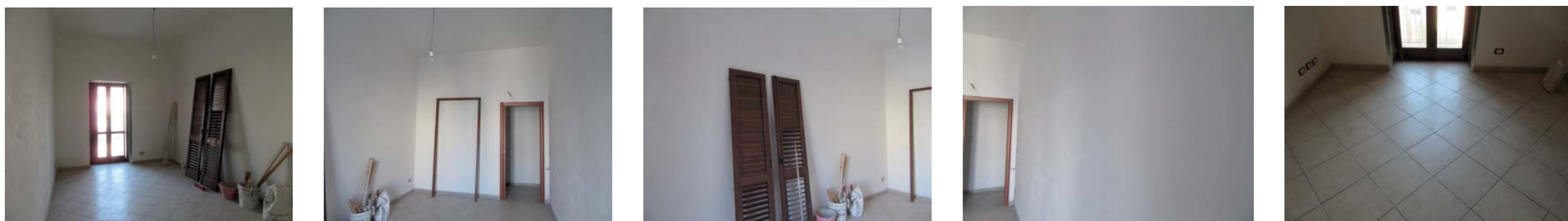


Foto da 73 a 75, balcone A9 prospiciente su corte

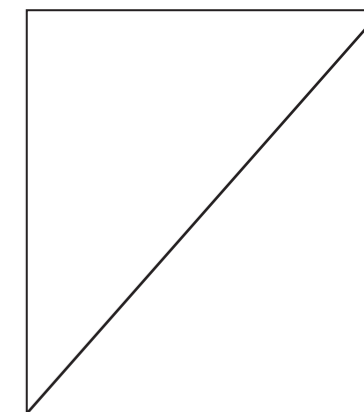


Foto da 77 a 79, viste dal balcone A9 - vano A8

Foto 80, corridoio A7

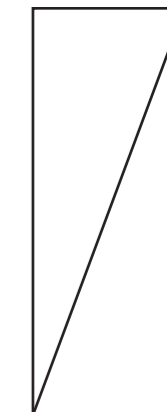


Foto 81 a 87\_ vano A10

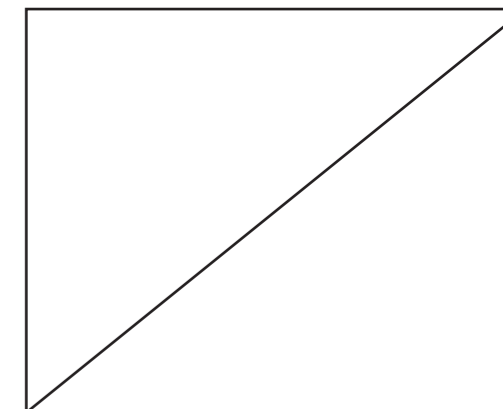


Foto da 88, a 96\_ vano A10

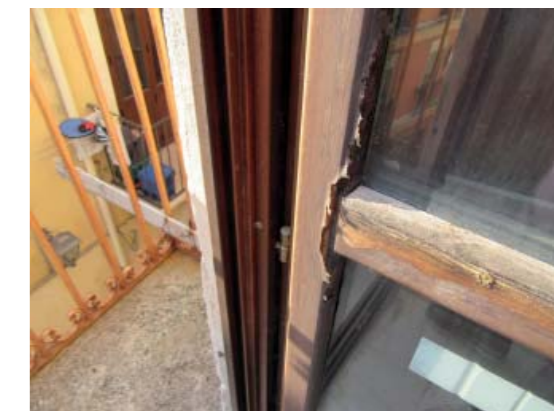
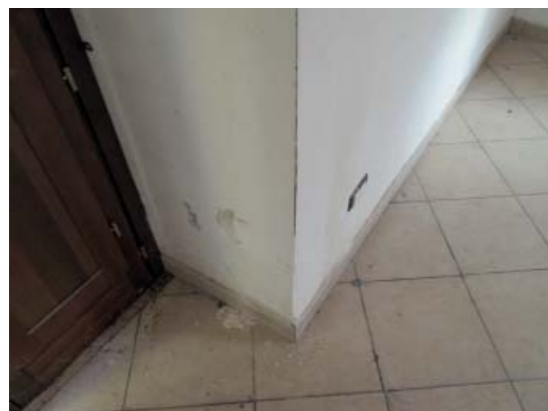


Foto 97,98,99\_ balcone 11 prospiciente su Via Bellini

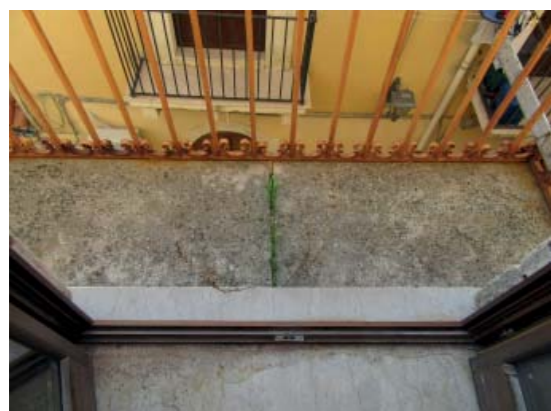


Foto da 100 a 102\_ balcone 11 prospiciente su Via Bellini e viste

Foto da 103 a 106 Via Bellini

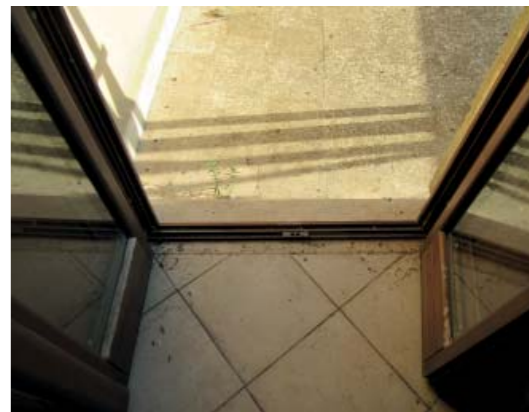


Foto da google 1 e 2\_ Via Bellini

Foto 107,108\_vano A8 verso terrazzo A12

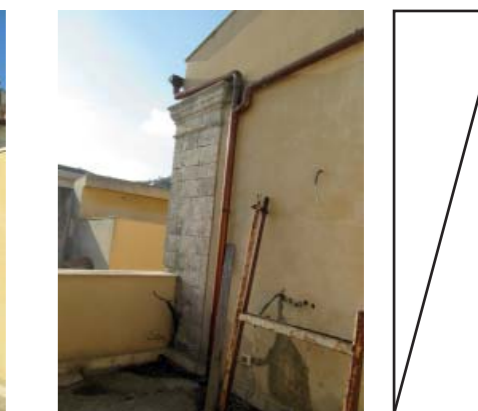


Foto da 109 a 117\_terrazzo A12

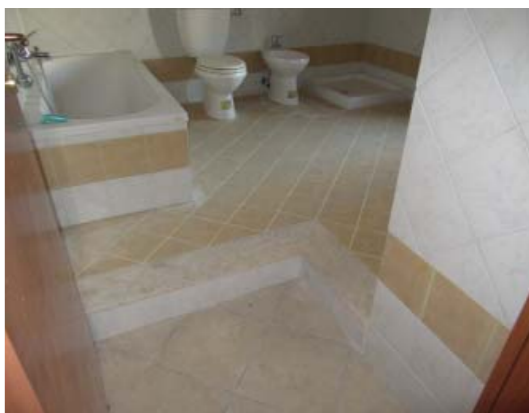


Foto 118\_disimpegnoA6 - Foto 119,120\_servizio igienico A9



Foto da 121 a 131\_vano A9

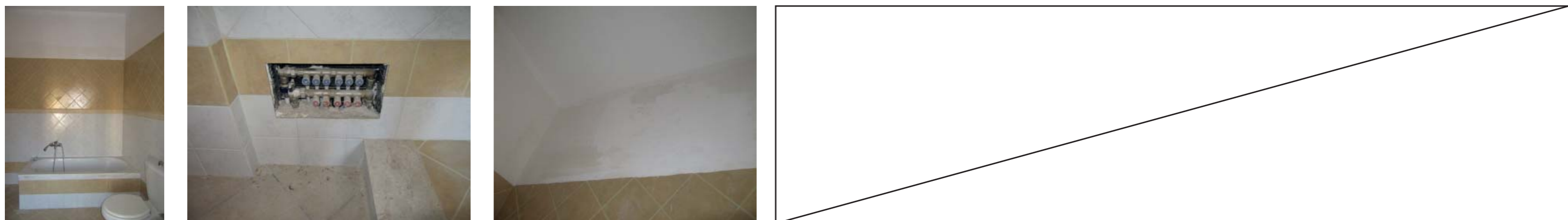


Foto da 132 a 134, nicchie impianti vano disimpegno A6

