

DOCUMENTAZIONE FOTOGRAFICA



Inquadramento territoriale isolato 273 via Tommaso Cannizzaro n.58



Inquadramento dell'isolato 273 da via Garibaldi



Terrazzo esclusivo appartamento

Lotto3

Lotto2



Portone di Ingresso al fabbricato da via Tommaso Cannizzaro

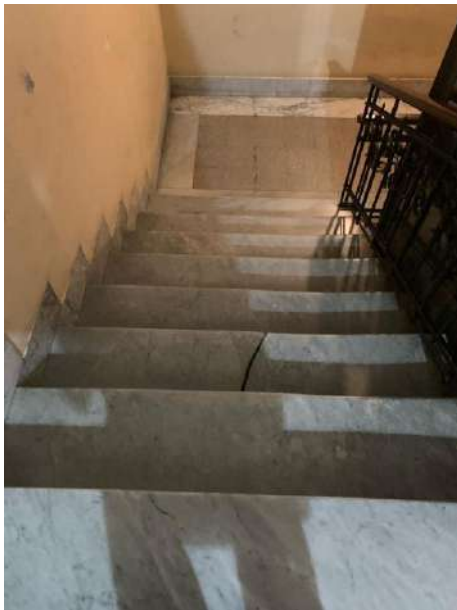


Balconi appartamento

Balcone su viale San Martino



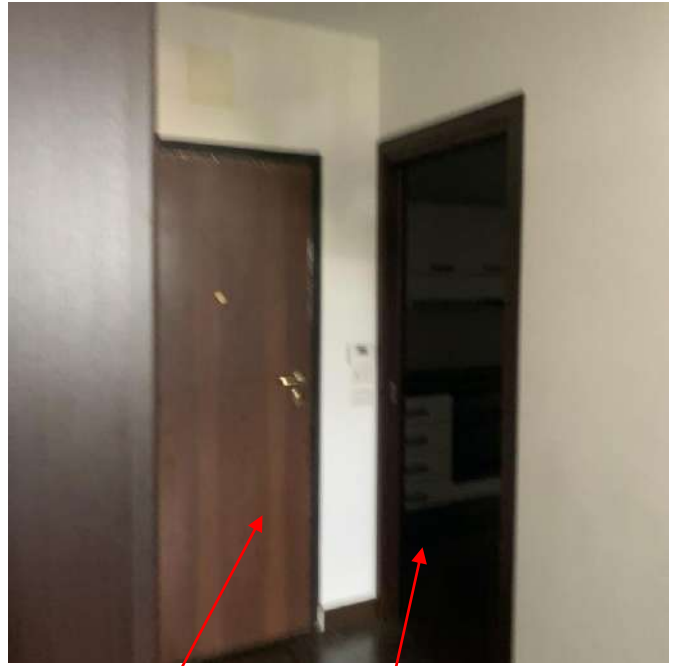
Portone condominiale vista interna scala e ascensore



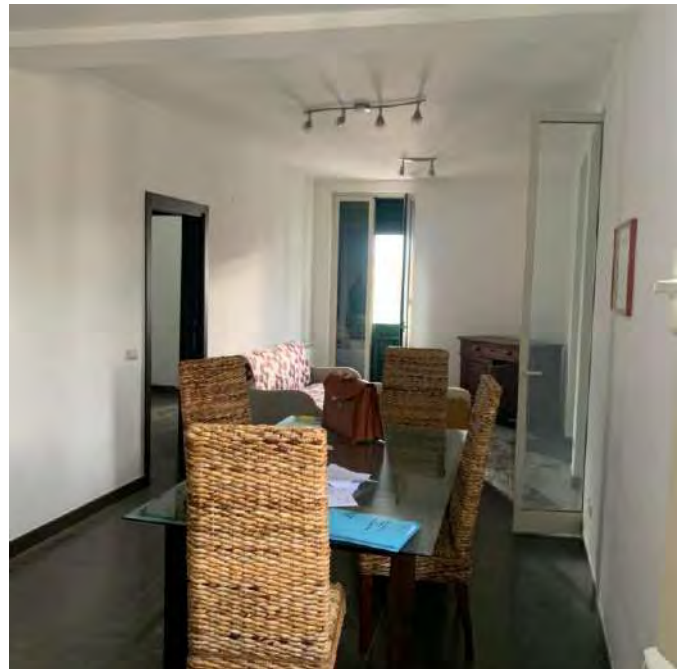
Condizioni scala condominiale



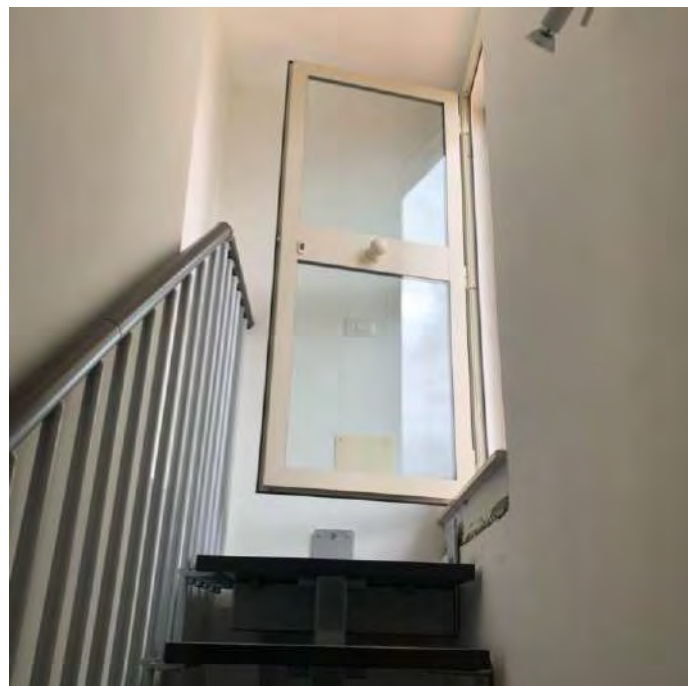
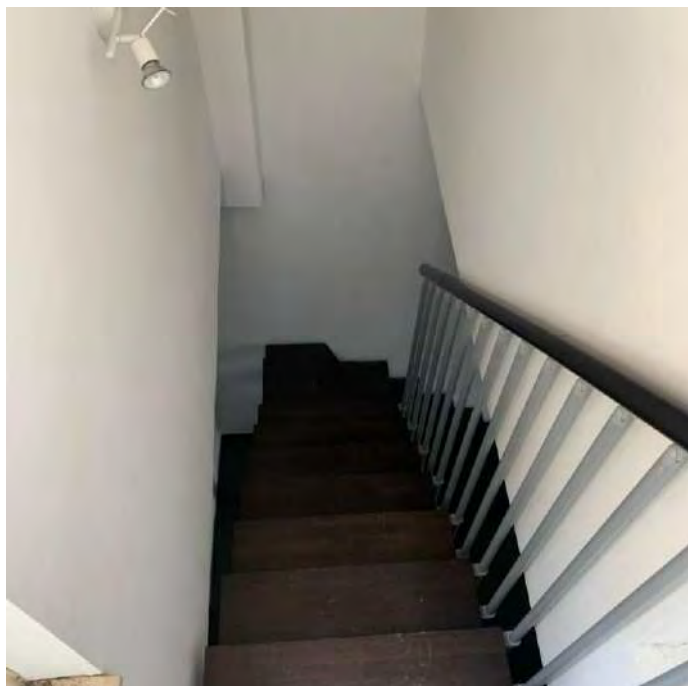
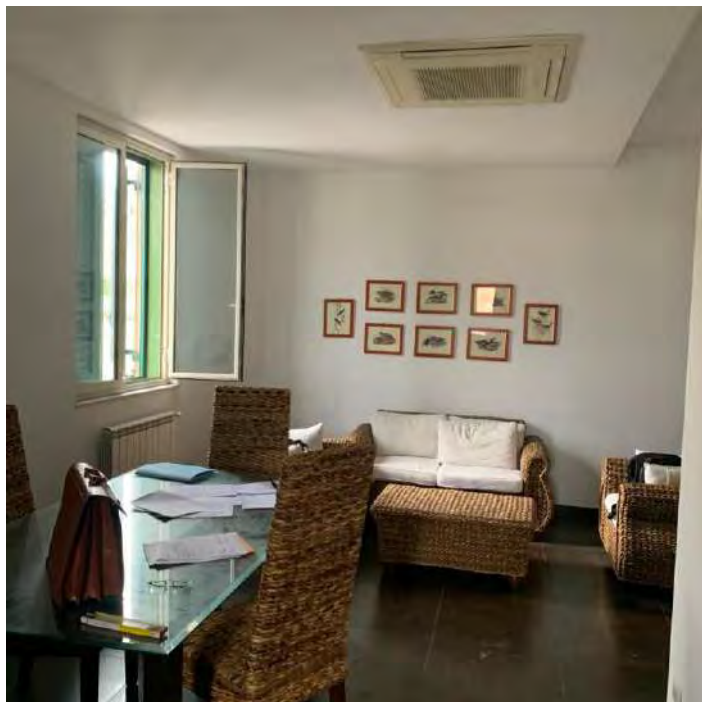
Porta Ingresso appartamento – Scala interna non autorizzata



Porta ingresso – Vano Cucina Cieco



Soggiorno



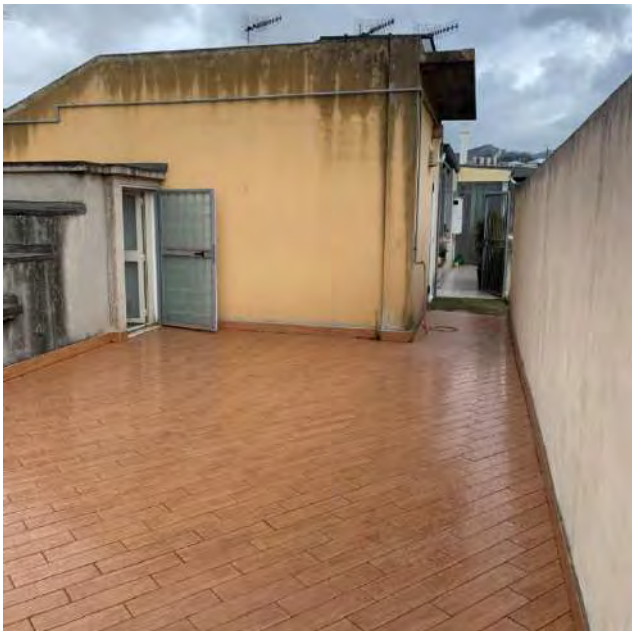
Vista dall'alto della scala interna



Preso aria dal bagno su scala interna



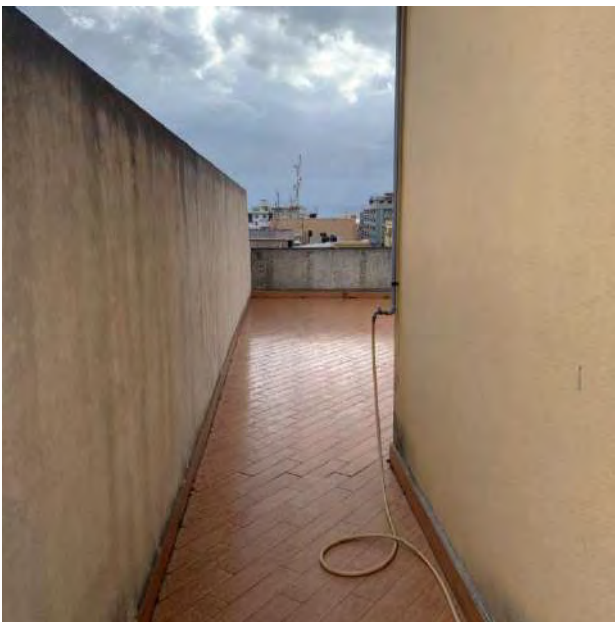
Uscita su terrazzo



Terrazzo uso esclusivo



Terrazzo uso esclusivo



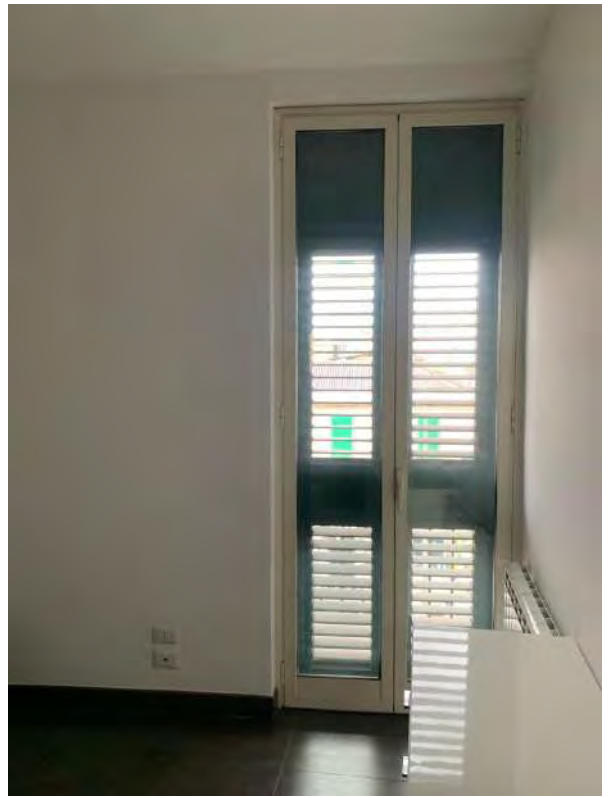
Uscita condominiale su lastrico solare sub 40 e altre proprietà



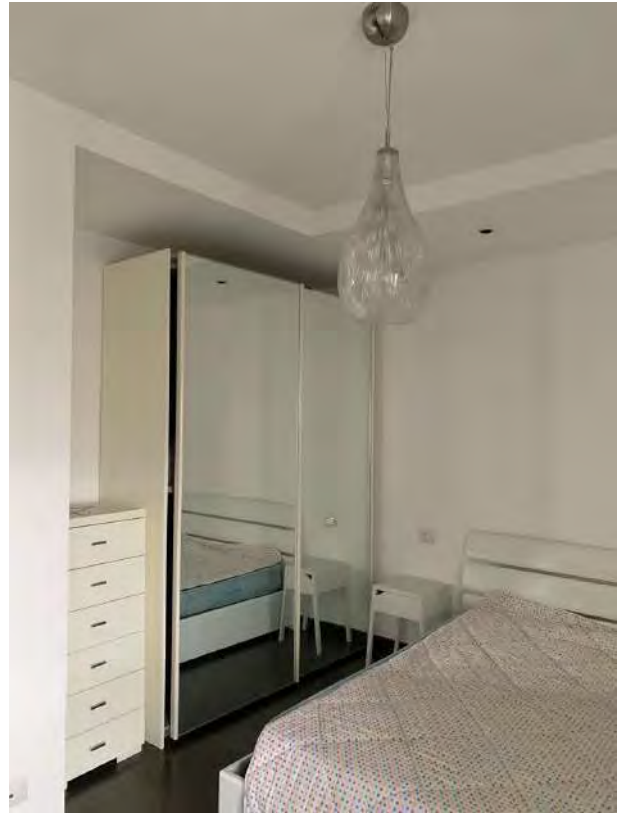
Balcone su via Tommaso Cannizzaro



Particolare infisso esterno con persiana e pavimentazione soggiorno

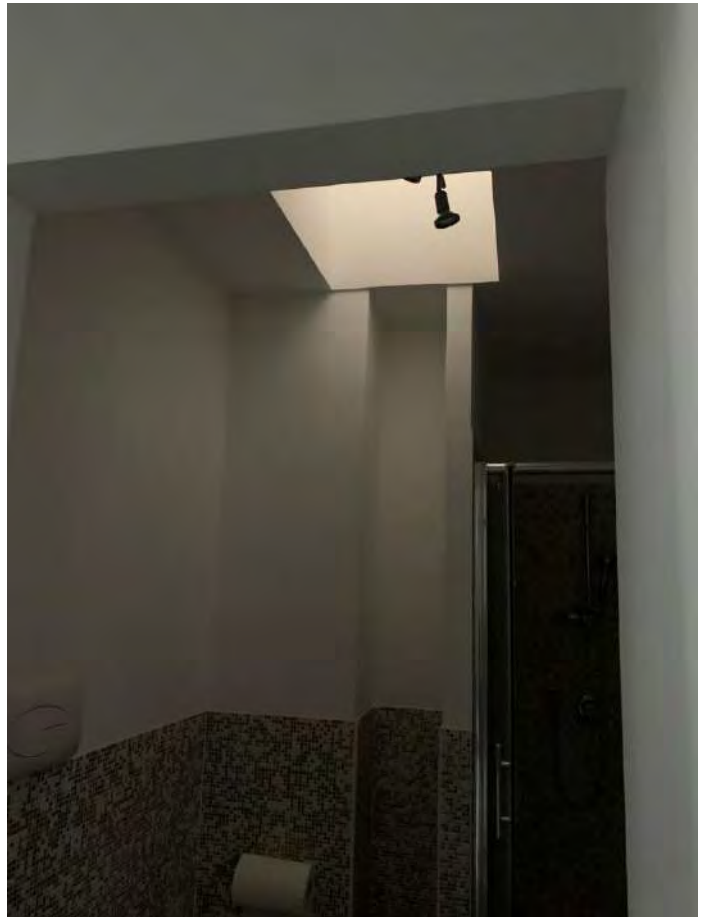


Vano Letto





Bagno

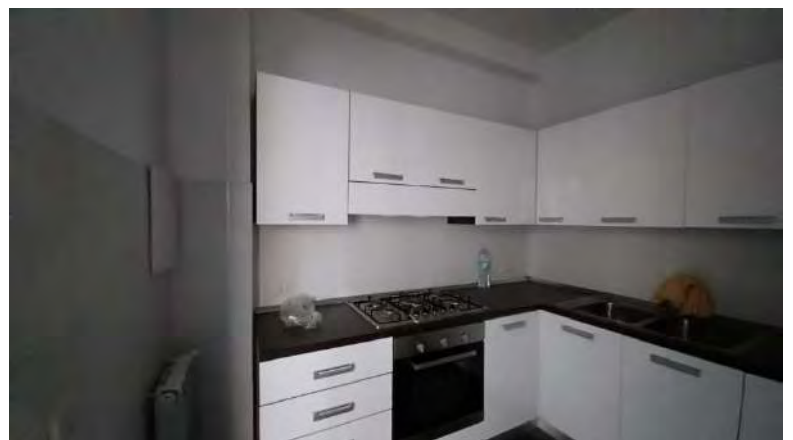




Ventilazione



Scaldasalviette



Vano cieco Cucina



Terrazzo uso esclusivo – caldaia – motori split



Termostato