

DOCUMENTAZIONE FOTOGRAFICA

IMMOBILI SITI IN PIETRAPERZIA (EN)

APPARTAMENTO VIA G. BARRILE n. 3 – Piano 2° --- FG. 55 PART. 486 SUB. 4

GRAGE VIA G. BARRILE n. 1 – Piano T° --- FG. 55 PART. 486 SUB. 2

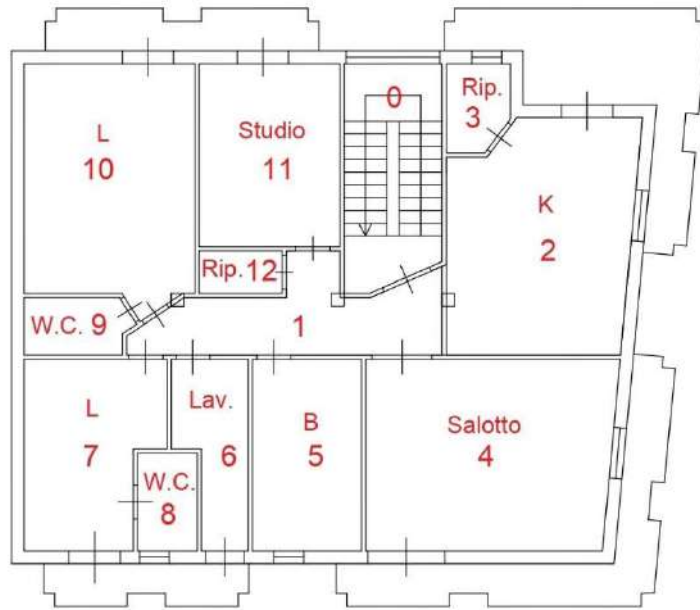


FOTO 1 --- PROSPETTI NORD E OVEST



FOTO 2 --- PROSPETTI OVEST E SUD

APPARTAMENTO VIA G. BARRILE n. 3 – Piano 2° --- FG. 55 PART. 486 SUB. 4



VIA G. BARRILE



FOTO 3 - 4 --- VANO 0 INGRESSO CONDOMINIALE



FOTO 5 - 6 --- VANO 1



FOTO 7 --- VANO 2



FOTO 8 --- VANO 2



FOTO 9 --- VANO 3



FOTO 10 - 11 --- VANO 4





FOTO 12 --- VANO 5



FOTO 13 --- VANO 6



FOTO 14 --- VANO 7



FOTO 15 --- VANO 8



FOTO 16 --- VANO 8



FOTO 17 --- VANO 9



FOTO 18 --- VANO 10

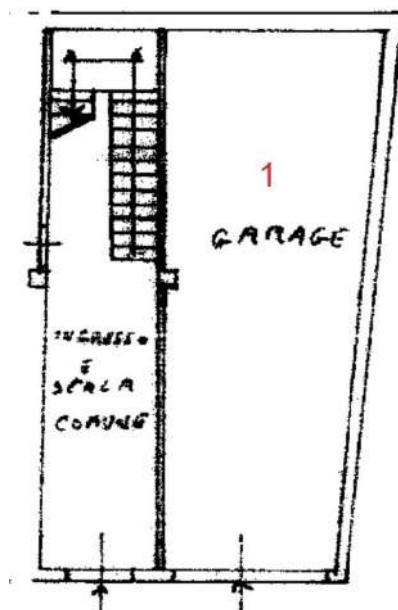


FOTO 19 --- VANO 11



FOTO 20 --- VANO 12

GRAGE VIA G. BARRILE n. 1 – Piano T° --- FG. 55 PART. 486 SUB. 2



VIA G. BARRILE



FOTO 1 --- VANO 1

ATTIVITA' COMMERCIALE VIA LA MASA n. 8 – 10 – 12 – Piano T

FG. 31 PART. 1215 SUB. 3; FG. 31 PART. 3622 SUB. 1; FG. 31 PART. 1215 SUB. 7, PART. 3622 SUB. 5



FOTO 1 – 2 --- PROSPETTI SU VIA LA MASA



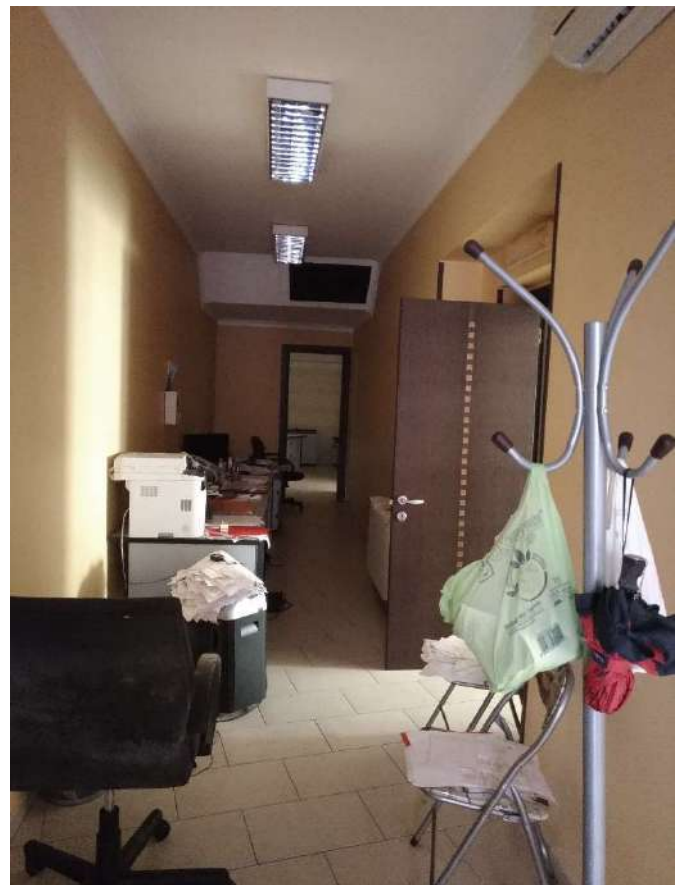
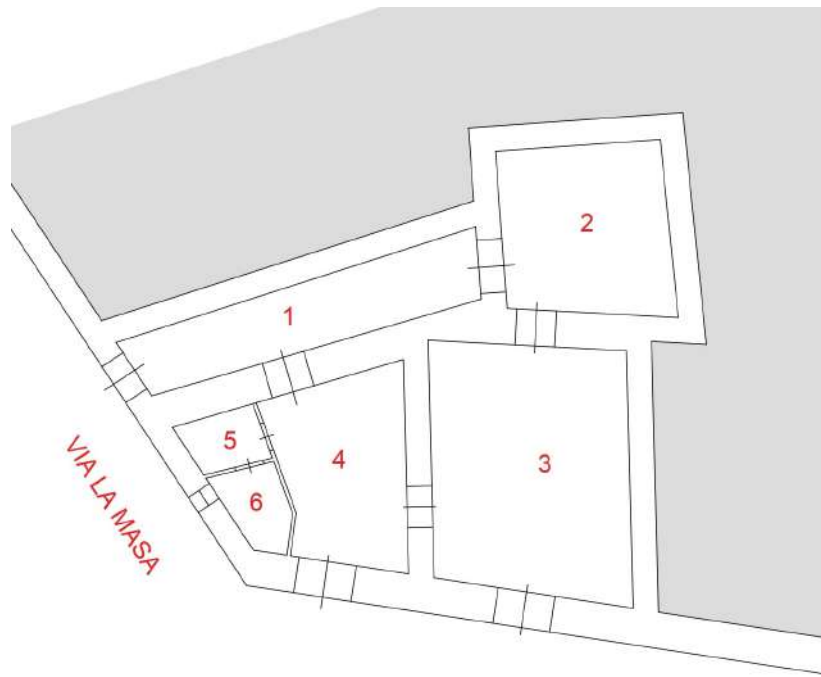


FOTO 3 - 4 --- VANO 1

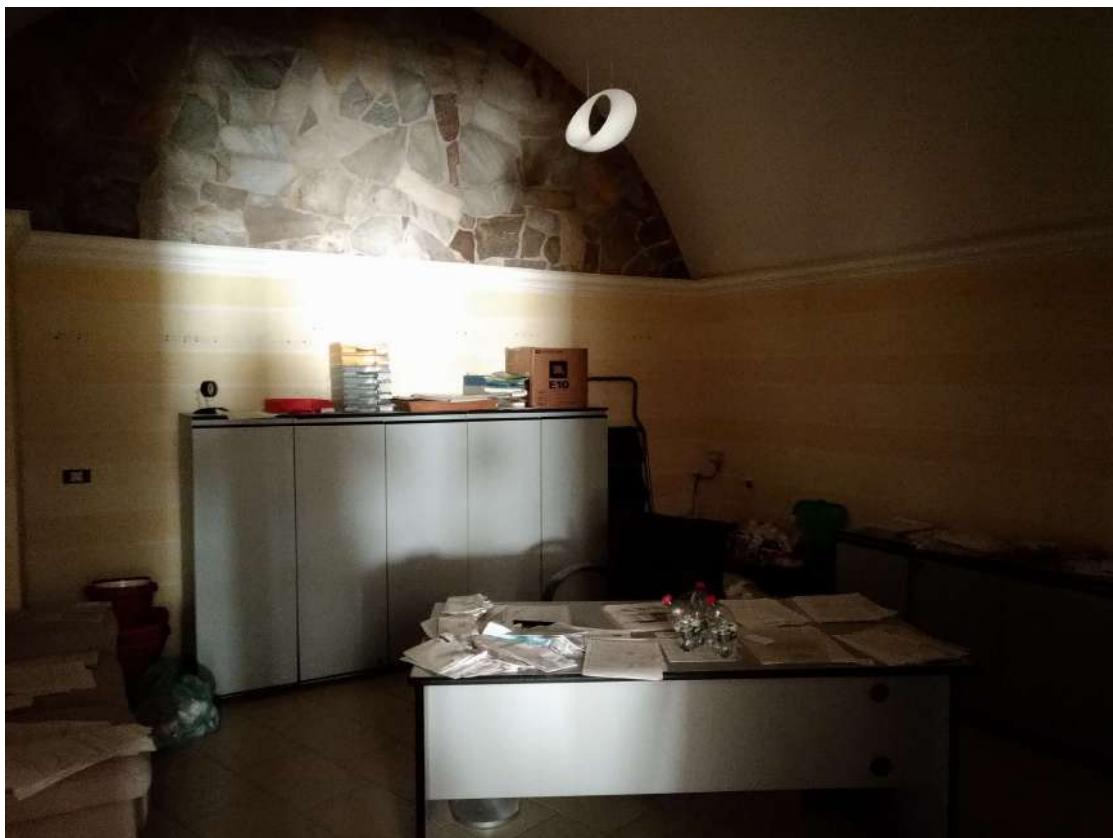


FOTO 5 --- VANO 2



FOTO 6 --- VANO 3



FOTO 7 - 8 --- VANO 3



FOTO 9 – 10 --- VANO 4





FOTO 11 --- VANO 5



FOTO 12 --- VANO 6