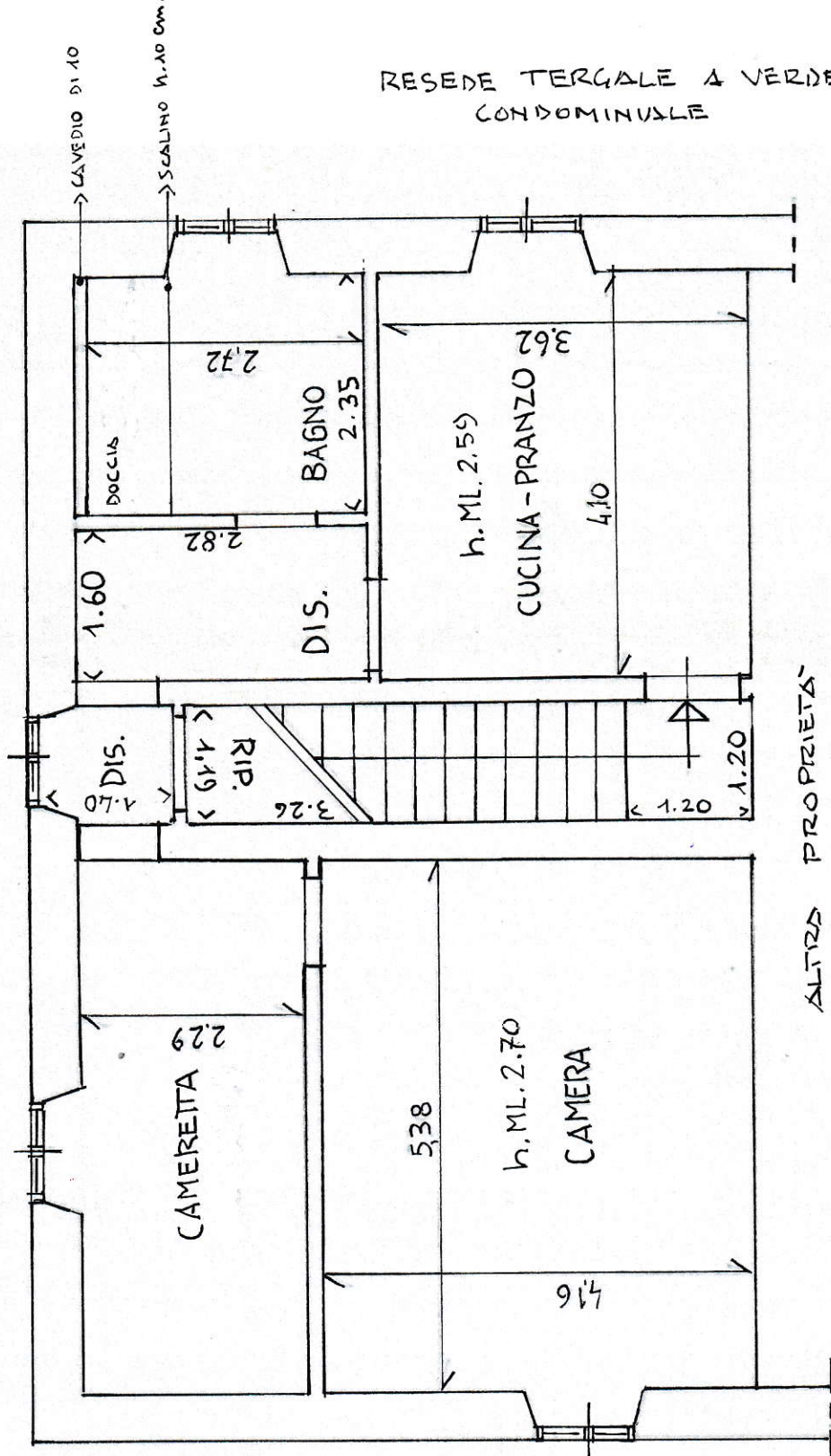
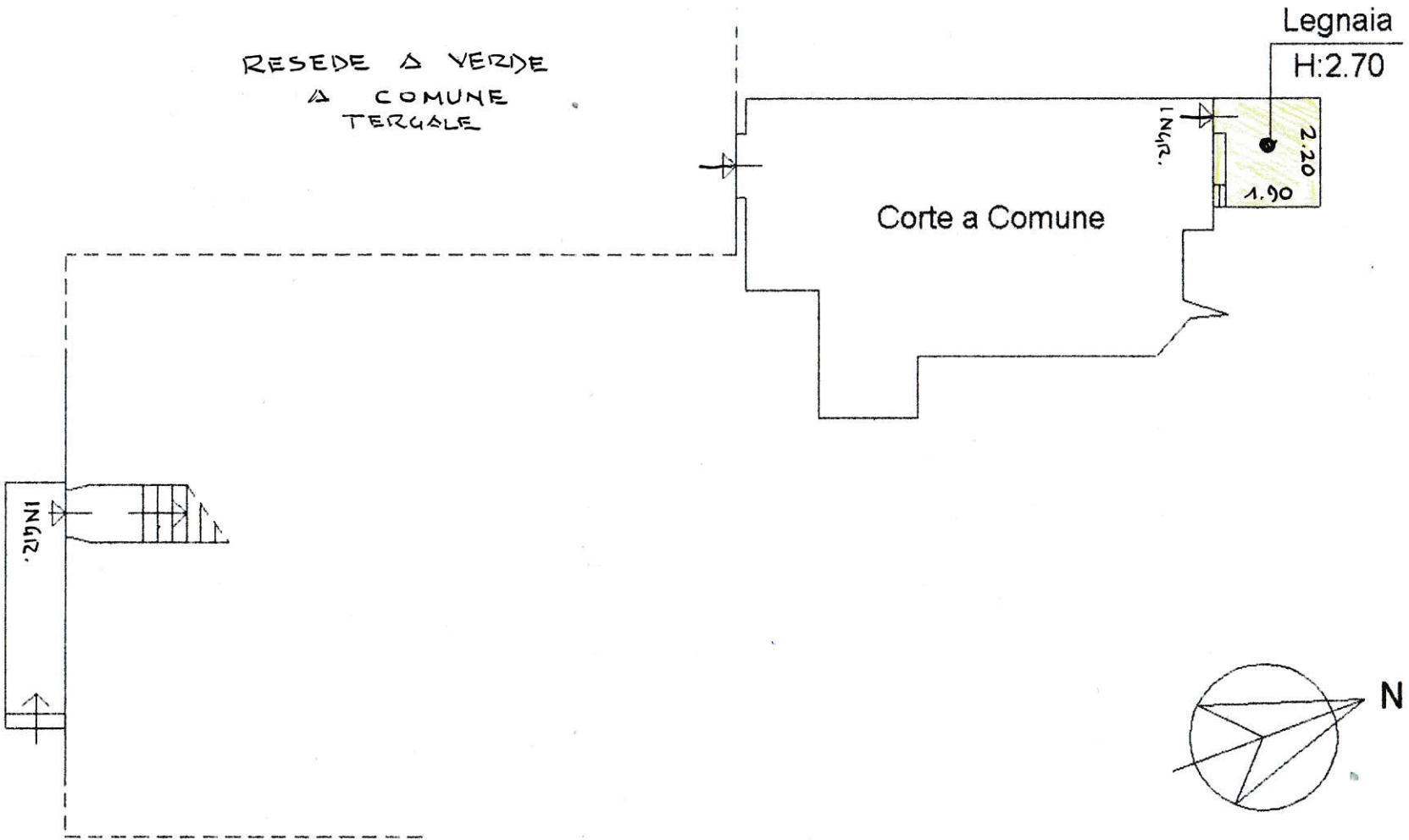


RESEDE TERGALE A VERDE
CONDOMINIALE

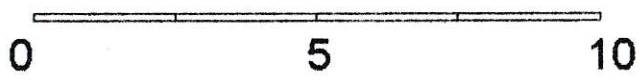


PIANO 2° (RILIEVO) - F.S. -

VIA FORLIVese (S.S. 67)

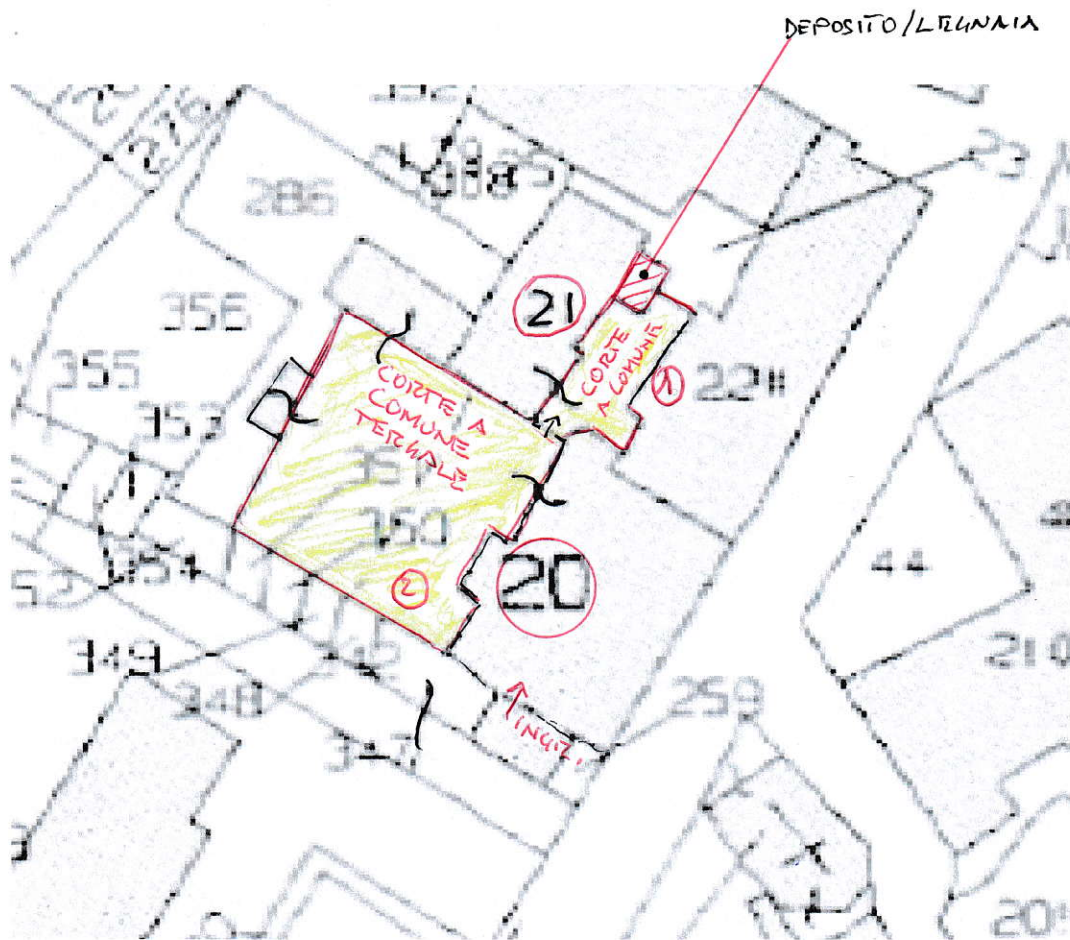


PIANO TERRENO



F.S.

Ctu Arch. Fabio Braccianti - Studio in Lungarno B. Buozzi,6/8 - 50055 Lastra a Signa (Fi).
 R.G.E. n. 256/2023 - Perizia di stima



INDIVIDUAZIONE
CORTI A COMUNE
TERGALI :

- 1 - F. 3 - PART. 21 - MQ. 12 c.a
- 2 - F. 3 - PART. 20 - MQ. 225 c.a