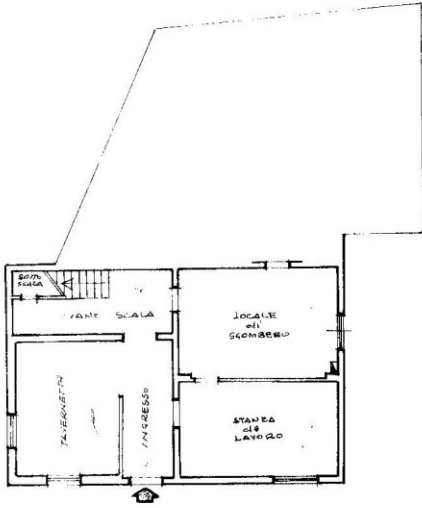
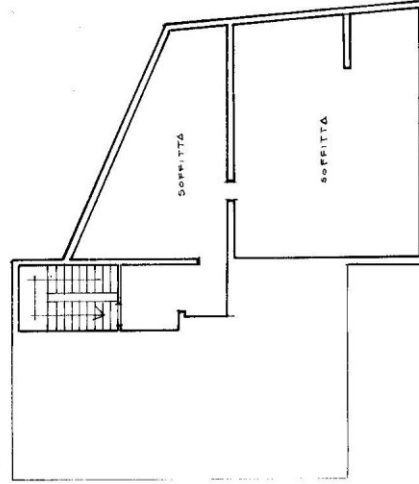


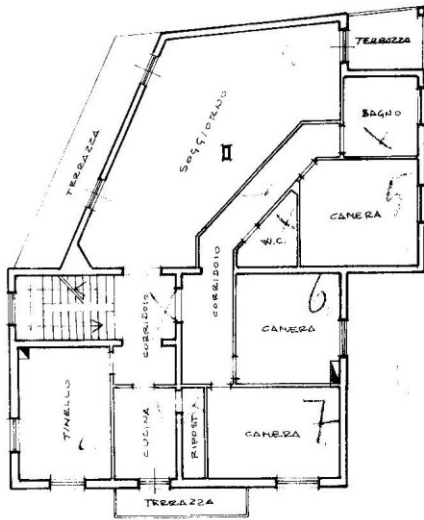
PIANTA PIANO TERRENO
H= m. 2,85



PIANTA PIANO SECONDO
H/media = m. 1,80

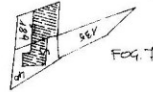


PIANTA PIANO PRIMO
H= m. 2,85



PLANIMETRIA
1/3000

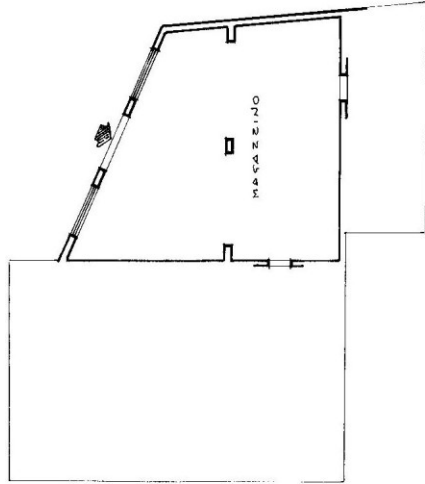
ORIENTAMENTO



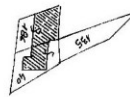
FOG. 7

SCALA DI 1.200

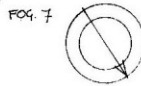
PIANTA PIANO TERRENO
H= m. 3,20



PLANIMETRIA
1/5000

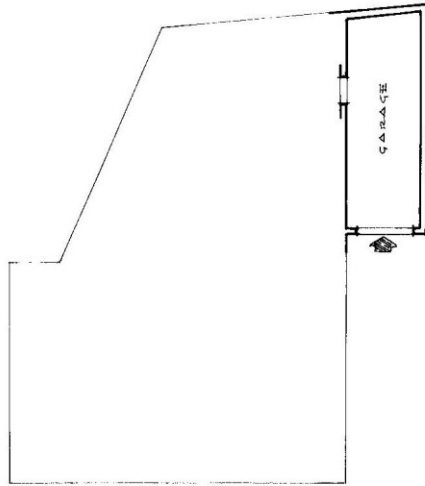


ORIENTAMENTO

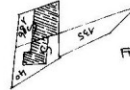


SCALA DI 1.200

PIANTA PIANO TERRENO
H= m. 2,95



PLANIMETRIA
1/2000



ORIENTAMENTO

Foglio 7



SCALA DI 1.200