

ESECUZIONE IMMOBILIARE N.17/2025 RGEs

**“PRISMA SPV SRL”
contro**

ALLEGATO ALLA RELAZIONE DI CTU

RILIEVO FOTOGRAFICO DELL'IMMOBILE

LOTTO UNICO

Marsala, 30-07-2025

**Il CTU
geom. Parrinello Salvatore**

Firmato digitalmente
da
salvatore parrinello

O = Collegio dei Geometri
di Trapani
T = Geometra
SerialNumber =
TINIT-PRRSVT72R15D423H
C = IT

foto1-esterno Est



foto2-esterno Est



foto3-esterno Ovest



foto4- pianerottolo d'accesso

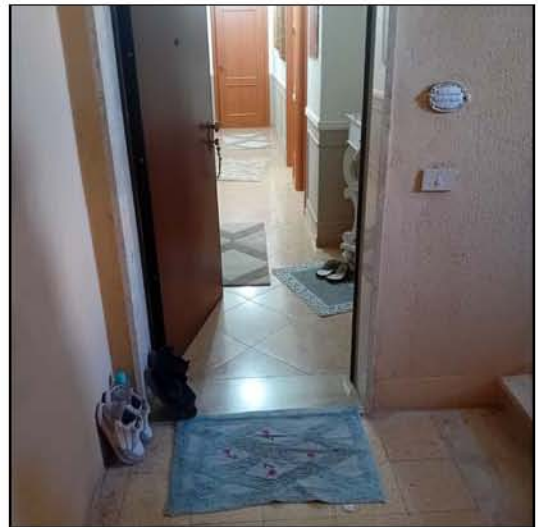


foto5



foto6

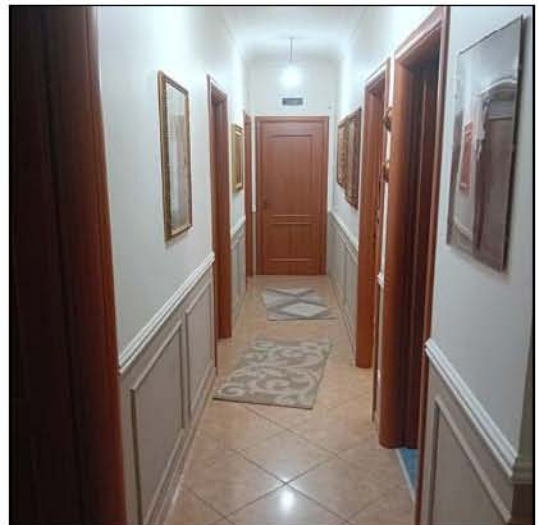


foto7



foto8



foto9

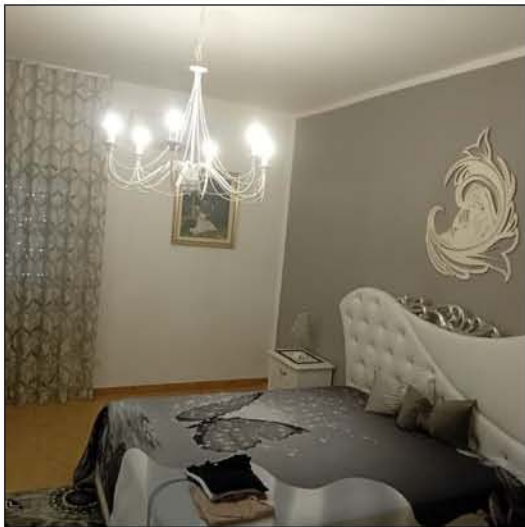


foto10



foto11

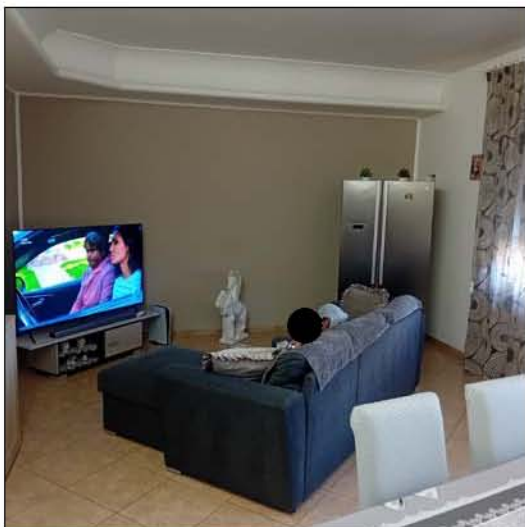


foto 12

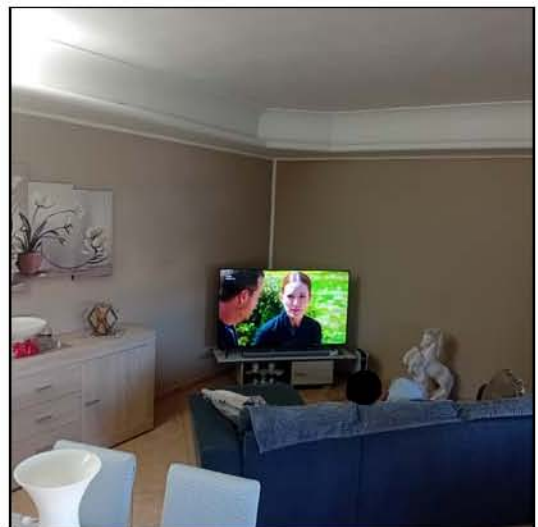


foto 13

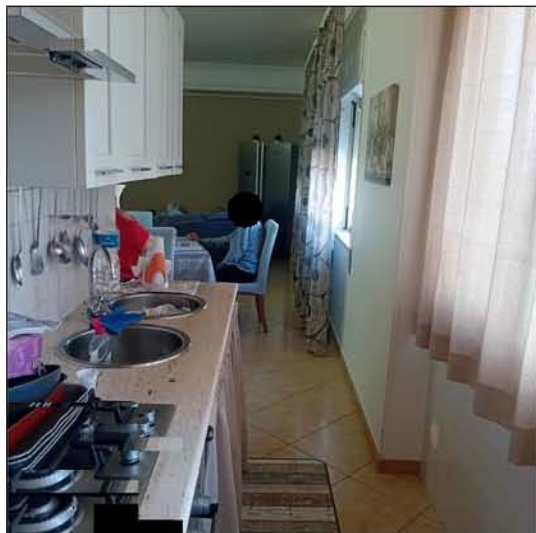


foto 14

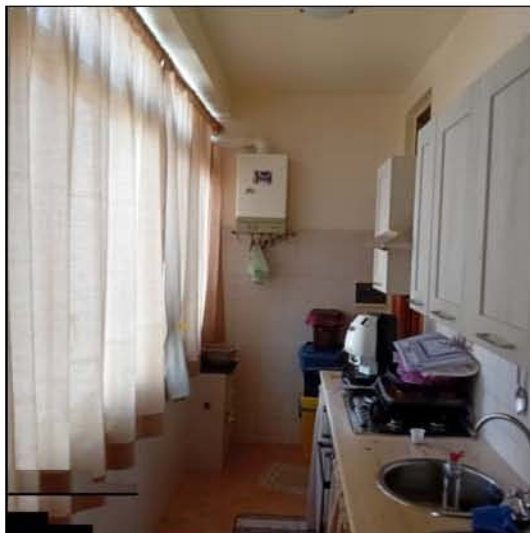


foto 15



foto 16

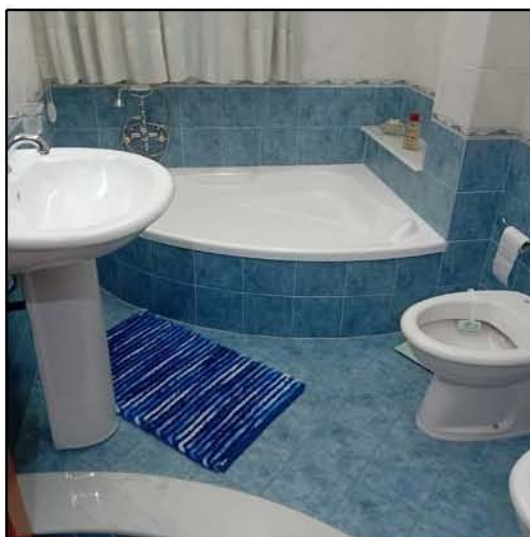


foto 17

