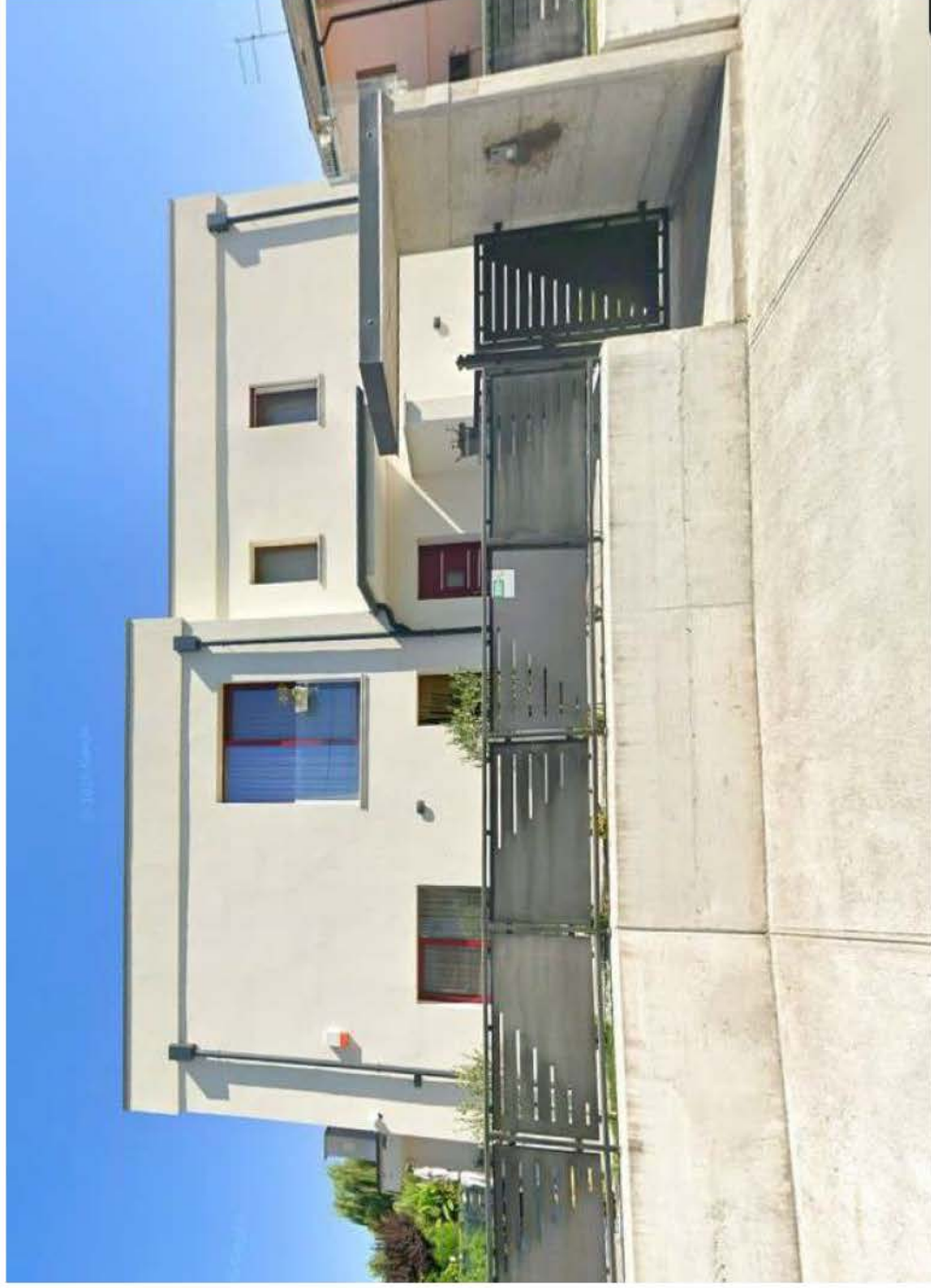


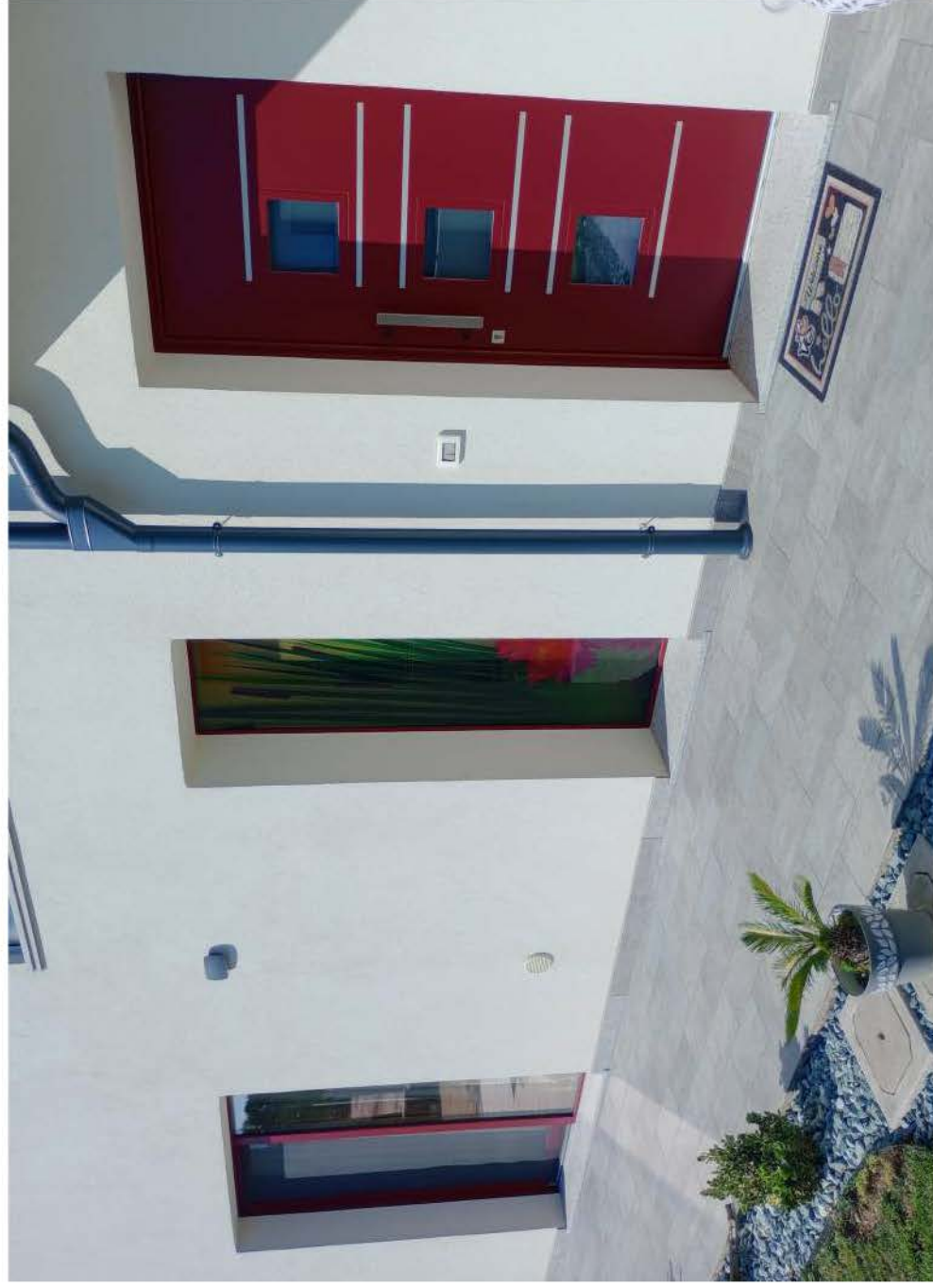
**DOCUMENTAZIONE FOTOGRAFICA**  
**ESECUZIONE IMMOBILIARE R.E. 32/2025**

vista lato strada



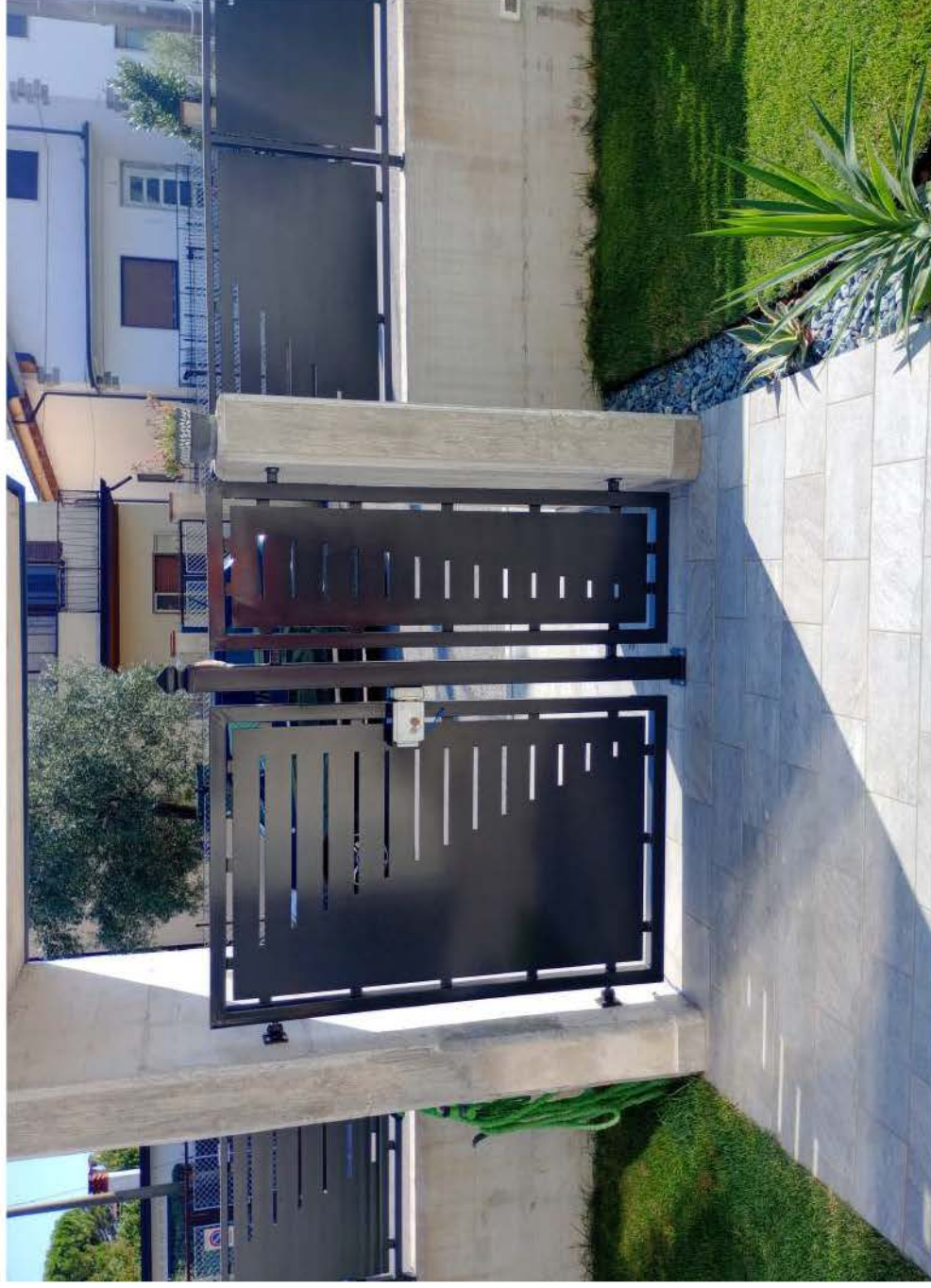
vista lato strada

ingresso



ingresso carrabile

ingresso pedonale



porte - finestre camere da letto

giardino lato ingresso



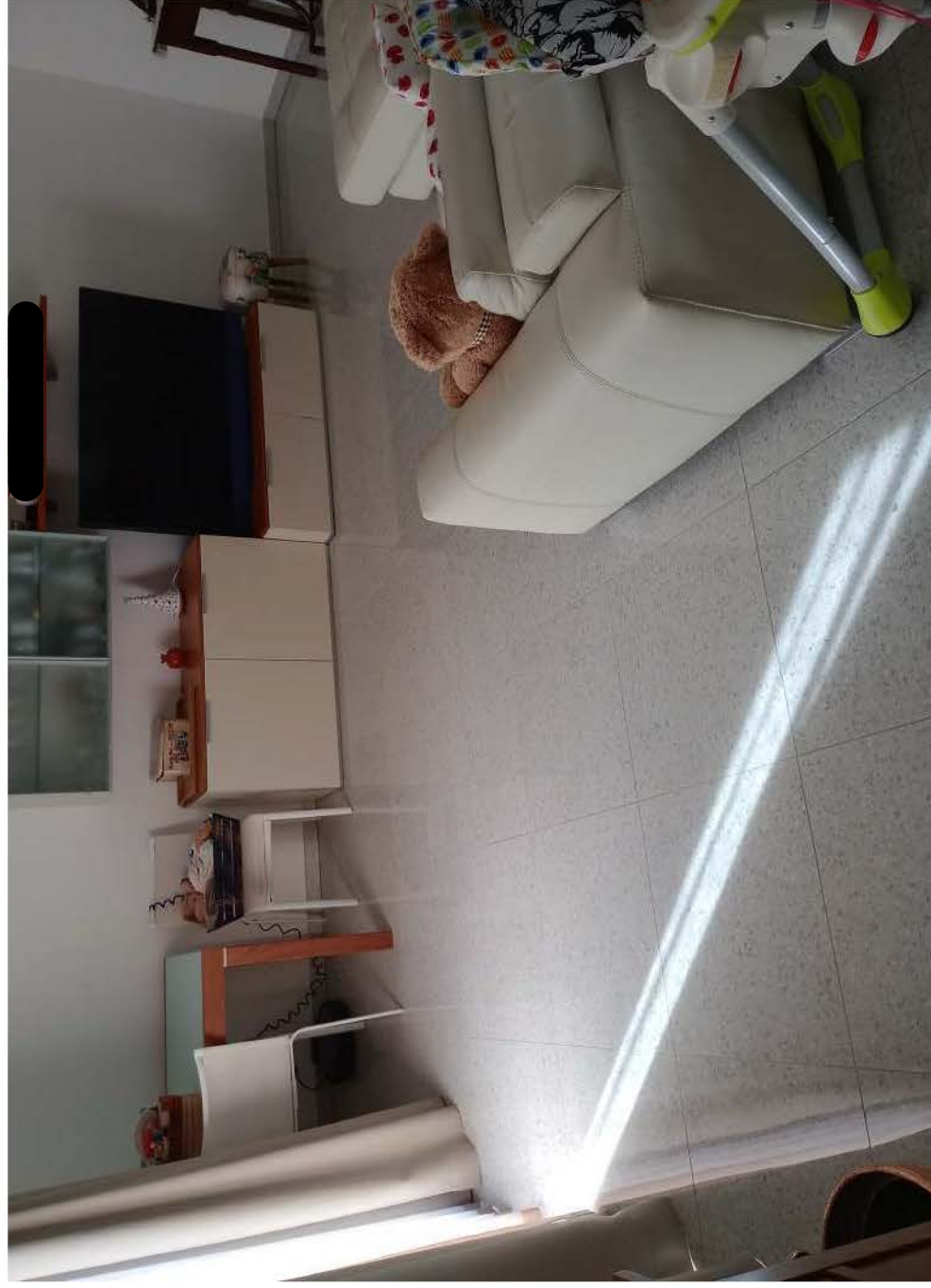
sottoportico

giardino lato postico



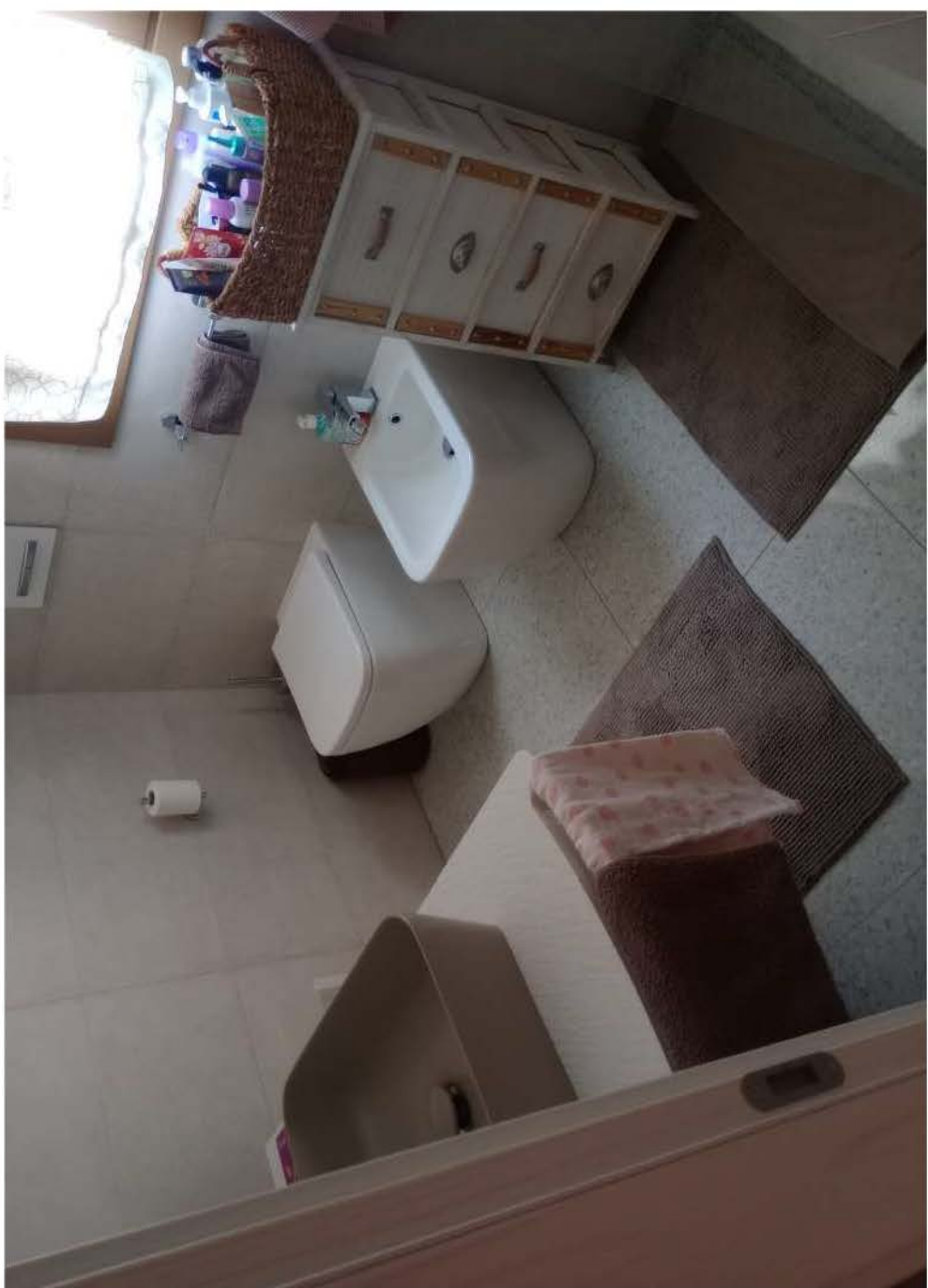
deposito attrezzi

atrio/ingresso



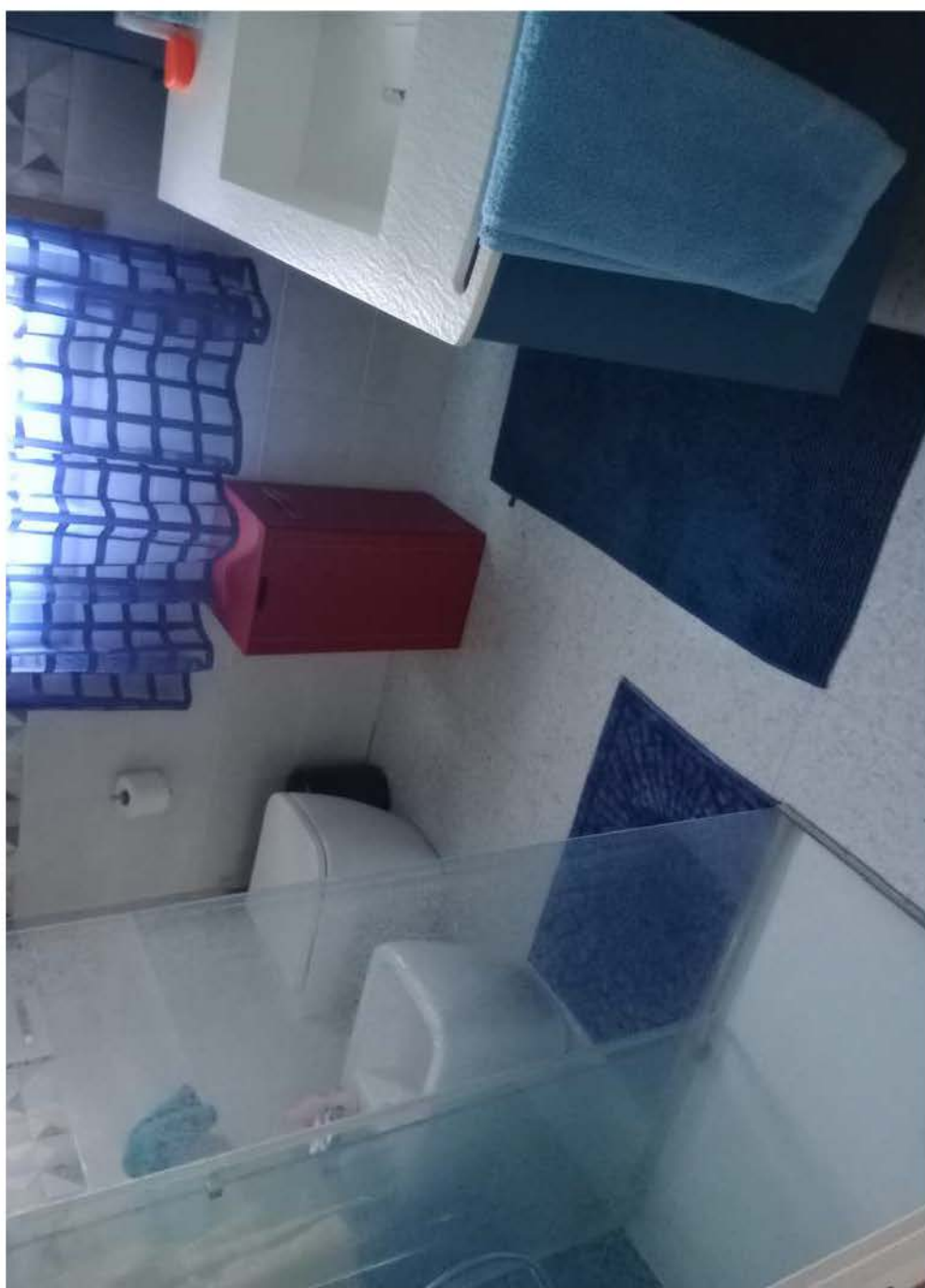
soggiorno

bagno 1



bagno 1

disimpegno



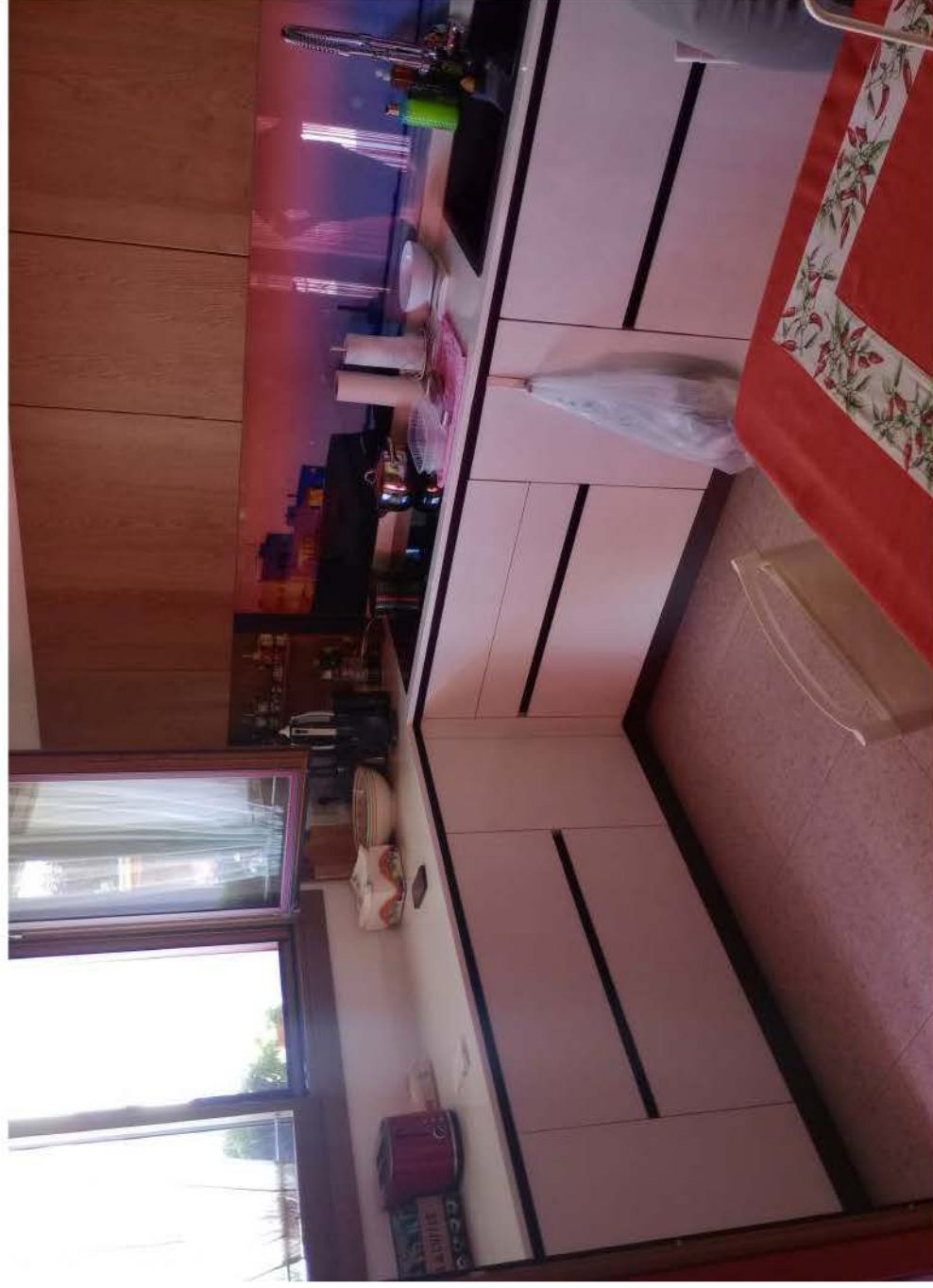
bagno 2

camera 1



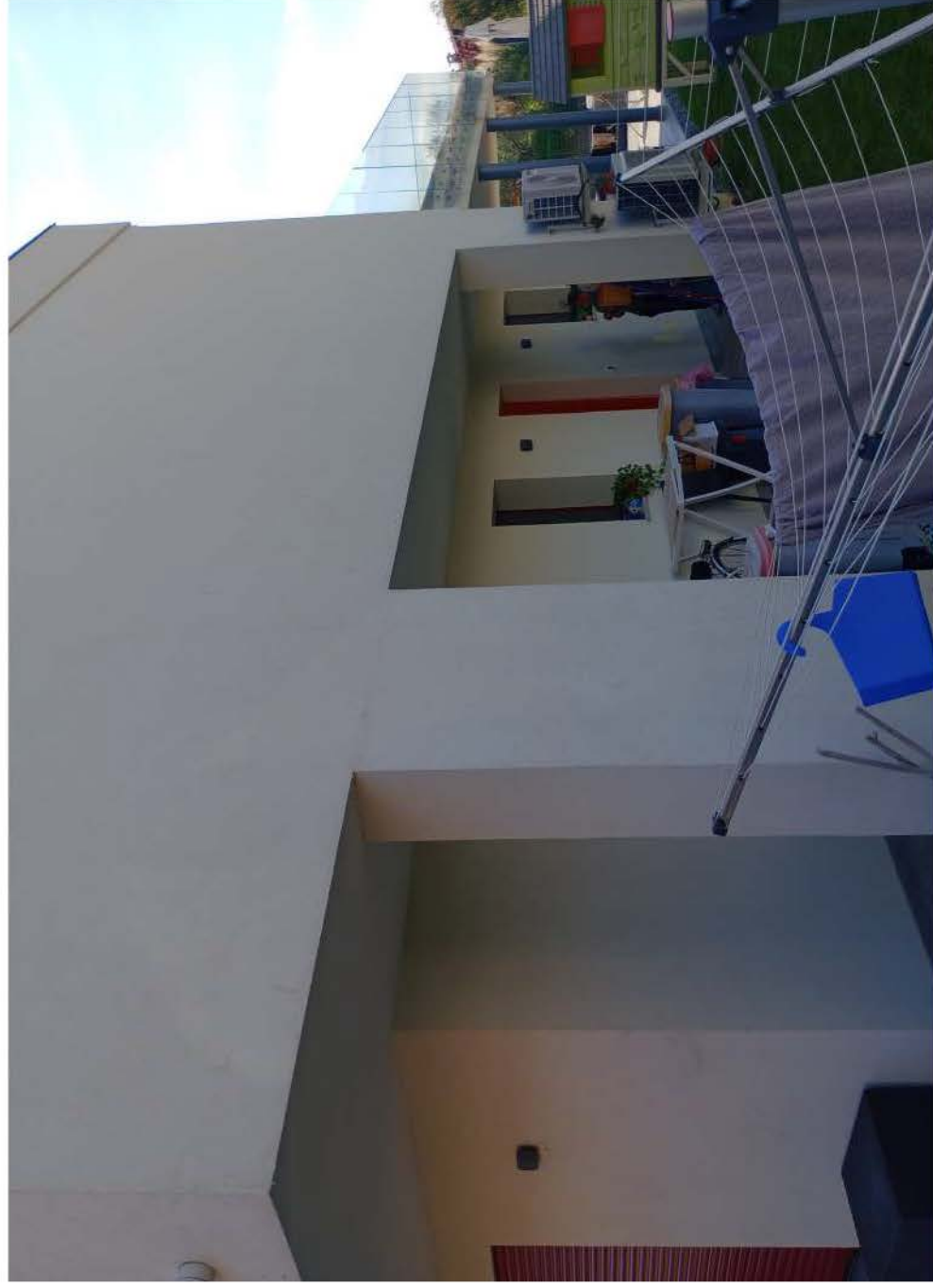
camera 2

cucina



particolare serramenti

lato postico



pompa di calore

pompa di calore



inverter fotovoltaico

quadro elettrico

