

TRIBUNALE DI AGRIGENTO

- SEZIONE ESECUZIONI IMMOBILIARI -

PROCEDURA ESECUTIVA IMMOBILIARE R.G.E. N. 12/2024

- *GIUDICE DELLE ESECUZIONI: DOTT. MATTEO DE NES*
- *CUSTODE GIUDIZIARIO: AVV. LUCA VETRO*
- *ESPERTO TECNICO DEL GIUDICE: ING. LUIGI MESSINA*

FASCICOLO DI STIMA

- *ALL.1.2 – ELABORATO FOTOGRAFICO*

Agrigento, Novembre 2025

L'E.d.G.
Ing. Luigi Messina



ESTERNO FABBRICATO

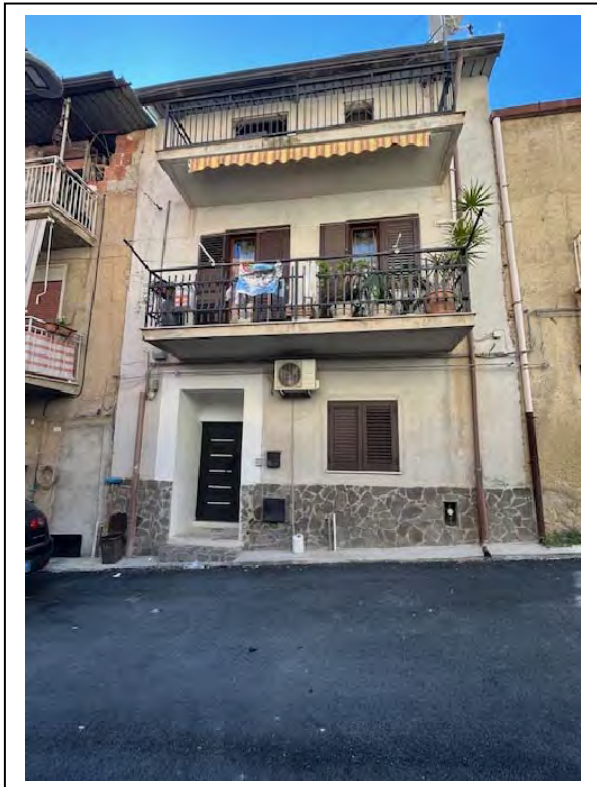


Foto 1 – Esterno – Prospetto su via Isonzo



Foto 2 – Esterno – Prospetto su via Notar G. Vaccaro

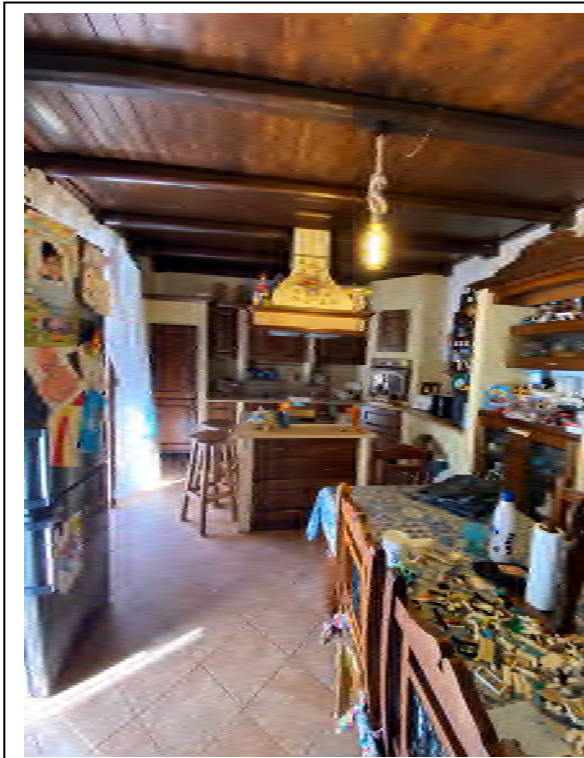


Foto 3 – interno

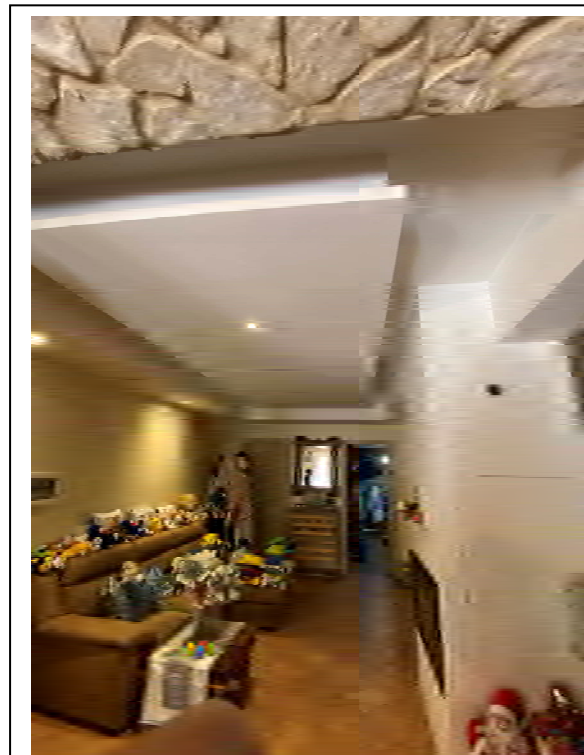


Foto 4 – interno

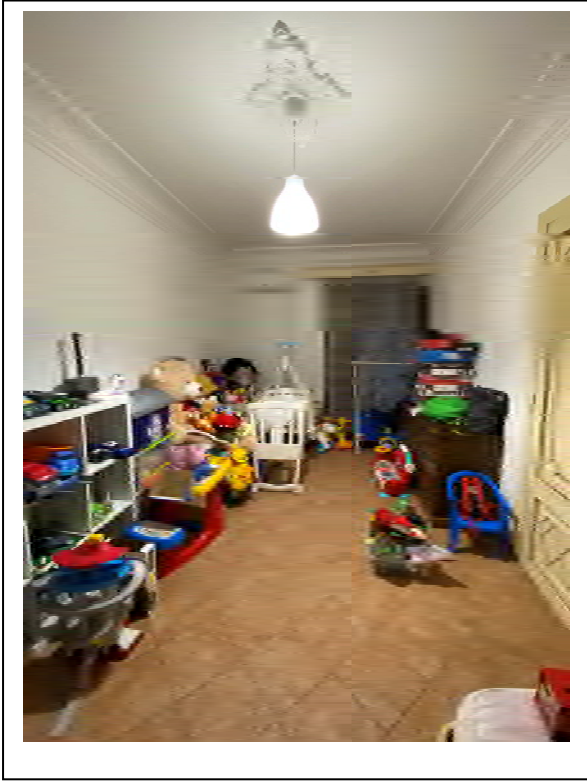


Foto 5 – interno

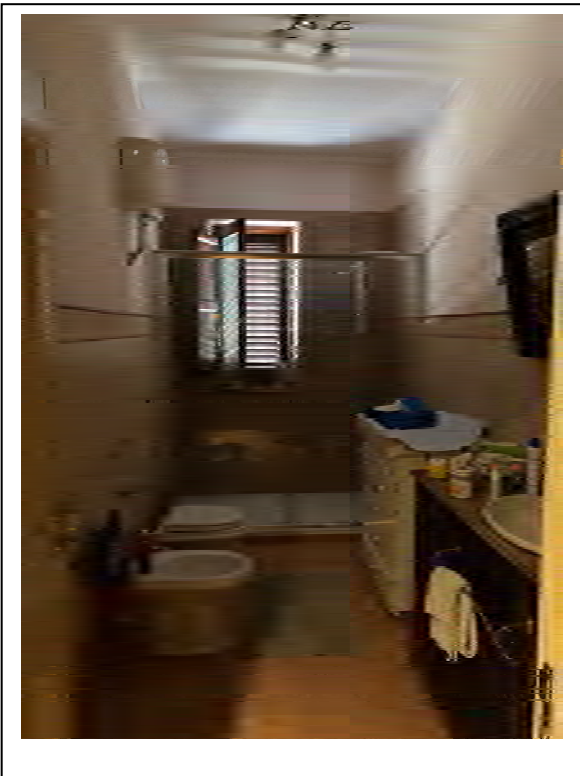


Foto 6 – interno



Foto 7 – interno

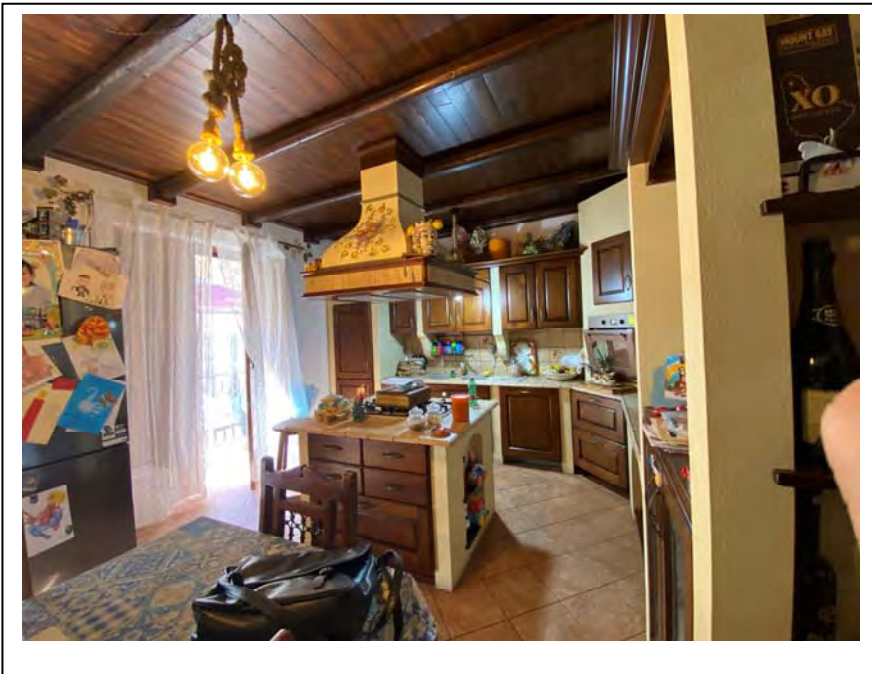


Foto 8 – interno

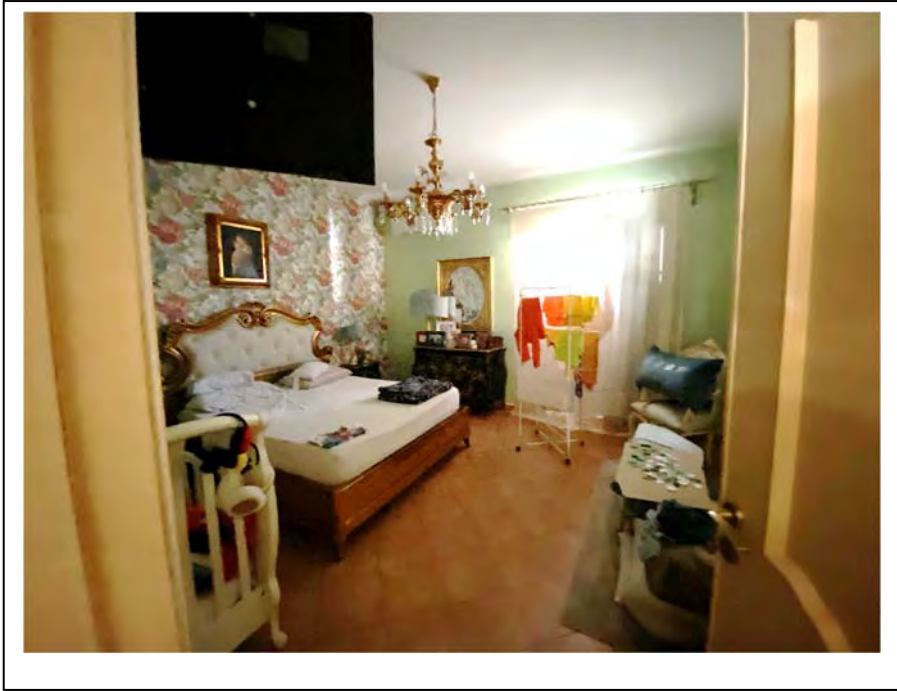


Foto 9 – interno

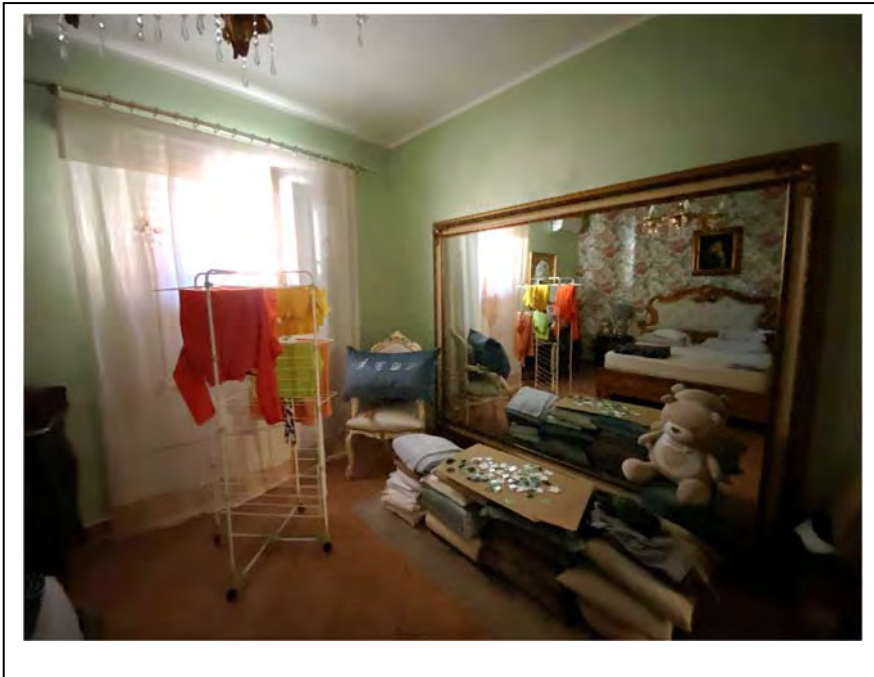


Foto 10 – interno

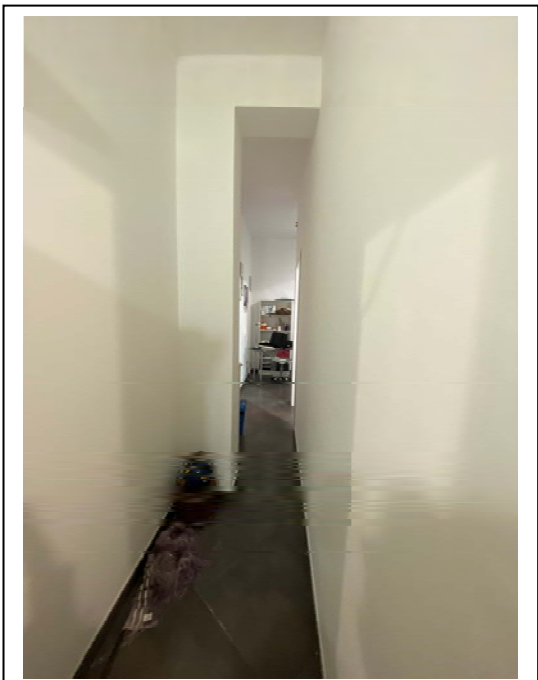


Foto 11 – interno

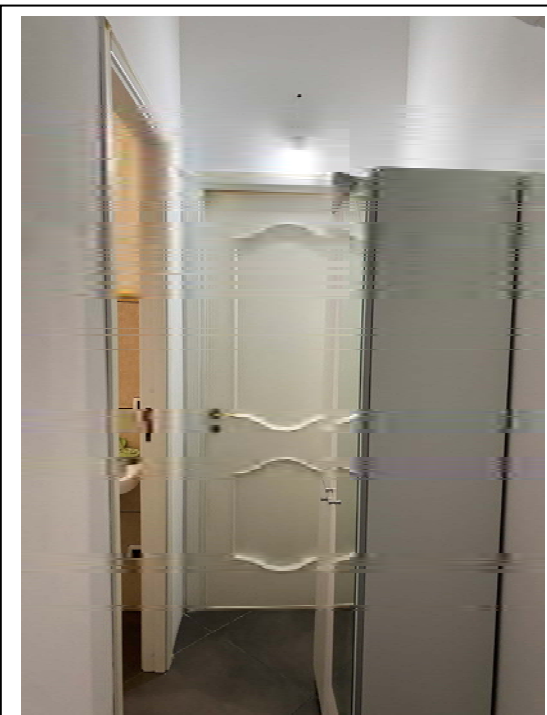


Foto 12 – interno

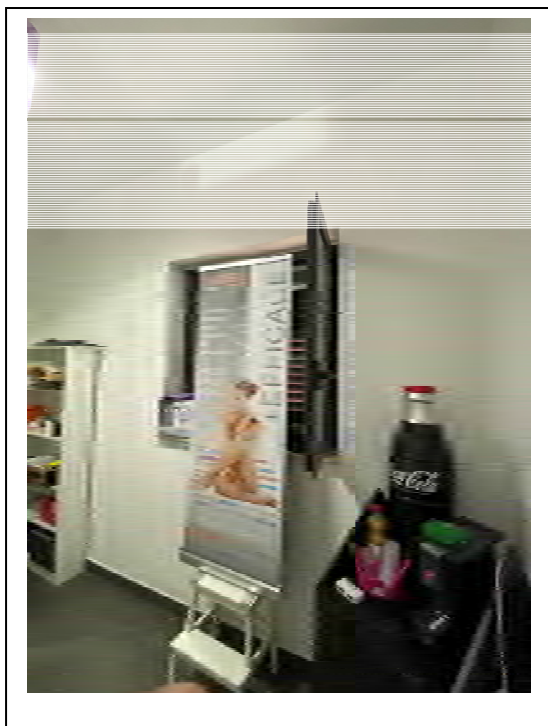


Foto 13 – interno

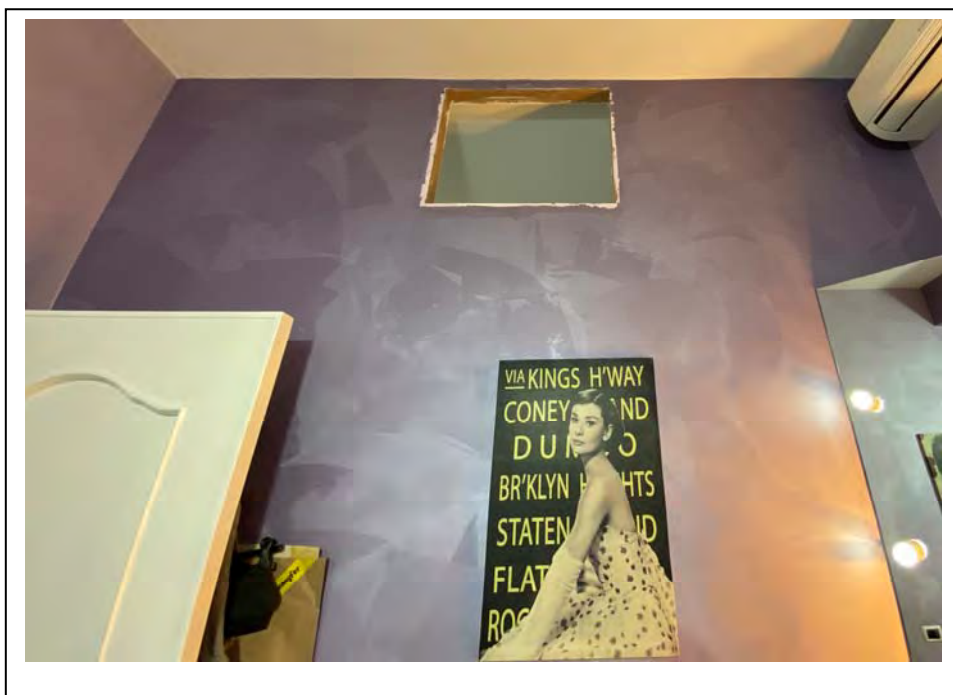


Foto 14 – interno



Foto 15 – interno

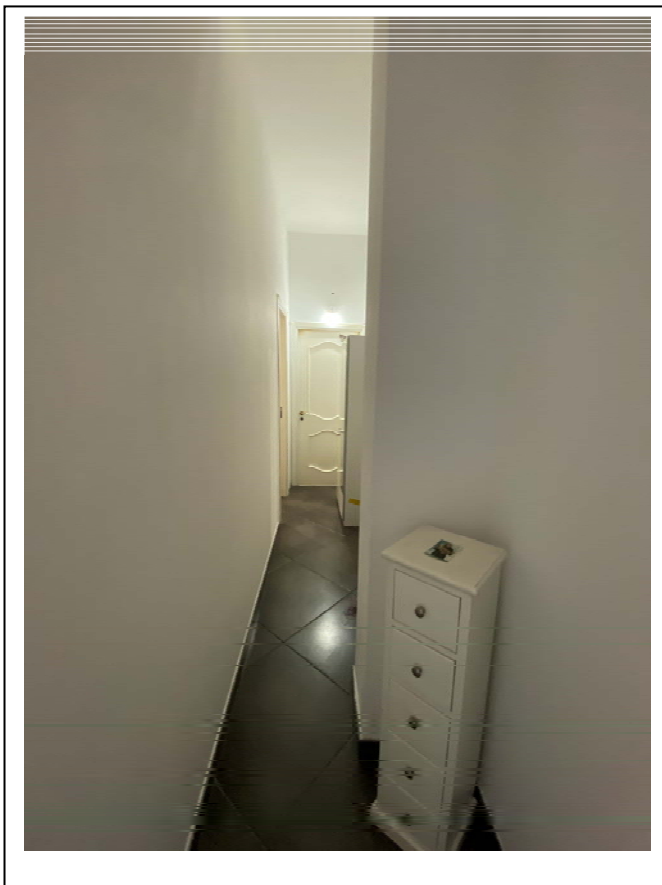


Foto 16 – interno



Foto 17 – interno



Foto 18 – interno

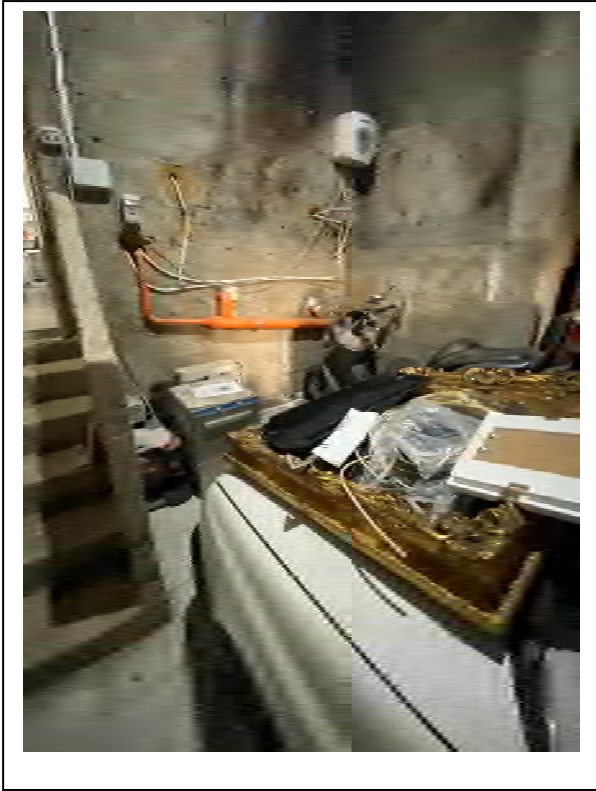


Foto 19 – interno

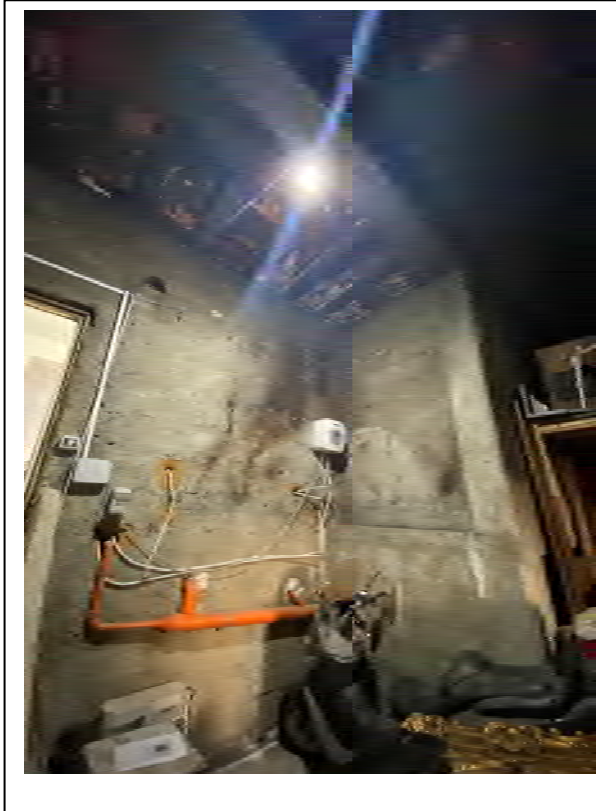


Foto 20 – interno

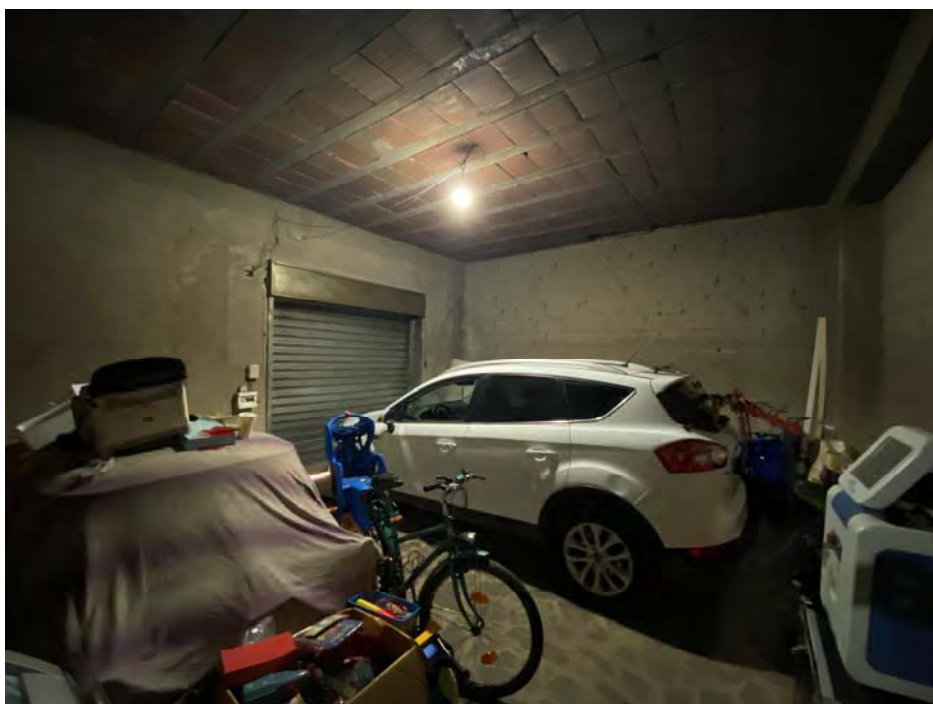


Foto 21 – interno



Foto 22 – interno

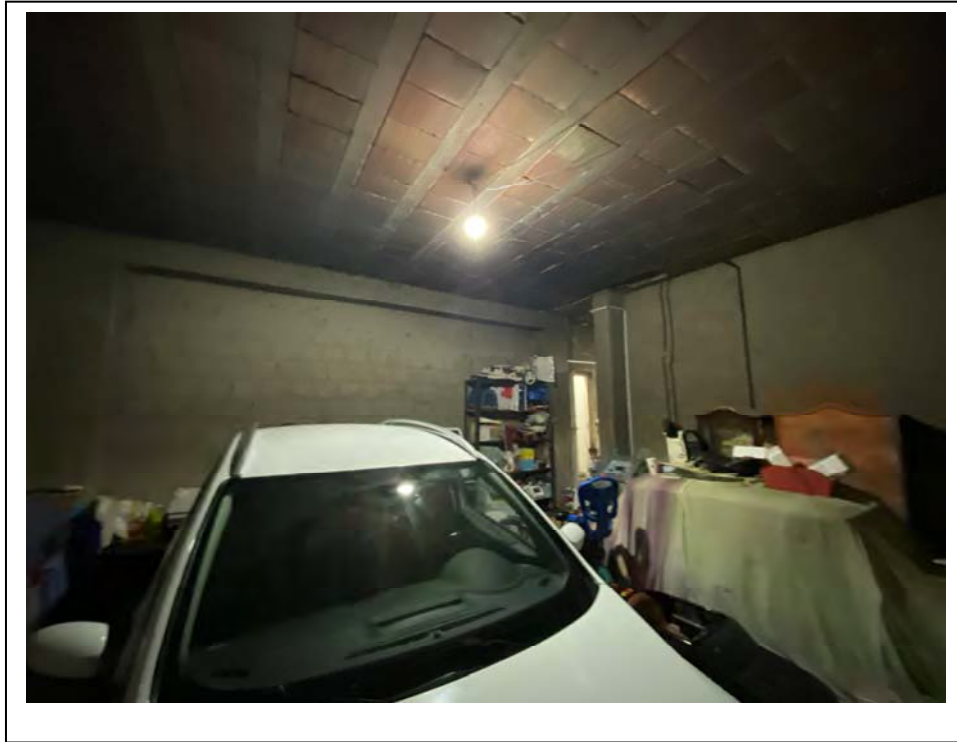


Foto 23 – interno

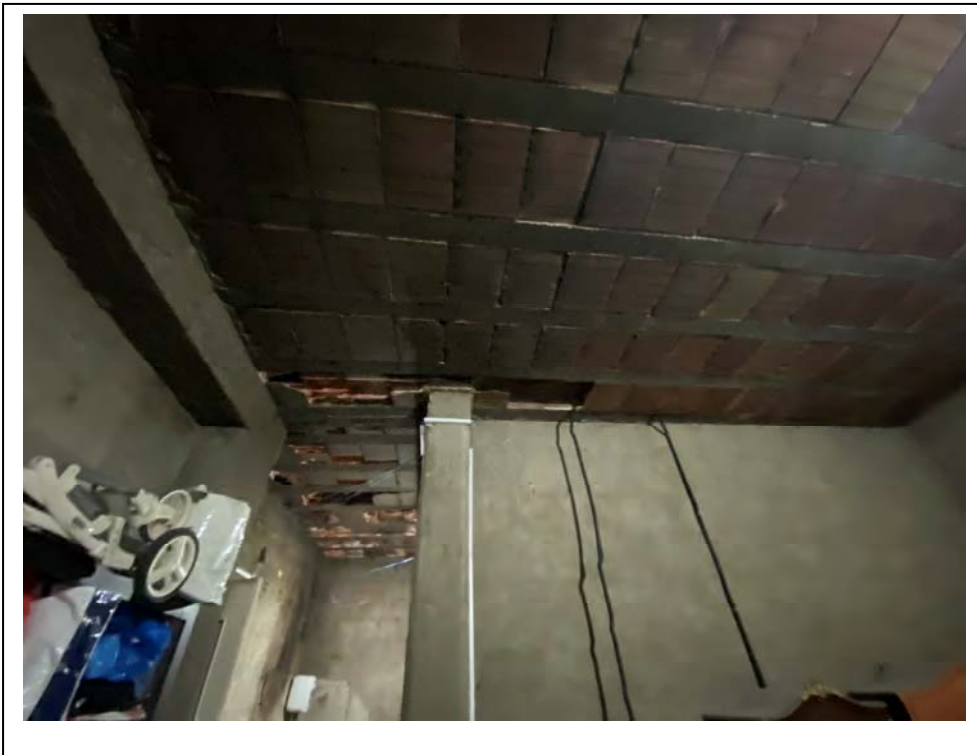


Foto 24 – interno