

Area Scoperta  
mq. 60,51

Deposito Farina  
117,53 mq

Reparto pesatura  
mq 42,85

Deposito crusca  
41,84 mq

Tettoia coperta  
mq 8,08

Spogliatoio  
mq 12,70

Locale vendita  
mq 29,75

Silos riposa grano  
mq 7,35

Atrio coperto - Dis.  
mq 49,42

W.C.  
mq 3,99

Sala laminatoi  
mq 38,88

Reparto prima pultura  
e spietatura  
mq 16,84

Cisterna

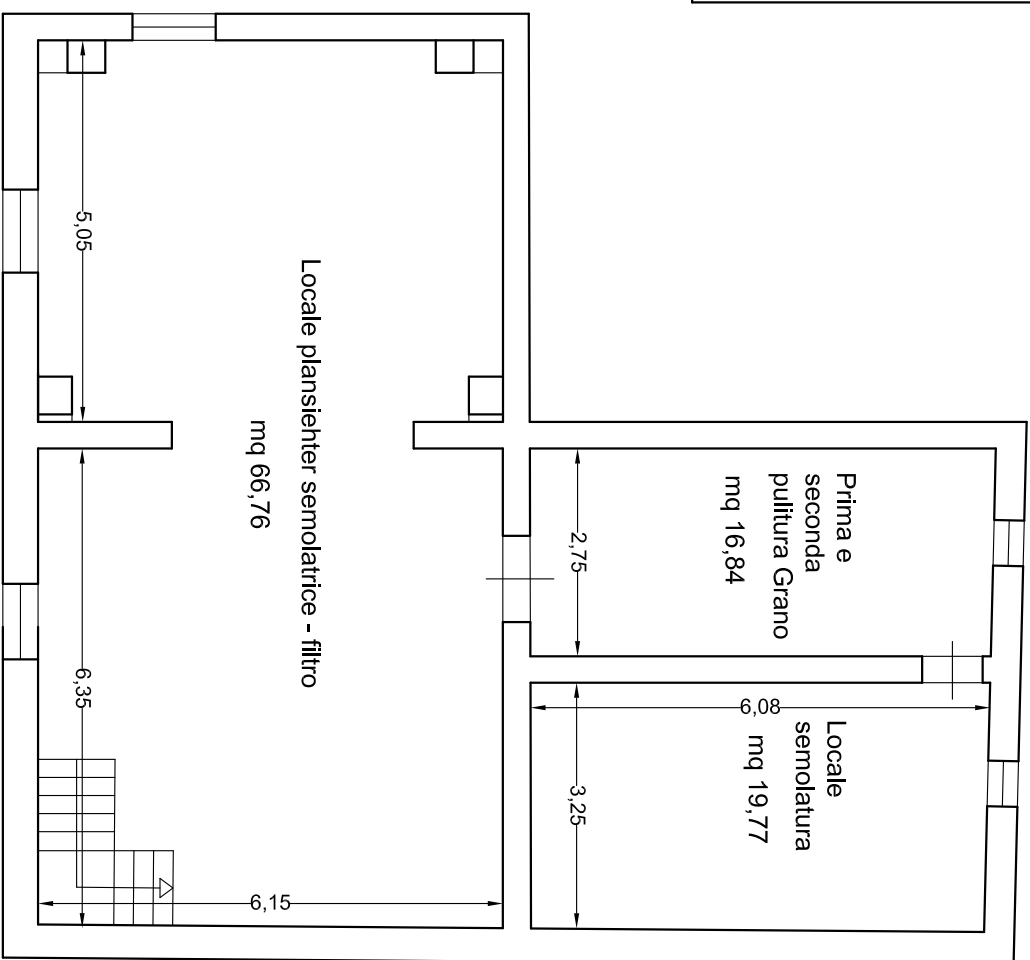
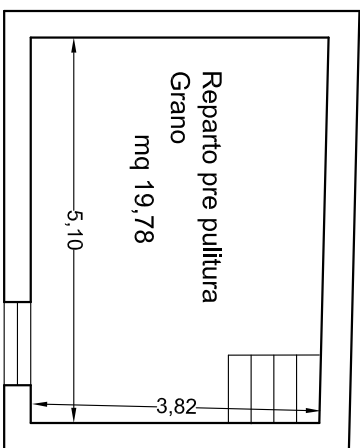
Dis.  
mq 14,70

locale motori  
mq 3,44

Scivolo

Bilico

PIANO TERRA



**PIANO PRIMO**