

---

# TRIBUNALE DI NOLA

---

SEZIONE EE.II.

**PERIZIA** dell'Esperto ex art. 568 c.p.c. **Arch. Stabile Francesca**, nell'Esecuzione Immobiliare **33/2023**  
**del R.G.E.**

## ALLEGATO 2

## RILIEVO FOTOGRAFICO

**Marigliano, 05/04/2024**

**L'Esperto ex art. 568 c.p.c.**

***Arch. Stabile Francesca***

## **RILIEVO FOTOGRAFICO**

**0**



Foto 1 Facciata d' ingresso fabbricato lato est

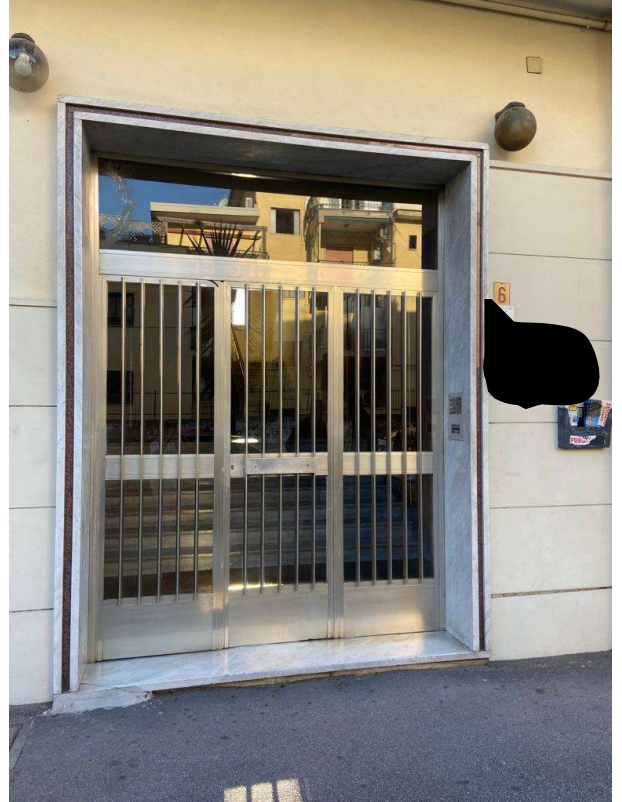


Foto 2 Portoncino d' ingresso al fabbricato

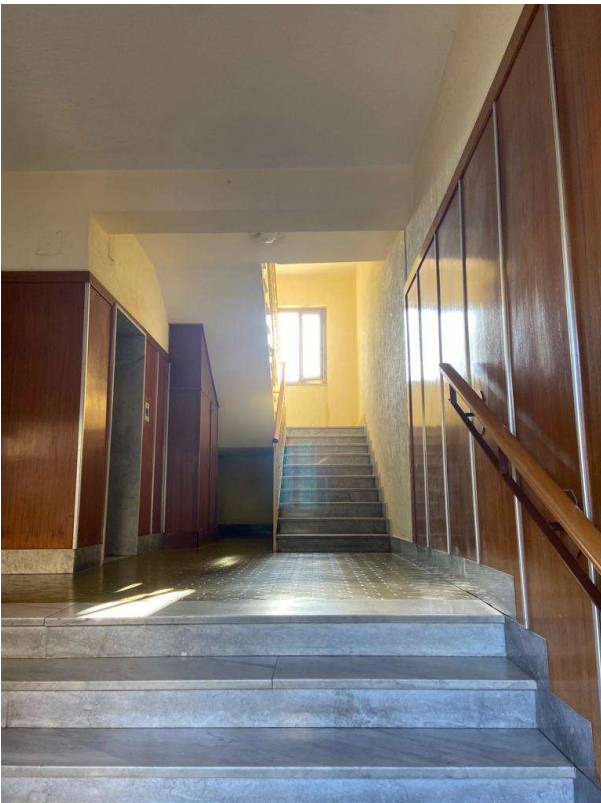


Foto 3 Androne d' ingresso scala condominiale

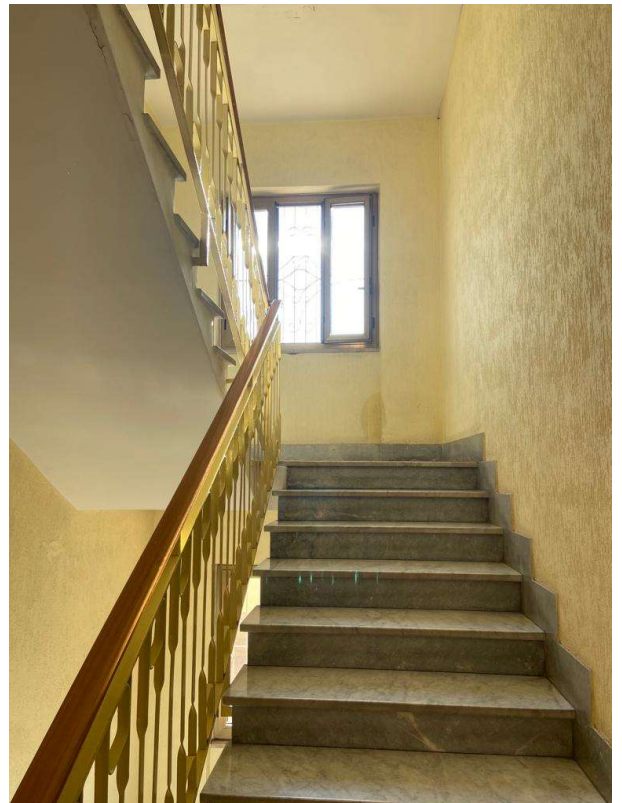


Foto 4 Scala condominiale



Foto 5 Portoncino d' ingresso all' appartamento

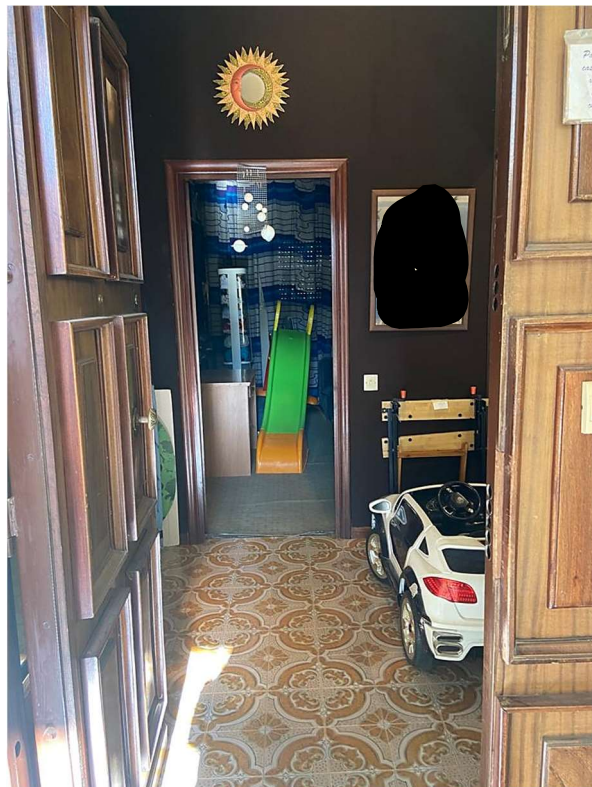


Foto 6 Ingresso



Foto 7 Studio



Foto 8 Corridoio

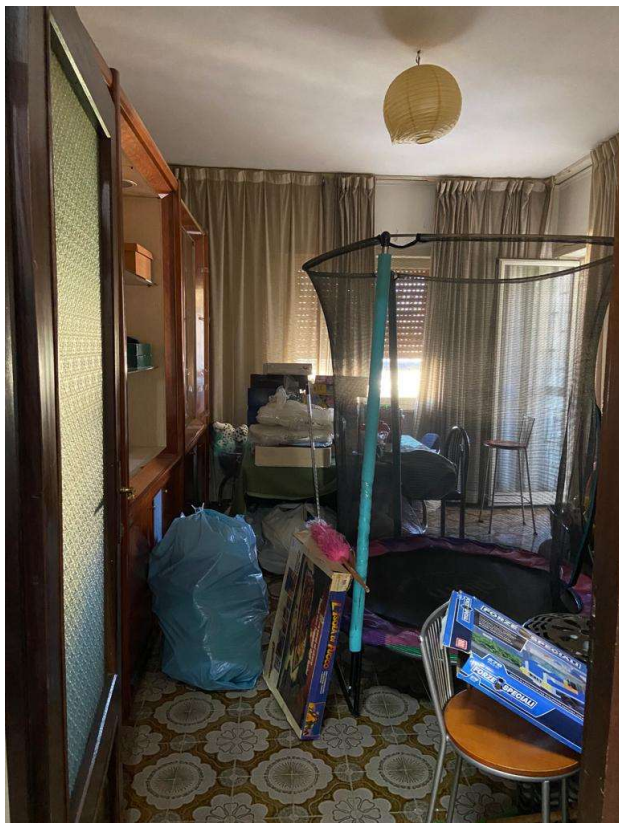


Foto 9 Soggiorno

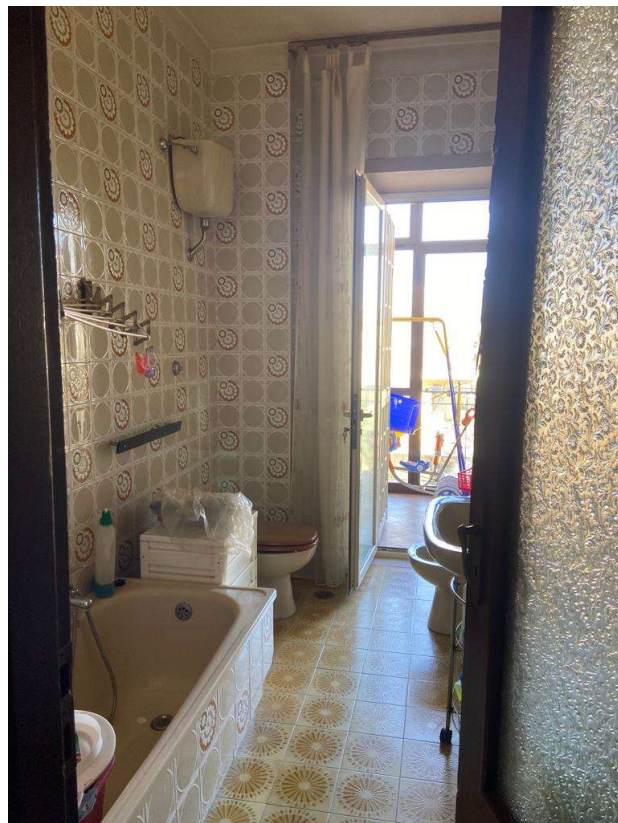


Foto 10 Wc 2

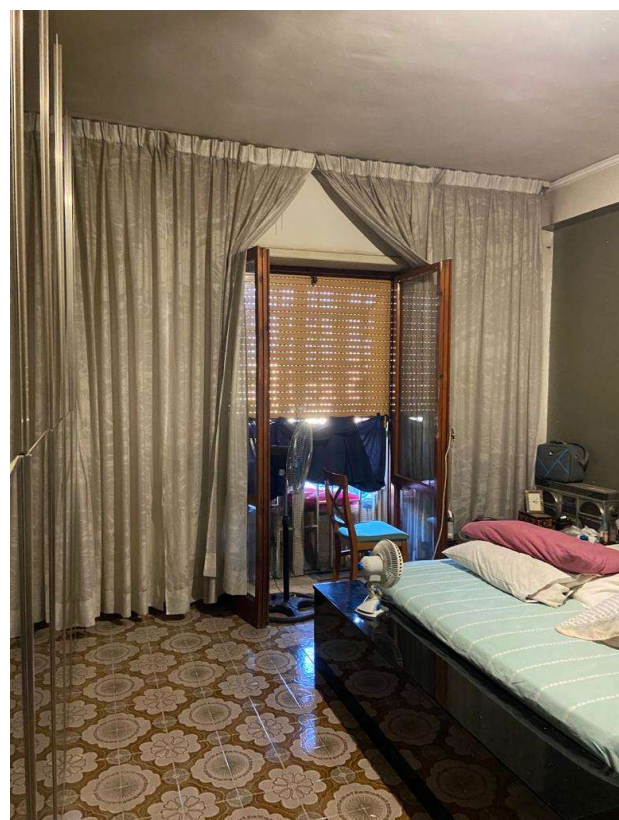


Foto 11 Camera letto 1



Foto 12 Camera letto 2

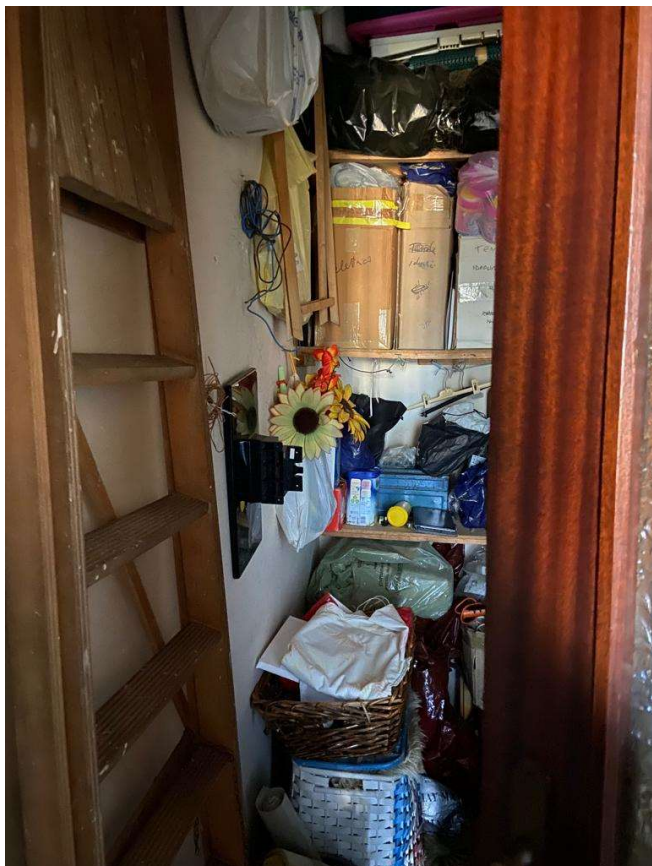


Foto 13 Ripostiglio

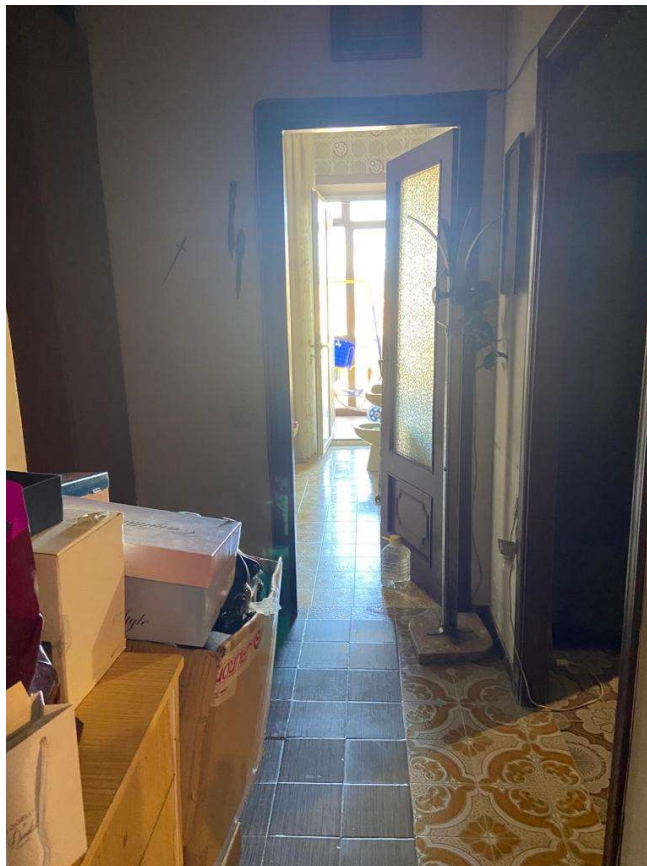


Foto 14 Disimpegno

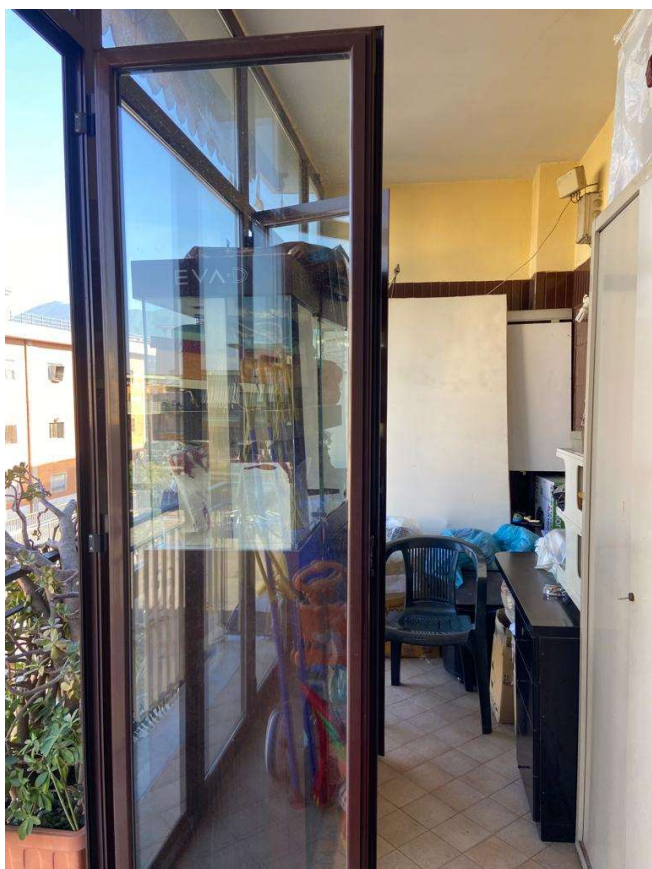


Foto 15 Balcone 2

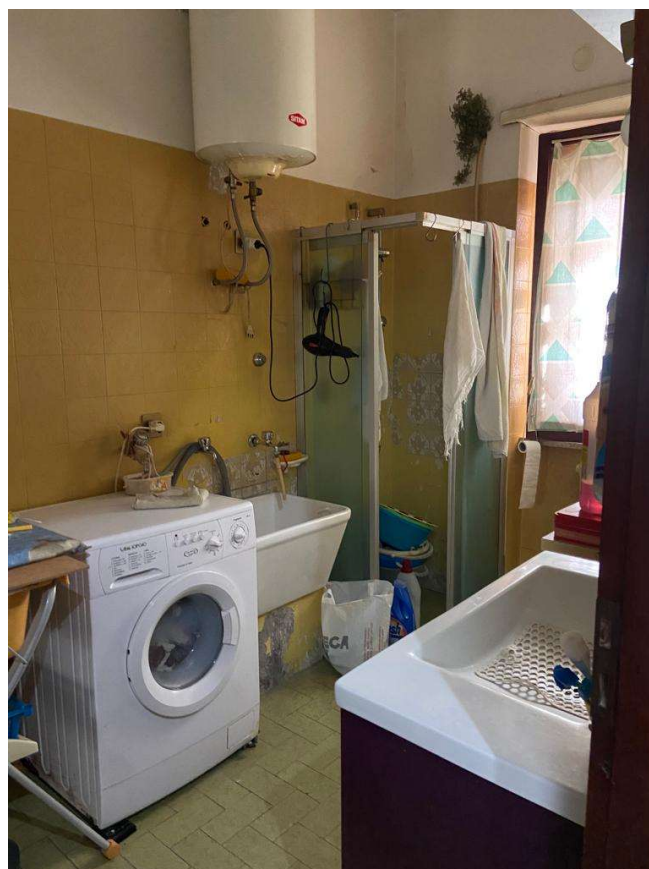


Foto 16 Wc 1



Foto 17 Cucina



Foto 18 Balcone 1