

ALLEGATO E 12: FOTOGRAFIE DEGLI INTERNI



Ingresso - soggiorno





Cucina - pranzo





Particolare caldaia murale in nicchia

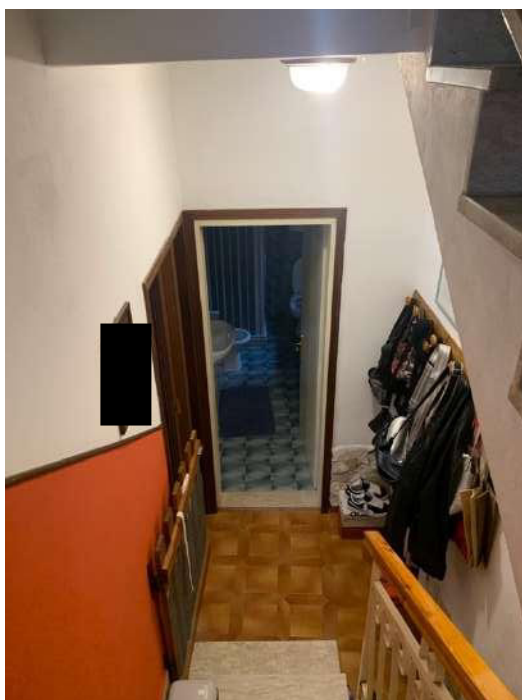


Angolo cucina - p.t.



Bagno - p.t.





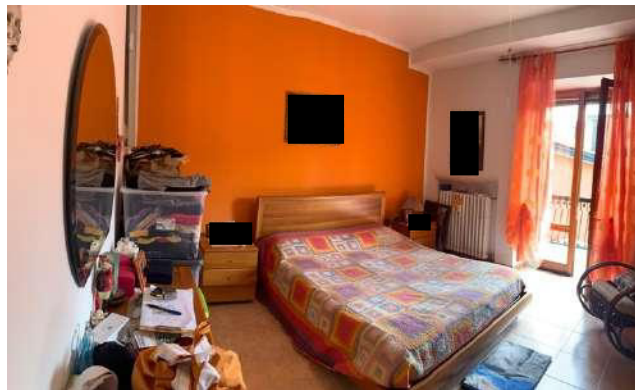
vano scale







Disimpegno - p.1



Camera matrimoniale - p.1



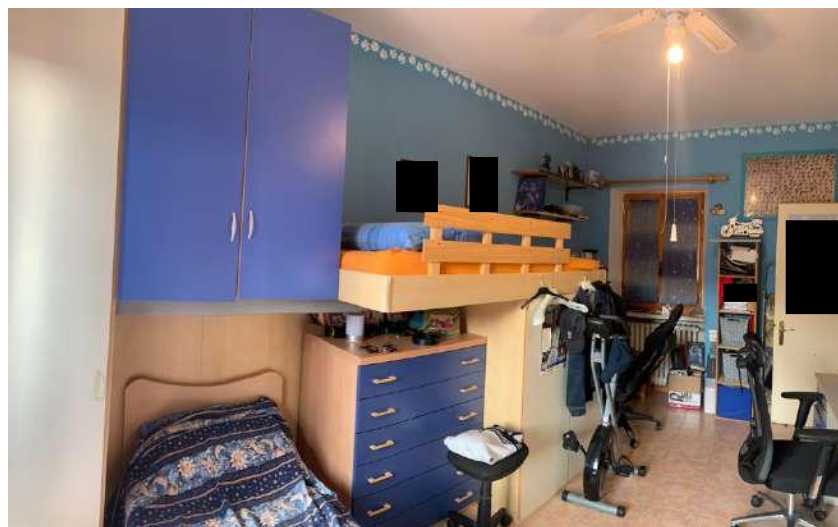


Balcone camera matrimoniale – p.1





Camera – p.1



VANO ACCESSORIO



Garage – p.t.





Accesso ripostiglio - p.t



Ripostiglio - p.t



Scala di accesso al piano 1



Locale soffitta - p.1



