

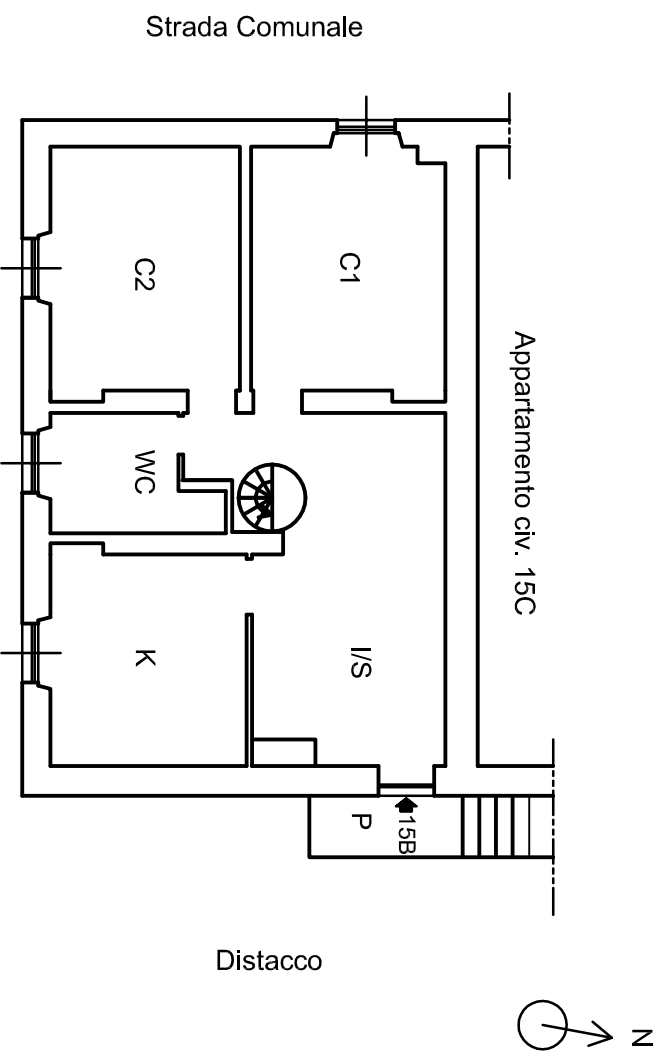
**TRIBUNALE DI GENOVA - VII SEZIONE CIVILE**  
**PROCEDURA ESECUTIVA IMMOBILIARE N° rge 263/2020**  
**RELAZIONE DI CONSULENZA TECNICA D'UFFICIO**

**ALLEGATO N. 2**  
**RILIEVO PLANIMETRICO DELL'IMMOBILE**

Il Consulente Tecnico d'Ufficio  
Dott. Ing. Emilio Di Nardo

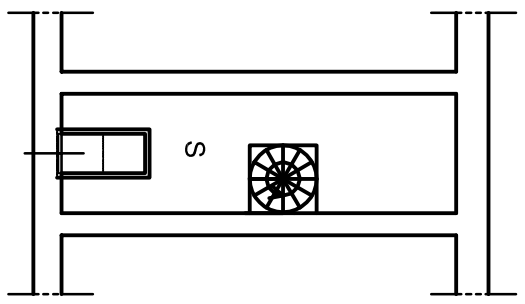


APPARTAMENTO SITO IN VIA PARADISO 15B (PIANO 1) - GENOVA  
 DISPOSIZIONE DEI LOCALI

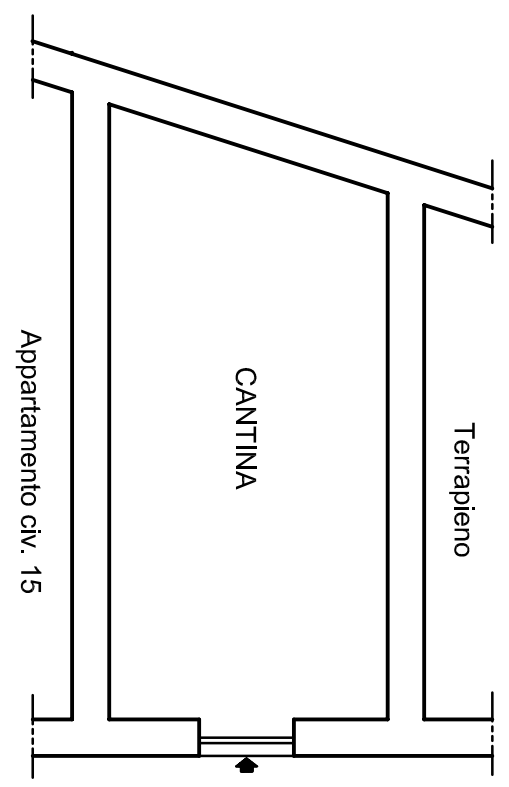


- LEGENDA
- I/S = Ingresso / Sala
  - C1 = Camera
  - C2 = Camera
  - K = Cucina
  - W.C. = Bagno
  - P = Poggiolo
  - S = Soffitta

SOTTOTETTO CIV. 15B



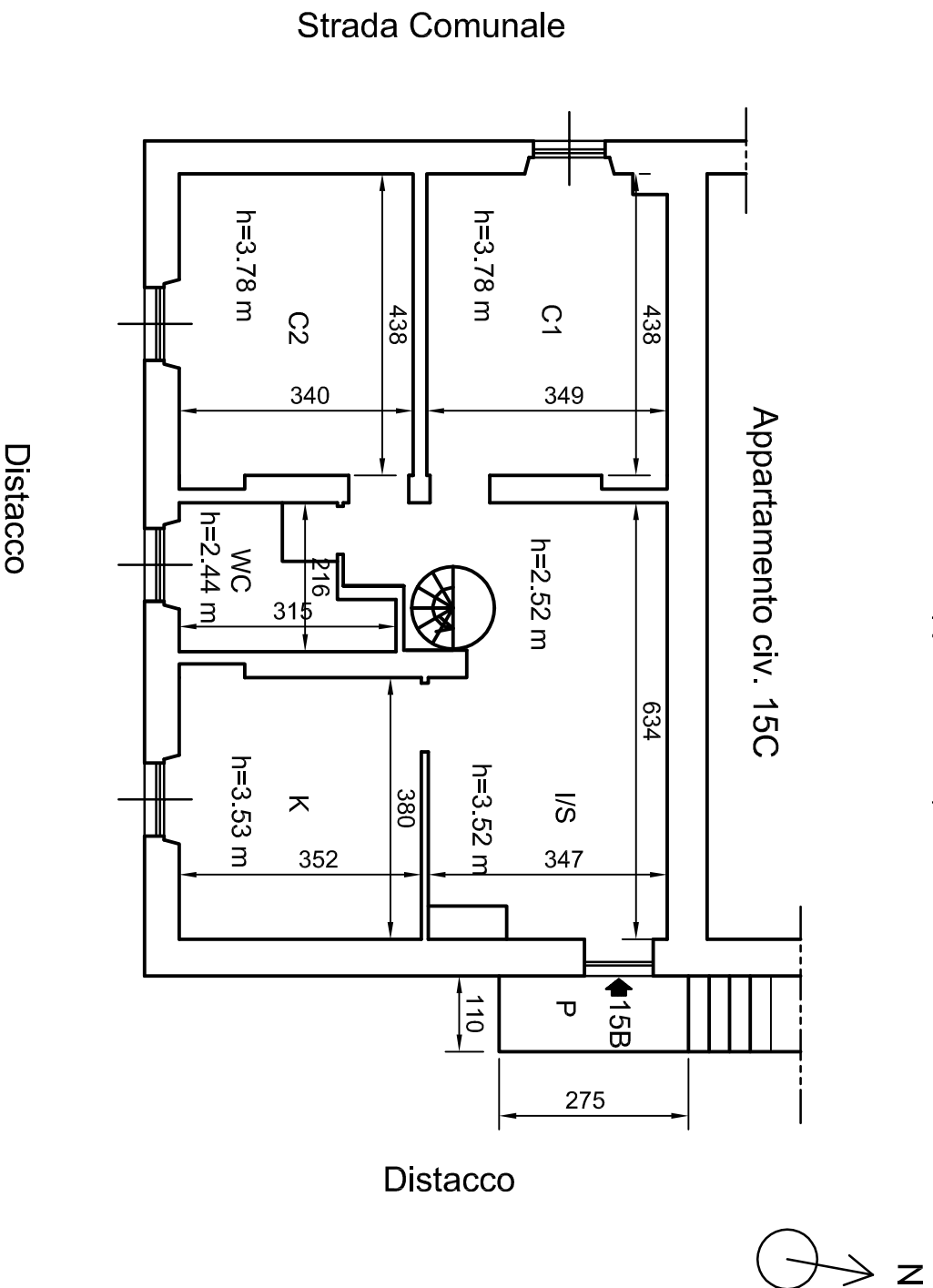
CANTINA CIV. 15B - PIANO TERRA



Appartamento civ. 15

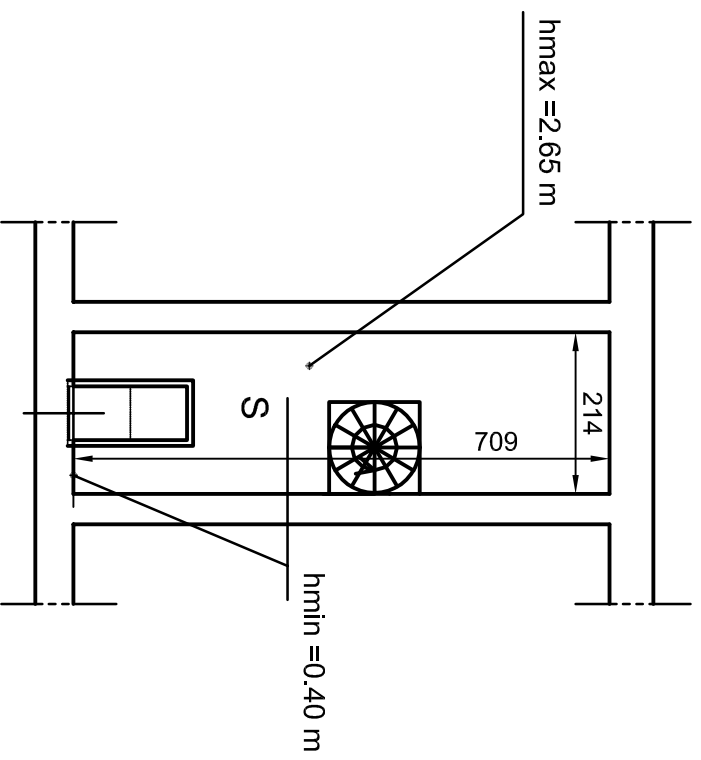
# APPARTAMENTO SITO IN VIA PARADISO 15B (PIANO 1) - GENOVA

RILIEVO PLANIMETRICO 1:100 (quote in cm)

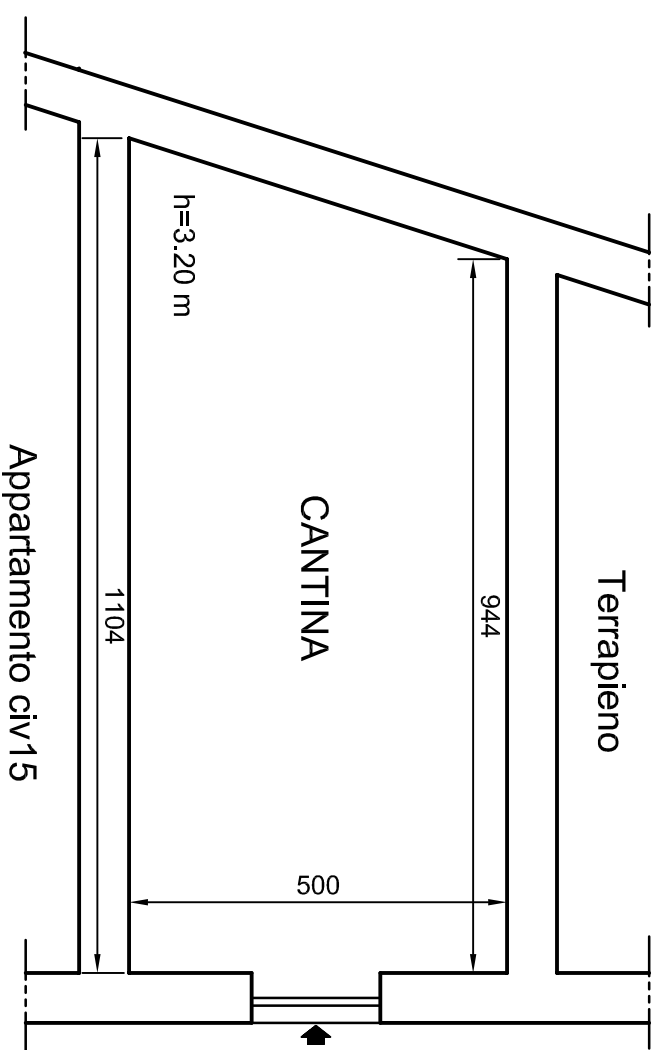


RILIEVO PLANIMETRICO 1:100 (quote in cm)

SOTTOTETTO CIV. 15B

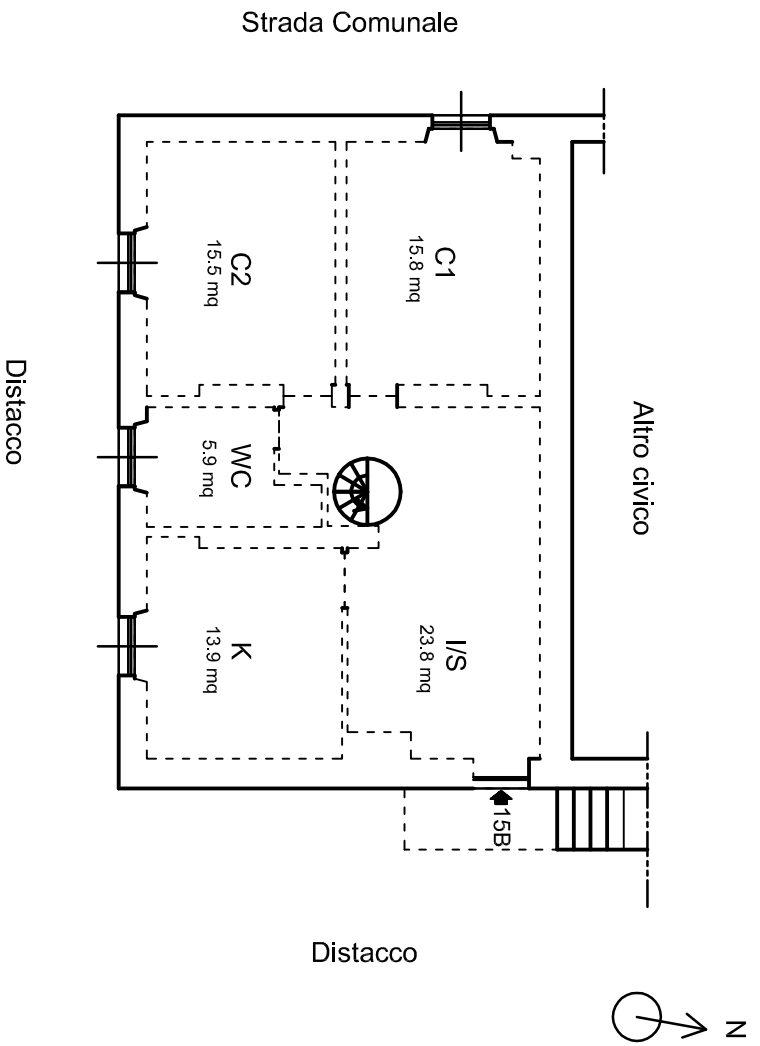


CANTINA CIV. 15B- PIANO TERRA

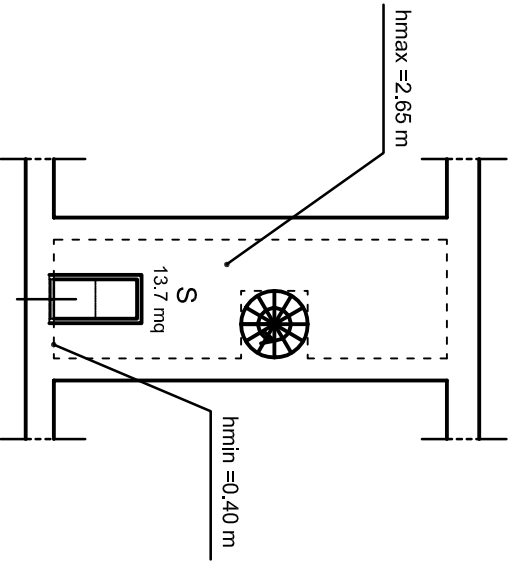


SUPERFICIE NETTA INTERNA: 74.9 mq

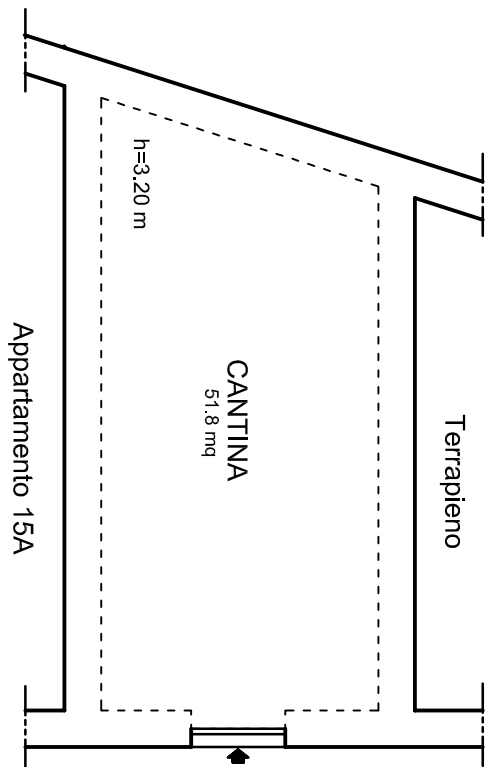
sup. esterna: P 3.02 mq



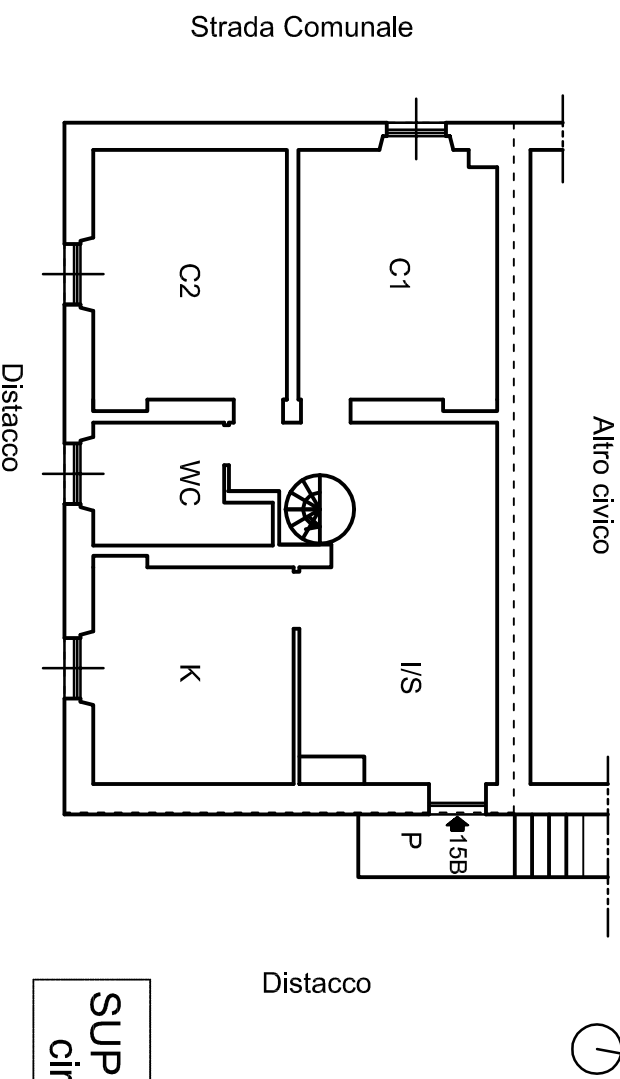
SOTTOTETTO CIV. 15B



CANTINA CIV. 15B

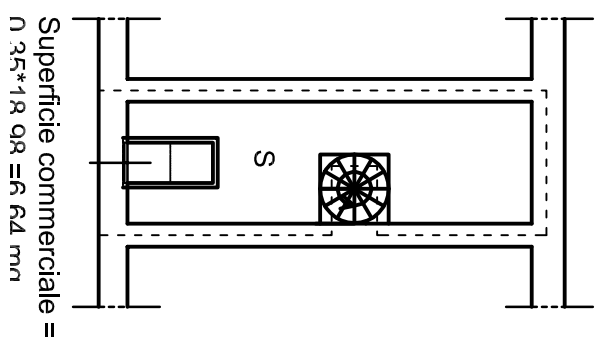


SUPERFICIE COMMERCIALE PRIMO PIANO: 96.11 mq (circa 95.35 + 0.76 mq) N  
(P = 0.25 X 3.025 mq = 0.76 mq)



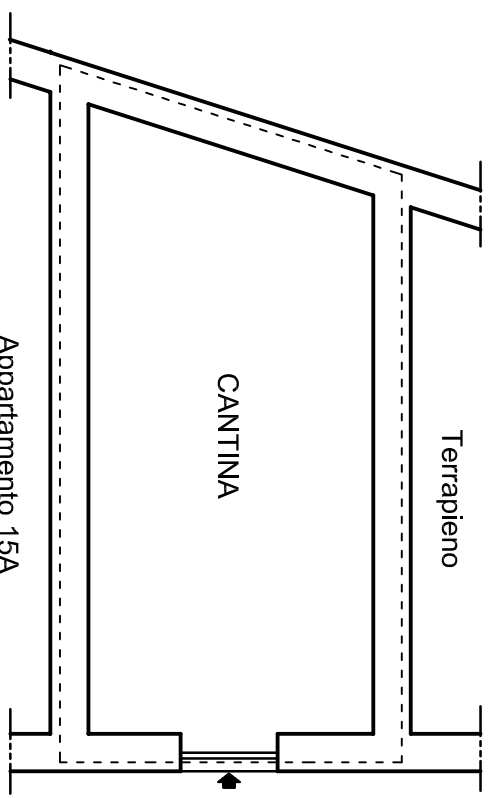
**SUP. COMMERCIALE TOTALE :**  
circa 116 mq (96 + 14 + 6)

SOTTOTETTO CIV. 15B



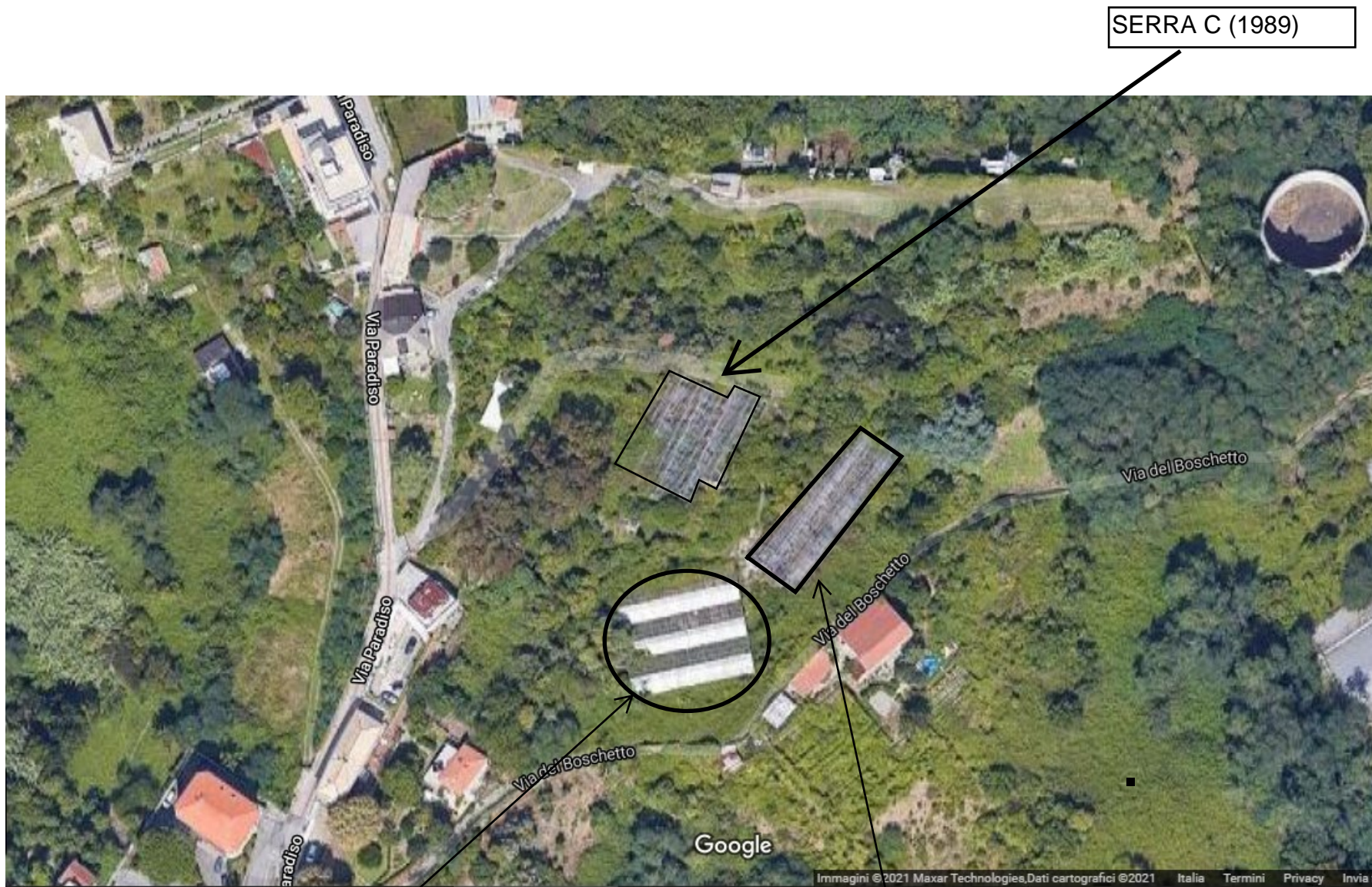
Superficie commerciale =  
0.25\*1.8 QR = 6.75 mq

CANTINA CIV. 15B



Superficie commerciale = 0.2\*67.6 = 13.52 mq

NCT Genova, Sez. 3(C), fg. 73, p. 203 - Via Paradiso 15  
fotogrammetria da Google Maps



SERRA C (1989)

SERRA A (ante 1974)

SERRA B (1974)

**NCT Genova. Sez. 3(C), fg. 73, p. 203 - via Paradiso 15  
(planimetria in scala adattata)**

Posizione schematica Serre A (ante 1974) - B (1974) - C (1989)

