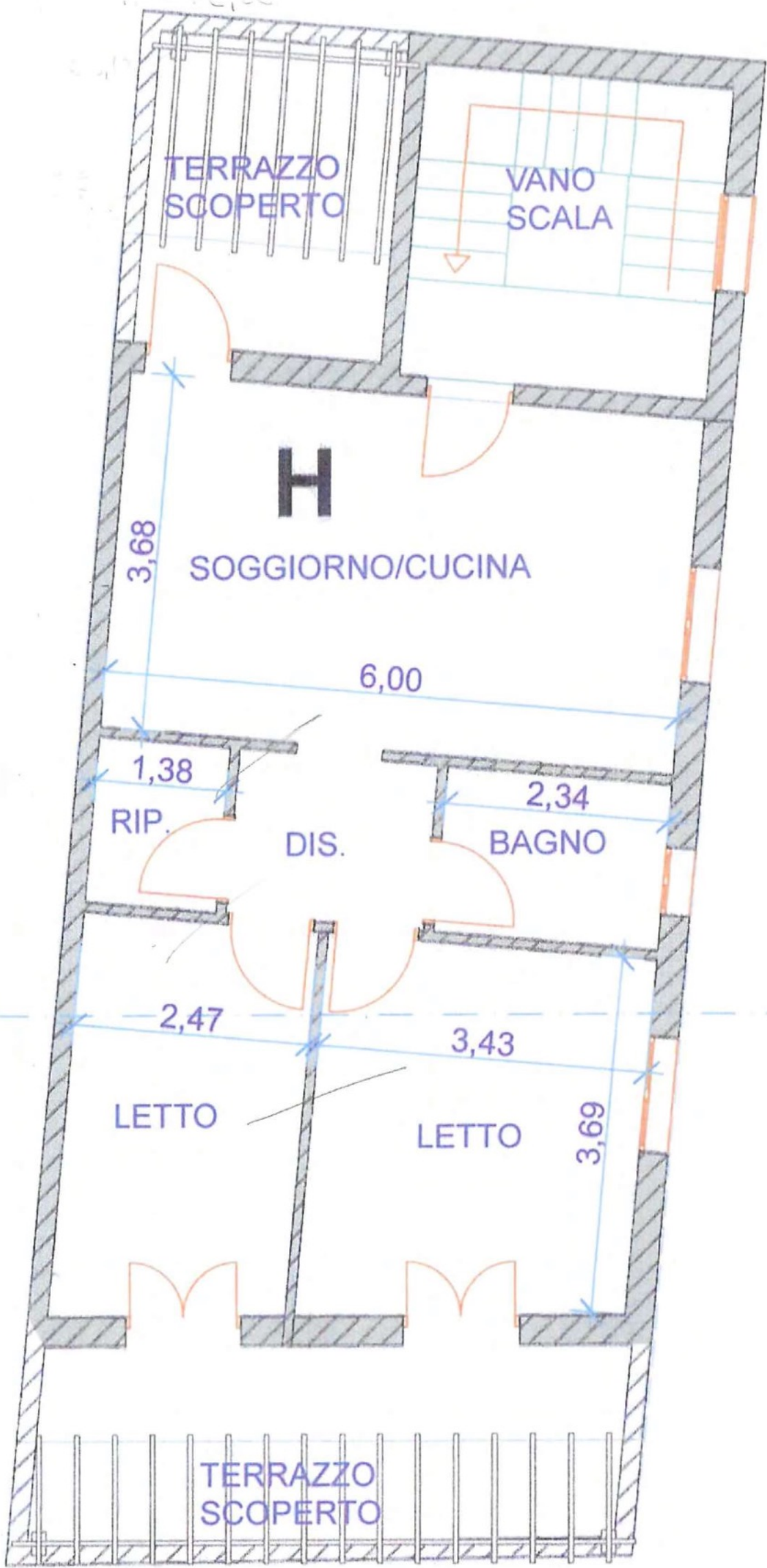
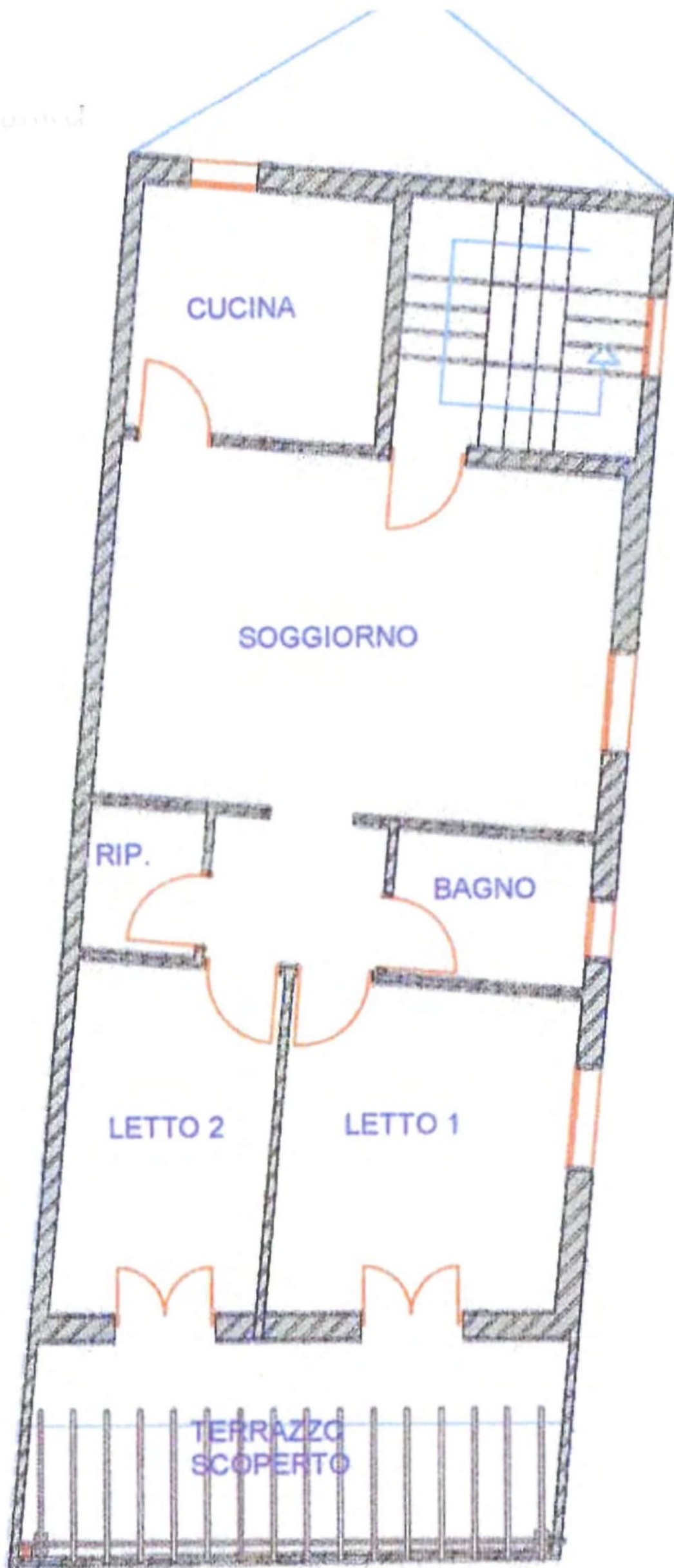


B

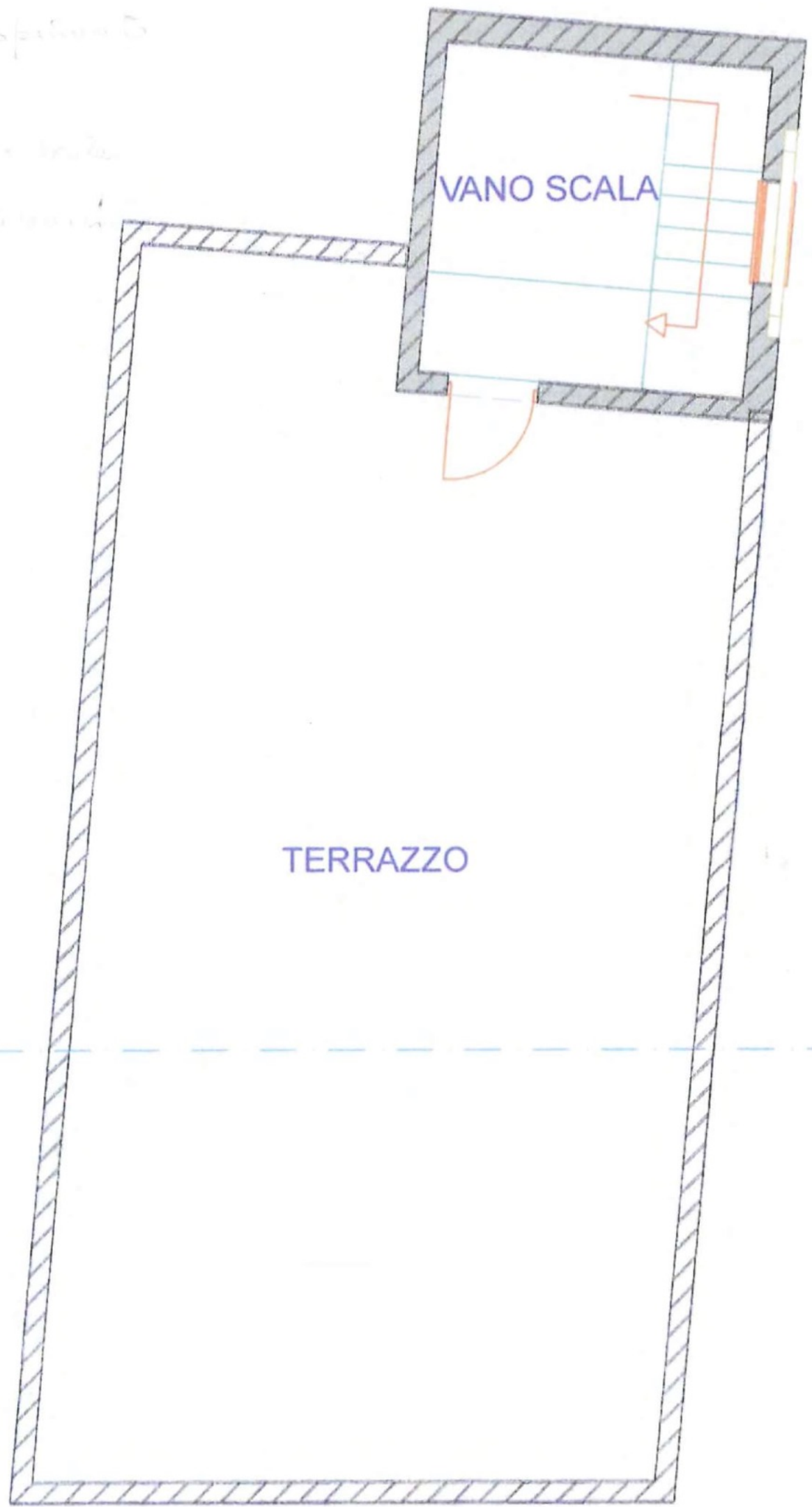
A



Viale Roma  
- Alloggio di 2° piano



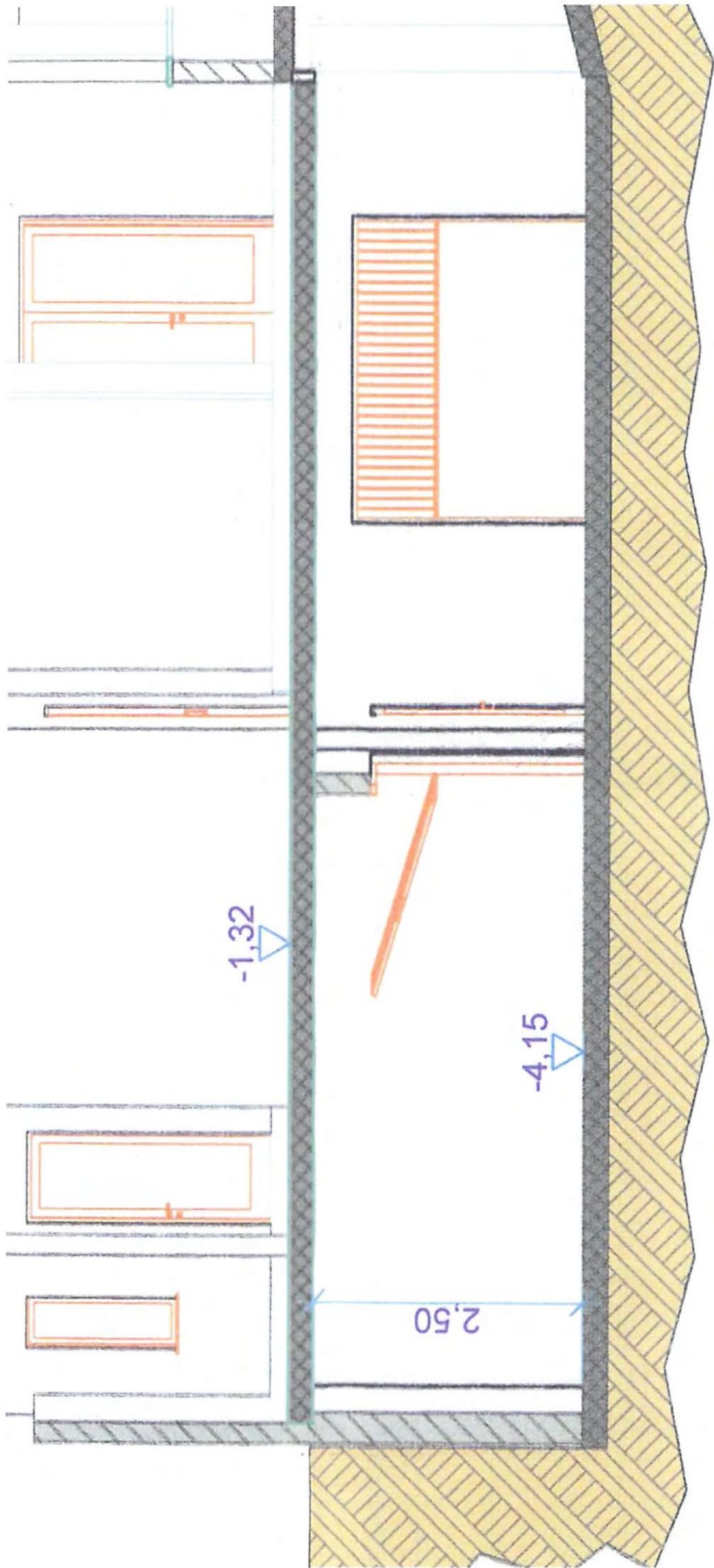
- abbinare la scala
- notare l'angolo
- notare la scala/risposta
- notare la scala e la scala
- notare la scala e la scala

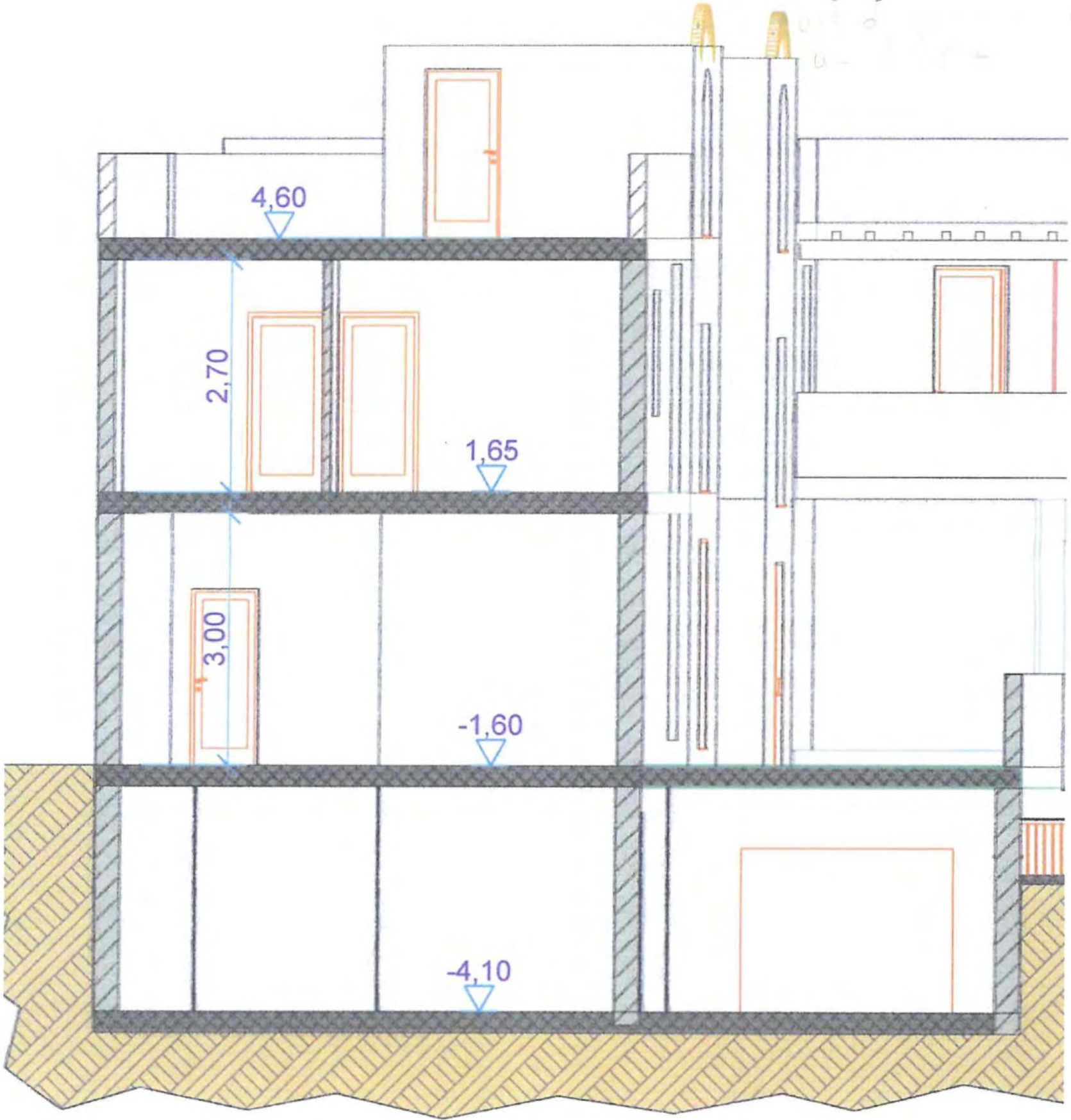


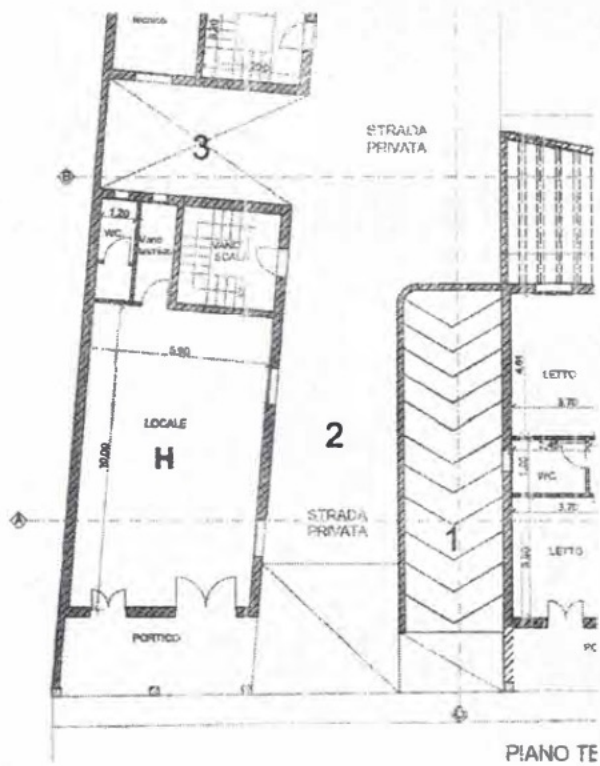
VANO SCALA

TERRAZZO

A







- 1 Superficie rampa carrabile m. (3,30 x 11,00) = mq. 36,30  
 Usufruiscono della rampa n. 8 proprietari
- 2 Superficie strada privata laterale m. (4,00 x 16,00) = mq. 64,00  
 Usufruiscono della strada privata 8 proprietari
- 3 Spazio scoperto comune n.(3,60x6,00/2)= mq. 10,80  
 Usufruiscono dello spazio scoperto 8 proprietari