

RILIEVO FOTOGRAFICO



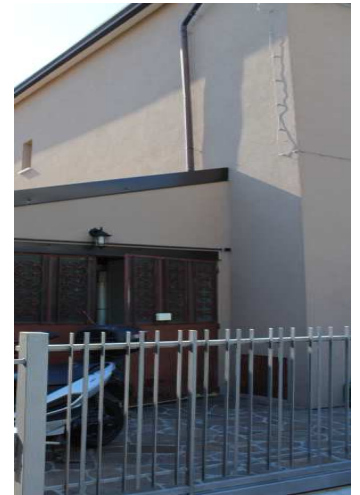
1 – Via Rovigo



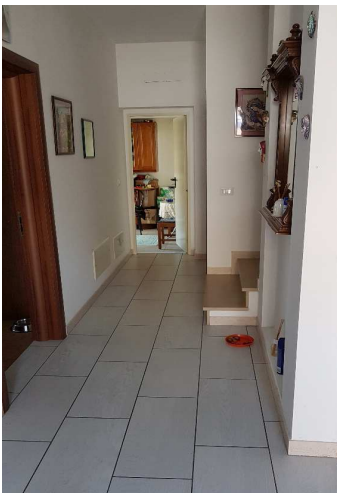
2 – Prospetto principale bifamiliare



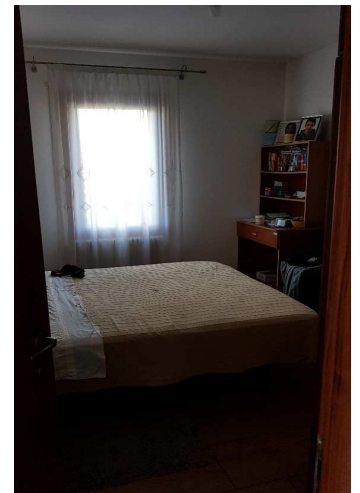
3 – Prospetto laterale bifamiliare



4- Riposiglio



5 – Ingresso- disimpegno PT

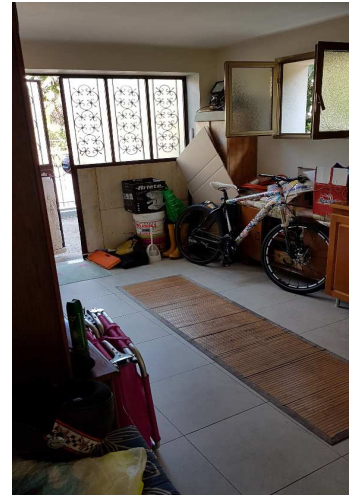


6 – Camera al PT





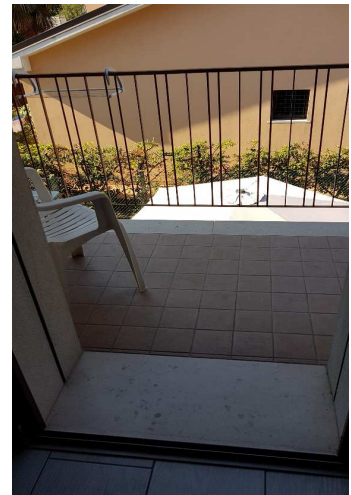
7 – Bagno PT



8 – Ripostiglio PT



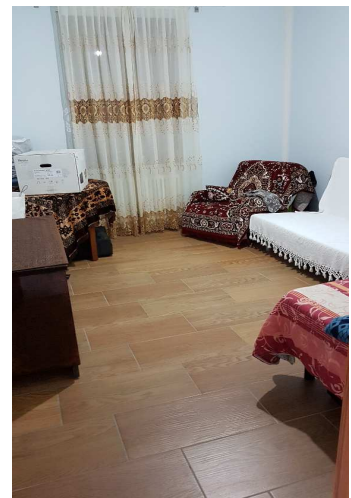
9 – Scale al P1



10 – Terrazza P1



11 – Camera P1



12 – Camera P1





13 – Bagno P1



14 – Isolamento del sottotetto

