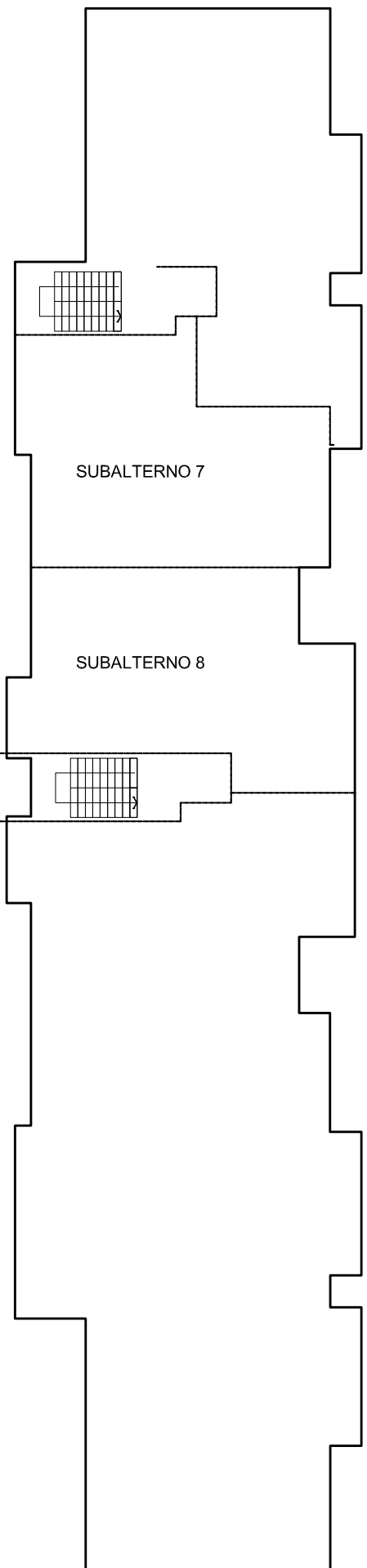
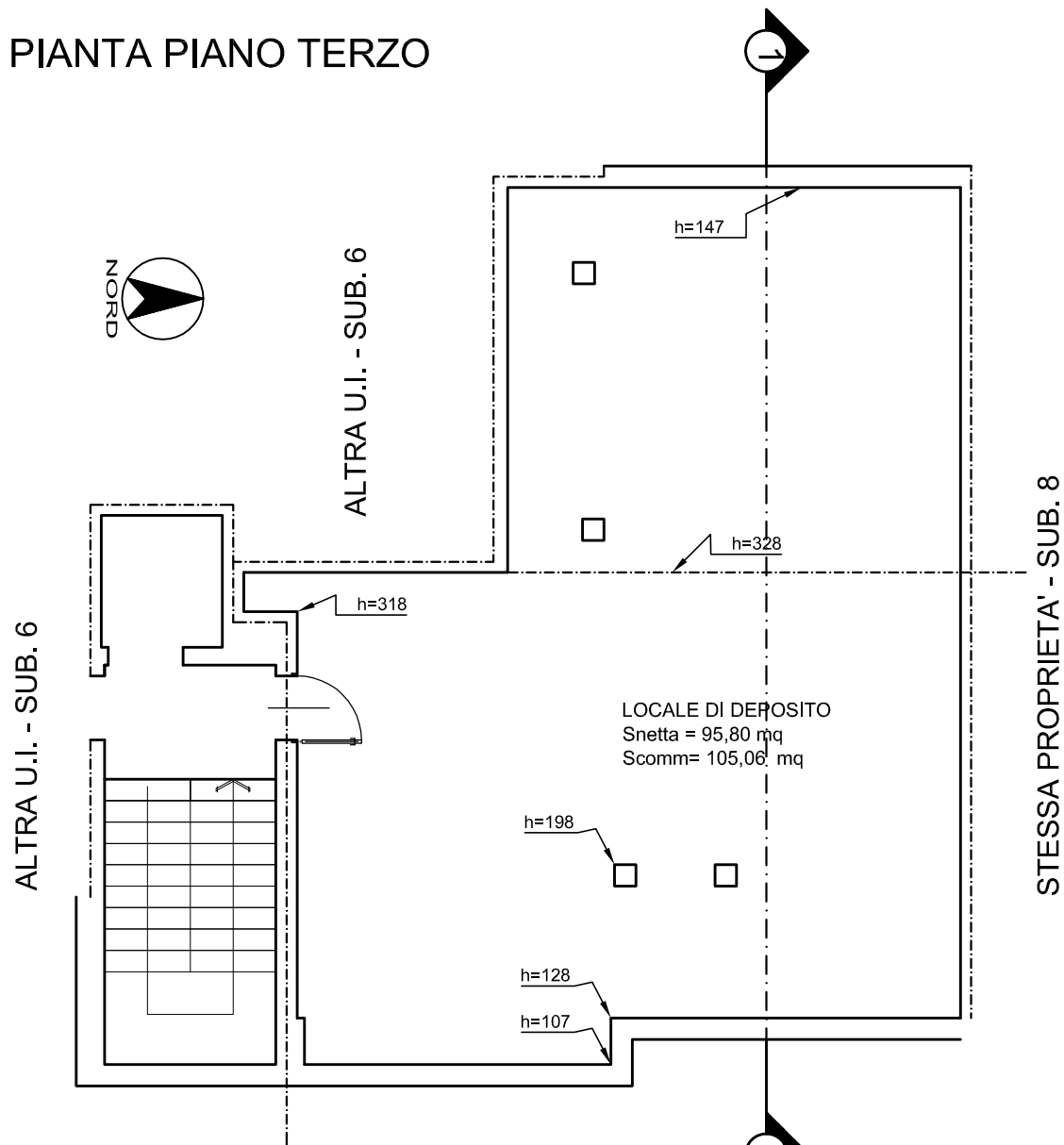


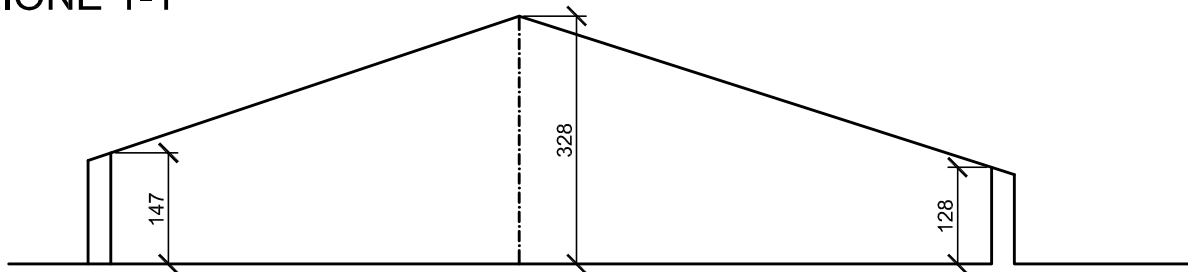
Magazzini al piano terzo sito in Cameri - Via Pietro Micca 4/6
distinti al foglio 40 mappale 1751 subalterni 7 e 8



PIANTA PIANO TERZO



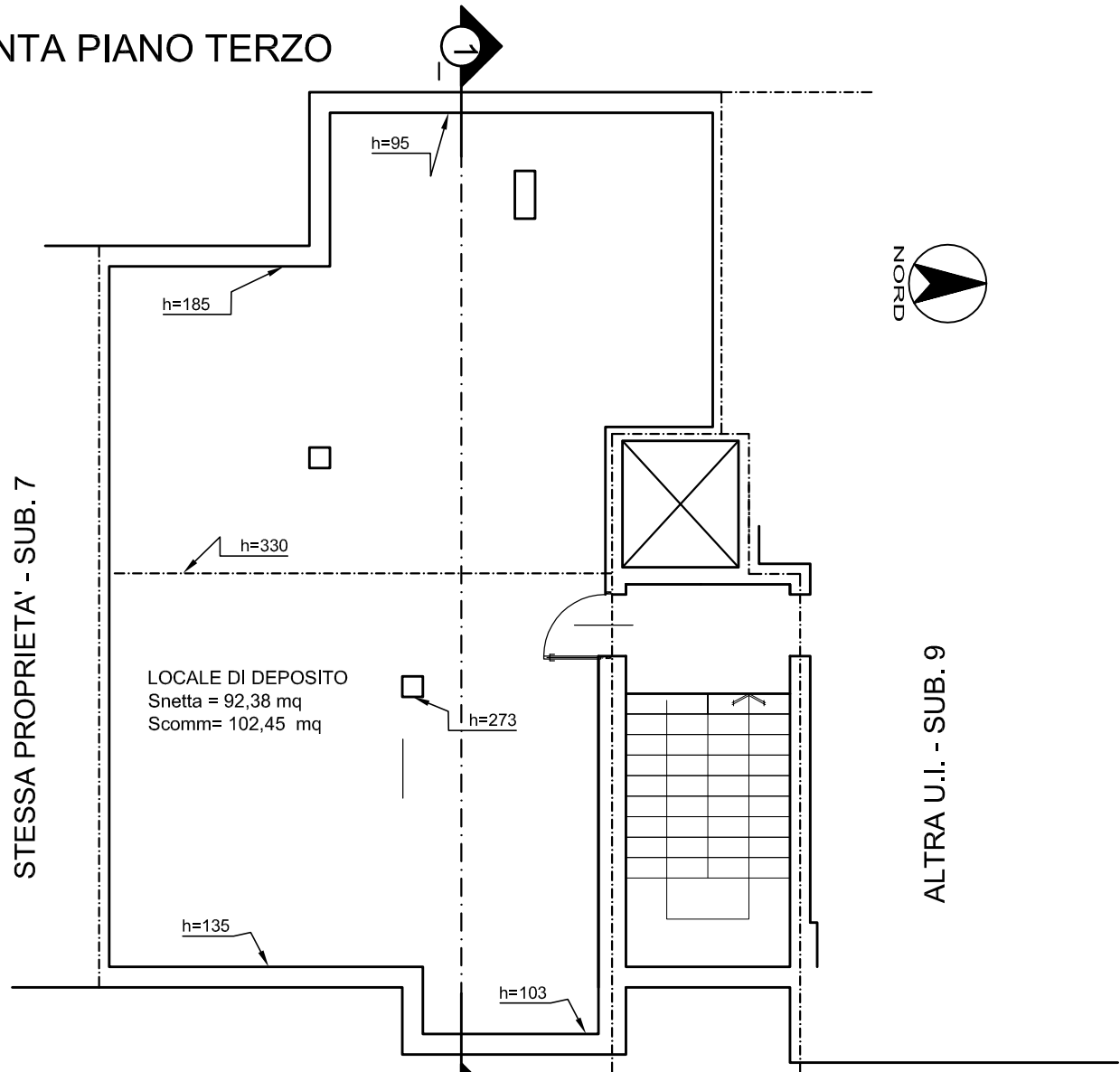
SEZIONE 1-1



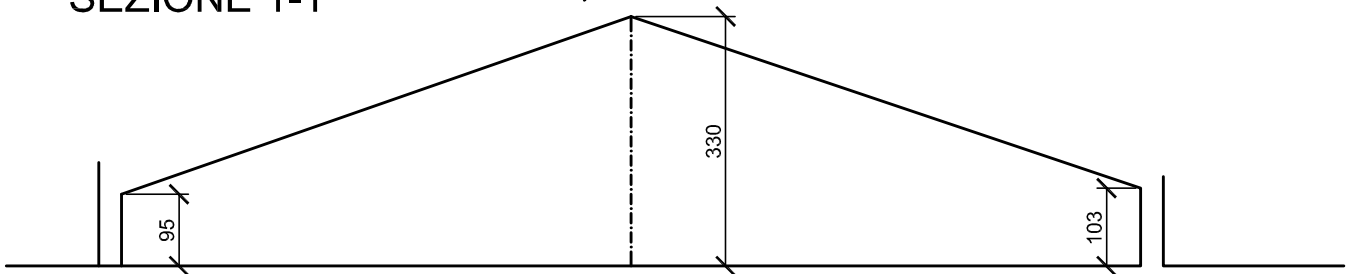
CALCOLO ALTEZZA MEDIA

$$H_m = (30,89 \times 2,175 + 30,62 \times 2,28 + 34,29 \times 2,375) / 95,80 = 2,28 \text{ m}$$

PIANTA PIANO TERZO



SEZIONE 1-1



CALCOLO ALTEZZA MEDIA

$$H_m = (2,52 \times 1,19 + 40,96 \times 2,325 + 32,60 \times 2,575 + 3,70 \times 2,925 + 12,60 \times 1,40) / 92,38 = 2,28 \text{ m}$$