

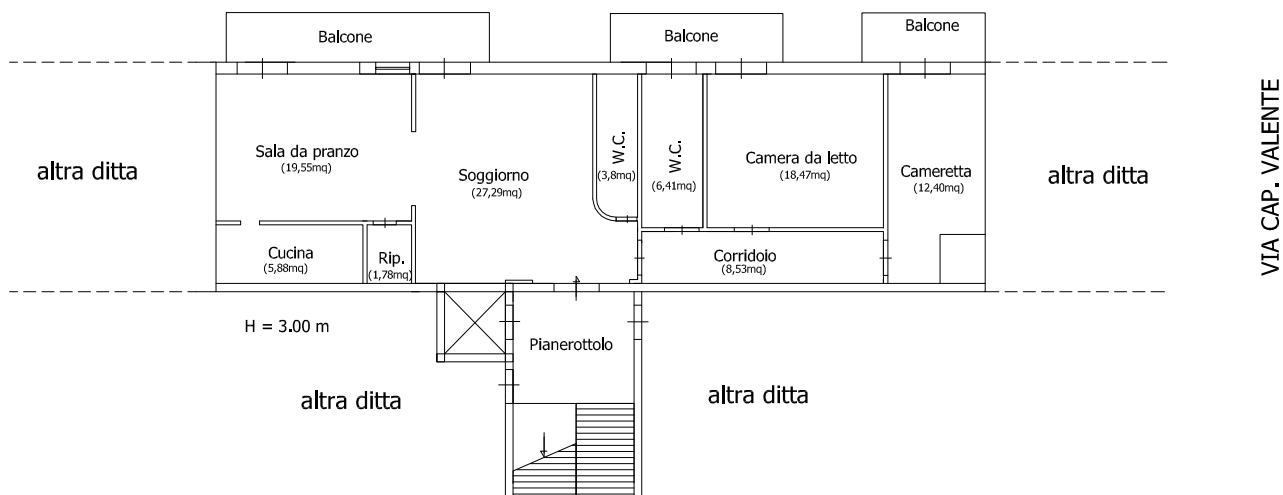
PLANIMETRIA STATO ATTUALE IMMOBILE

F.143 P.LLA 913 SUB.12

SUPERFICIE COMMERCIALE = 127,70 mq

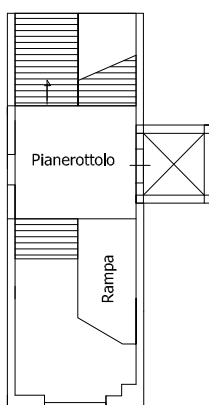
SUPERFICIE UTILE NETTA = 104 mq

MANFREDONIA(FG) - VIA TRIBUNA



MANFREDONIA(FG)

Pianta 2° PIANO, VIA TRIBUNA N.48



Pianta PIANO TERRA, VIA TRIBUNA N.48

ORIENTAMENTO



SCALA 1:200