

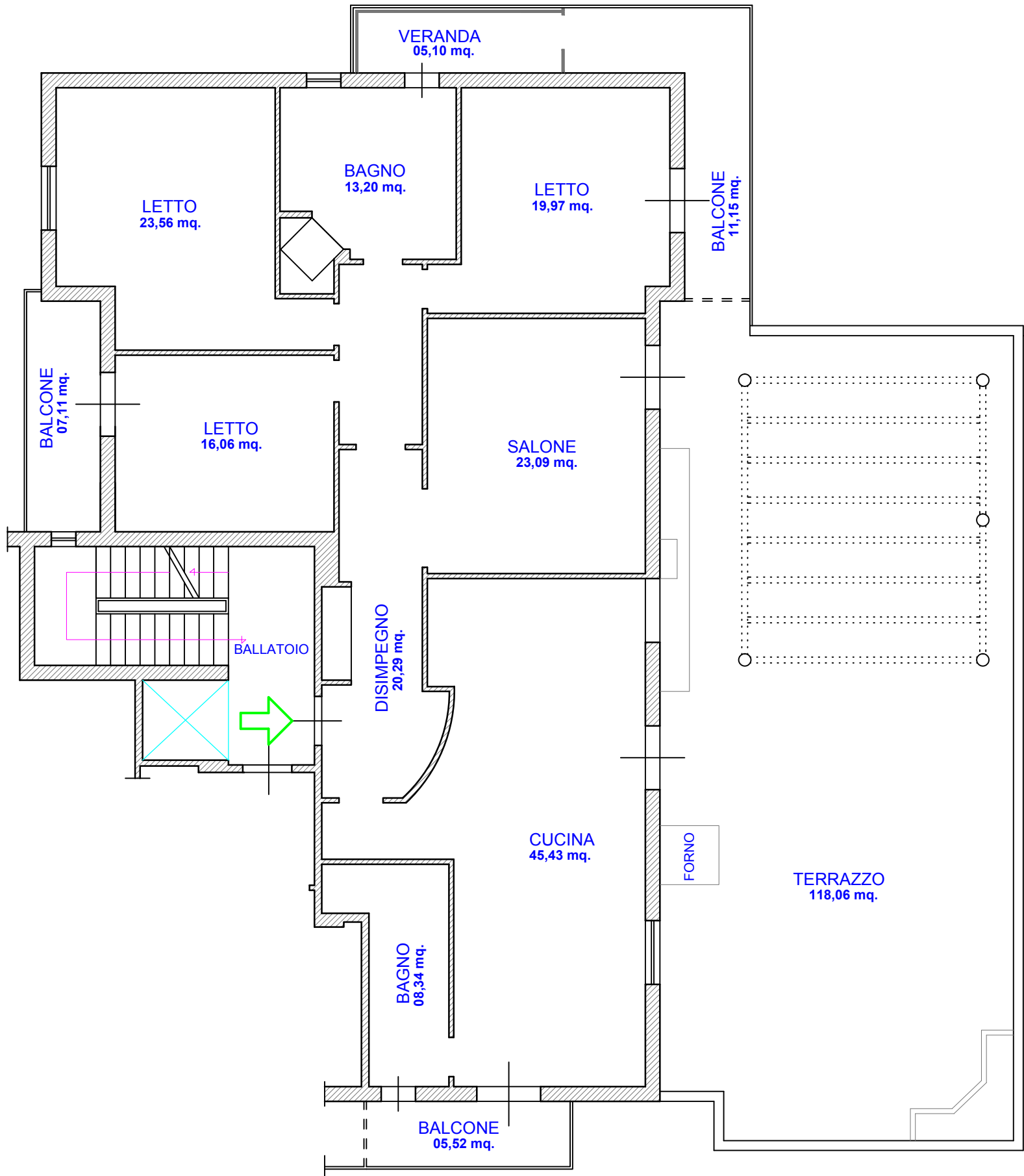
--- ELABORATO GRAFICO ---

- Comune di SCAFATI - Via F. BONADUCE civ. 42 - Trav. di Via PASSANTI -
- PROPRIETA' - 100 % - ABITAZIONE. - A/02 - F.17 - P.173 - S.208 - piano Primo -

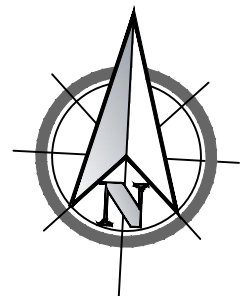
--- PIANO PRIMO ---

--- H=2,80 mt. ---

CORTE COMUNE



VIA F. BONADUCE



scala rapp. 1:100