















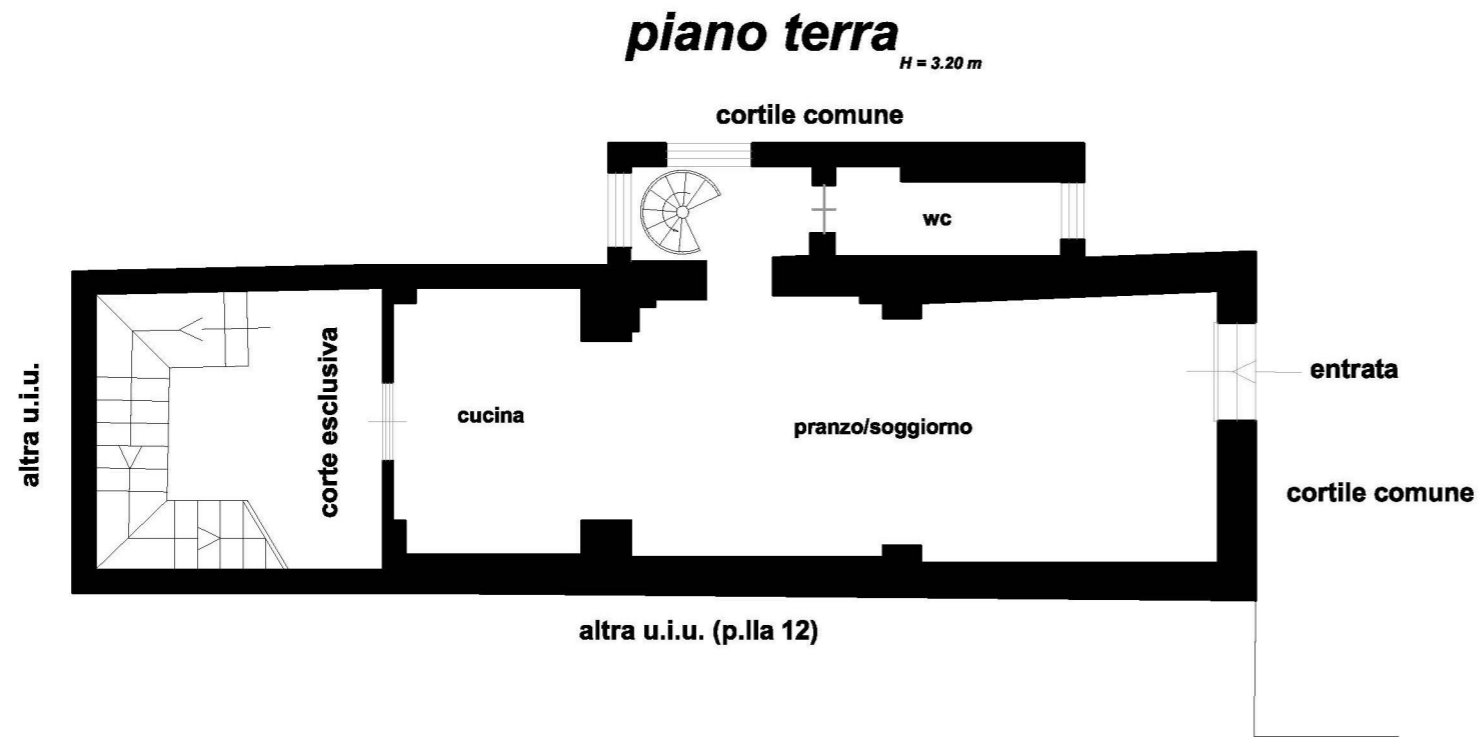




LOTTO UNICO

_unità immobiliare appartamento | piano terra e piano primo | foglio 9 p.la 8

_planimetria immobile | via piave civ.76



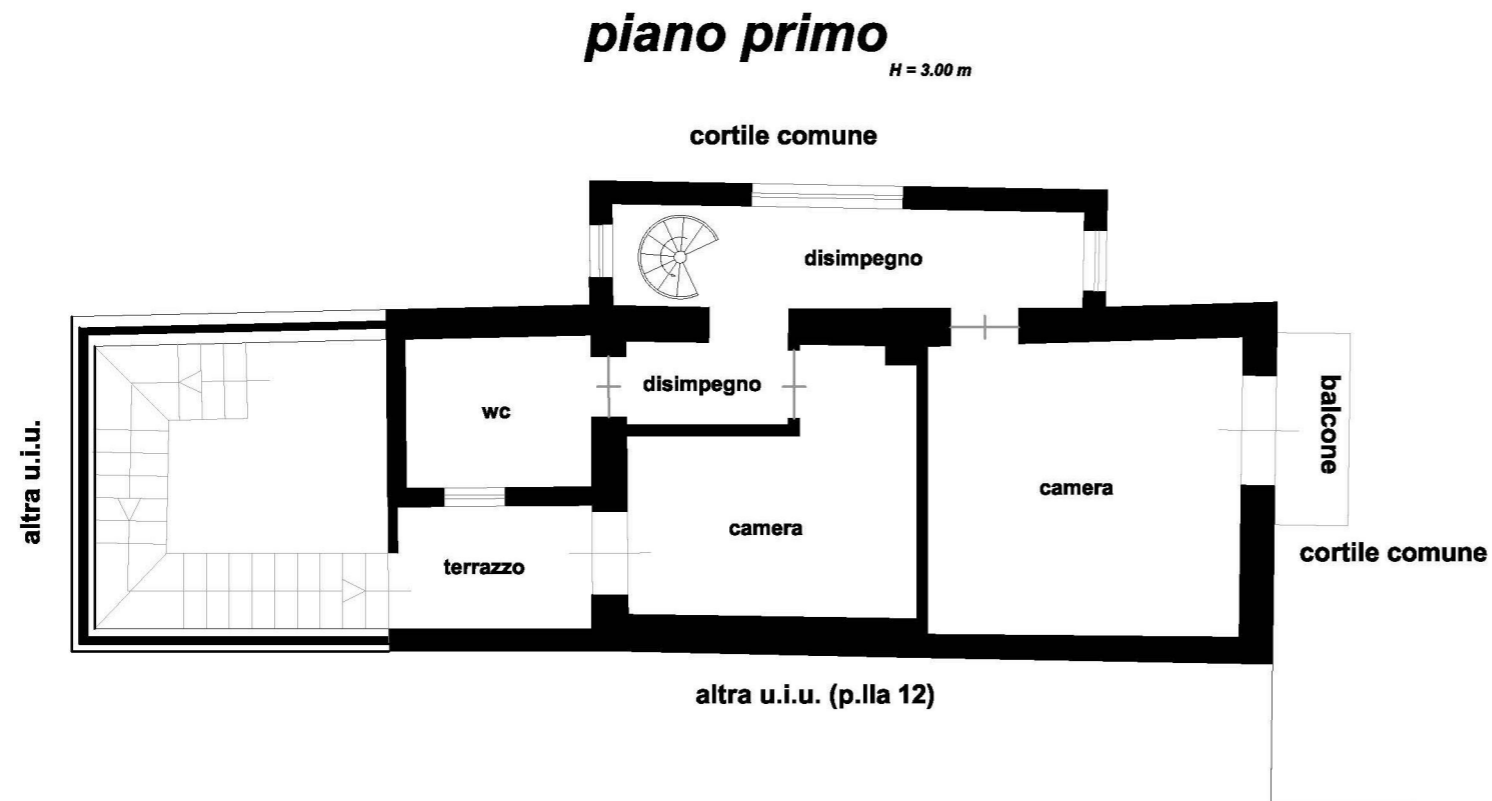
Sup_{lorda} = 116,50 mq

Sup_{utile} = 87,40 mq

Sup_{nr(corte)} = 14,00 mq

Sup_{nr(balcone)} = 2,60 mq

Sup_{nr(terrazzo)} = 4,00 mq



_Il Tecnico
dott.ing.Giuseppe PADOVANO





