



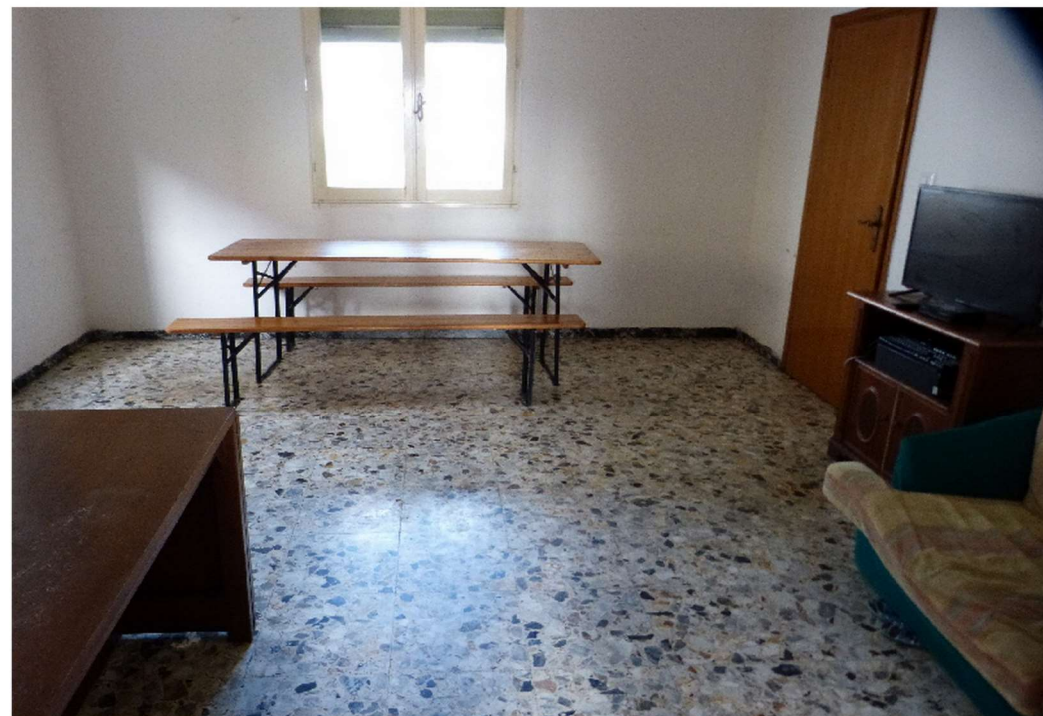
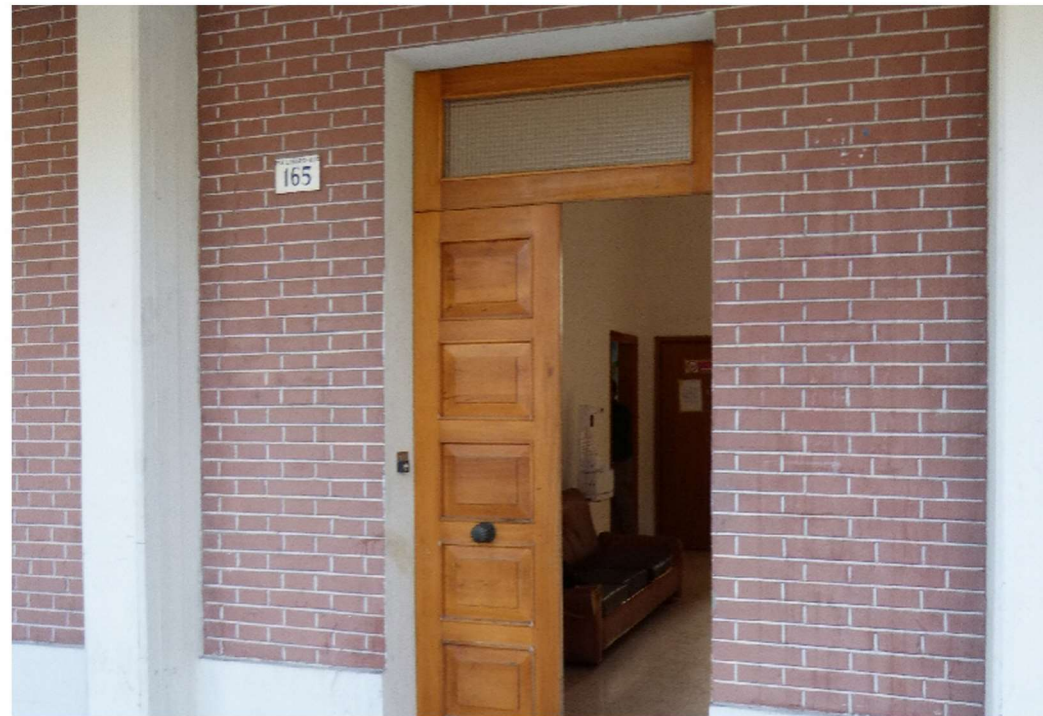
vista da via Linaro



confine lato sud area esterna

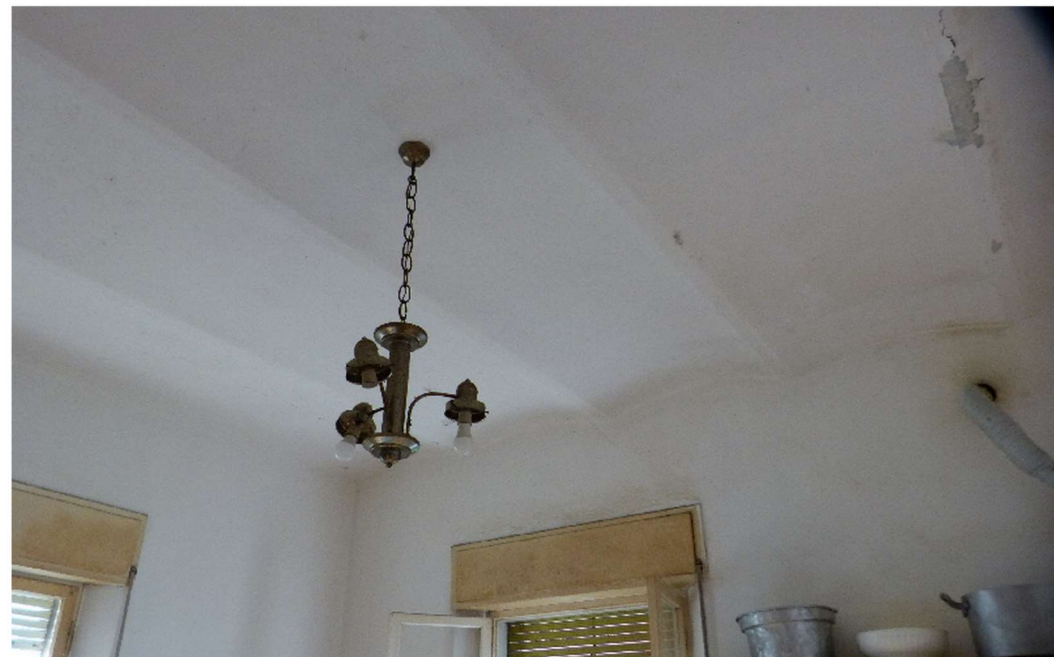


confine lato nord-area esterna





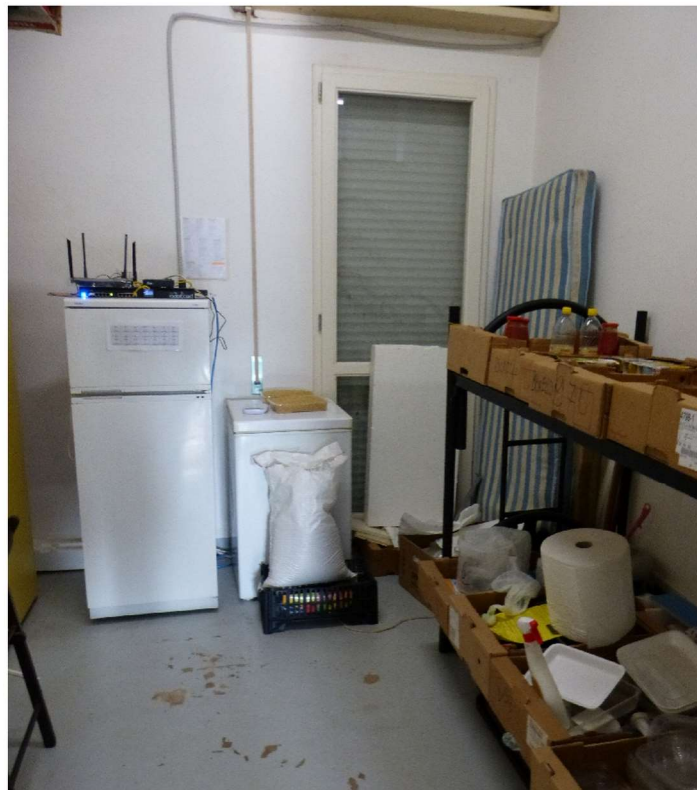
locale cucina p.terra



vista soffitto a voltine, locali p. terra



vista verso locale sottoscale

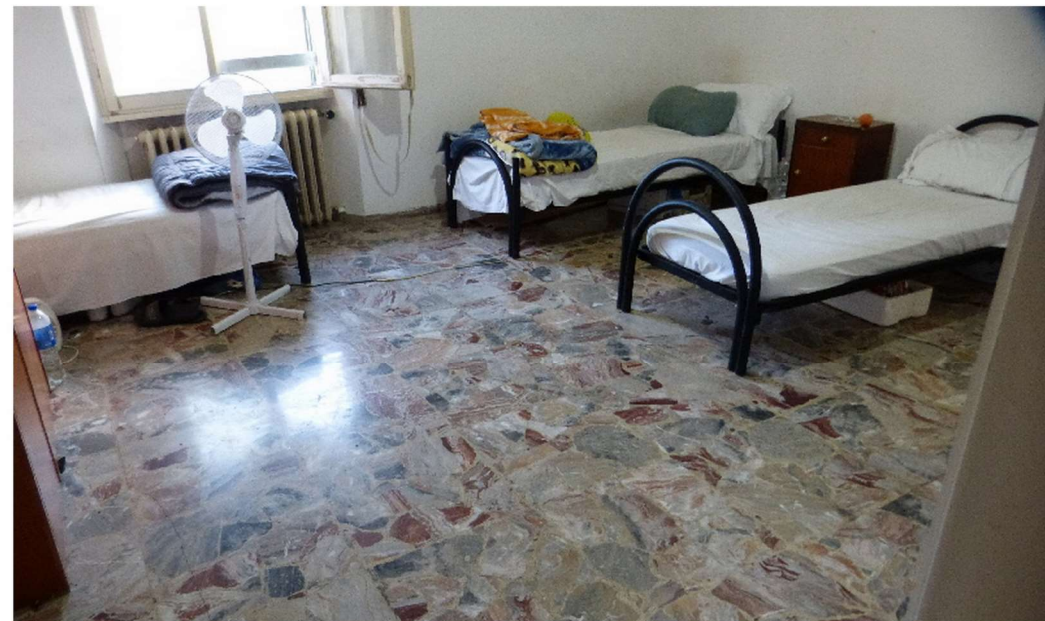


locale dispensa

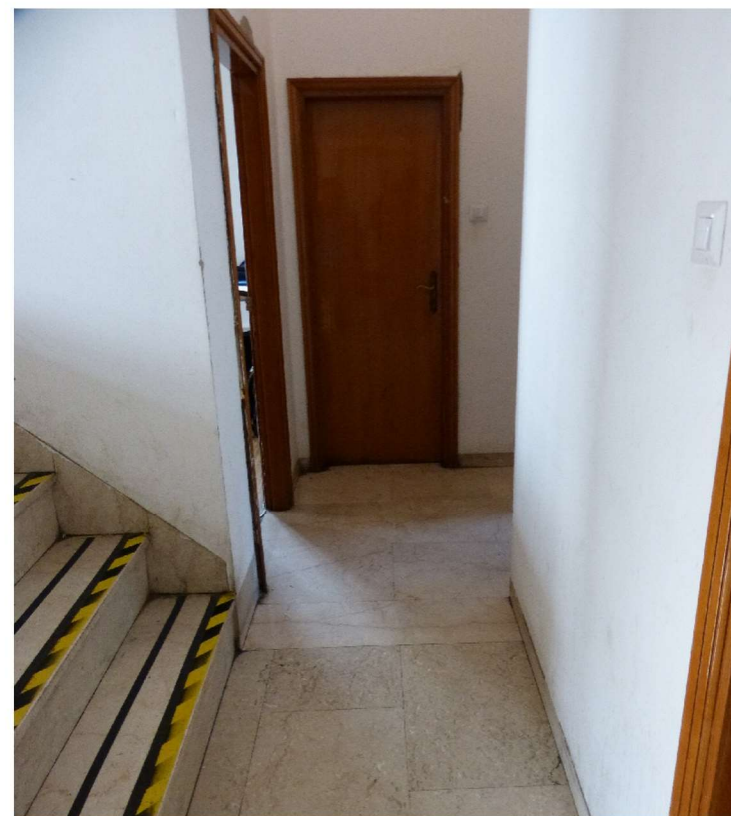
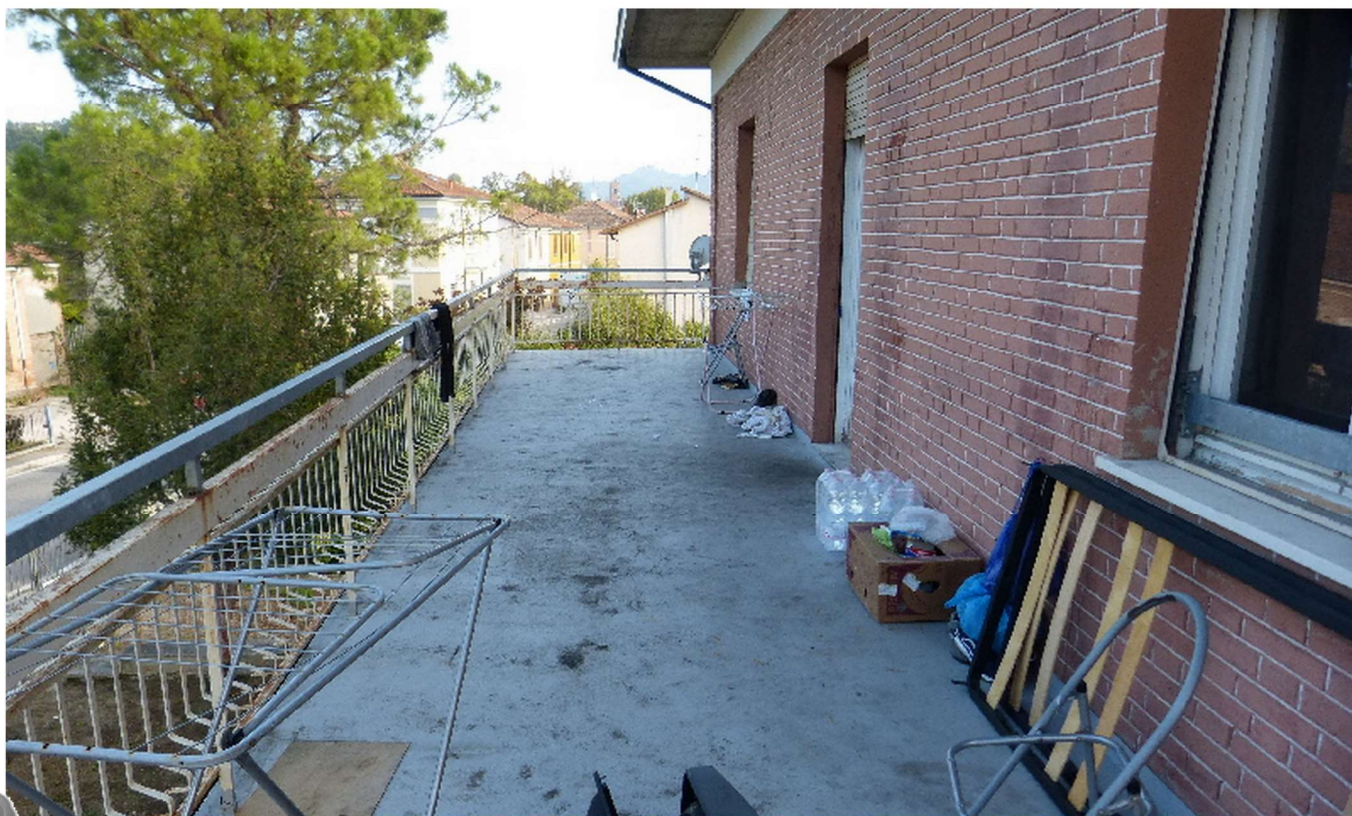


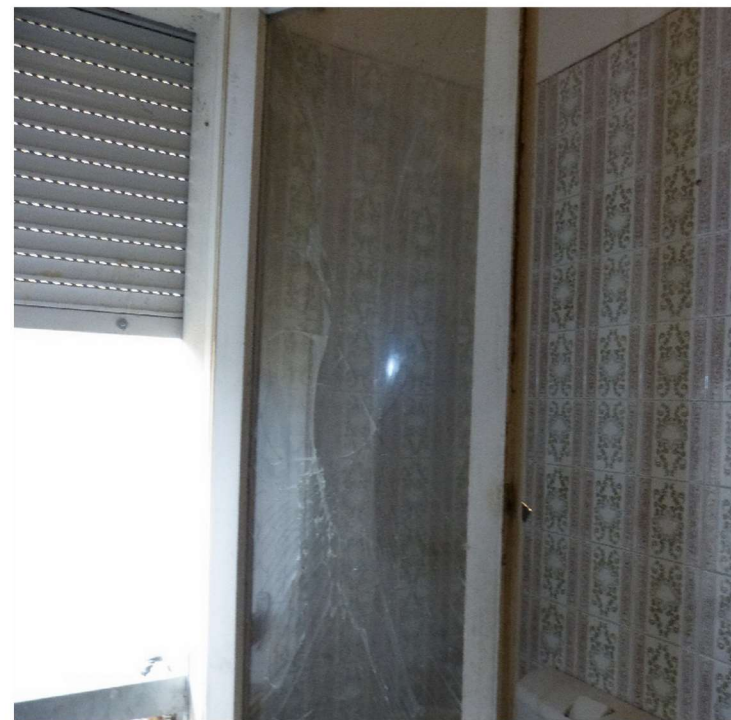
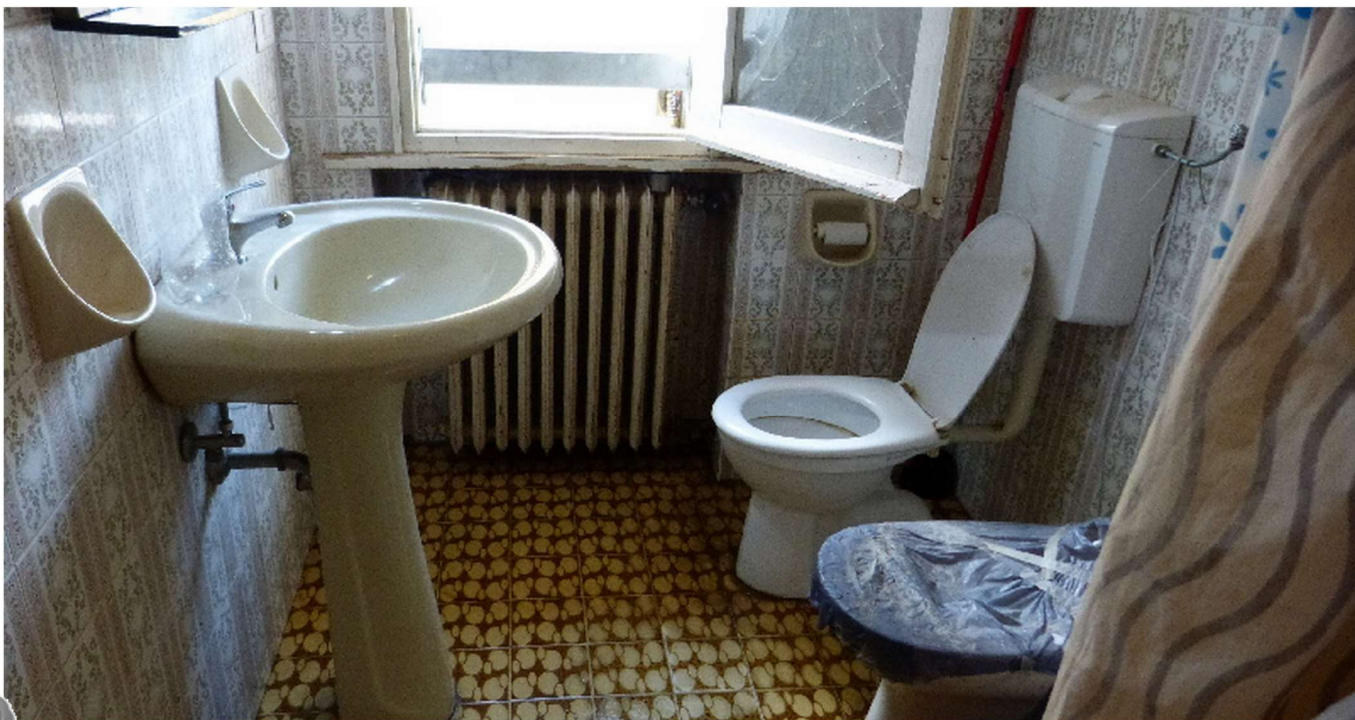
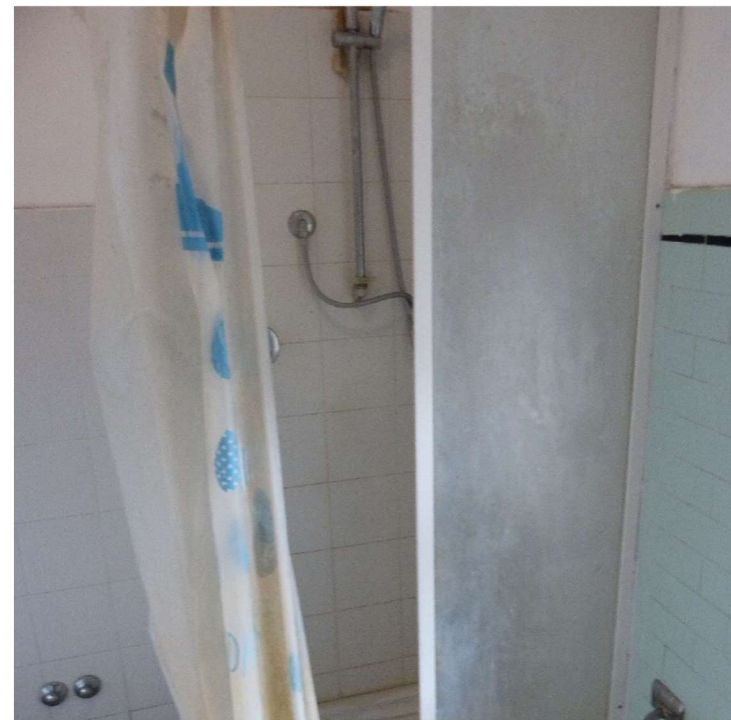
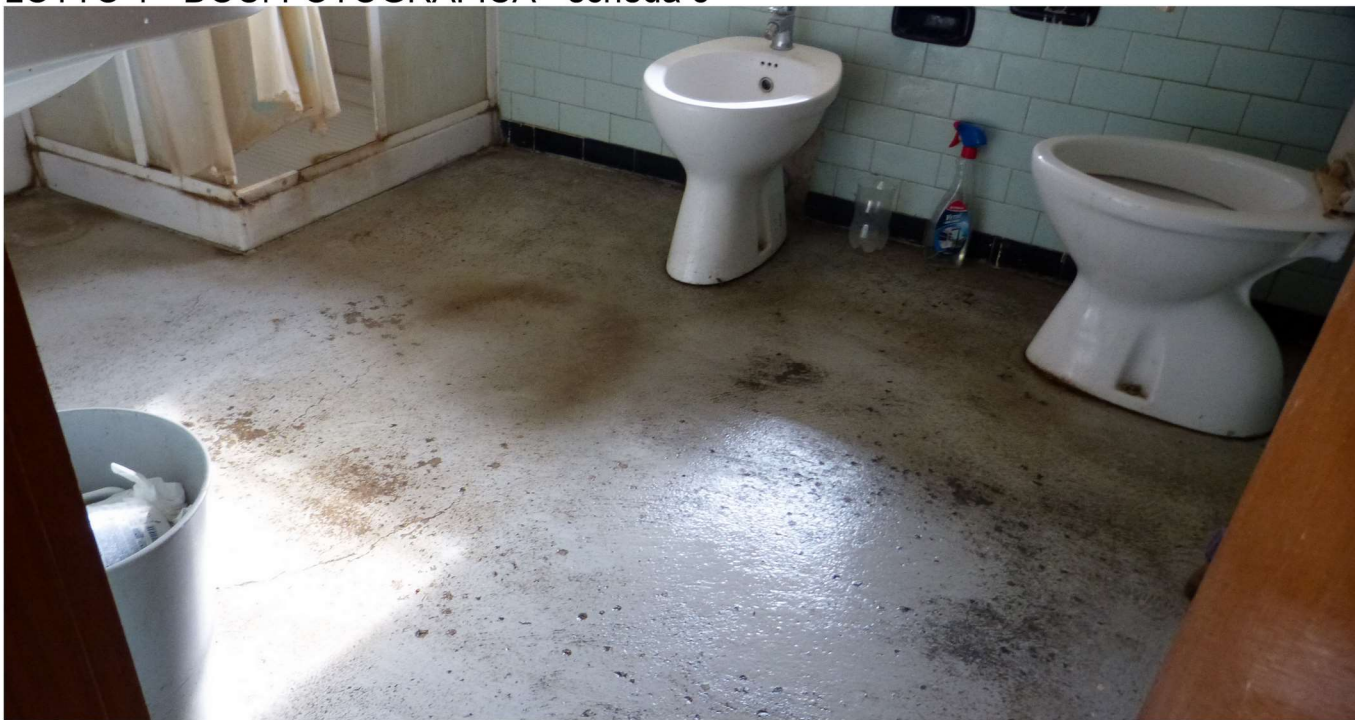
bagno p. terra





interni piano primo







ingresso



pavimentazione esterna



retro , ingresso ai locali al piano seminterrato /terra



viste interne locali al piano seminterrato , cantine



vista vs posizione originaria scala in legno



vista magazzino



particolare muratura e degrado