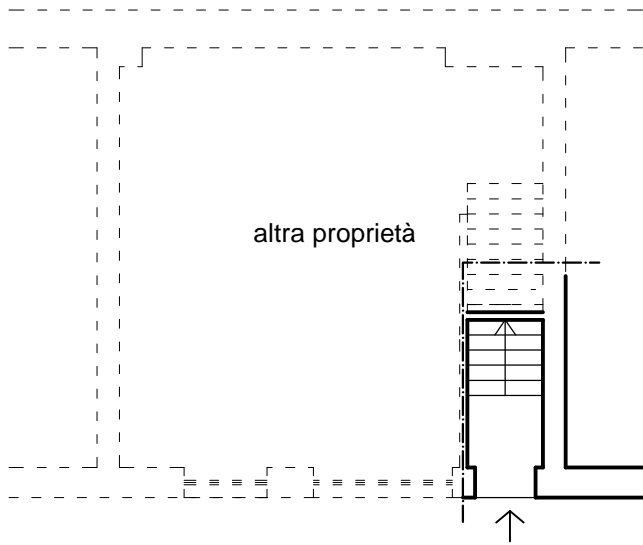


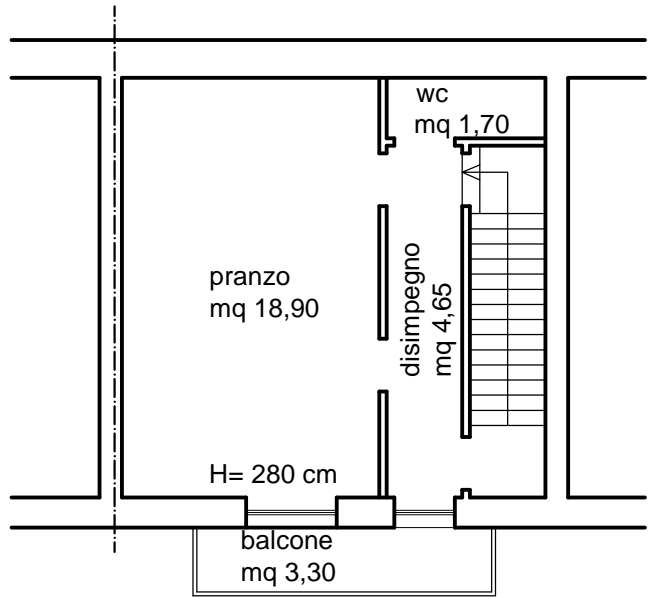
***All. C - Planimetrie***

*Pianta piano terra*

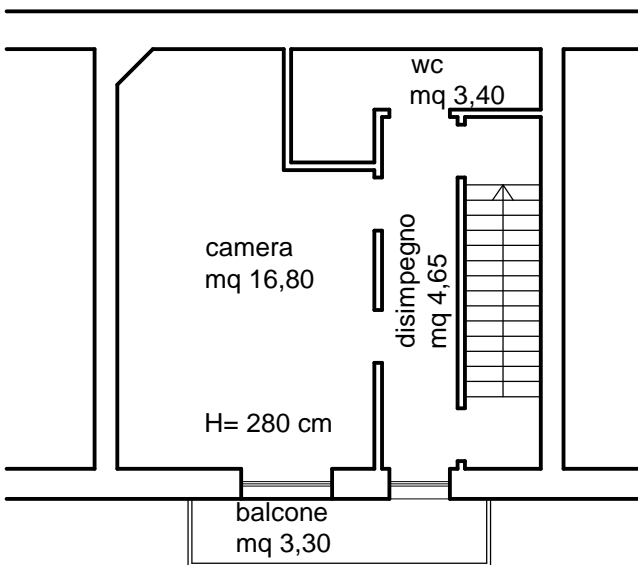


*Via Roma - San Salvo*

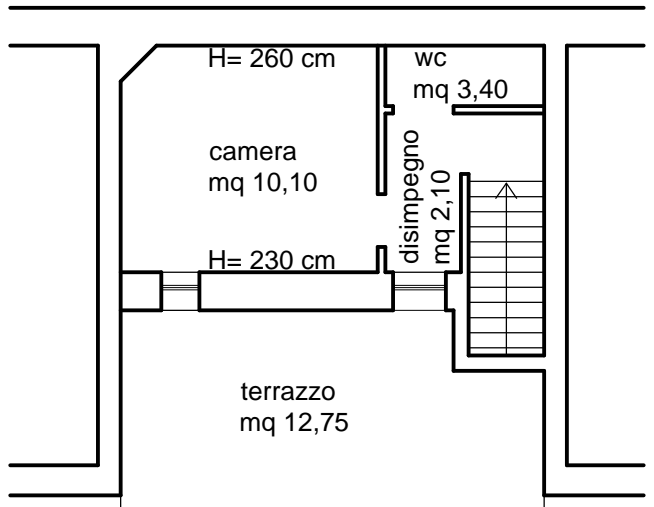
*Pianta piano primo*



*Pianta piano secondo*



*Pianta piano terzo (sottotetto)*

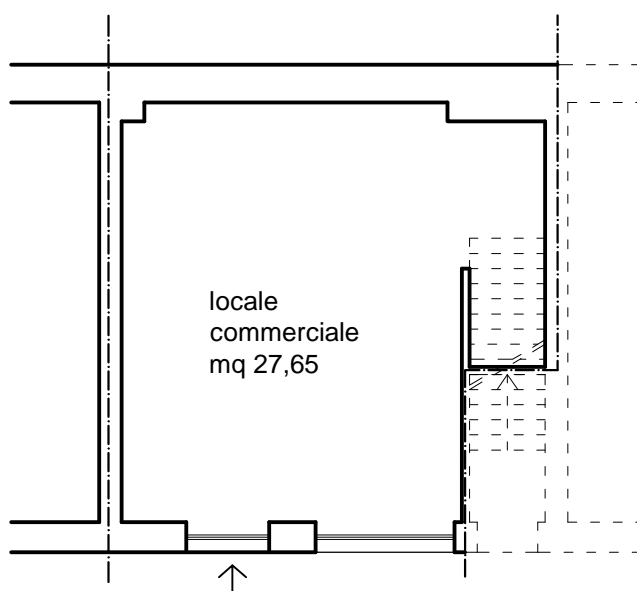


Superficie Utile complessiva mq 64,70  
Superficie Lorda complessiva mq 70,00

**LOTTO n° 3 - Comune di San Salvo, Fg. 7 part. 762 sub 8**

**Scala 1:200**

***Pianta piano terra***



Superficie Utile complessiva mq 27,65  
Superficie Lorda complessiva mq 30,00