

Tribunale Ordinario di Velletri
Sezione Fallimentare
Fall.to n°109/2019 – G.I. Dott.ssa Francesca Aratari
“COMETAL Srl ”
Sentenza del 18 Dicembre 2019 N° 108/2019
Curatore Dott. Giuseppe Amendola

All. 10

ALLEGATO 10

Planimetria grafico rilievo stato attuale singoli lotti

Tribunale Ordinario di Velletri
Sezione Fallimentare
Fall.to n°109/2019 – G.I. Dott.ssa Francesca Aratari
“COMETAL Srl ”

Sentenza del 18 Dicembre 2019 N° 108/2019
Curatore Dott. Giuseppe Amendola

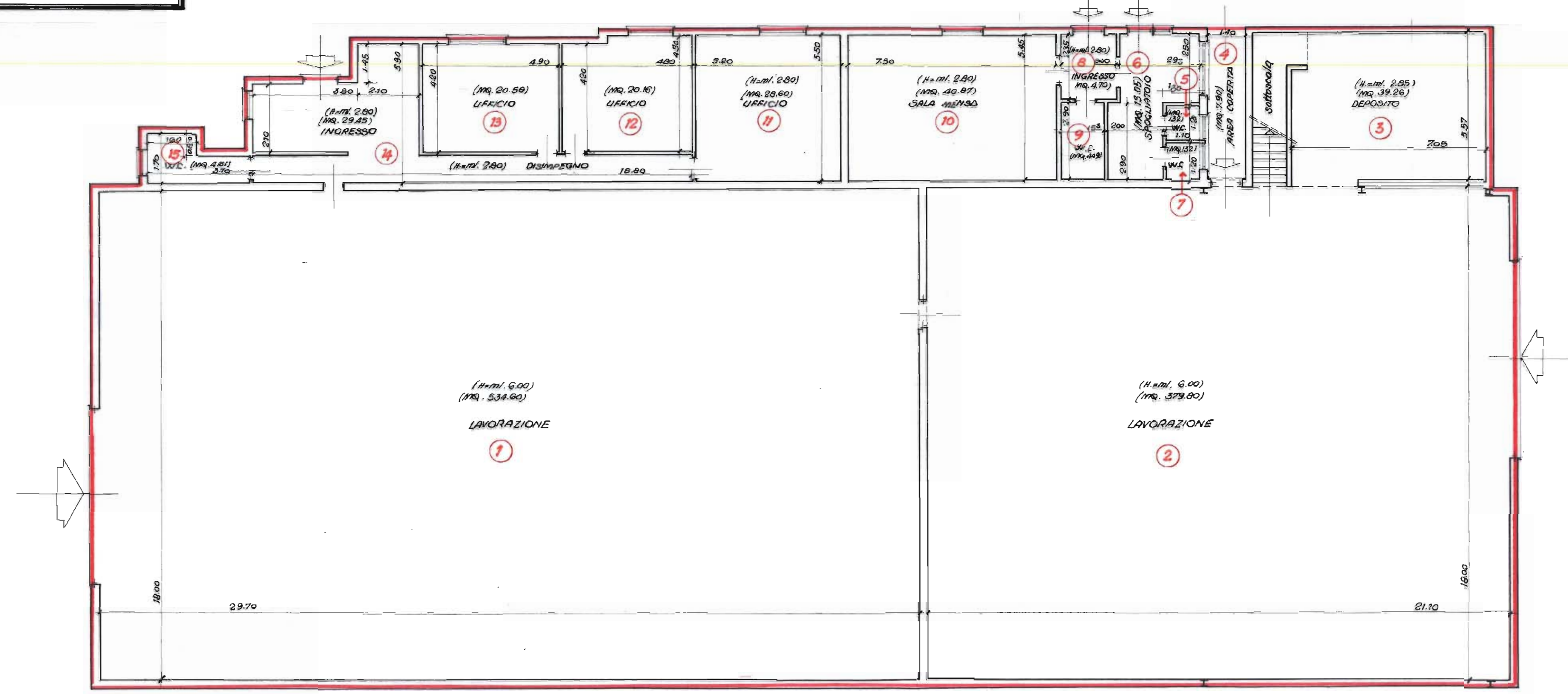
Lotto 11
Bene a)
Bene b)
Bene c)
Bene d)
Bene e)
All. 10.01

ALLEGATO 10.01

Planimetria grafico rilievo
stato attuale singoli lotti
Lotto 11

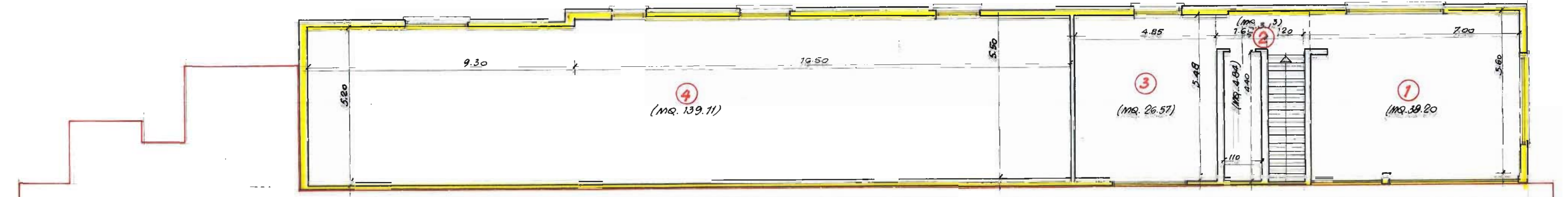
SUBALTERNO 5 "Piano Terra"
Superficie utile calpestabile

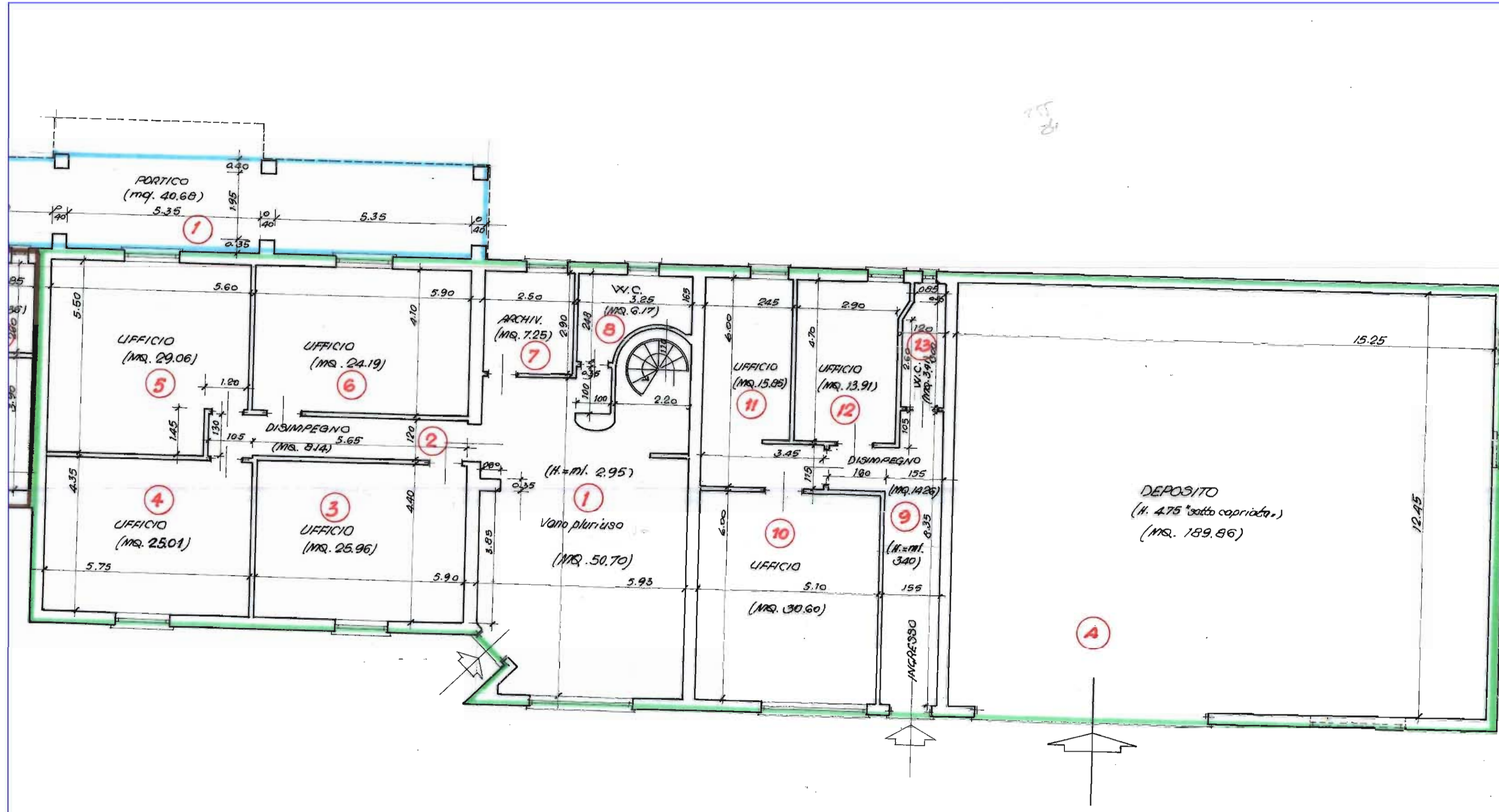
1	mq. 534.60	
2	mq. 379.80	
3	mq. 39.26	
4	mq. 7.90	mq. 961.30
5	mq. 1.32	
6	mq. 13.05	
7	mq. 1.32	
8	mq. 4.70	
9	mq. 4.49	
10	mq. 40.87	
11	mq. 28.80	
12	mq. 20.18	
13	mq. 20.58	
14	mq. 29.45	
15	mq. 4.61	mq. 169.15
TOTALE mq. 1130.51		mq. 1130.51



SUBALTERNO 6 "Piano Primo"
Superficie utile calpestabile

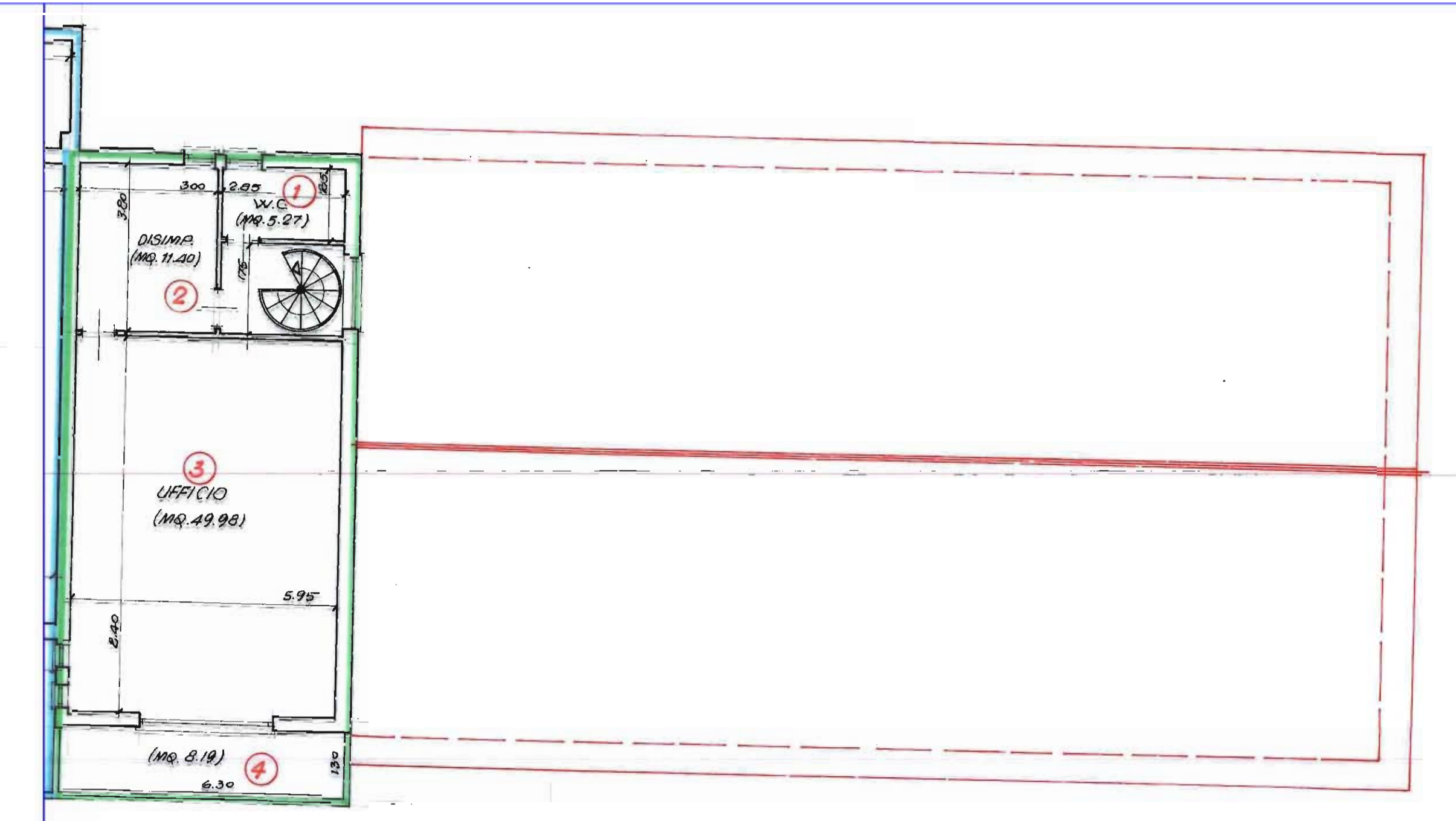
1	mq. 38.20	
2	mq. 3.13	
3	mq. 26.57	
4	mq. 139.11	
TOTALE mq. 207.01		





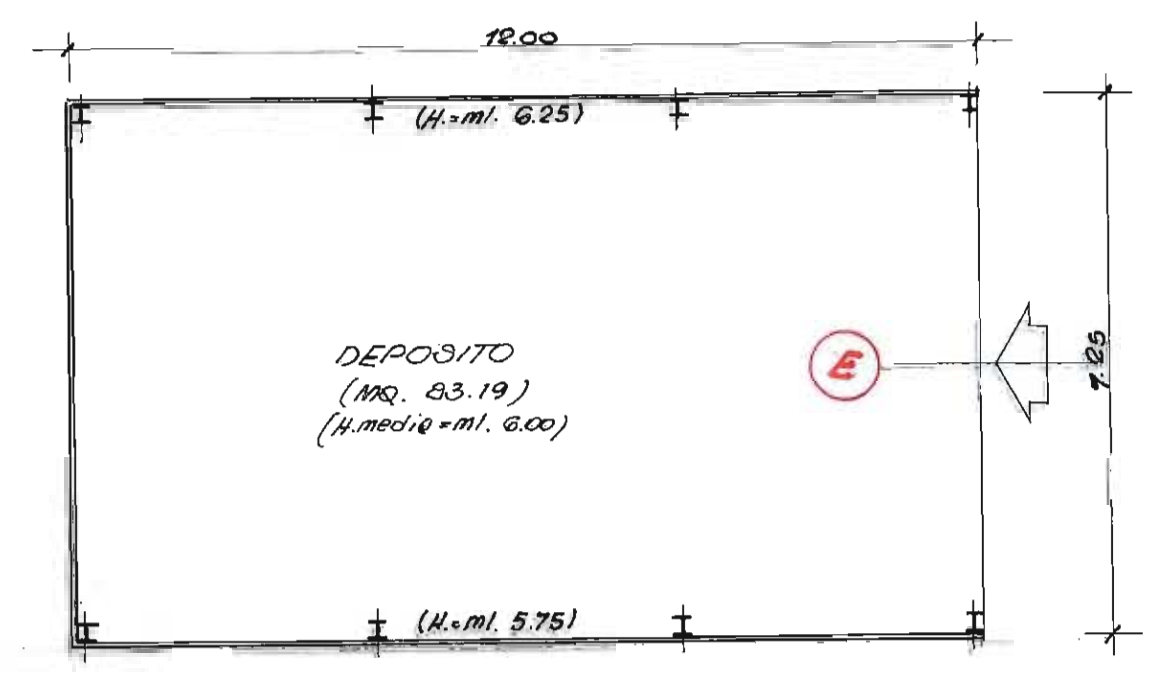
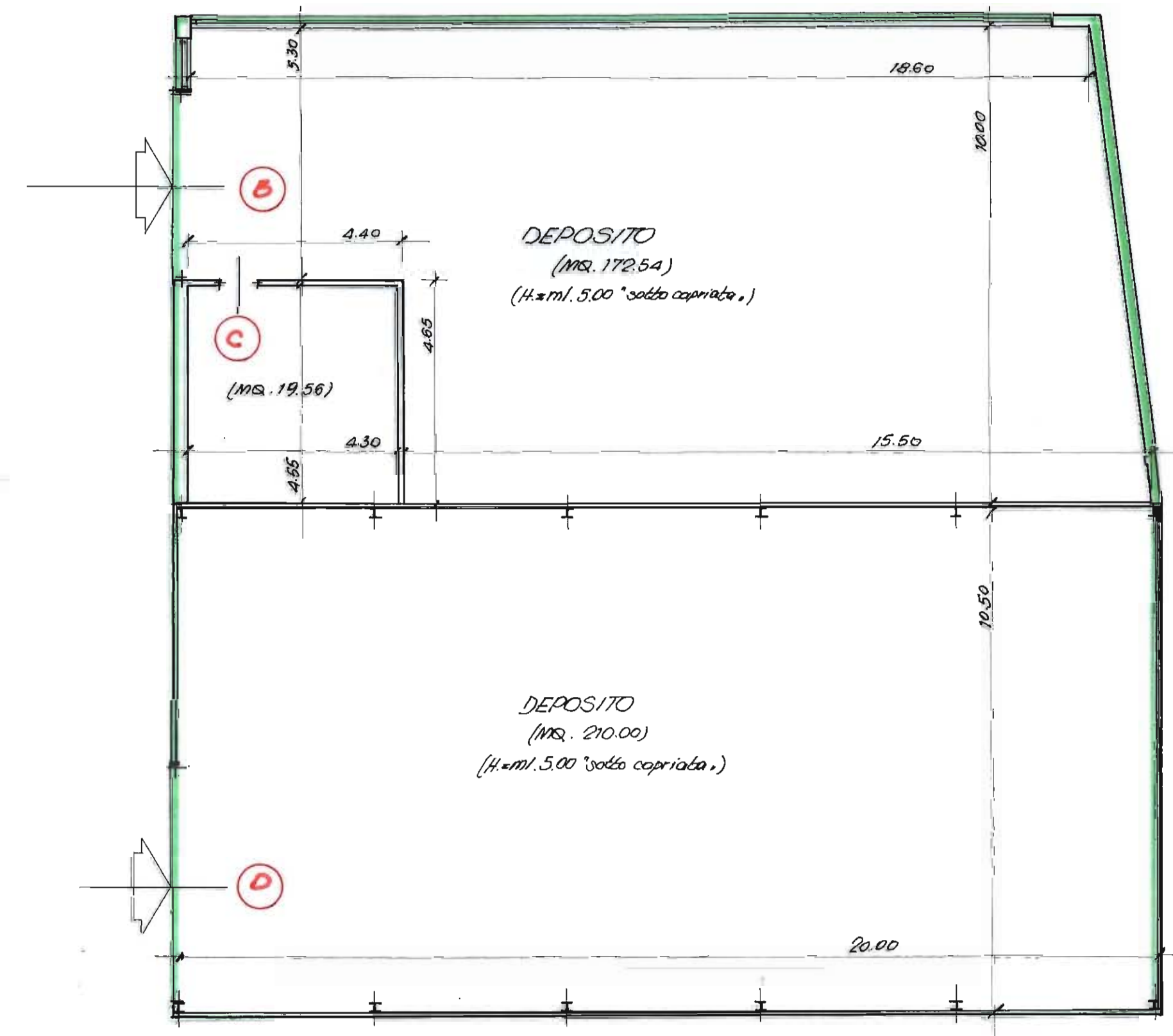
SUBALTERNO 8 "Piano Terra"
Superficie Utile Calpestabile

1	MS. 50,70	
2	MS. 8,14	
3	MS. 25,96	
4	MS. 25,01	
5	MS. 29,06	
6	MS. 24,19	
7	MS. 7,25	
8	MS. 6,17	
9	MS. 14,26	
10	MS. 30,60	
11	MS. 15,85	
12	MS. 13,91	
13	MS. 3,41	MS. 254,51
14	MS. 189,86	
15	MS. 172,54	
16	MS. 19,56	
17	MS. 210,00	
18	MS. 53,19	MS. 675,15
TOTALE	MS. 929,66	MS. 929,66



SUBALTERNO 8 "Piano Primo"
Superficie Utile Calpestabile

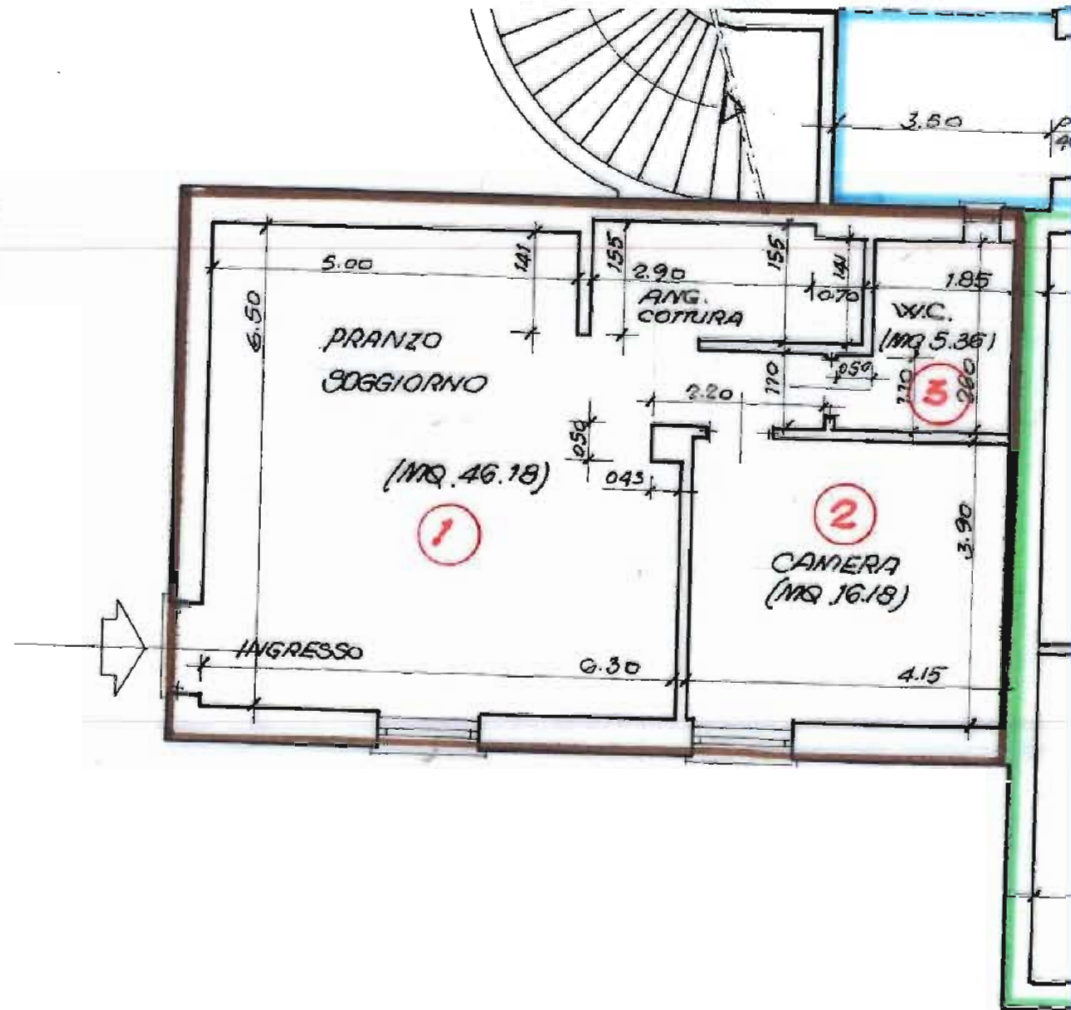
1	MS. 5,27	
2	MS. 11,40	
3	MS. 49,98	
4	MS. 8,19	
TOTALE	MS. 74,84	



SUBALTERNO 3 "Piano Terra"

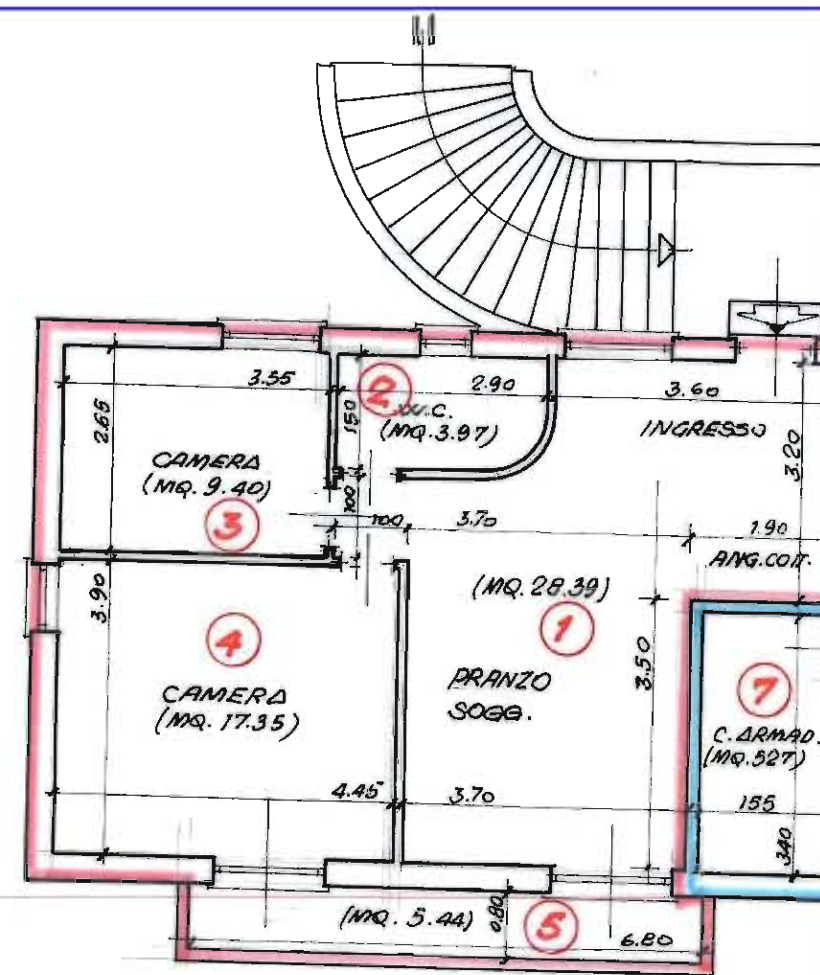
Superficie Utile Calpestabile:

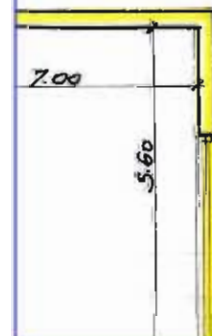
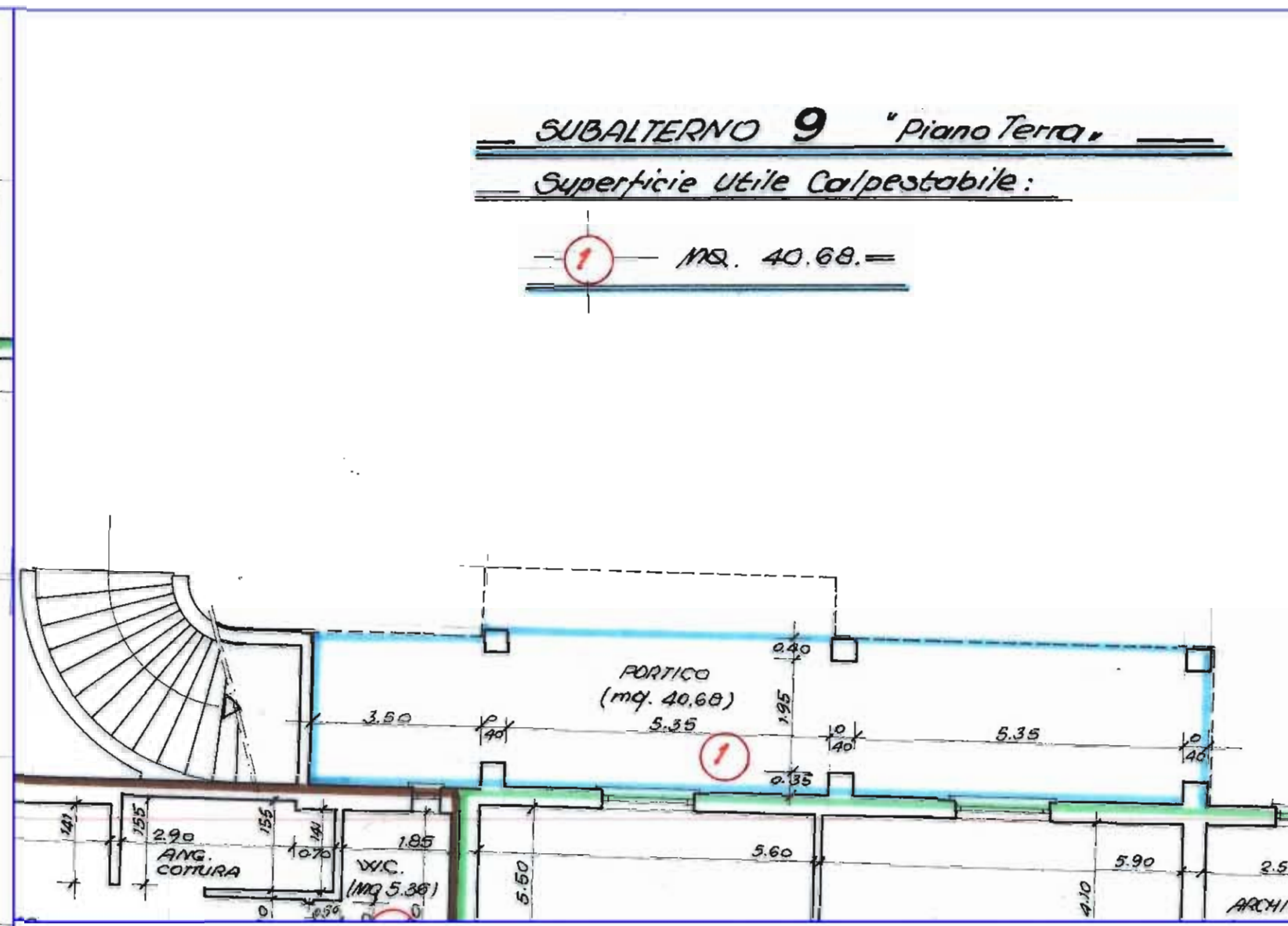
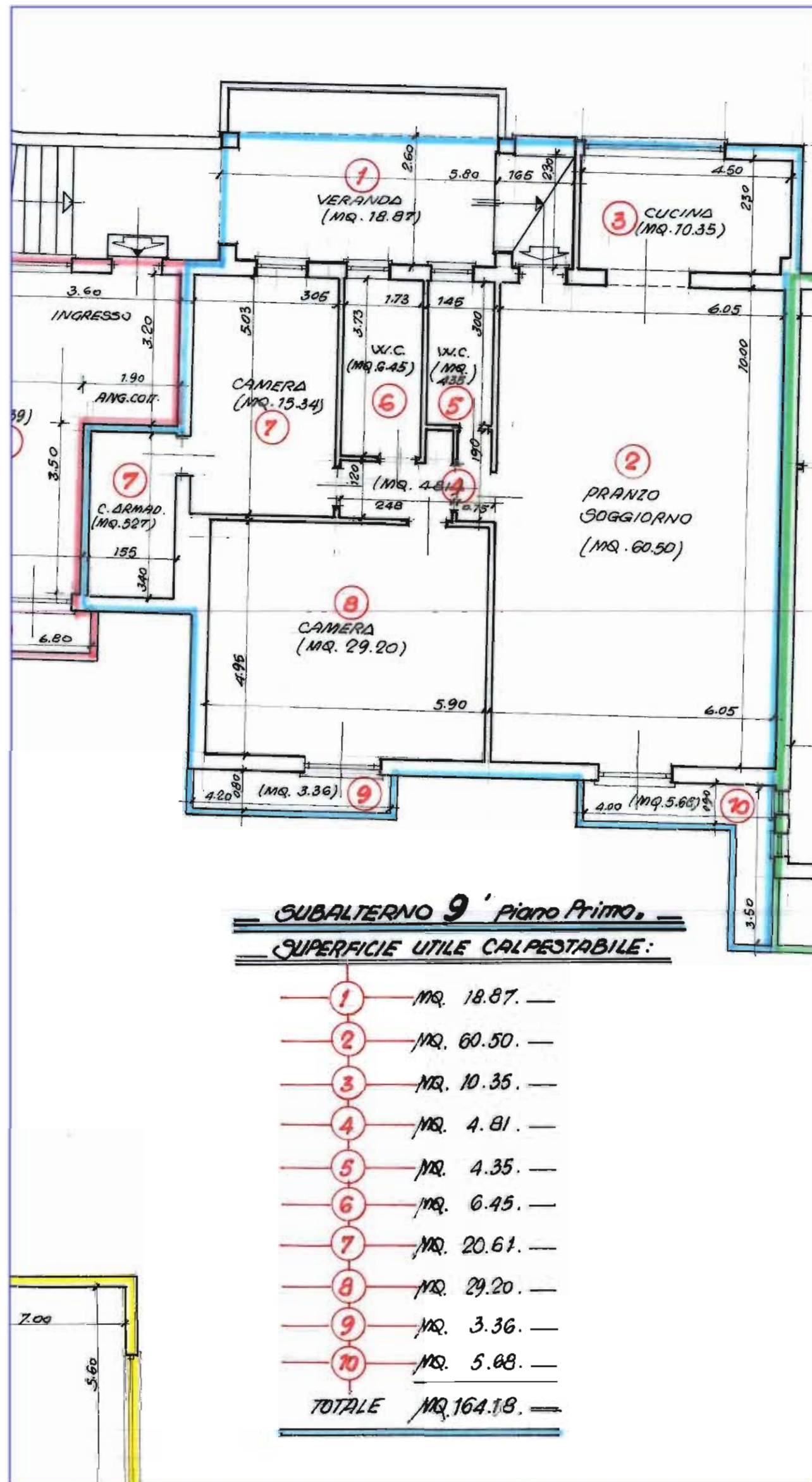
1	mq. 46.18
2	mq. 16.18
3	mq. 5.36
TOTALE	mq. 67.72



SUBALTERNO 10 "Piano Primo"
SUPERFICIE UTILE CALPESTABILE:

1	mq. 28.39. —
2	mq. 3.97. —
3	mq. 9.40. —
4	mq. 17.35. —
5	mq. 5.44. —
<u>TOTALE mq. 64.55. —</u>	





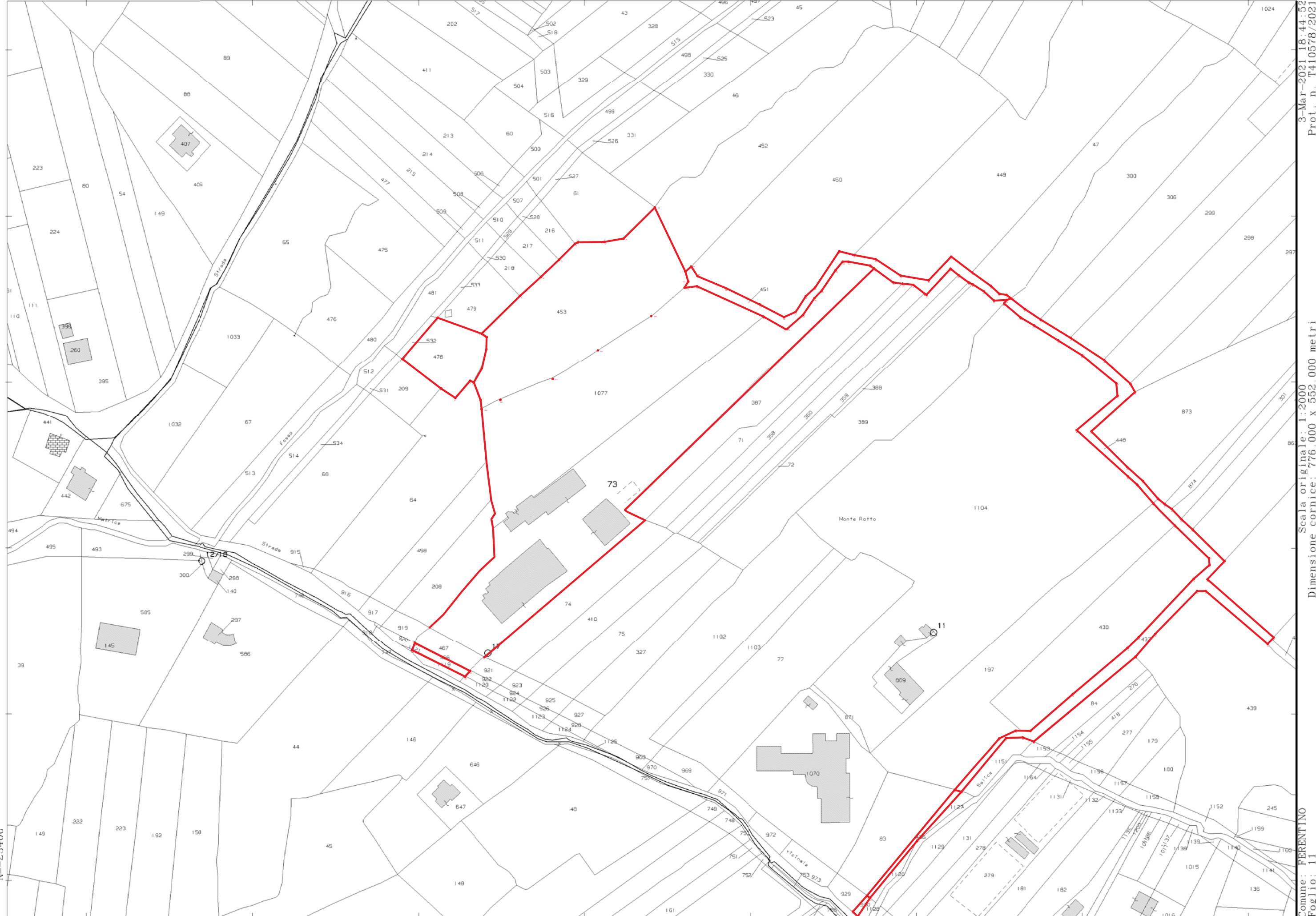
Tribunale Ordinario di Velletri
Sezione Fallimentare
Fall.to n°109/2019 – G.I. Dott.ssa Francesca Aratari
“COMETAL Srl ”
Sentenza del 18 Dicembre 2019 N° 108/2019
Curatore Dott. Giuseppe Amendola

Lotto 12

All. 10.02

ALLEGATO 10.02

Planimetria grafico rilievo stato attuale singoli lotti
Lotto 12



N=23400

E=64500

3-Mar-2021 18:44:52
Prot. n. T410578/2021

Scala originale: 1:2000
Dimensione cornice: 776.000 x 552.000 metri

Comune: FERENTINO
Foglio: 11

1 Particella: 73