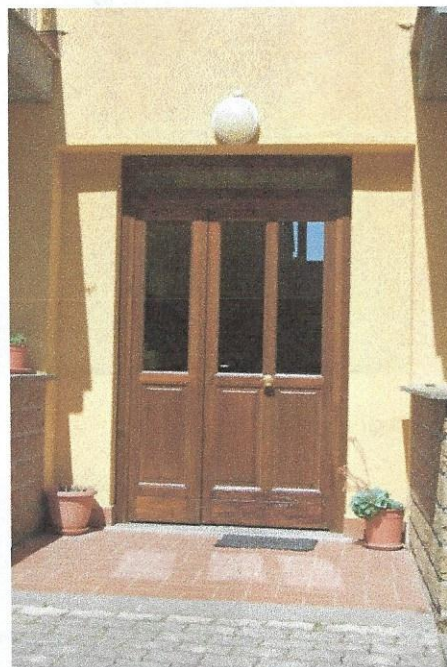


DOCUMENTAZIONE FOTOGRAFICA

IMMOBILE sito in via Aldo Moro snc Comune di Civitella d'Agliano (VT), distinto in Catasto Foglio 25, Part. 505 sub5.

APPARTAMENTO

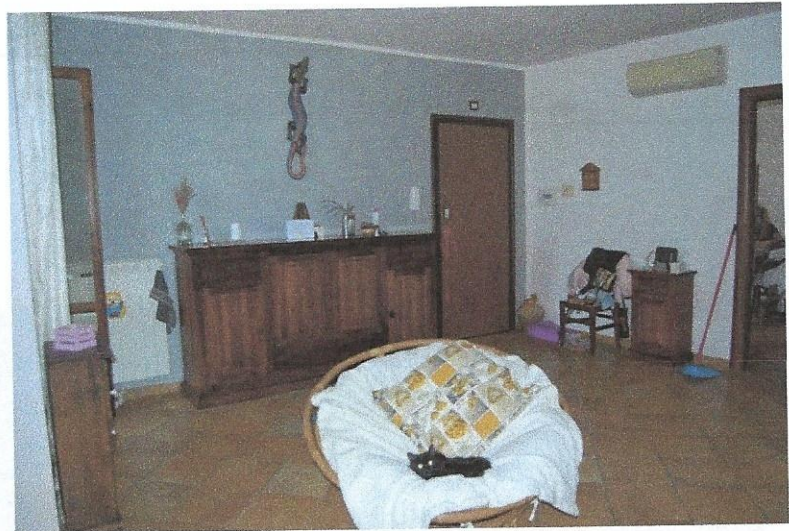
1. Esterno ed accesso



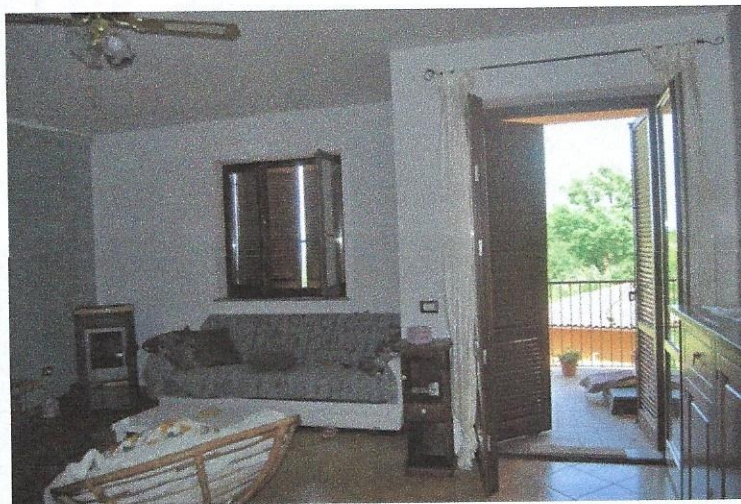
2.Interni



Porta di ingresso



Soggiorno

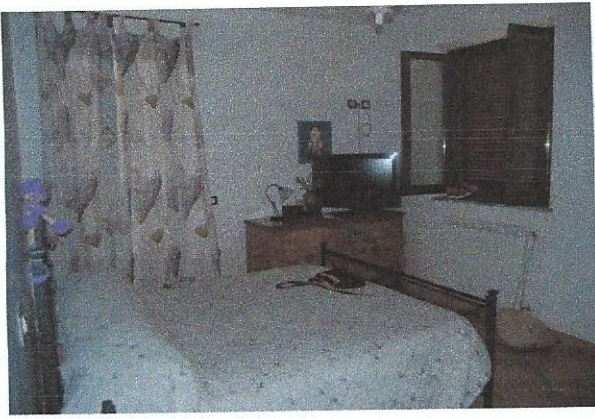


Soggiorno

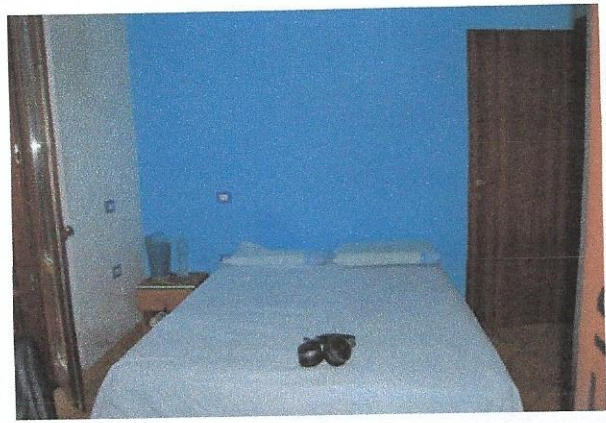


Soggiorno

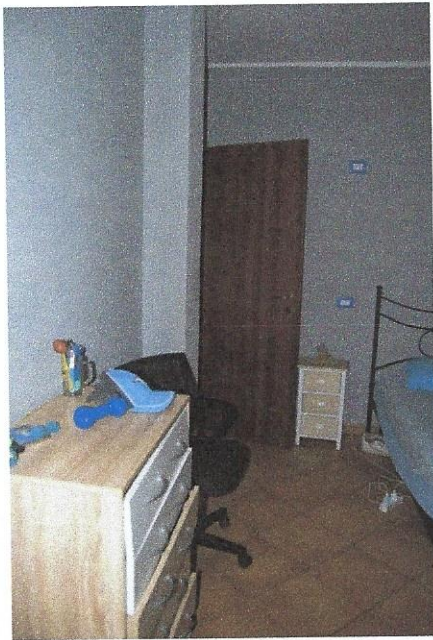




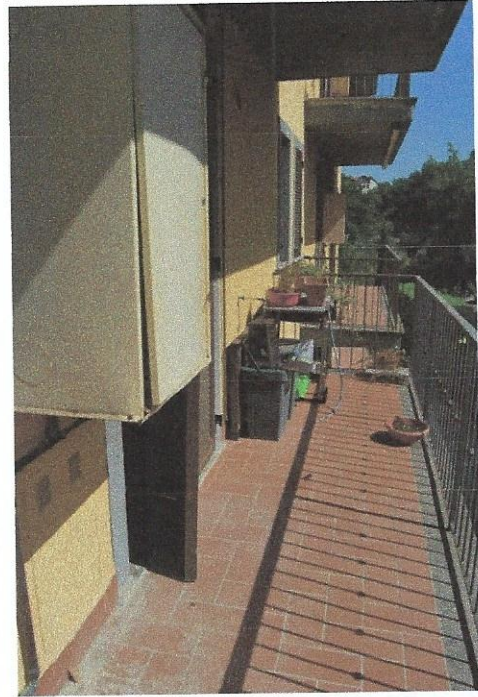
Camera 1



Camera 2



Camera 3



Balcone cucina

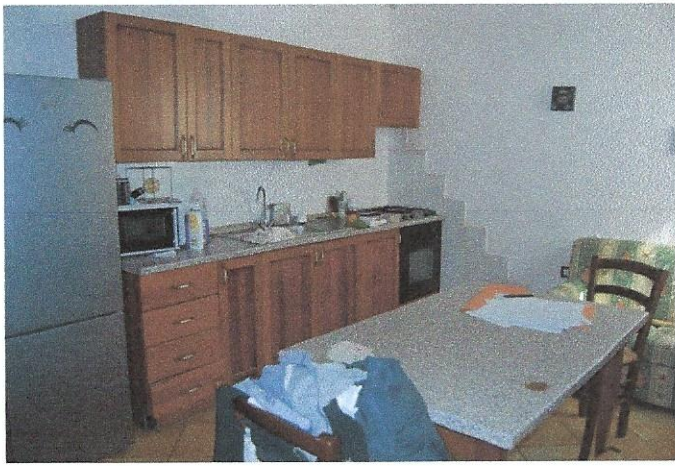


Balcone salone



Balcone camere





Cucina



Cucina



Bagno principale



Bagno secondario



Disimpegno

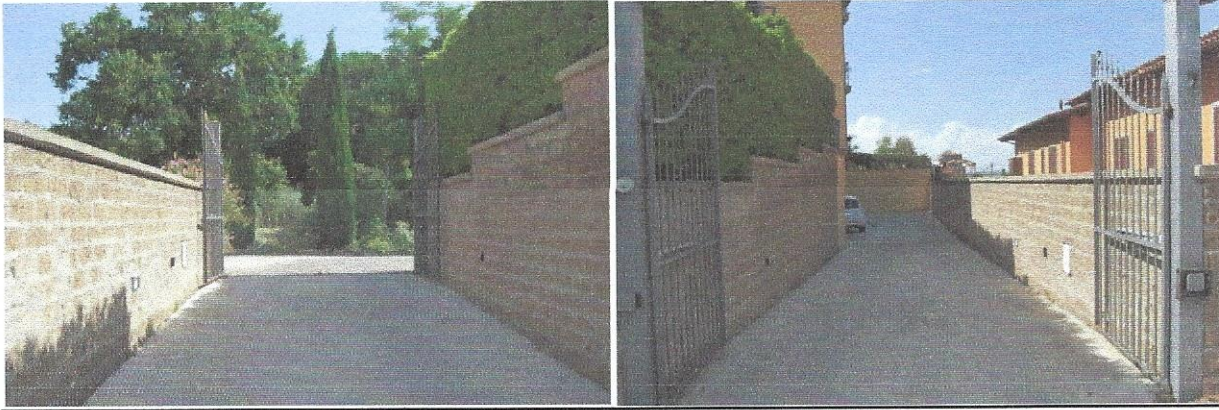


DOCUMENTAZIONE FOTOGRAFICA

IMMOBILE sito in via Aldo Moro snc Comune di Civitella d'Agliano (VT), distinto in Catasto Foglio 25, Part. 505 sub11.

GARAGE

1. Esterno accesso Garage



2. Interno Garage

