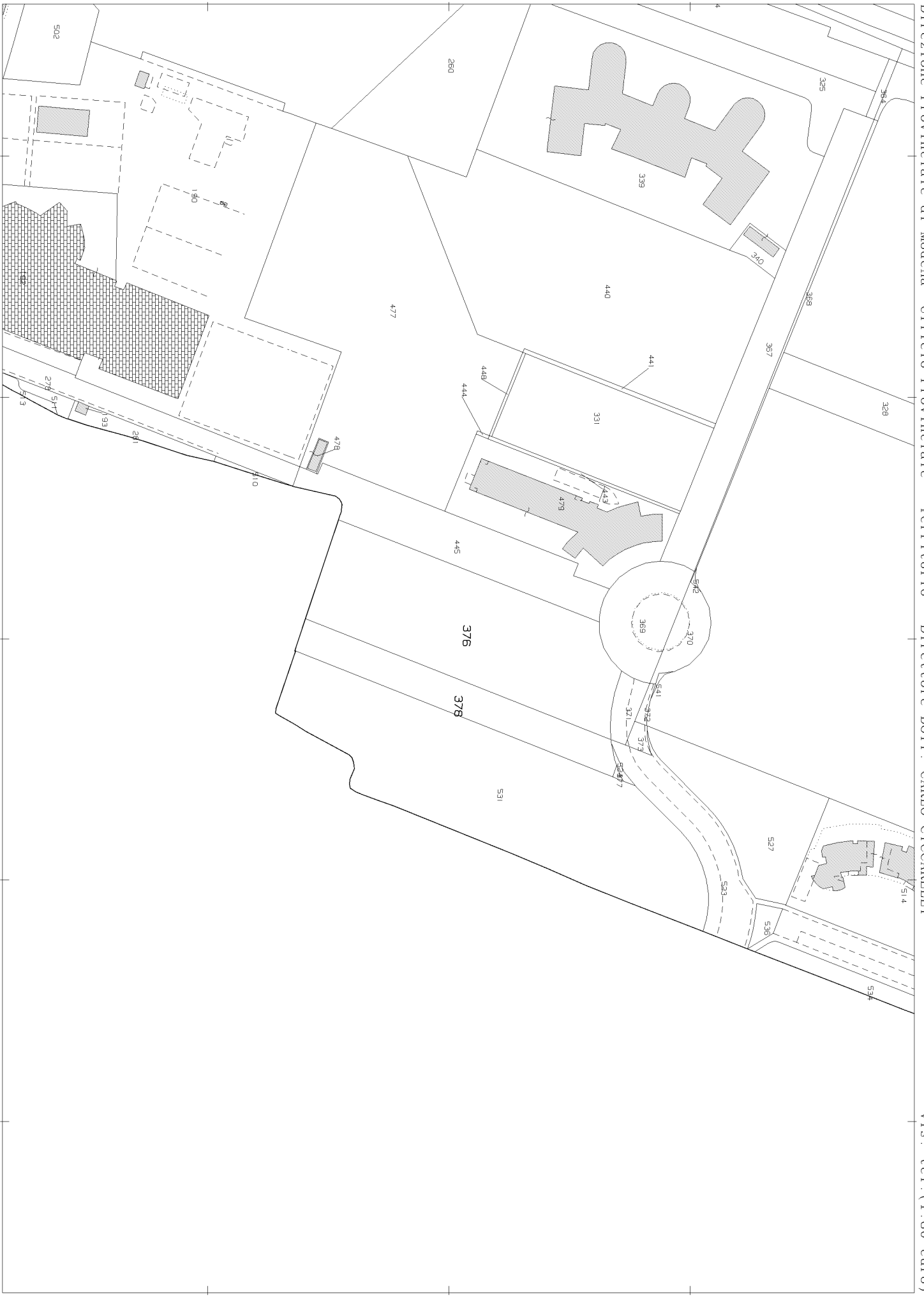
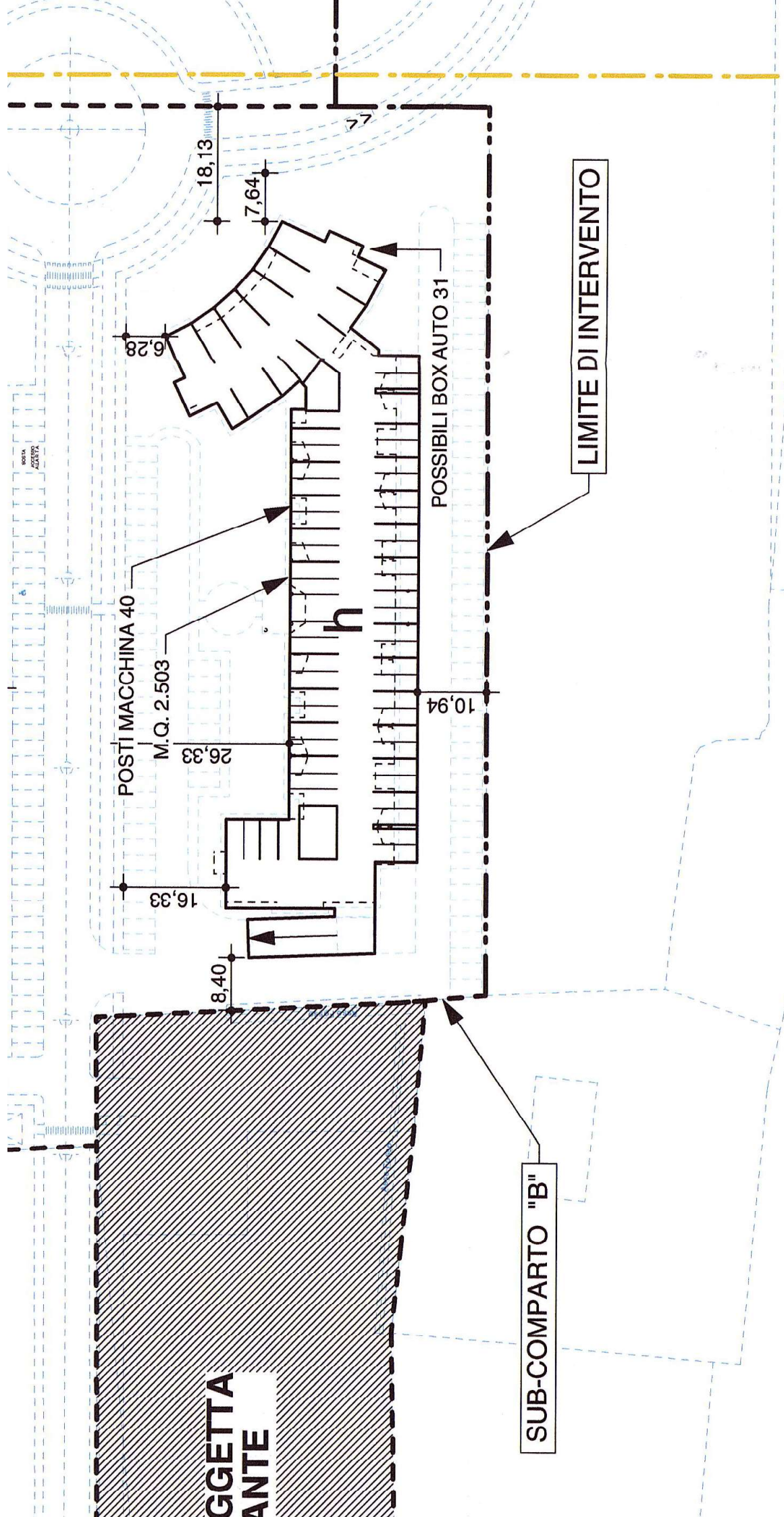


E=1649900

2 Particelle: 376, 378





OGGETTA ANTE

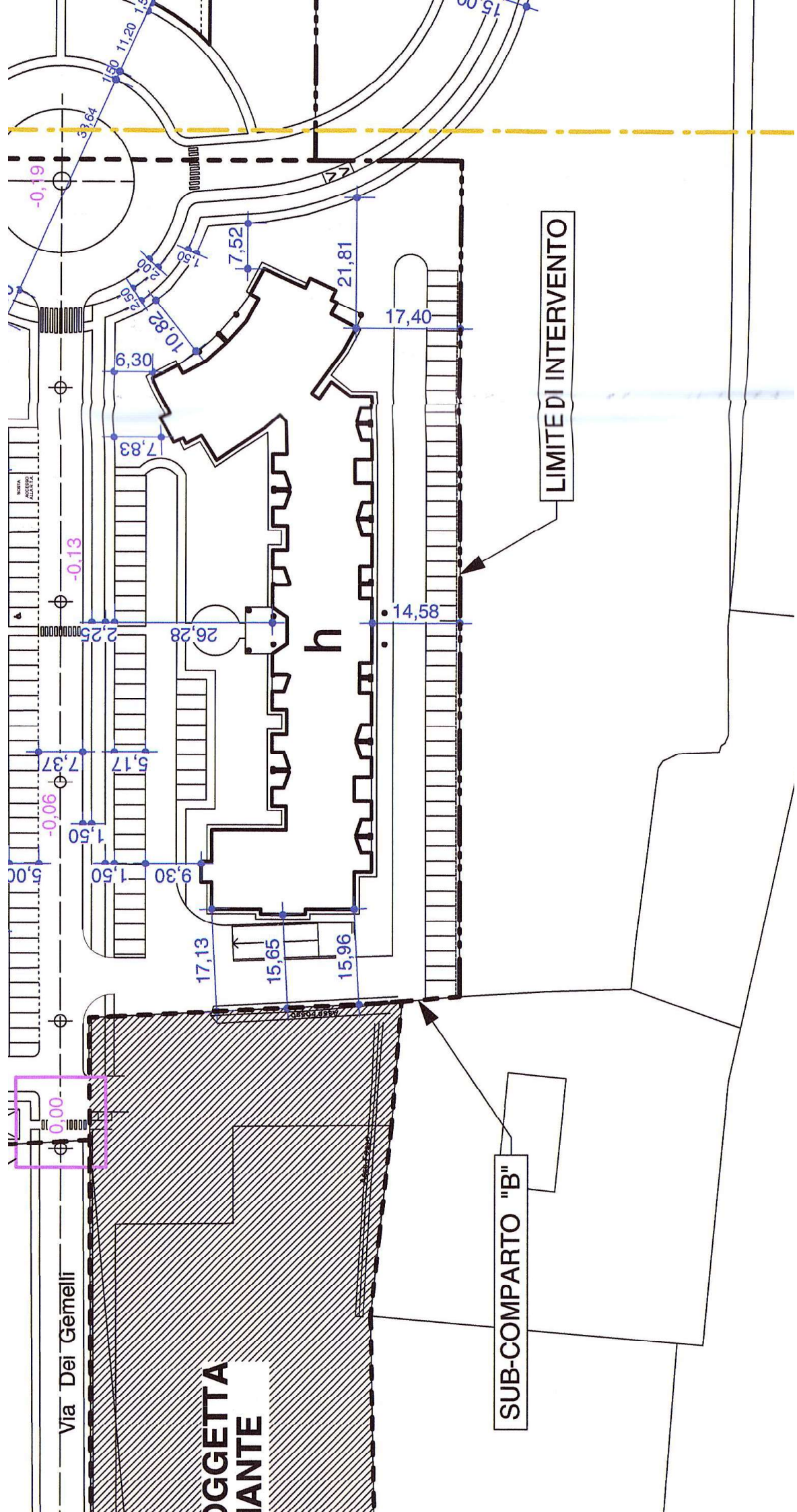
POSTI MACCHINA 40

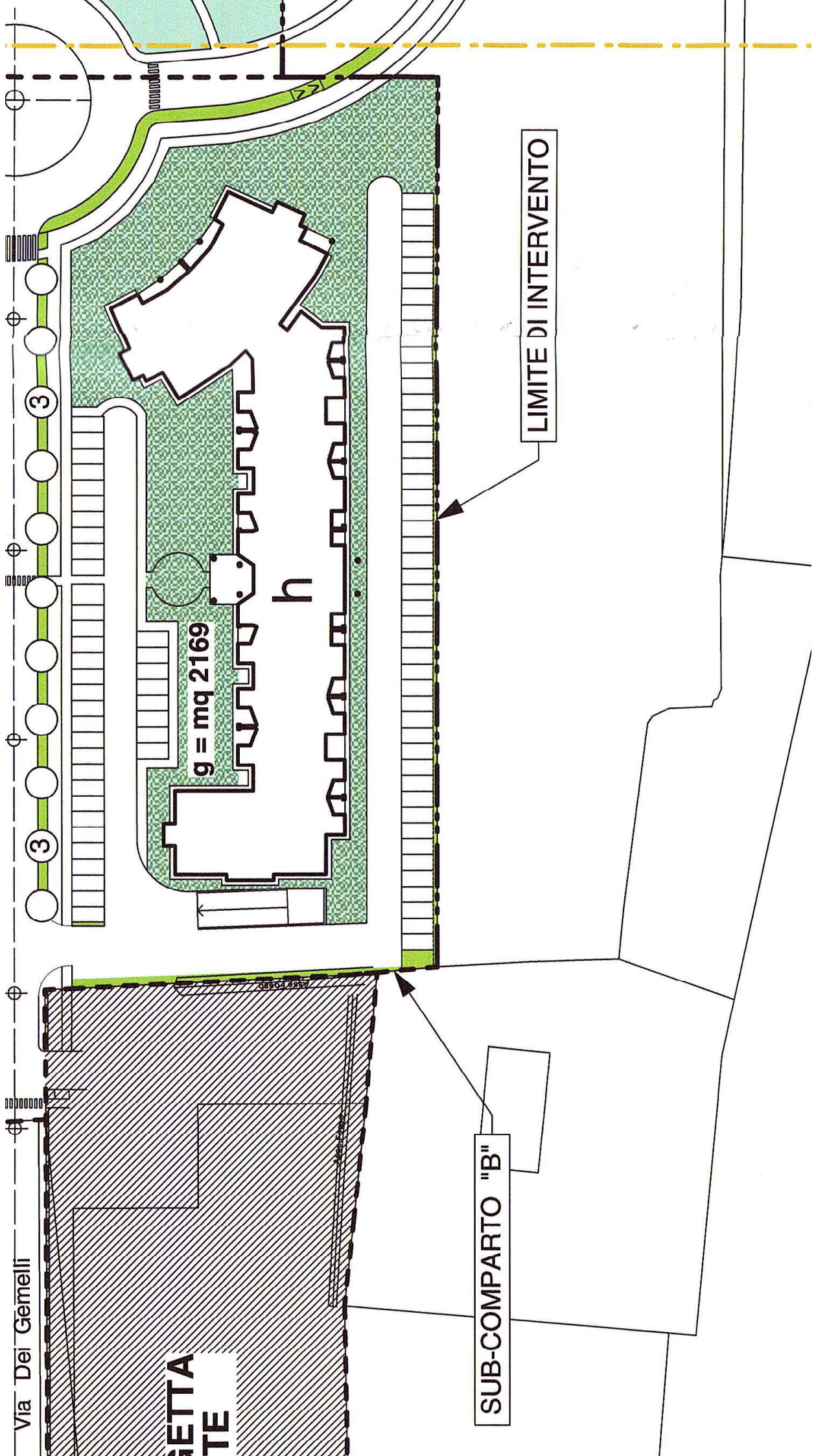
M.Q. 2.503

POSSIBILI BOX AUTO 31

LIMITE DI INTERVENTO

SUB-COMPARTO "B"





Via Dei Gemelli

NETTA
TE

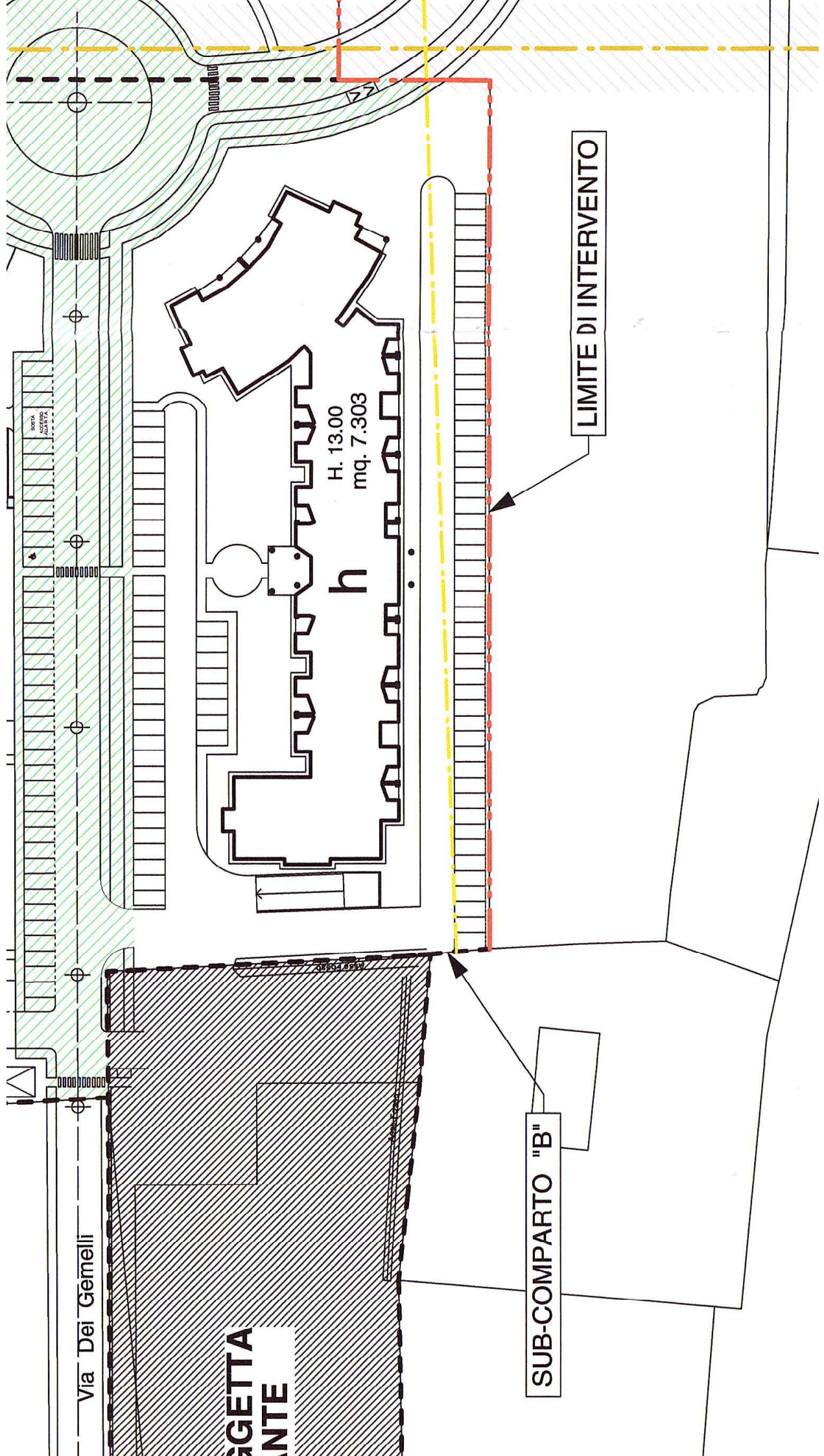
g = mq 2169

h

SUB-COMPARTO "B"

LIMITE DI INTERVENTO





Via Dei Gemelli

AGGETTA
ANTE

H. 13.00
mq. 7.303

h

SUB-COMPARTO "B"

LIMITE DI INTERVENTO