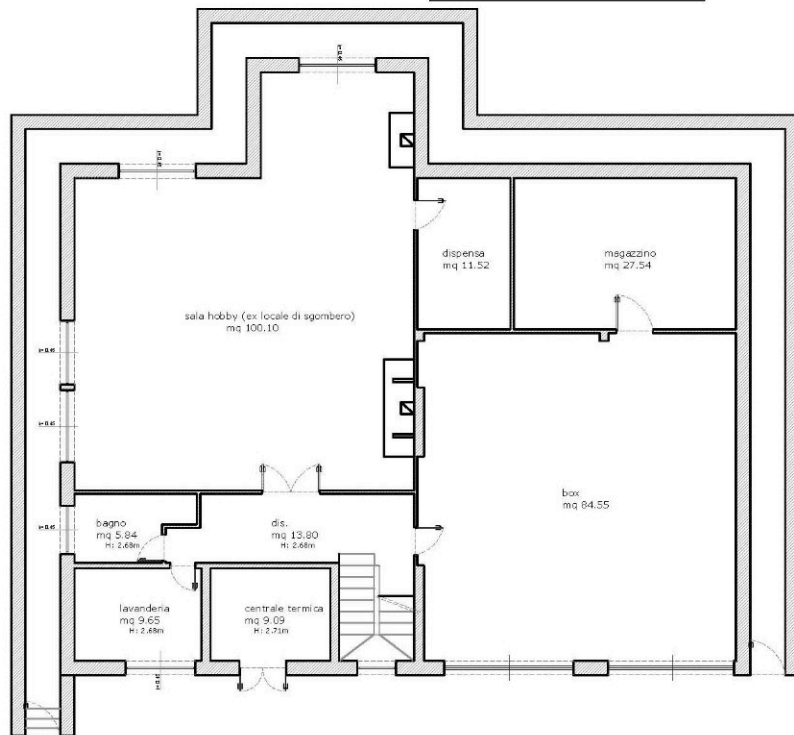


**PLANIMETRIA** scala 1:100



**Sup. non residenziale**

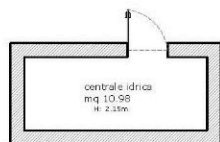
sala hobby (ex sgombero)	mq 100,10
dispensa	mq 11,52
lavanderia	mq 9,65
dis.	mq 13,90
bagno	mq 5,94
<b>Superficie totale</b>	<b>mq 149,91</b>

**Sup. non residenziale**

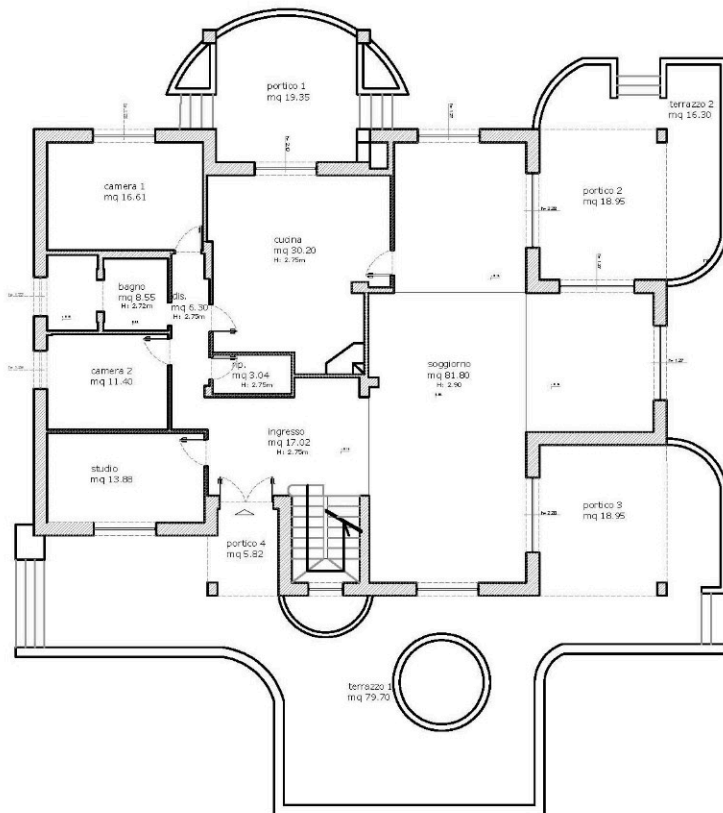
magazzino	mq 27,54
centrale termica	mq 9,09
centrale idrica	mq 10,98
box	mq 84,83

**Superficie totale** mq 132,44

**PIANO SCANTINATO**



## PLANIMETRIA scala 1:100



## Sup. utile abitazione

soggiorno	mq 81.80
cucina	mq 30.20
camera 1	mq 16.61
ca.	mq 6.20
bagno	mq 6.55
camera 2	mq 11.40
studio	mq 13.88
rip.	mq 3.04
ingresso	mq 17.02
<b>Superficie totale</b>	<b>mq 188.80</b>

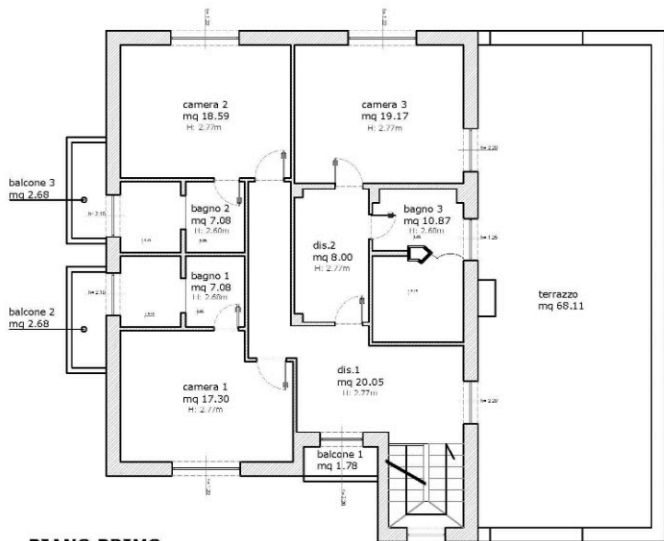
## Sup. non residenziale

portico 1	mq 19.35
portico 2	mq 18.95
portico 3	mq 18.95
portico 4	mq 5.82
terrazzo 1	mq 79.70
terrazzo 2	mq 16.30
gazebo	mq 20.00
<b>Superficie totale</b>	<b>mq 178.07</b>

PIANO TERRA



# PLANIMETRIA scala 1:100



## PIANO PRIMO

### Sup. utile abitazione

camera 1	mq	17.30
dis. 1	mq	20.05
camera 2	mq	18.59
dis. 2	mq	8.00
bagno 1	mq	7.08
bagno 2	mq	7.08
camera 3	mq	19.17
bagno 3	mq	10.87

Superficie totale **mq 108.14**

### Sup. non residenziale

balcone 1	mq	1.78
balcone 2	mq	2.68
balcone 3	mq	2.68
terrazzo	mq	68.11

Superficie totale **mq 75.25**

