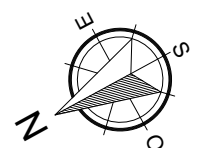
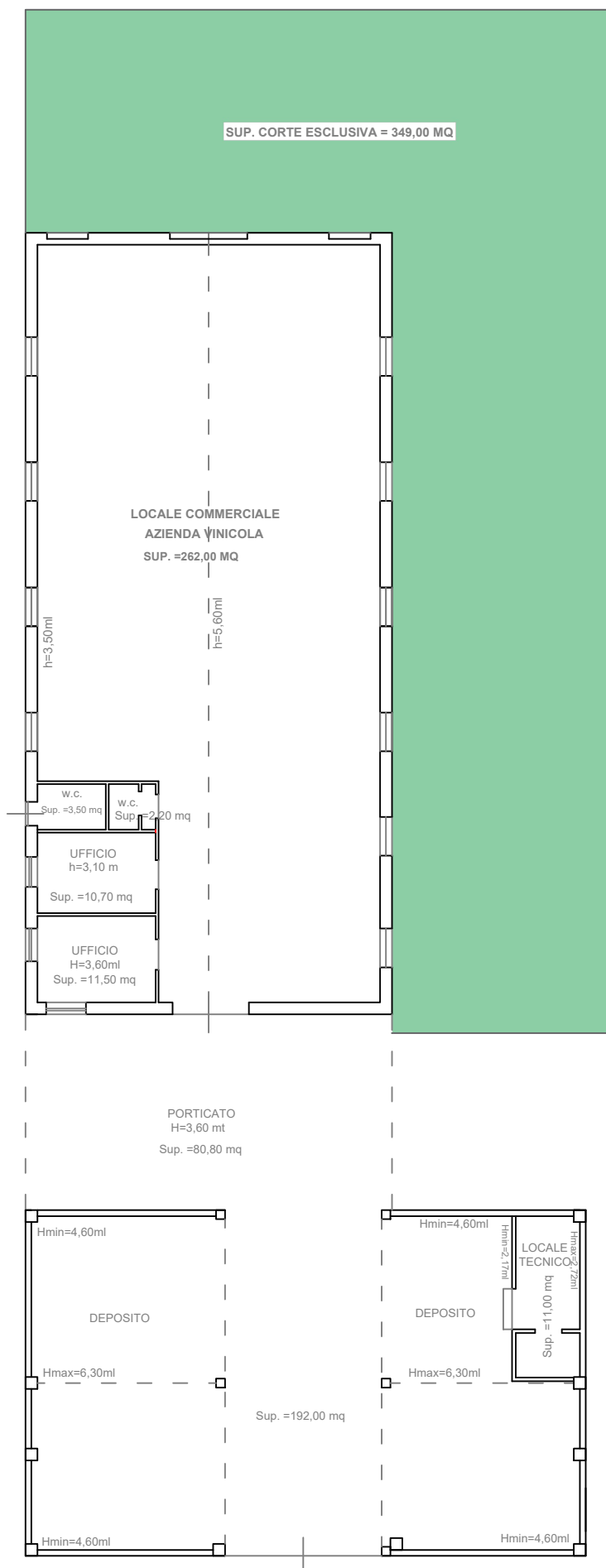


SUP. LORDA LOC. COMMERCIALE = 287,00 MQ  
SUP. NETTA LOC. COMMERCIALE = 262,00 MQ  
SUP. NETTA UFFICI = 22,20 MQ  
SUP. LORDA UFFICI = 27,50 MQ  
SUP. NETTA WC = 5,70 MQ  
SUP. LORDA WC = 7,50 MQ  
SUP. PORTICATO = 80,80 MQ  
SUP. LORDA DEPOSITO = 203,90 MQ  
SUP. NETTA DEPOSITO = 192,00 MQ  
SUP. LORDA LOC. TECNICO = 14,00 MQ  
SUP. NETTA LOC. TECNICO = 11,00 MQ  
SUP. CORTE ESCLUSIVA = 349,00 MQ

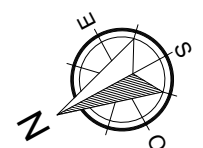
PIANO TERRA

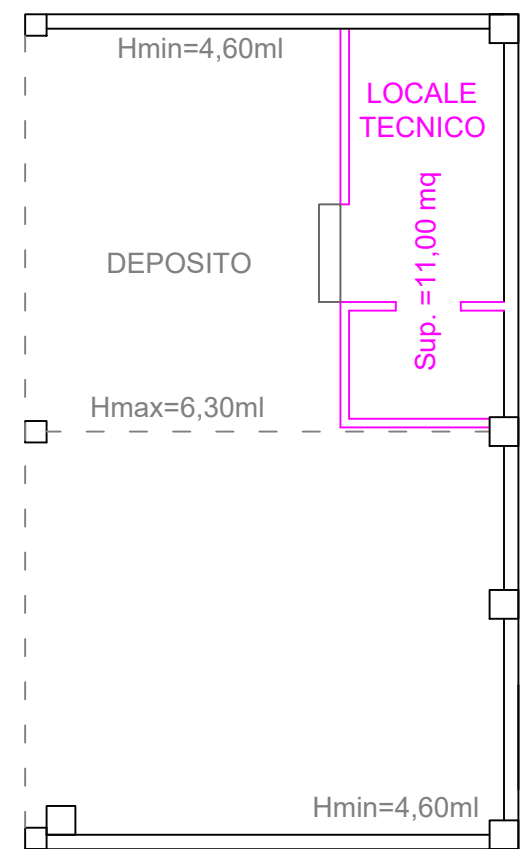
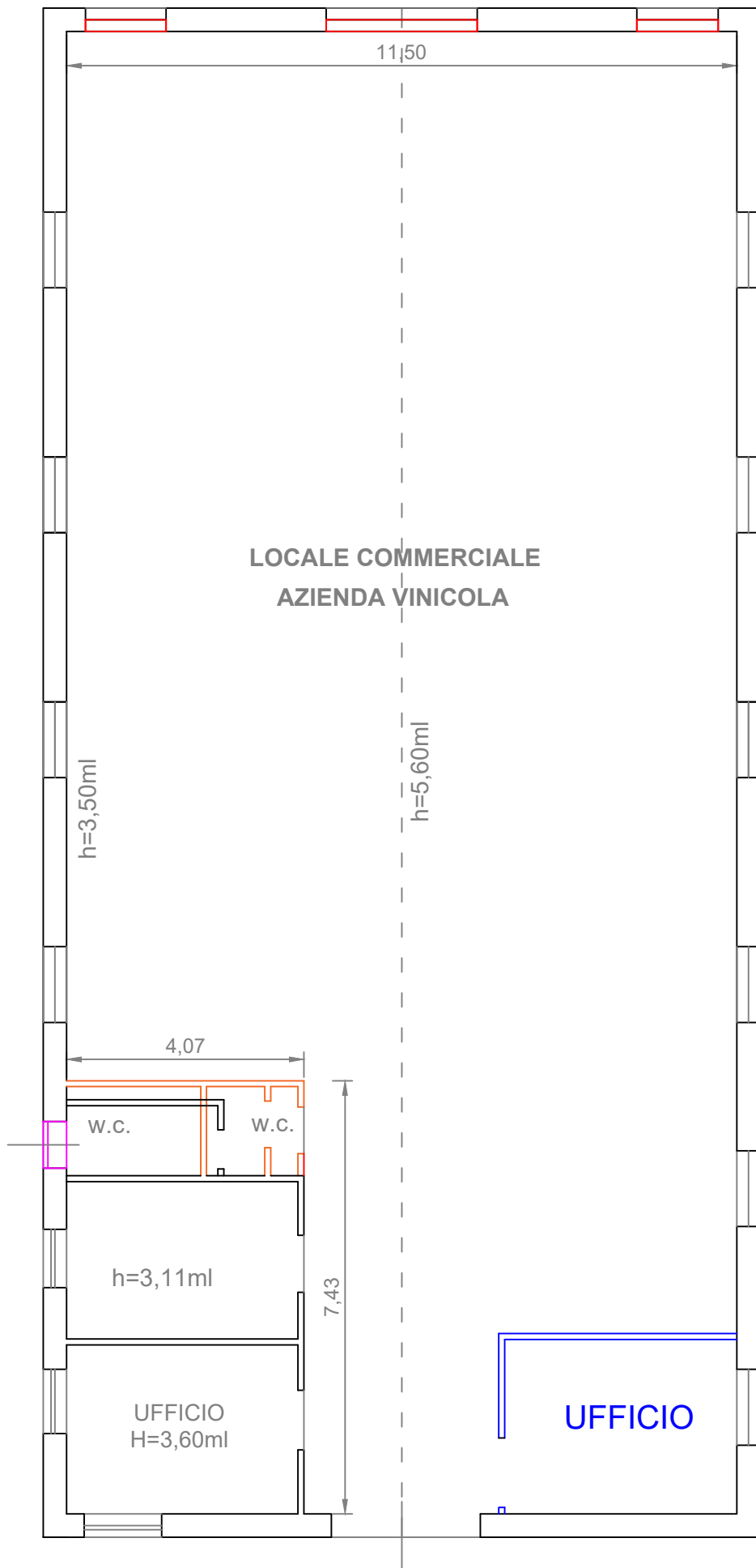




- SUP. LORDA LOC. COMMERCIALE = 287,00 MQ
- SUP. NETTA LOC. COMMERCIALE = 262,00 MQ
- SUP. NETTA UFFICI = 22,20 MQ
- SUP. LORDA UFFICI = 27,50 MQ
- SUP. NETTA WC = 5,70 MQ
- SUP. LORDA WC = 7,50 MQ
- SUP. PORTICATO = 80,80 MQ
- SUP. LORDA DEPOSITO = 203,90 MQ
- SUP. NETTA DEPOSITO = 192,00 MQ
- SUP. LORDA LOC. TECNICO = 14,00 MQ
- SUP. NETTA LOC. TECNICO = 11,00 MQ
- SUP. CORTE ESCLUSIVA = 349,00 MQ

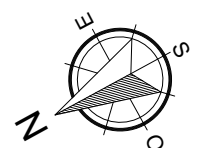
PIANO TERRA SUB.3



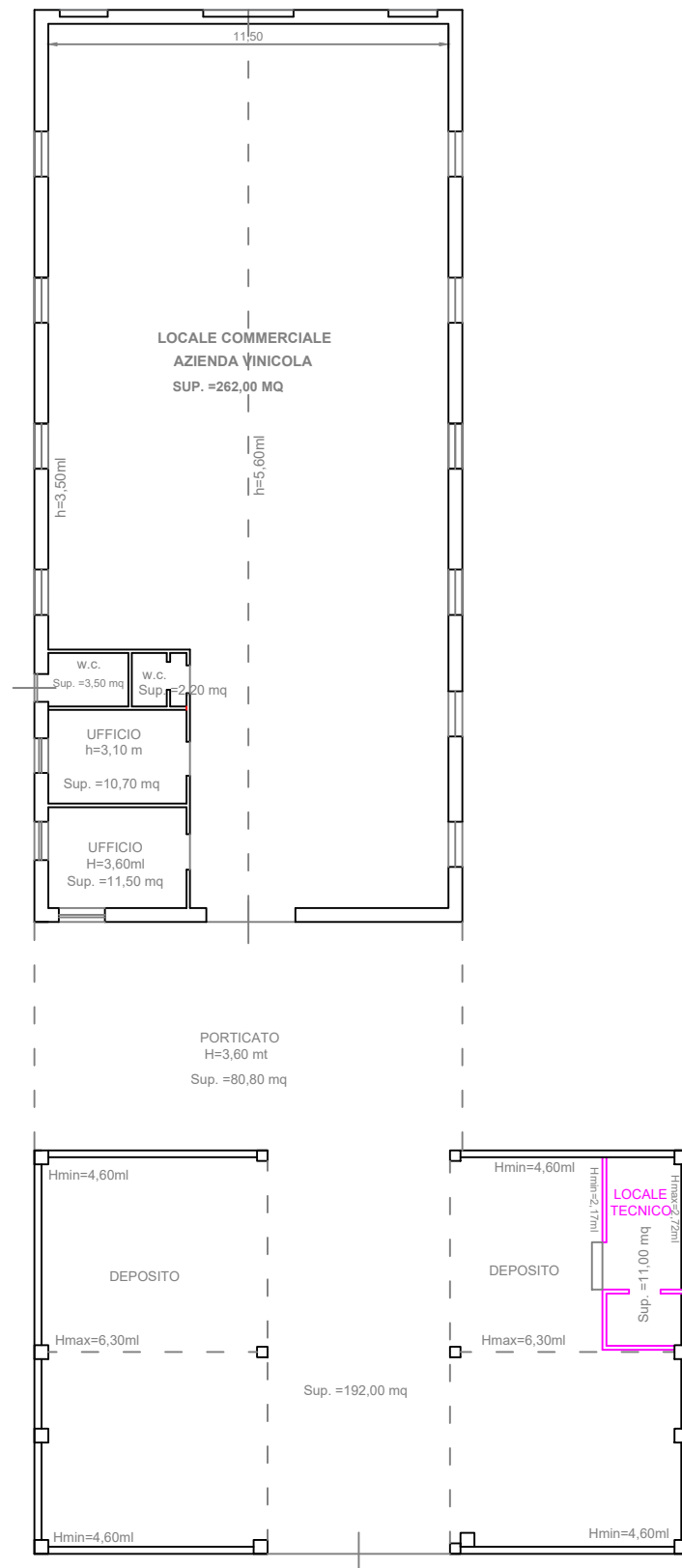


DIFFORMITA' RICONTRATE

- Tramezzature demolite
- Ampliamento servizio wc
- Chiusura di porte esterne
- Trasformazione di finestra in porta
- Realizzazione di locale tecnico all'interno del deposito

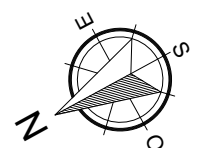


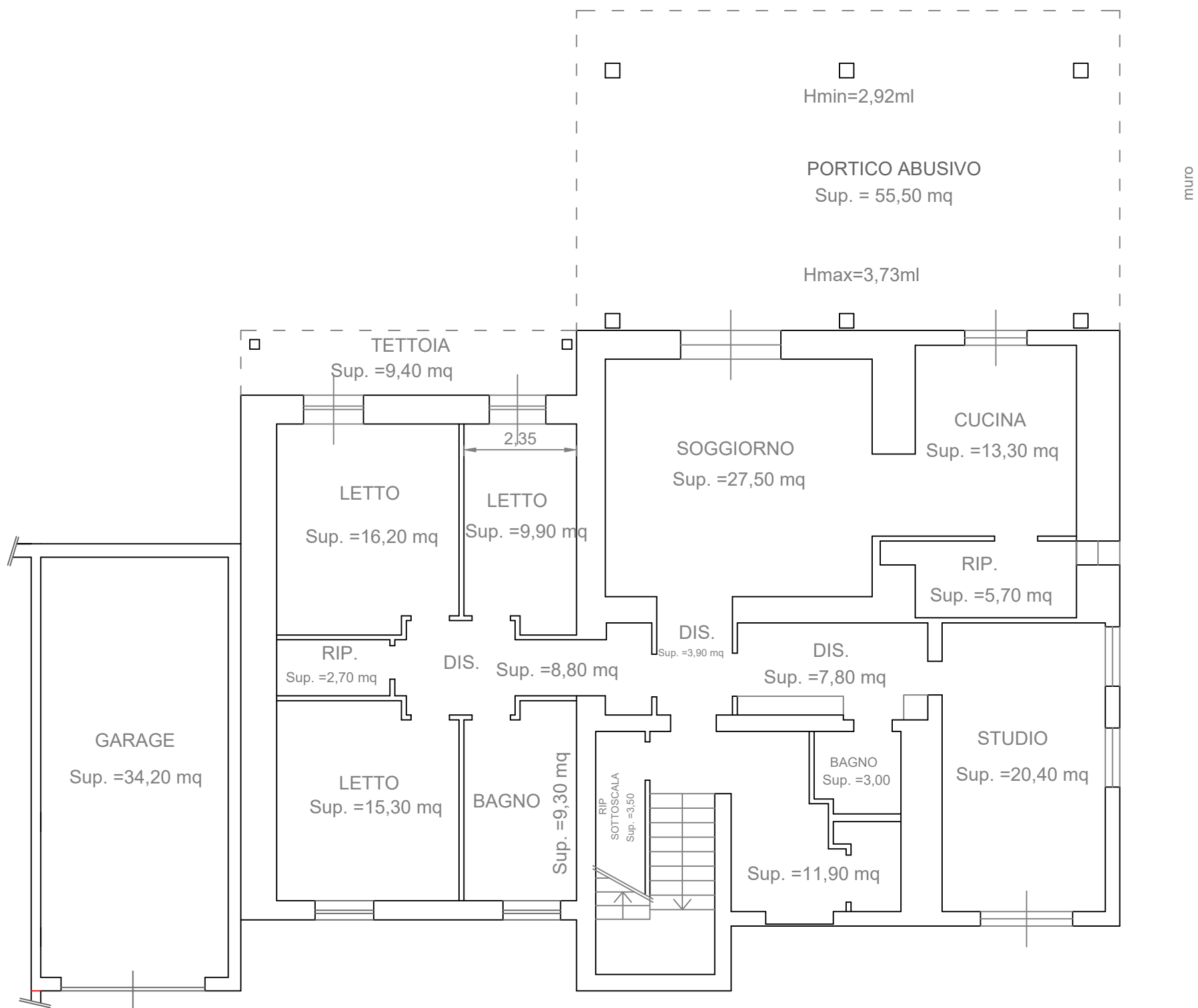
PLANIMETRIA DI CONFRONTO TRA STATO DI FATTO E  
SCIA AVENTE PROT. N.16296 DEL 13-8-2015 - SCALA 1:200



DIFFORMITA' RICONTRATE

- Realizzazione di locale tecnico all'interno del deposito

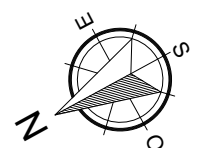


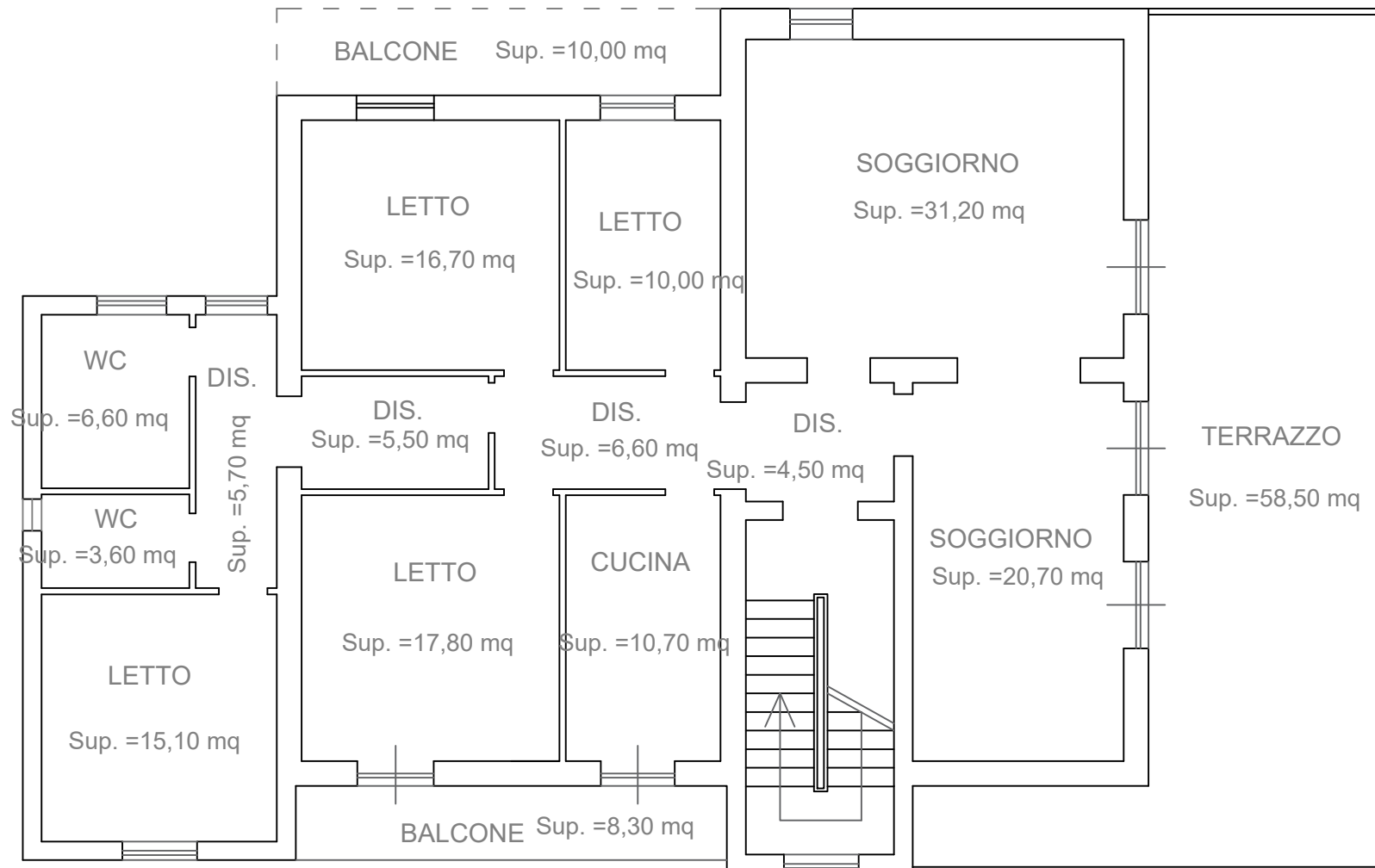


PIANO TERRA - ABITAZIONE - SUB.2

H=3,00 m

**SUP. LORDA ABITAZIONE = 221,50 MQ**  
**SUP. NETTA ABITAZIONE = 159,20 MQ**  
**SUP. LORDA GARAGE = 39,50 MQ**  
**SUP. NETTA GARAGE = 34,20 MQ**  
**SUP. PORTICATO = 55,50 MQ**

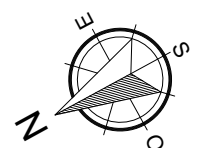


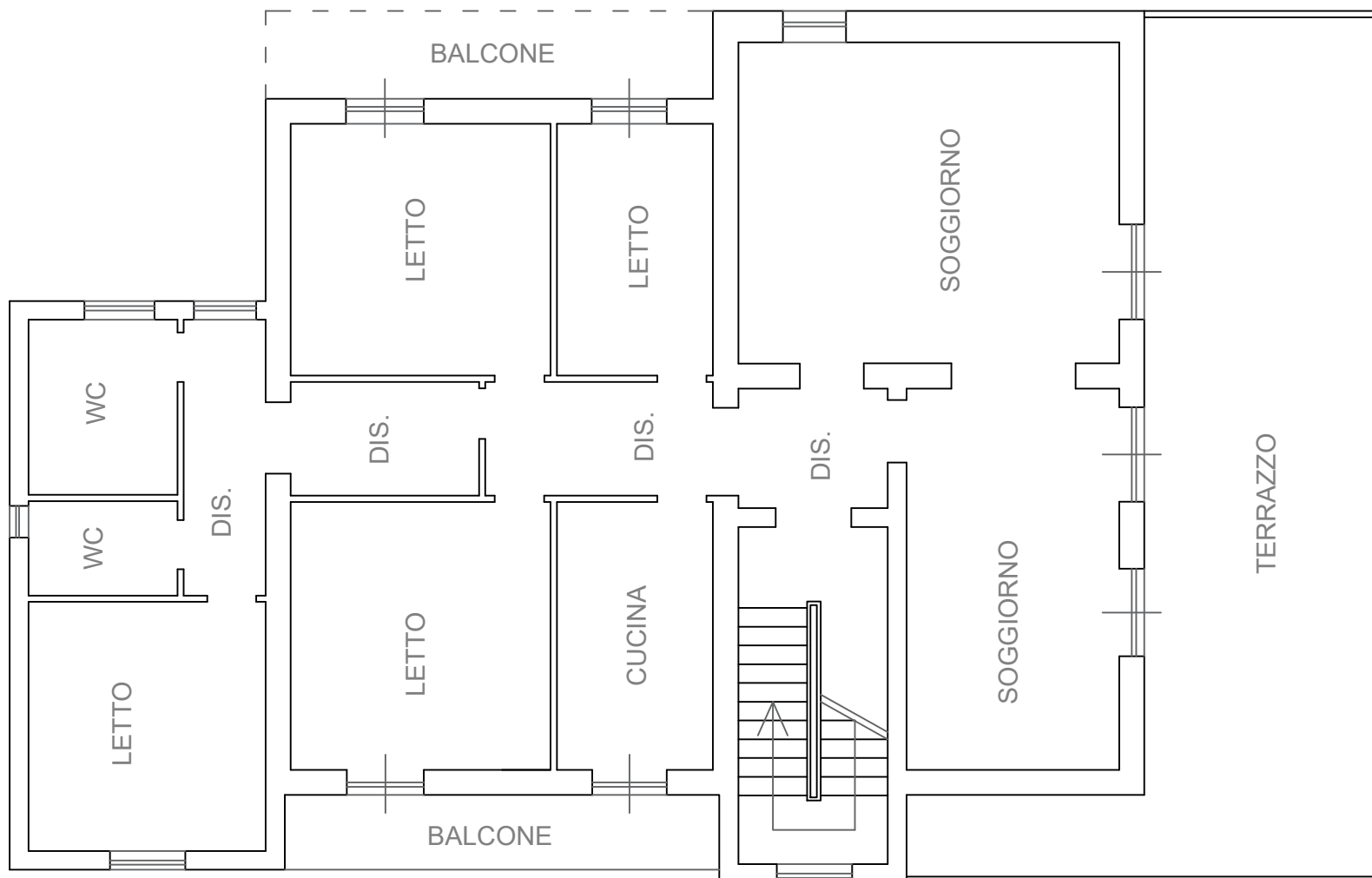


PIANO PRIMO ABITAZIONE - SUB.2

H=3,00 m

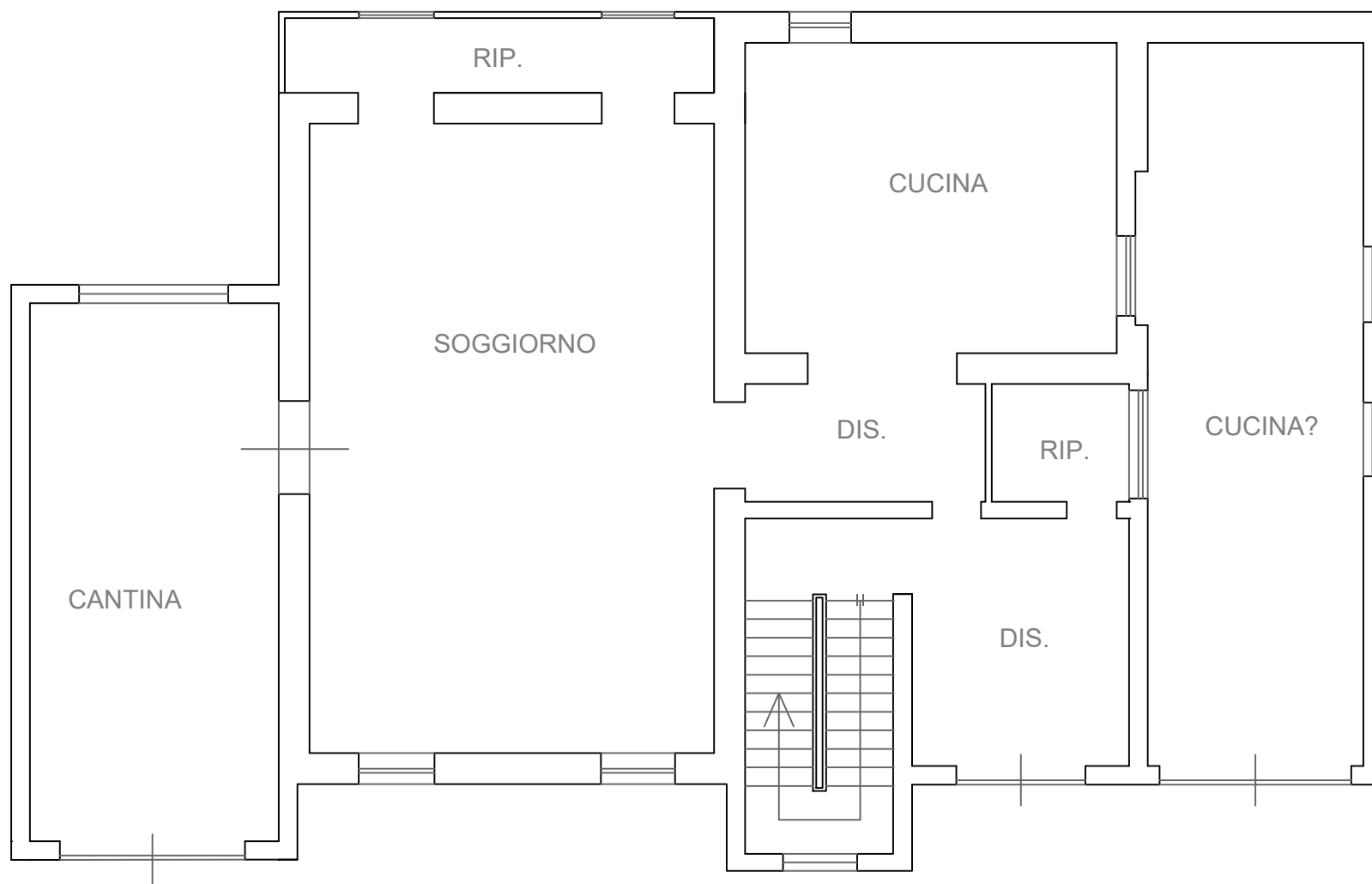
**SUP. LORDA ABITAZIONE = 208,00 MQ**  
**SUP. NETTA ABITAZIONE = 154,70 MQ**  
**SUP. TERRAZZO = 58,50 MQ**  
**SUP. BALCONI = 18,30 MQ**





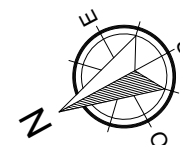
PIANO PRIMO

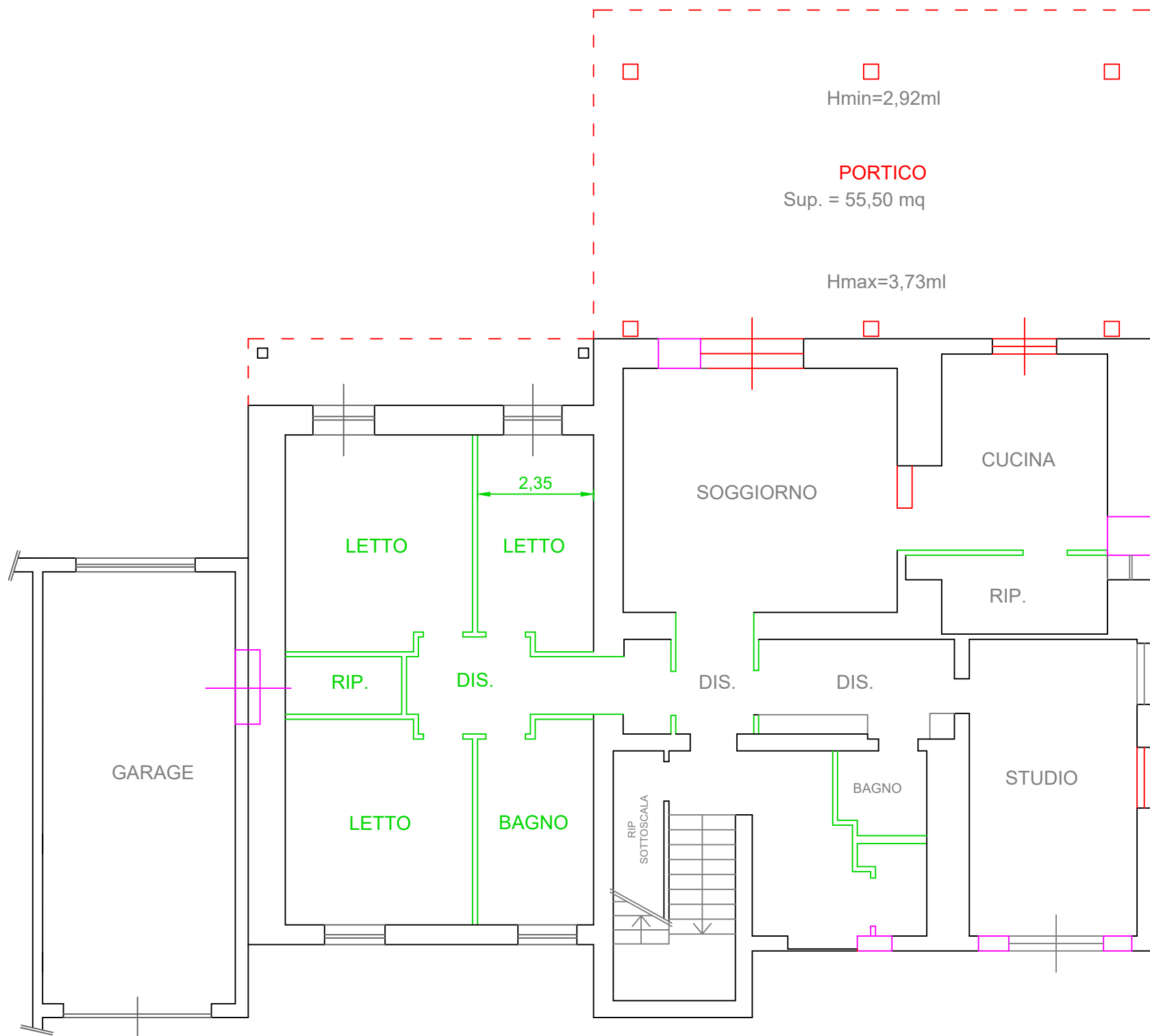
H=3,00 m



PIANO TERRA

H=3,05 m





PIANO TERRA - ABITAZIONE - SUB.2

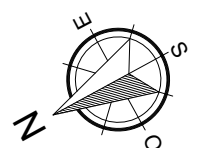
H=3,00 m

DIFFORMITA' RISCONTRATE A PIANO TERRA

- Tramezzature interne realizzate
- Aperture realizzate
- Opere di chiusura
- Porticato abusivo

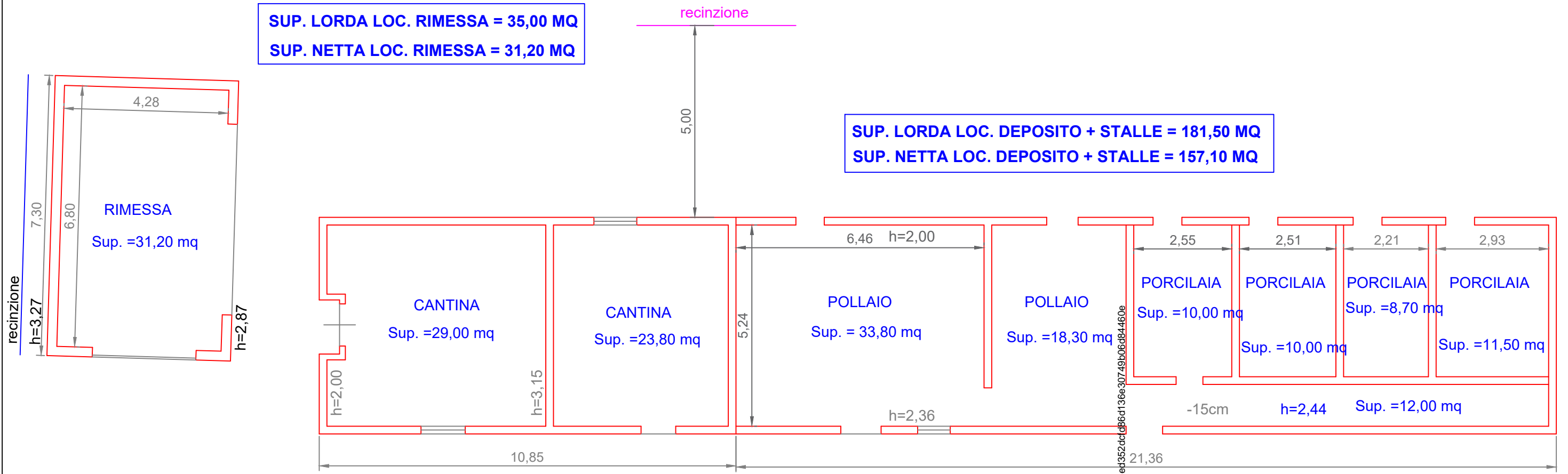
DIFFORMITA' RISCONTRATE A PIANO PRIMO

- NESSUNA





# ANNESI AGRICOLI PRIVI DI AUTORIZZAZIONE (DA DEMOLIRE)



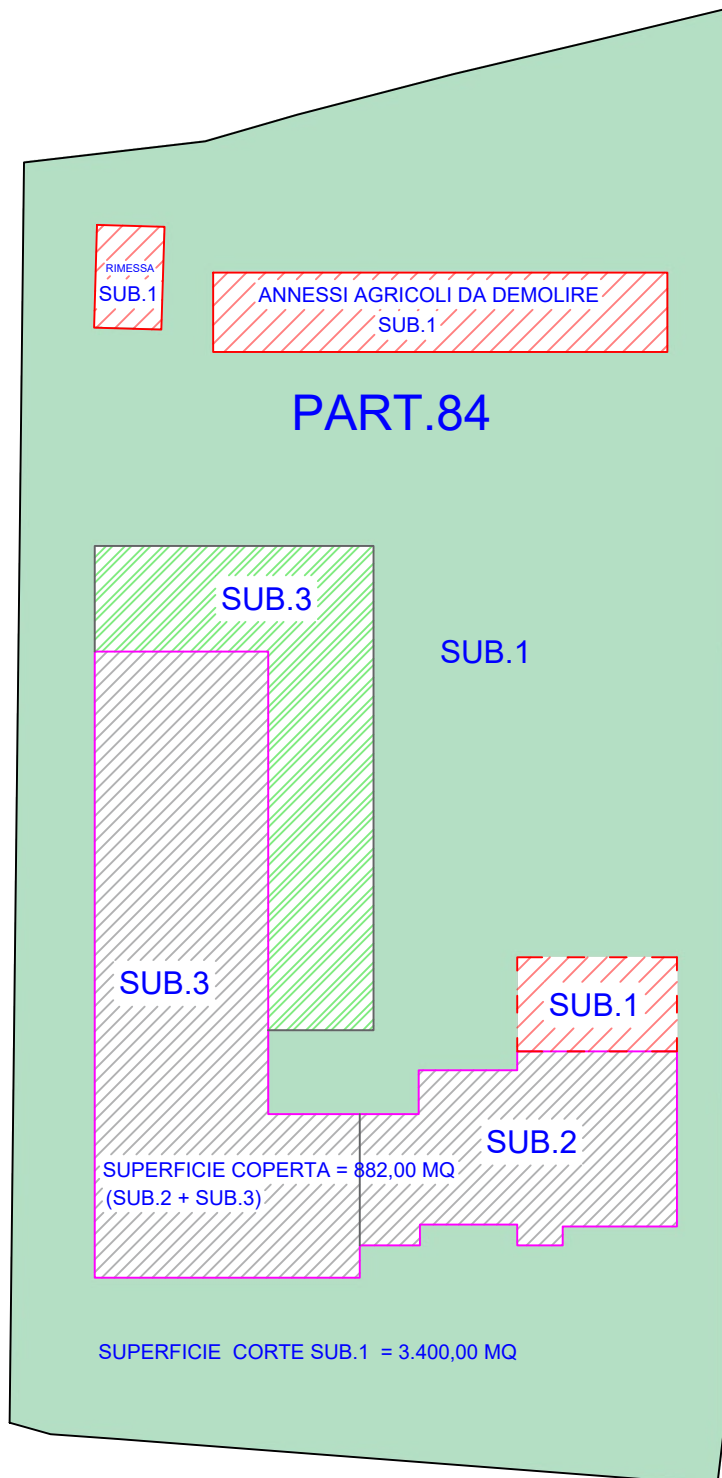
PIANO TERRA

Firmato Da: QUARANTA ANTONINO Emesso Da: ARUBAPEC S.P.A. NG CA.3 Serial#: 5e4352dcd86c1136e30749b06d84460e



**COMUNE DI ANAGNI - FG.66 PART. 84**

**PLANIMETRIA DELLA PART. 84 PIGNORATA - SCALA 1:500**



**OPERE DI COLORE IN ROSSO DA DEMOLIRE**

SUPERFICIE COPERTA (SUB.2+SUB.3)=882,00 MQ

SUPERFICIE CORTE (SUB.1) = 3.400,00 MQ

SUPERFICIE CORTE (SUB.3) = 349,00 MQ

