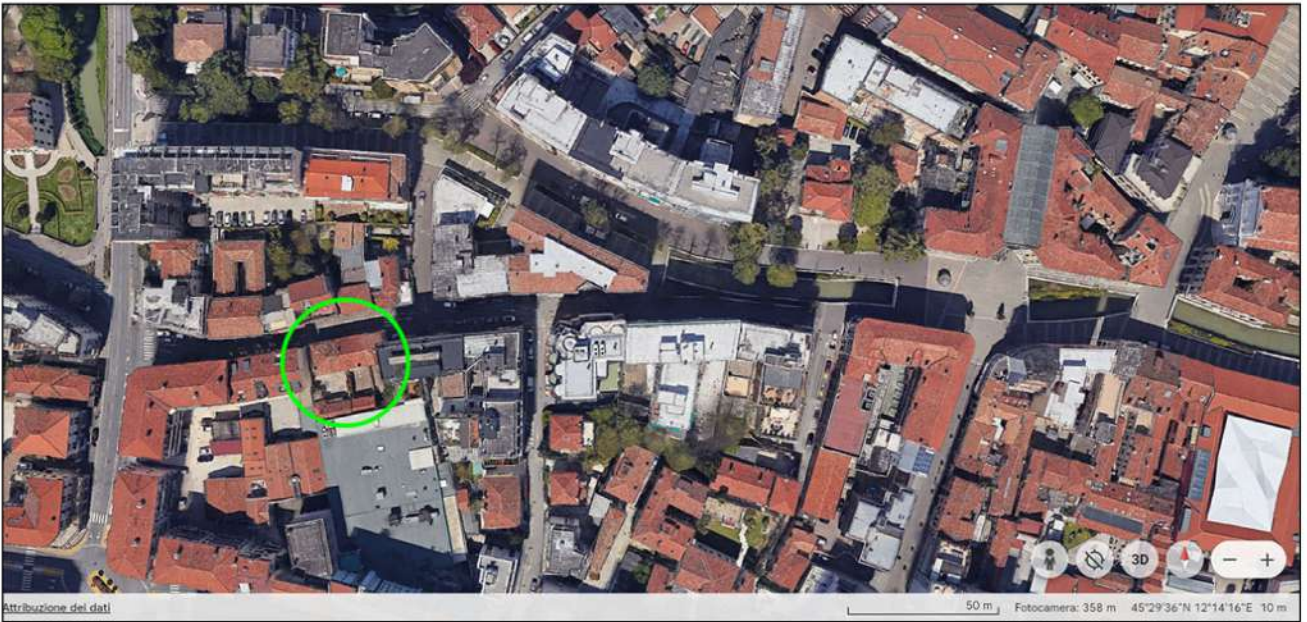


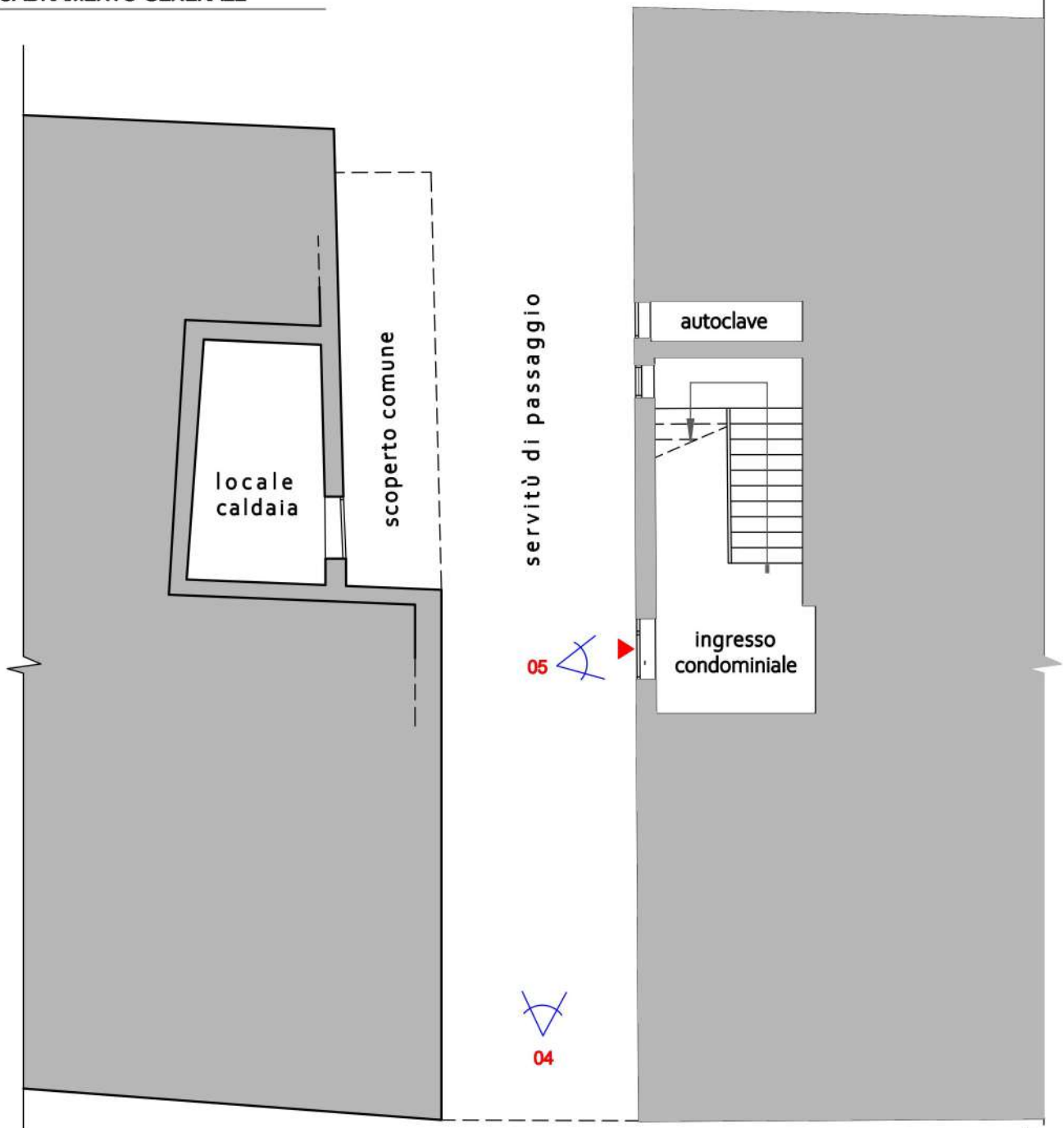
Esecuzione Immobiliare n. 136/2024 - LOTTO UNICO

Allegato 11 - rilievo fotografico



INQUADRAMENTO GENERALE

Esecuzione Immobiliare n. 136 / 2024 - LOTTO UNICO



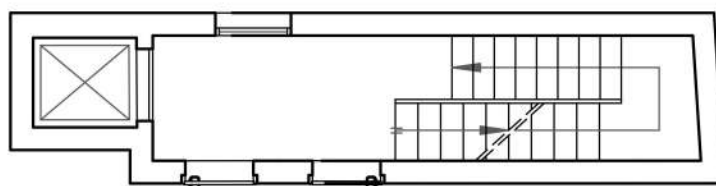
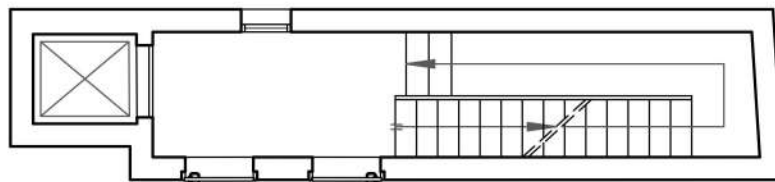
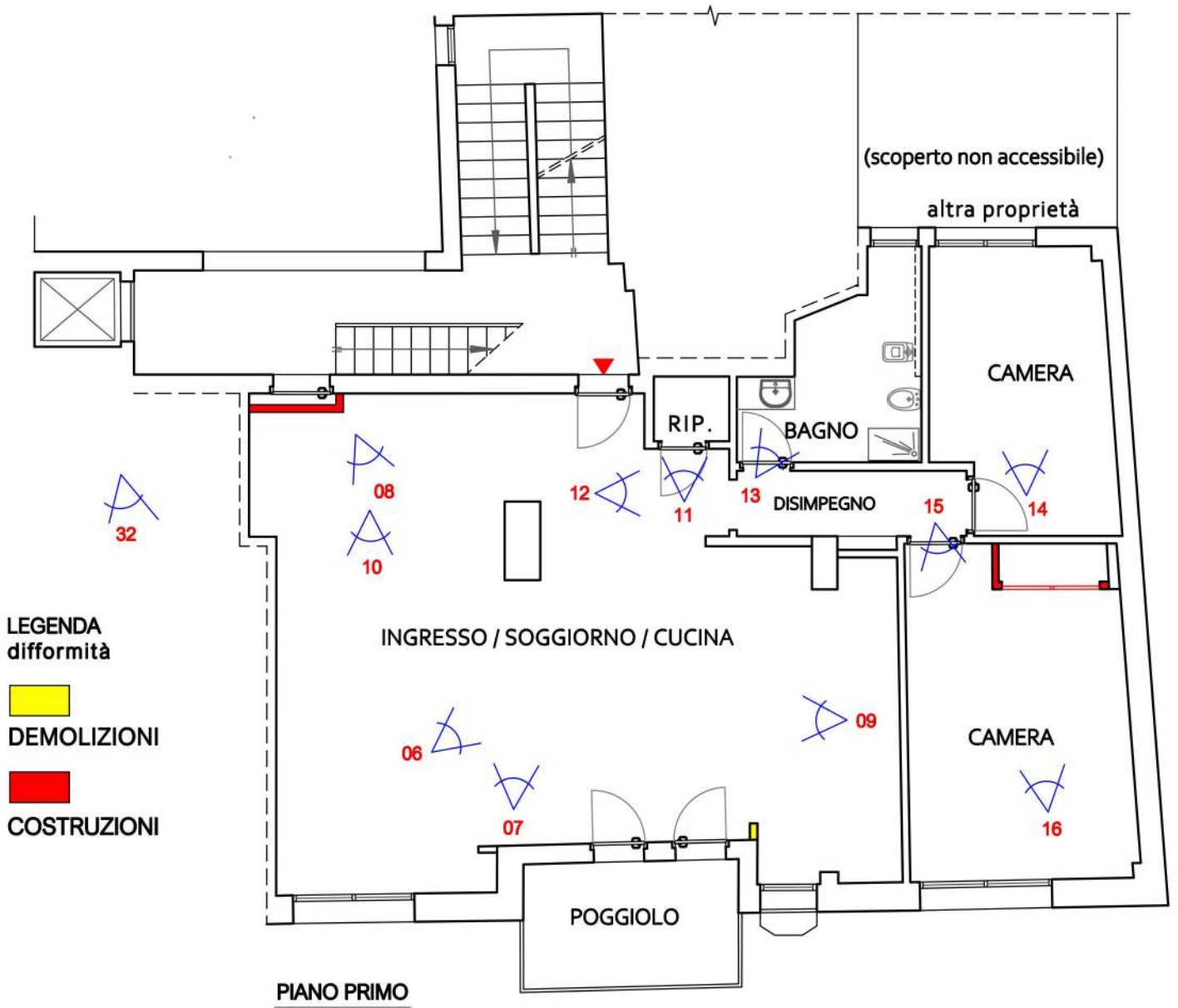
PIANO TERRA

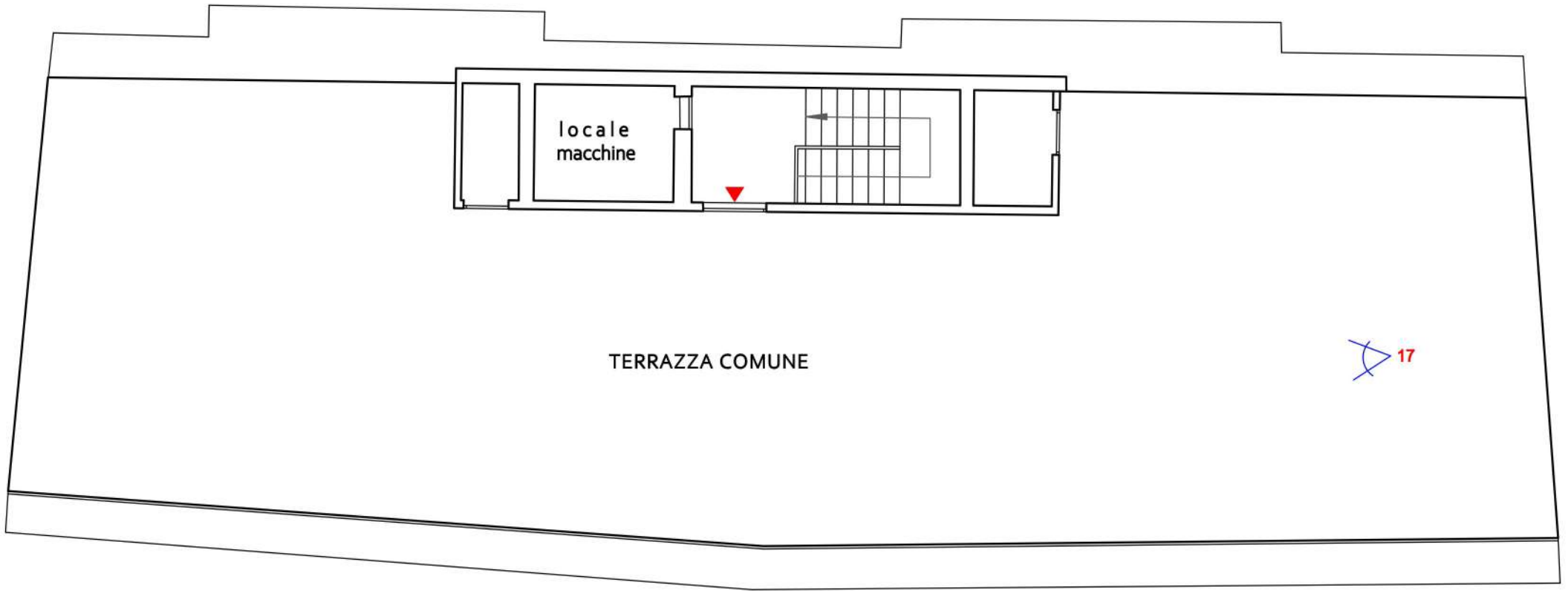
01
02
03



VIA GIUSEPPE VERDI







PIANTA COPERTURA





foto 02 - vista esterna da Via Giuseppe Verdi



foto 03 - Via Giuseppe Verdi



foto 04 - accesso
pedonale da
Via Giuseppe Verdi



foto 05 - ingresso
condominiale

foto 06 - ingresso / soggiorno





foto 07 - ingresso / soggiorno



foto 08 - ingresso / soggiorno

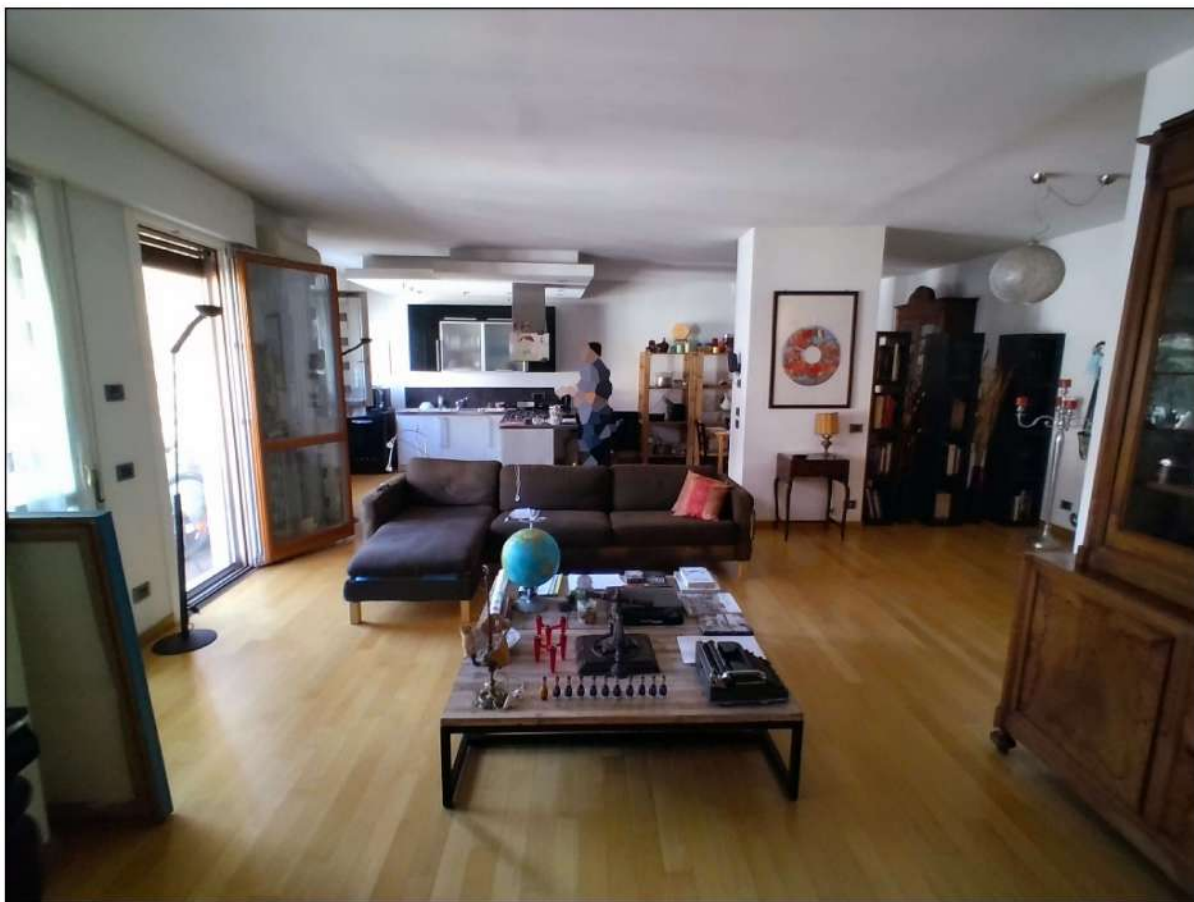


foto 09 - soggiorno

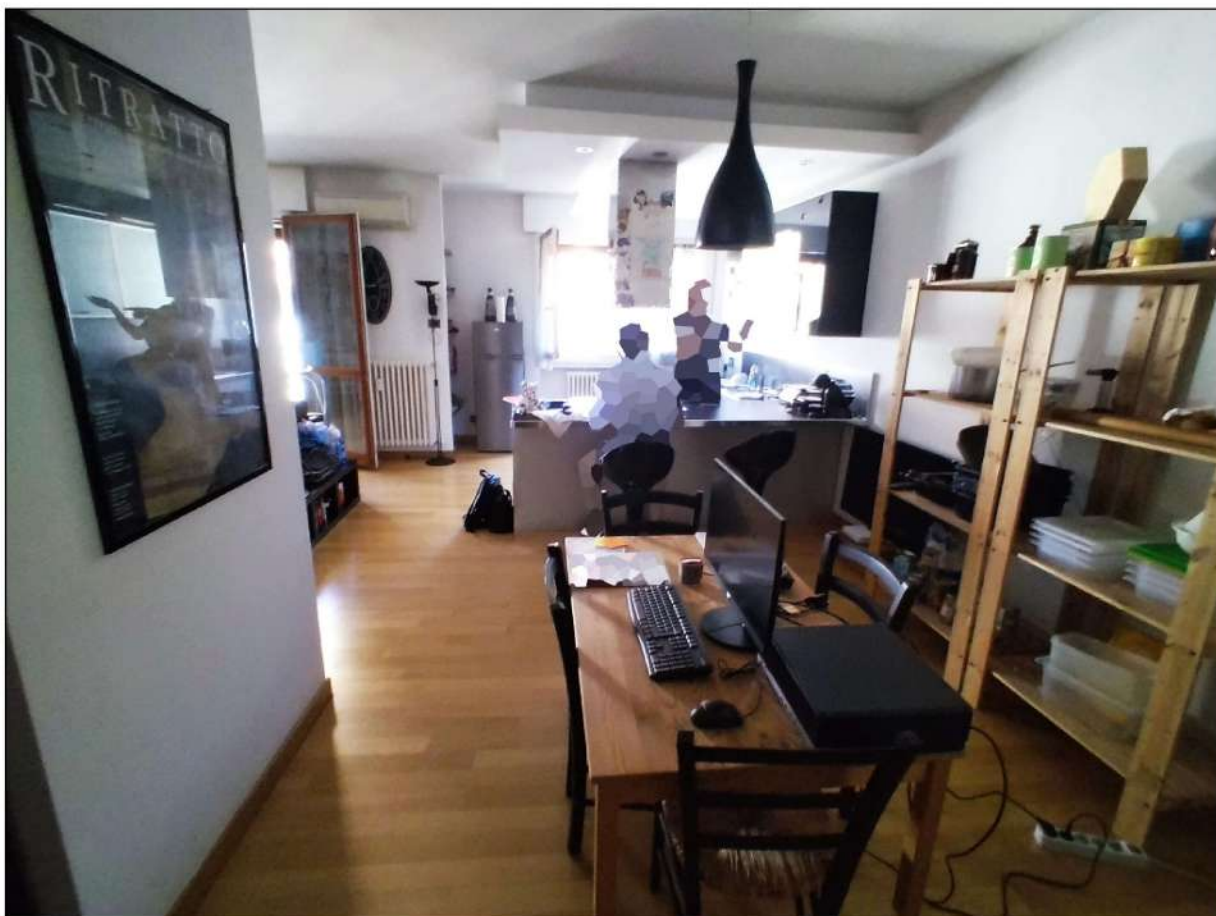


foto 10 - soggiorno / angolo cottura



foto 11 - ripostiglio



foto 12 - disimpegno



foto 13 - bagno



foto 14 - camera



foto 15 - camera



foto 16 - camera



foto 17 - terrazza condominiale