

RILIEVO FOTOGRAFICO II LOTTO DI IMMOBILI PIGNORATI

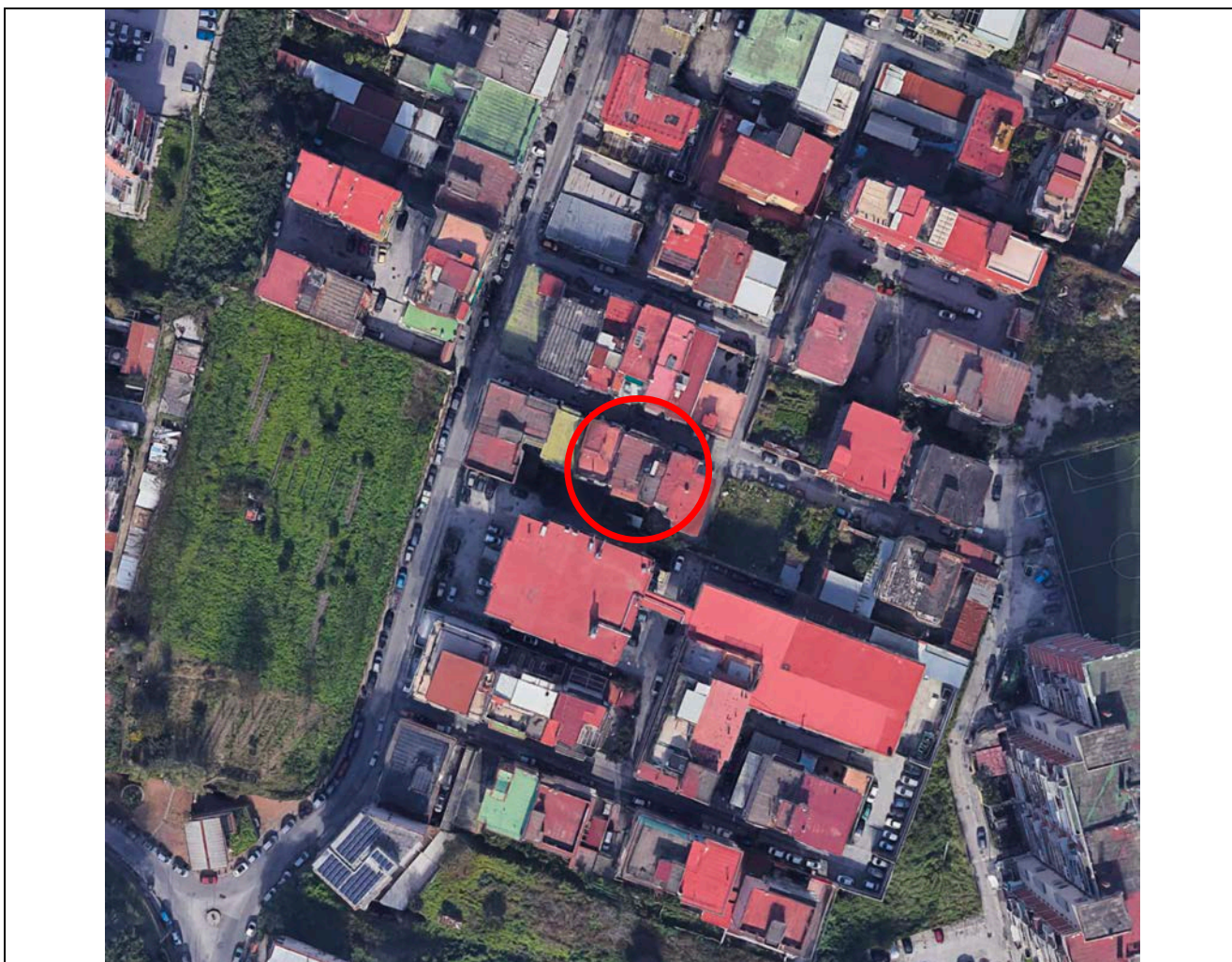


Foto 1: vista satellitare – Fabbricato sito in Napoli, in “Via Cisterne Vecchie” n. 8.



Foto 2: vista satellitare 3D Nord



Foto 3: vista satellitare 3D Sud



Foto 4, 5, 6, 7, 8, 9: Viste fabbricato da Via Cisterne Vecchie



Foto 10, 11, 12, 13, 14: viste ingresso fabbricato, androne e interno scala, ingresso appartamento piano primo

**Appartamento sito in Napoli, alla via Cisterne Vecchie n. 8, piano primo.
 Dati N.C.E.U. Comune di Napoli: SEZ. SCA; Foglio 8; P.lla 674; Sub. 2; Cat A/2; Cons. 6,5 vani. Sup. Cat. Totale
 106 mq; Rendita 772,10.**

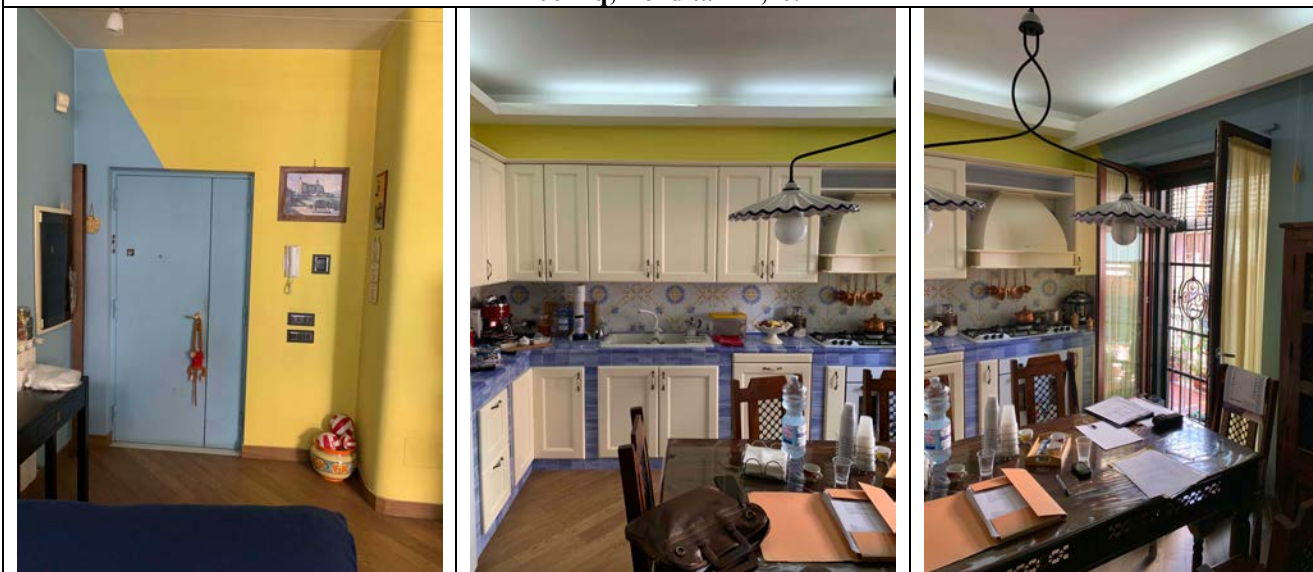


Foto 15, 16, 17: viste Living ingresso-cucina-soggiorno

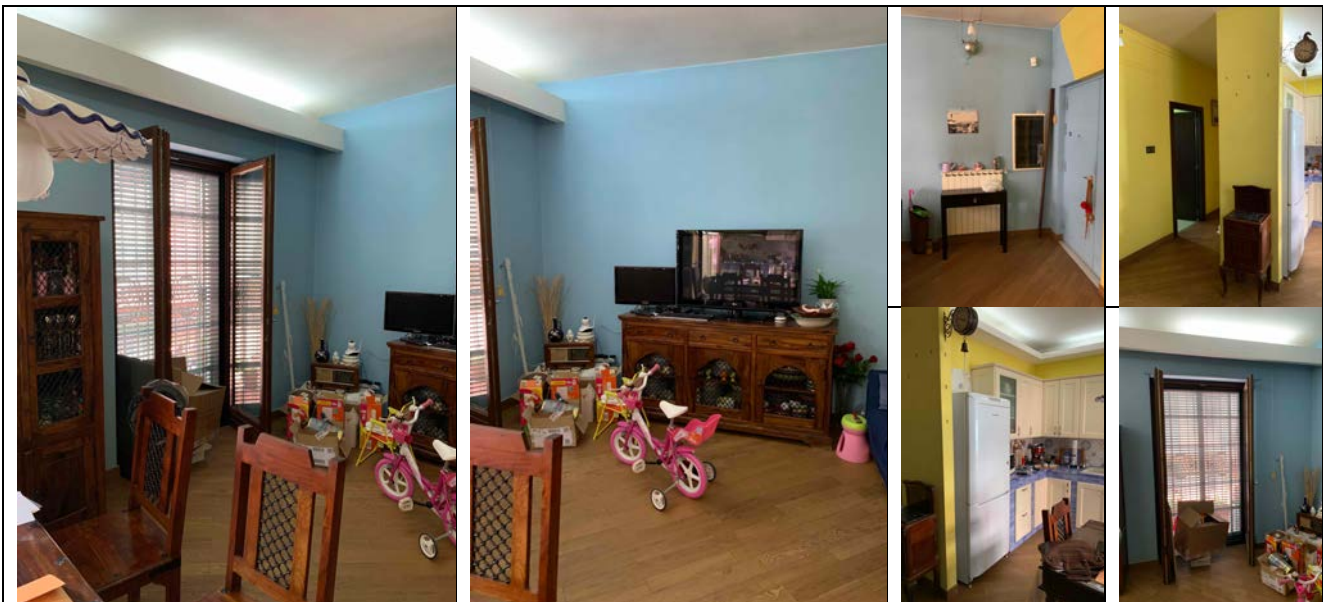


Foto 18, 19, 20, 21, 22, 23: viste Living ingresso-cucina-soggiorno

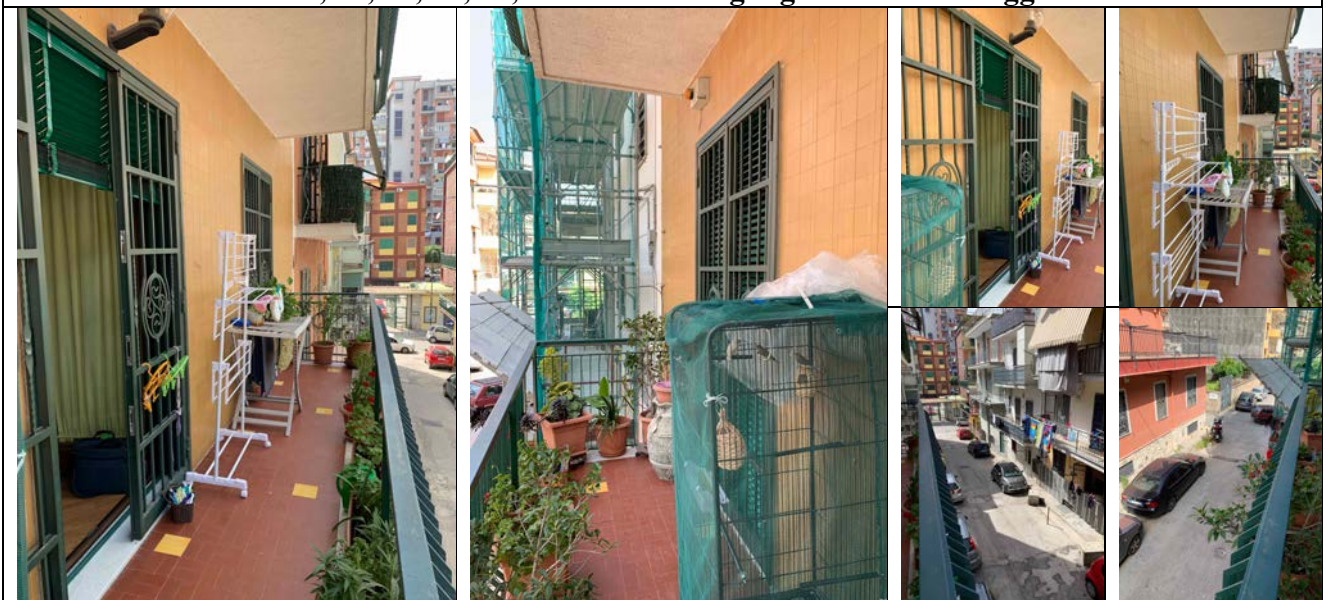


Foto 24, 25, 26, 27, 28, 29: viste Balconata Nord

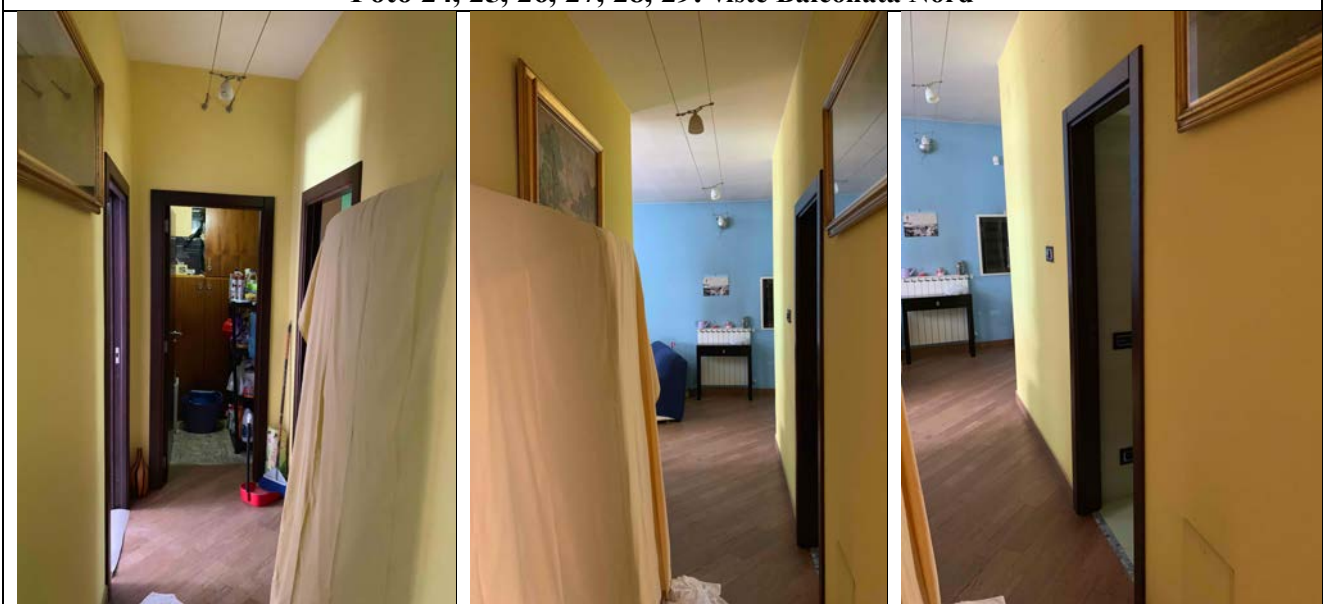


Foto 30, 31, 32: viste Disimpegno



Foto 33, 34, 35, 36, 37, 38: viste W.C. 1



Foto 39, 40, 41, 42, 43, 44: viste Stanza da letto matrimoniale

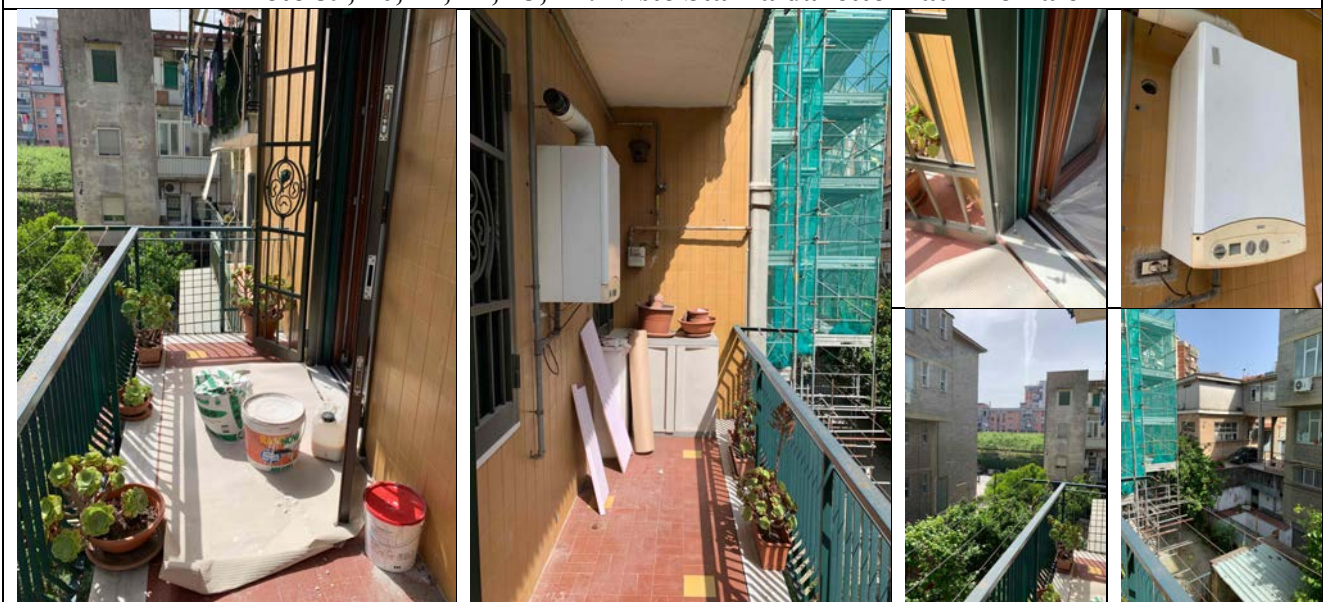


Foto 45, 46, 47, 48, 49, 50: viste Balconata Sud



Foto 51, 52, 53, 54, 55, 56: viste W.C. 2



Foto 57, 58, 59, 60, 61, 62: viste Cabina Armadio



Foto 63, 64, 65: viste Ripostiglio

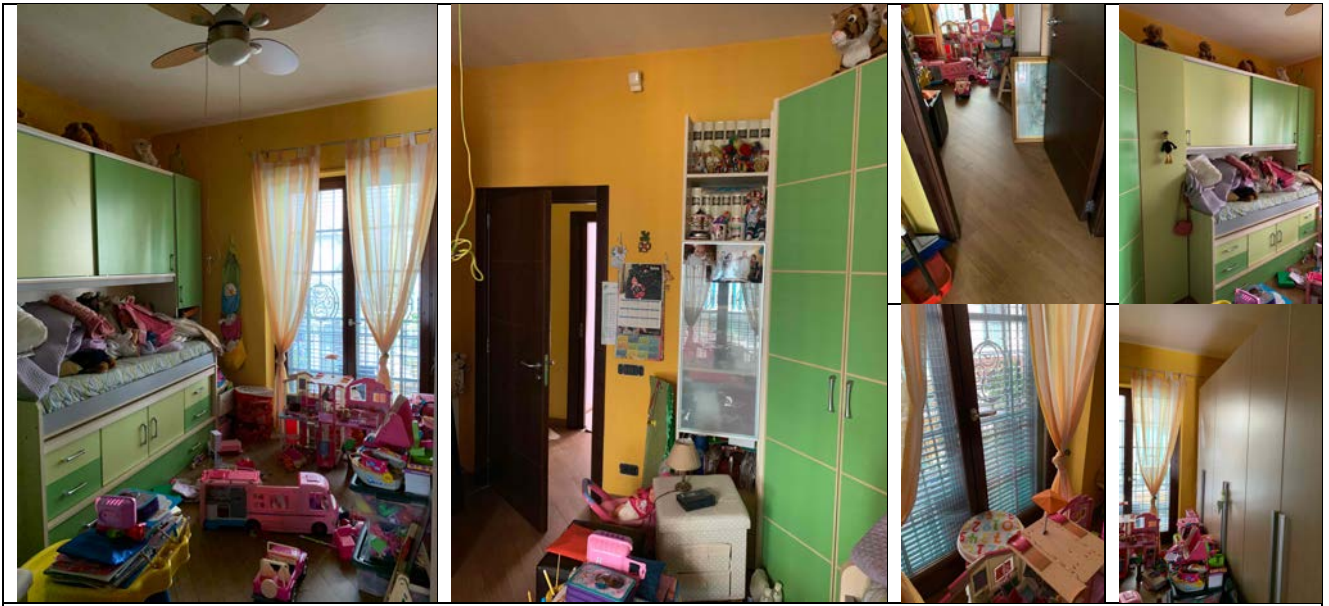


Foto 66, 67, 68, 69, 70, 71: viste Stanzetta