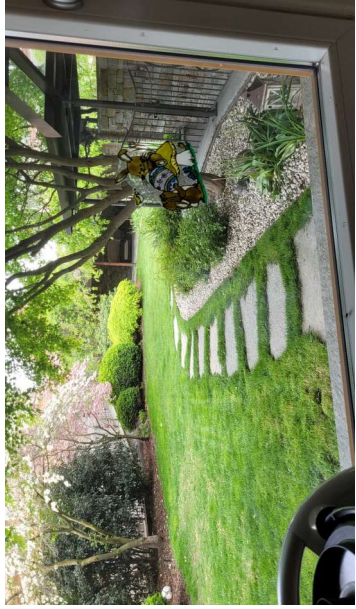
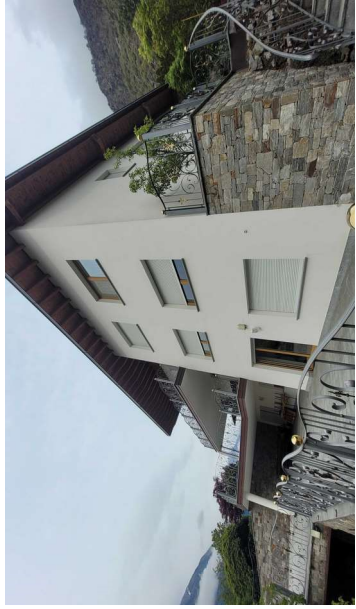


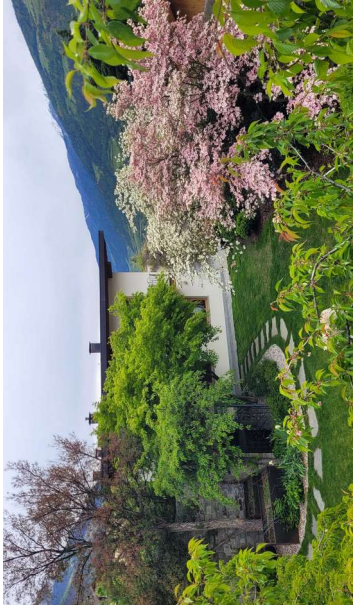
L6_Corpo A_Maso chiuso_00 Esterni (1)



L6_Corpo A_Maso chiuso_00 Esterni (2)



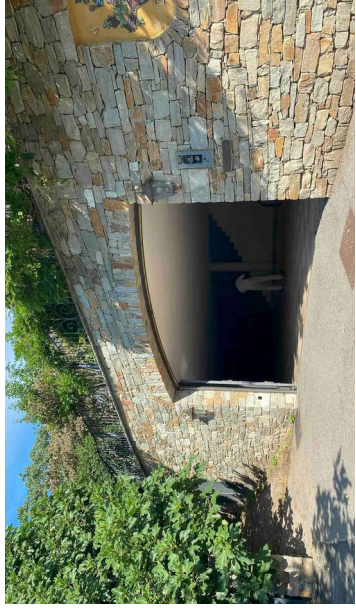
L6_Corpo A_Maso chiuso_00 Esterni (5)



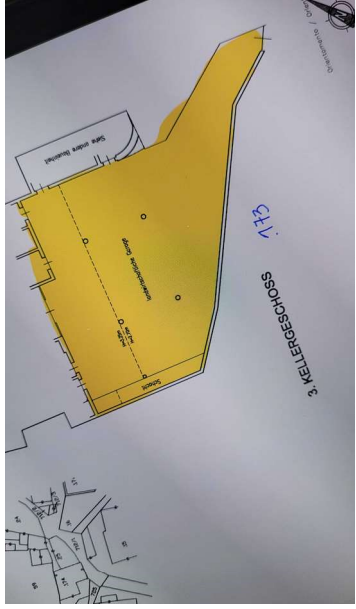
L6_Corpo A_Maso chiuso_00 Esterni (6)



L6_Corpo A_Maso chiuso_00 Esterni (8)



L6_Corpo A_Maso chiuso_00 Esterni (9)



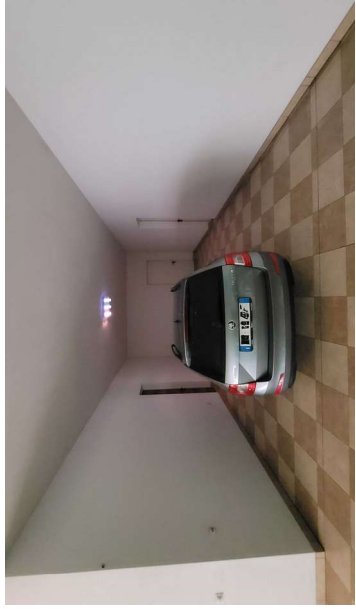
L6_Corpo A_Maso chiuso_01_3. p interrato (1)



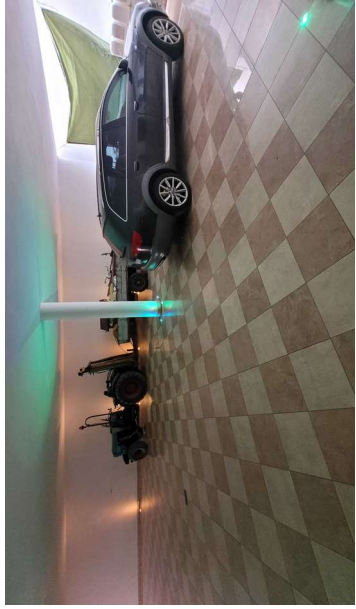
L6_Corpo A_Maso chiuso_01_3. p interrato (2)



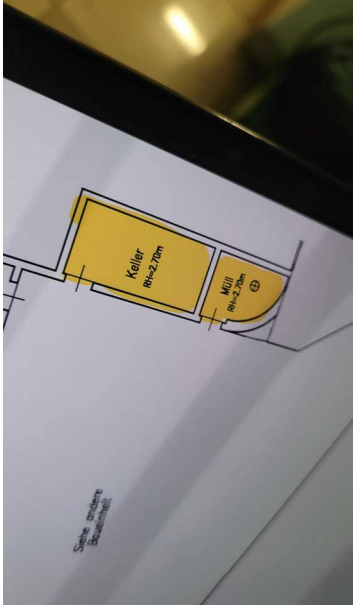
L6_Corpo A_Maso chiuso_01_3. p interrato (3)



L6_Corpo A_Maso chiuso_01_3. p interrato (4)



L6_Corpo A_Maso chiuso_01_3. p interrato (5)



L6_Corpo A_Maso chiuso_01_3. p interrato (6)



L6_Corpo A_Maso chiuso_01 3. p interrato (7)



L6_Corpo A_Maso chiuso_01 3. p interrato (8)



L6_Corpo A_Maso chiuso_01 3. p interrato (9)



L6_Corpo A_Maso chiuso_01 3. p interrato (10)



L6_Corpo A_Maso chiuso_01 3. p interrato (11)



L6_Corpo A_Maso chiuso_01 3. p interrato (12)



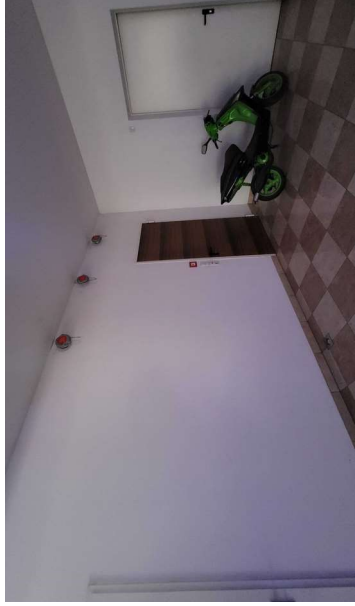
L6_Corpo A_Maso chiuso_01 3. p interrato (13)



L6_Corpo A_Maso chiuso_01 3. p interrato (15)



L6_Corpo A_Maso chiuso_01 3. p interrato (16)



L6_Corpo A_Maso chiuso_01 3. p interrato (17)



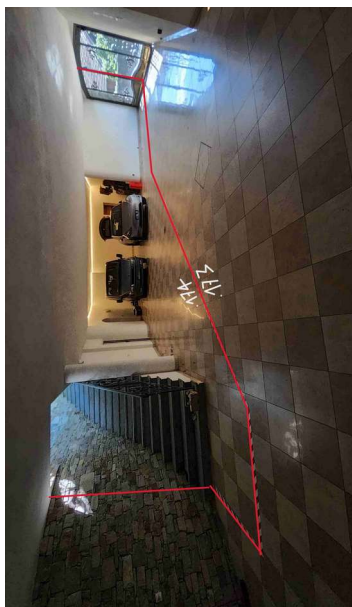
L6_Corpo A_Maso chiuso_01 3. p interrato (18)



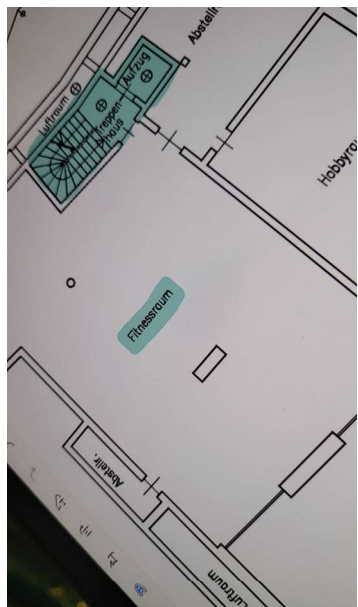
L6_Corpo A_Maso chiuso_01 3. p interrato (19)



L6_Corpo A_Maso chiuso_01 3. p interrato (20)



L6_Corpo A_Maso chiuso_01 3. p interrato_confini



L6_Corpo A_Maso chiuso_02 2. p interrato (1)



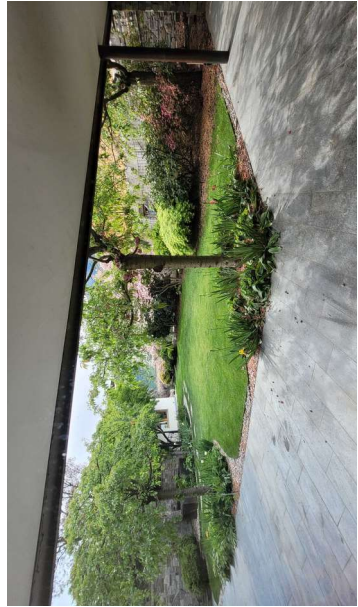
L6_Corpo A_Maso chiuso_02 2. p interrato (2)



L6_Corpo A_Maso chiuso_02 2. p interrato (3)



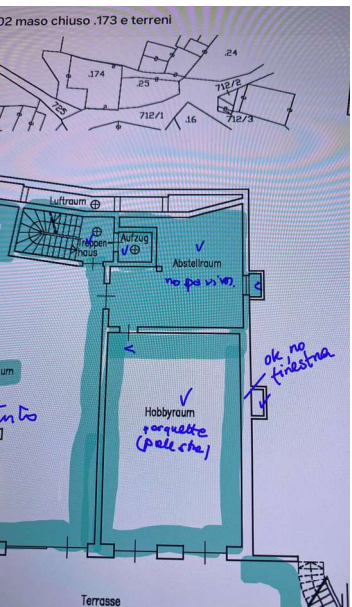
L6_Corpo A_Maso chiuso_02 2. p interrato (4)



L6_Corpo A_Maso chiuso_02 2. p interrato (5)



L6_Corpo A_Maso chiuso_02 2. p interrato (6)



L6_Corpo A_Maso chiuso_02 2. p interrato (7)



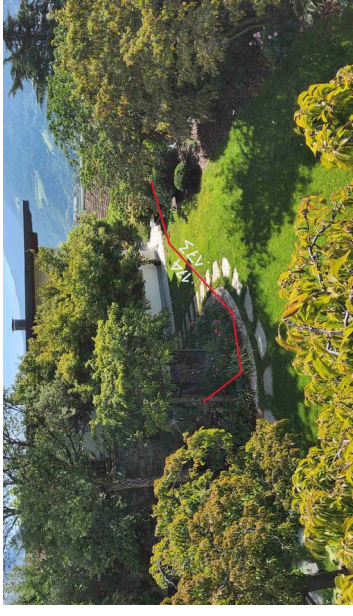
L6_Corpo A_Maso chiuso_02 2. p interrato (8)



L6_Corpo A_Maso chiuso_02 2. p interrato (9)



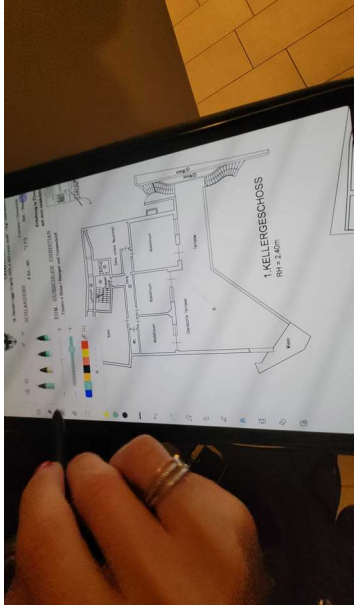
L6_Corpo A_Maso chiuso_02 2. p interrato (10)



L6_Corpo A_Maso chiuso_02 2. p interrato_confini



L6_Corpo A_Maso chiuso_03 1. p interrato (1)



L6_Corpo A_Maso chiuso_03 1. p interrato (2)



L6_Corpo A_Maso chiuso_03 1. p interrato (3)



L6_Corpo A_Maso chiuso_03 1. p interrato (4)



L6_Corpo A_Maso chiuso_03 1. p interrato (5)



L6_Corpo A_Maso chiuso_03 1. p interrato (6)



L6_Corpo A_Maso chiuso_03 1. p interrato (8)



L6_Corpo A_Maso chiuso_03 1. p interrato (9)



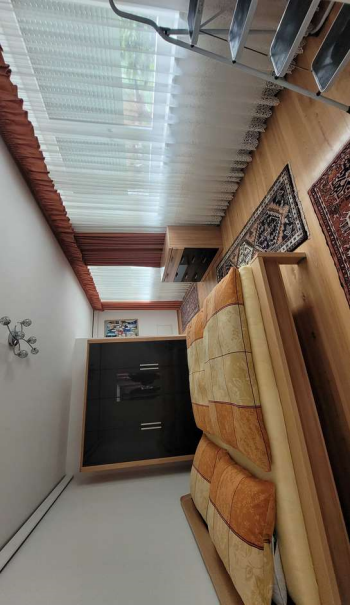
L6_Corpo A_Maso chiuso_03 1. p interrato (10)



L6_Corpo A_Maso chiuso_03 1. p interrato (11)



L6_Corpo A_Maso chiuso_03 1. p interrato (12)



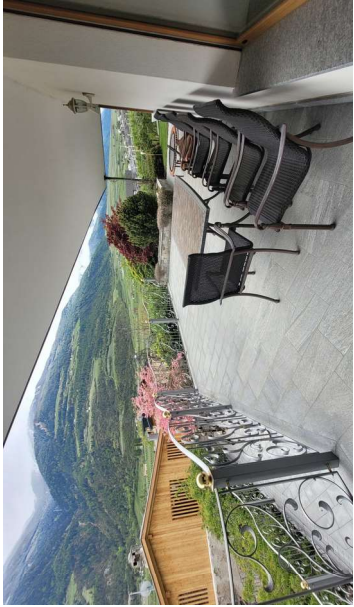
L6_Corpo A_Maso chiuso_04 p. terra (7)



L6_Corpo A_Maso chiuso_04 p. terra (8)



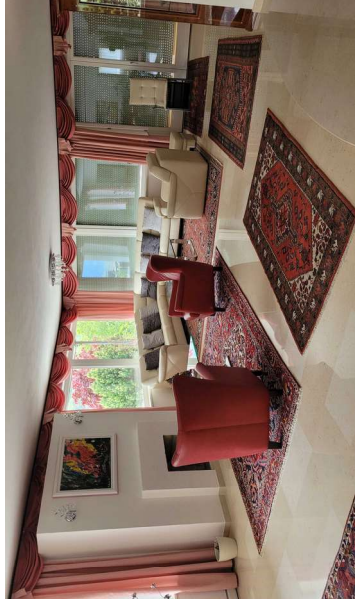
L6_Corpo A_Maso chiuso_04 p. terra (9)



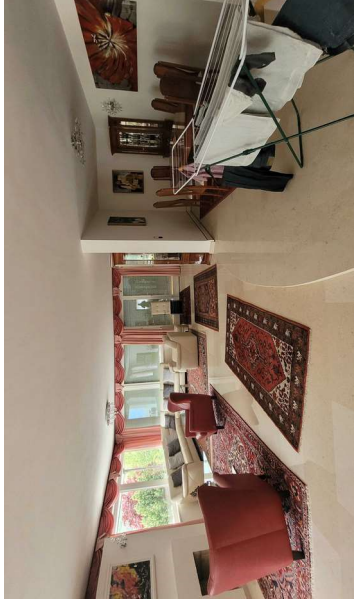
L6_Corpo A_Maso chiuso_04 p. terra (10)



L6_Corpo A_Maso chiuso_04 p. terra (3)



L6_Corpo A_Maso chiuso_04 p. terra (4)



L6_Corpo A_Maso chiuso_04 p. terra (5)



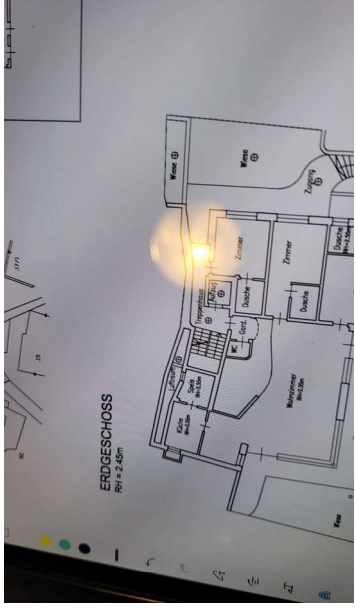
L6_Corpo A_Maso chiuso_04 p. terra (6)



L6_Corpo A_Maso chiuso_03 1. p interrato (13)



L6_Corpo A_Maso chiuso_03 1. p interrato (14)



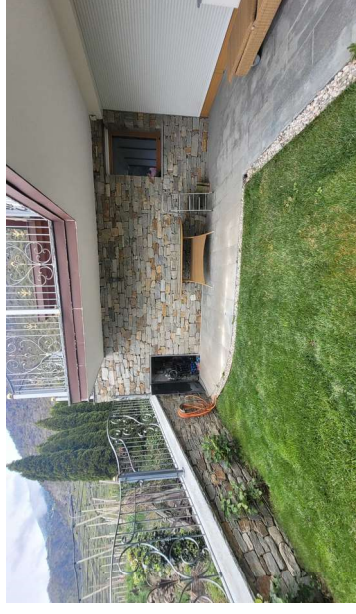
L6_Corpo A_Maso chiuso_04 p. terra (1)



L6_Corpo A_Maso chiuso_04 p. terra (2)



L6_Corpo A_Maso chiuso_04 p. terra (11)



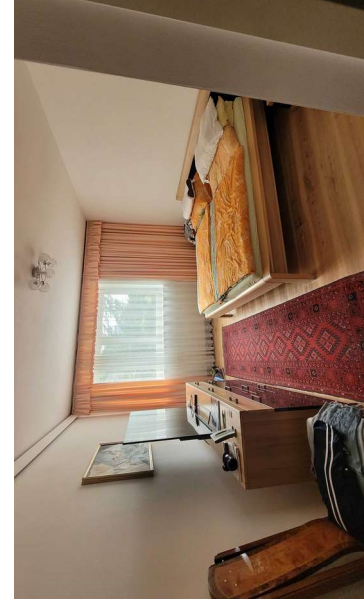
L6_Corpo A_Maso chiuso_04 p. terra (12)



L6_Corpo A_Maso chiuso_04 p. terra (13)



L6_Corpo A_Maso chiuso_04 p. terra (14)



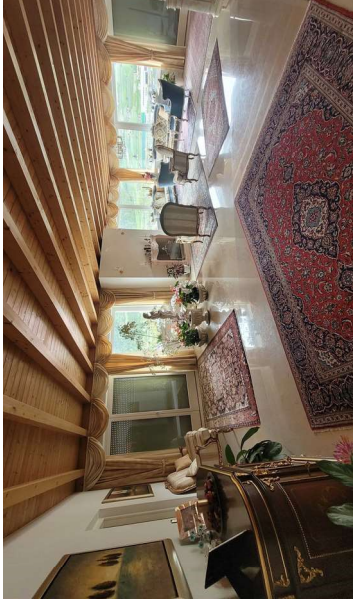
L6_Corpo A_Maso chiuso_04 p. terra (15)



L6_Corpo A_Maso chiuso_05 primo piano (1)



L6_Corpo A_Maso chiuso_05 primo piano (2)



L6_Corpo A_Maso chiuso_05 primo piano (3)



L6_Corpo A_Maso chiuso_05 primo piano (5)



L6_Corpo A_Maso chiuso_05 primo piano (6)



L6_Corpo A_Maso chiuso_05 primo piano (7)



L6_Corpo A_Maso chiuso_05 primo piano (8)



L6_Corpo B_terreni Via al Bivio (1)



L6_Corpo B_terreni Via al Bivio (2)



L6_Corpo B_terreni Via al Bivio (3)



L6_Corpo B_terreni Via al Bivio (4)



L6_Corpo A_Maso chiuso_05 primo piano (14)



L6_Corpo A_Maso chiuso_05 primo piano (18)



L6_Corpo A_Maso chiuso_05 primo piano (19)



L6_Corpo A_Maso chiuso_06 Dettagli (1)



L6_Corpo A_Maso chiuso_05 primo piano (10)



L6_Corpo A_Maso chiuso_05 primo piano (11)



L6_Corpo A_Maso chiuso_05 primo piano (12)



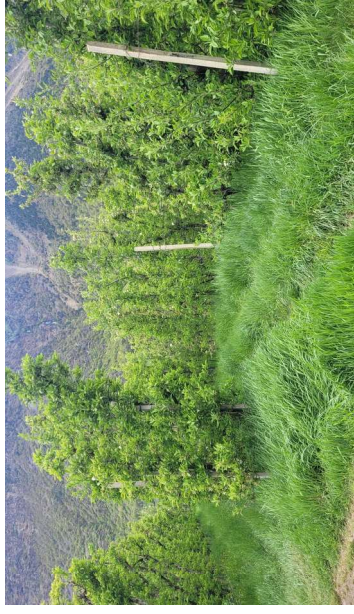
L6_Corpo A_Maso chiuso_05 primo piano (13)



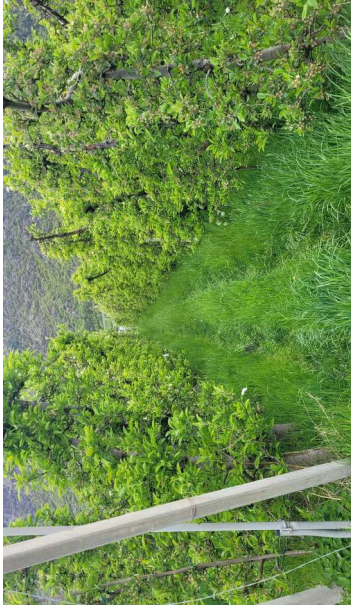
L6_Corpo B_terreni Via al Bivio (5)



L6_Corpo B_terreni Via al Bivio (6)



L6_Corpo B_terreni Via al Bivio (7)



L6_Corpo B_terreni Via al Bivio (8)



L6_Corpo B_terreni Via al Bivio (9)



L6_Corpo B_terreni Via al Bivio (10)



L6_Corpo B_terreni Via al Bivio (11)



L6_Corpo B_terreni Via al Bivio (12)



L6_Corpo B_terreni Via al Bivio (13)



L6_Corpo B_terreni Via al Bivio (14)



L6_Corpo B_terreni Via al Bivio (15)



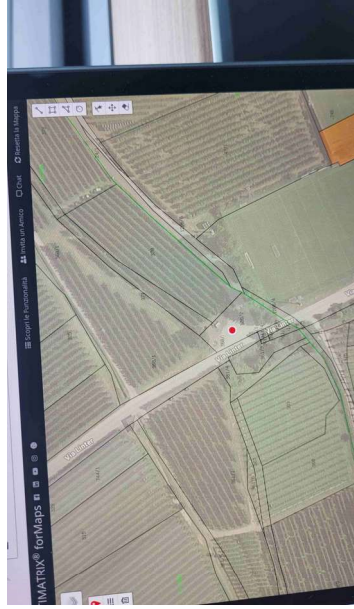
L6_Corpo B_terreni Via al Bivio (16)



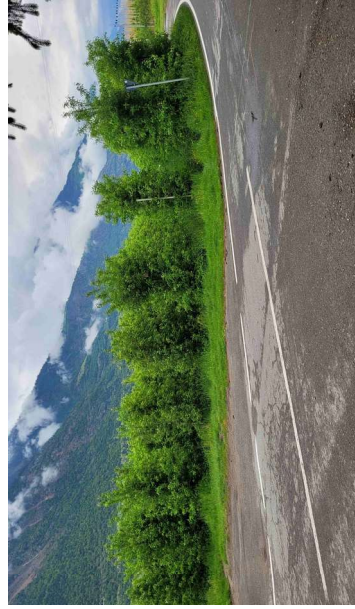
L6_Corpo B_terreni Via al Bivio_Dettagli piante (3)



L6_Corpo B_terreni Via al Bivio_Dettagli piante (4)



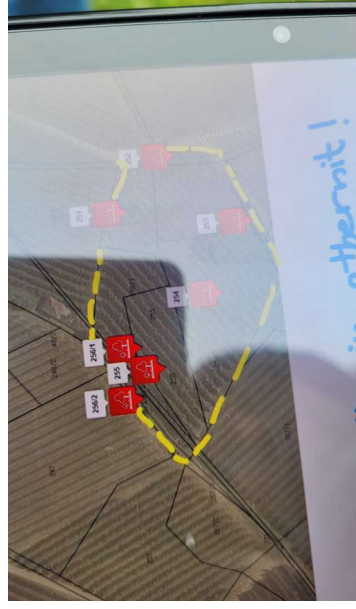
L6_Corpo C_terreni Via Lintner (1)



L6_Corpo C_terreni Via Lintner (2)



L6_Corpo B_terreni Via al Bivio (21)



L6_Corpo B_terreni Via al Bivio (22)



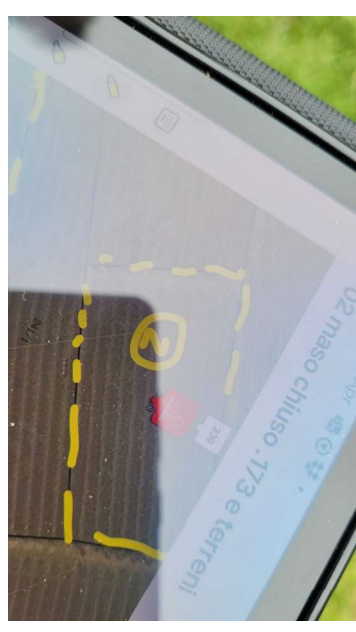
L6_Corpo B_terreni Via al Bivio_Dettagli piante (1)



L6_Corpo B_terreni Via al Bivio_Dettagli piante (2)



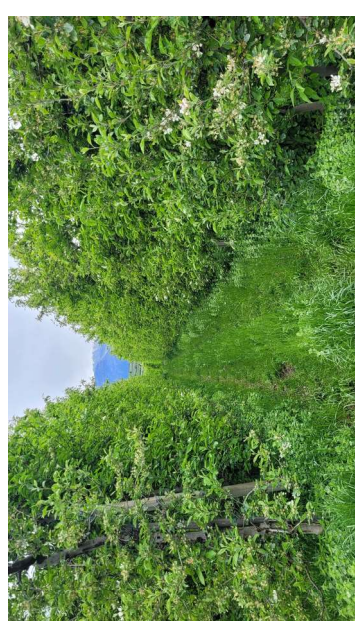
L6_Corpo B_terreni Via al Bivio (17)



L6_Corpo B_terreni Via al Bivio (18)



L6_Corpo B_terreni Via al Bivio (19)



L6_Corpo B_terreni Via al Bivio (20)



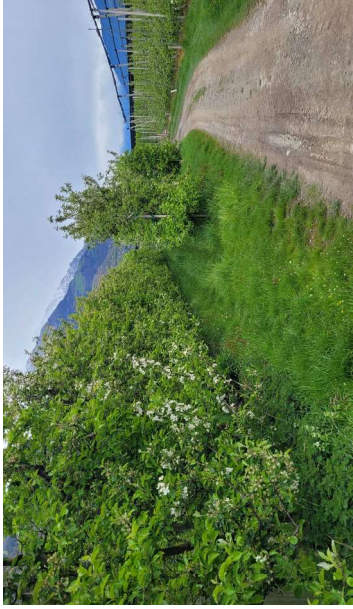
L6_Corpo C_terreni Via Lintner_Dettaglio piante (3)



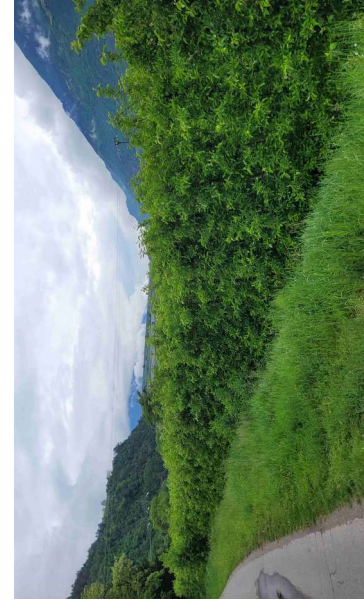
L6_Corpo C_terreni Via Lintner_Dettaglio piante (4)



L6_Corpo D_terreni lungo SS38 (1)



L6_Corpo D_terreni lungo SS38 (2)



L6_Corpo C_terreni Via Lintner (9)



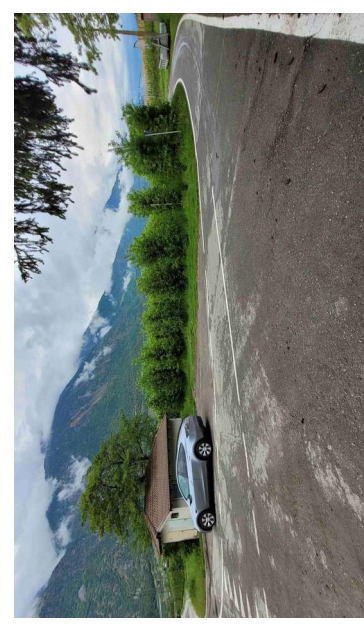
L6_Corpo C_terreni Via Lintner



L6_Corpo C_terreni Via Lintner_Dettaglio piante (1)



L6_Corpo C_terreni Via Lintner_Dettaglio piante (2)



L6_Corpo C_terreni Via Lintner (3)



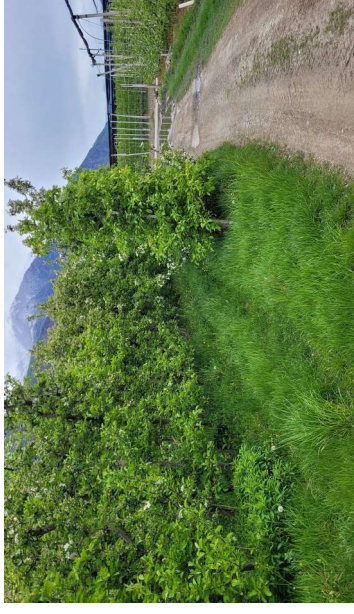
L6_Corpo C_terreni Via Lintner (4)



L6_Corpo C_terreni Via Lintner (6)



L6_Corpo C_terreni Via Lintner (7)



L6_Corpo D_terreni lungo SS38 (3)



L6_Corpo D_terreni lungo SS38 (4)



L6_Corpo D_terreni lungo SS38 (5)



L6_Corpo D_terreni lungo SS38 (6)



L6_Corpo D_terreni lungo SS38 (7)



L6_Corpo D_terreni lungo SS38 (8)



L6_Corpo D_terreni lungo SS38 (9)



L6_Corpo D_terreni lungo SS38 (10)



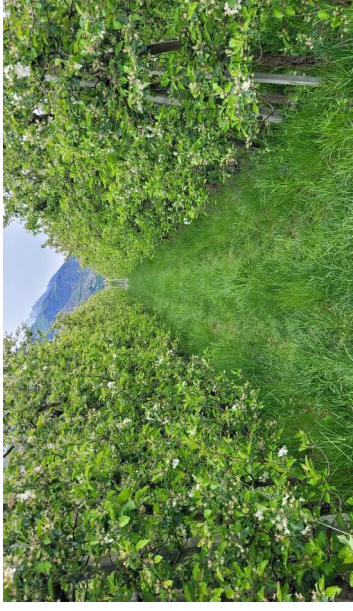
L6_Corpo D_terreni lungo SS38 (11)



L6_Corpo D_terreni lungo SS38 (12)



L6_Corpo D_terreni lungo SS38 (14)



L6_Corpo D_terreni lungo SS38 (15)