

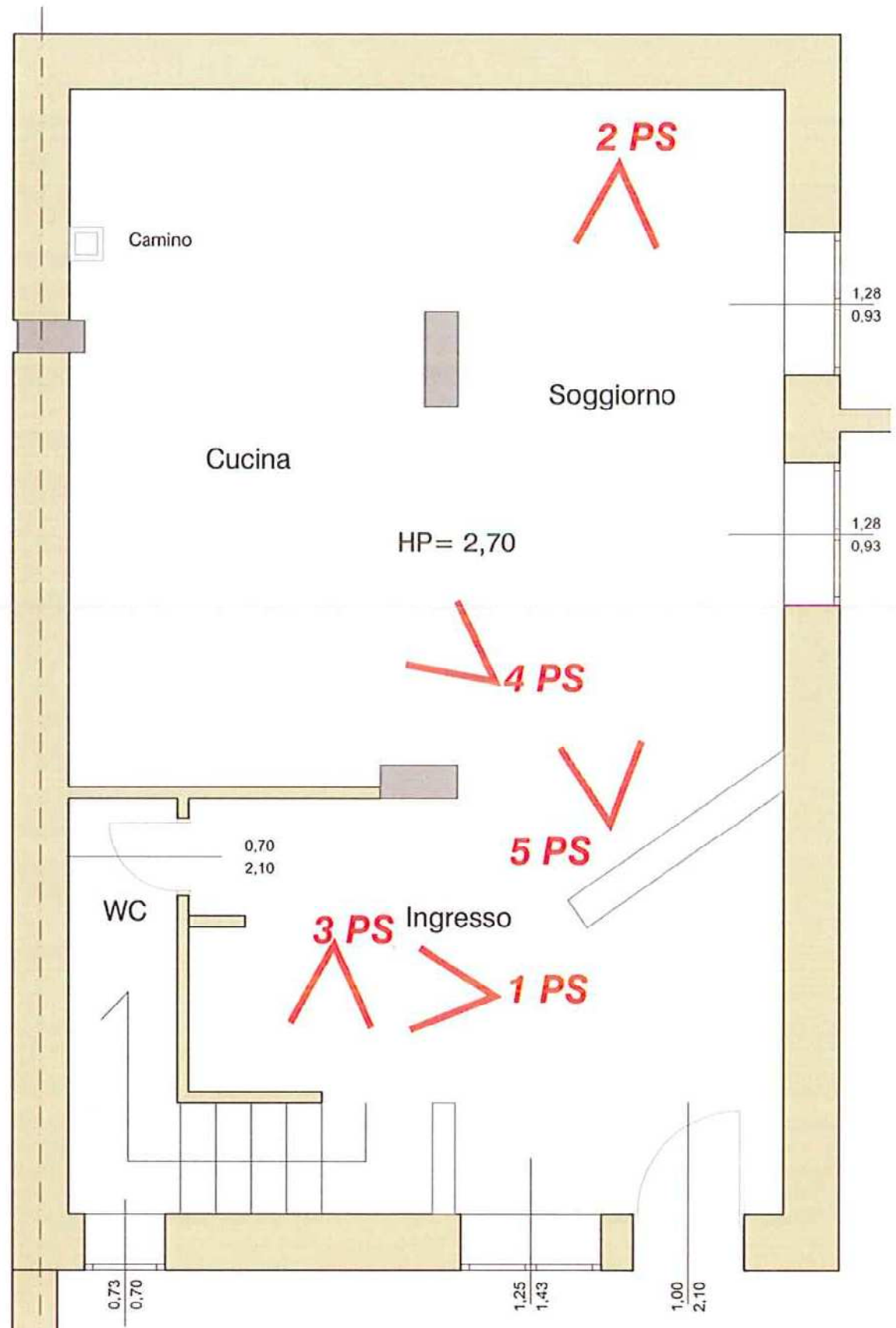
TRIBUNALE DI AVELLINO -SEZIONE CIVILE-
"Ufficio Esecuzioni Immobiliari"
G.Es.dott. Gaetano Guglielmo
procedimento n° 330/2014 R.G.Es.

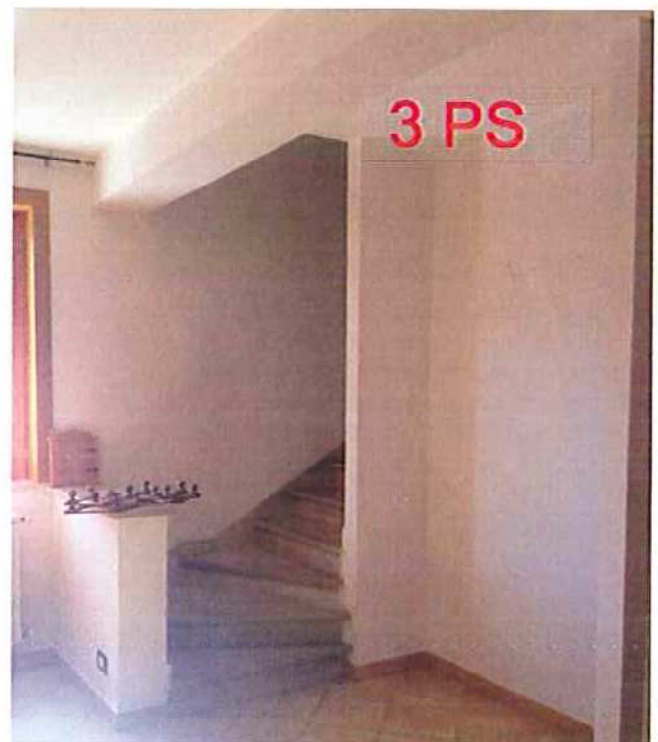
RF

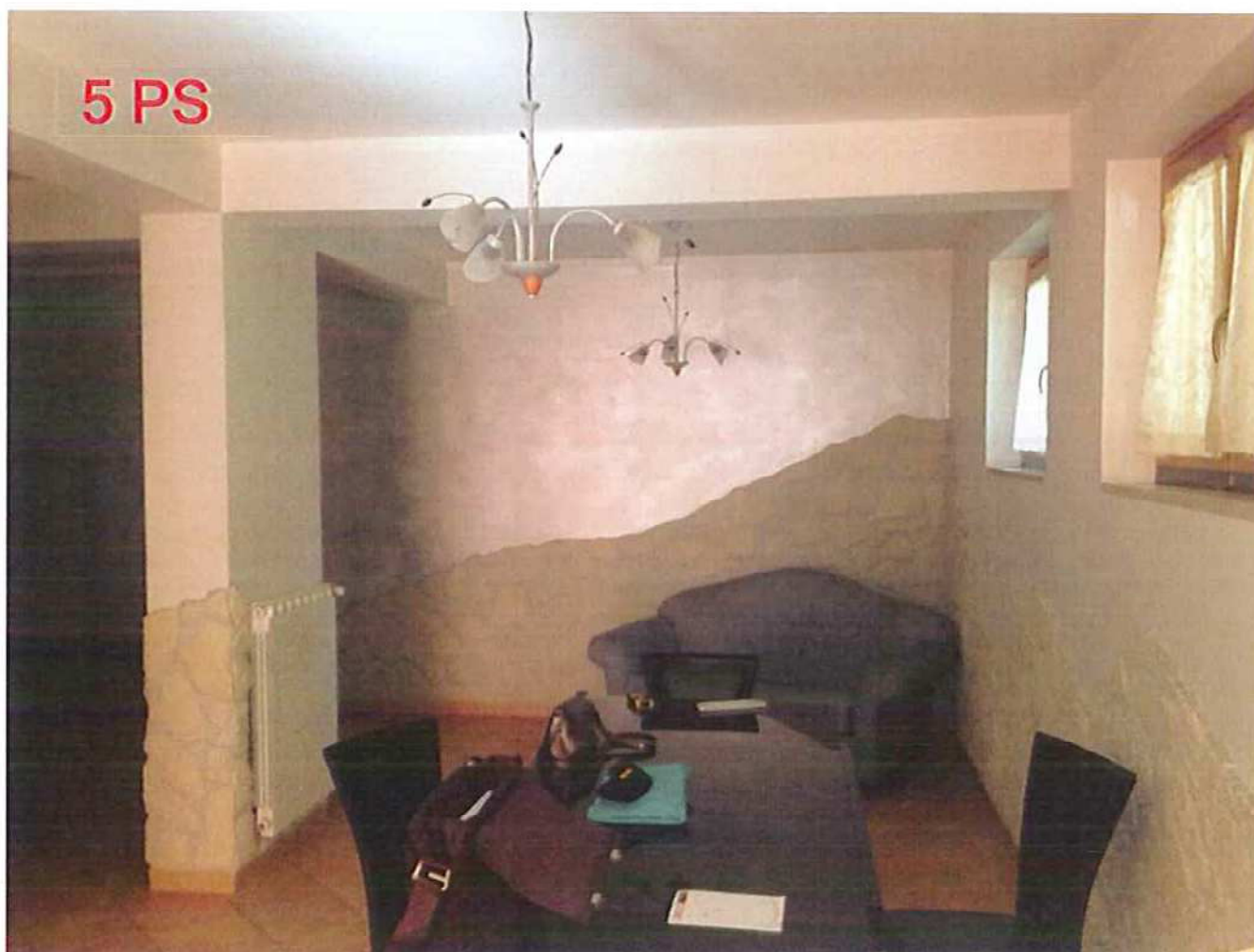
Rilievo fotografico



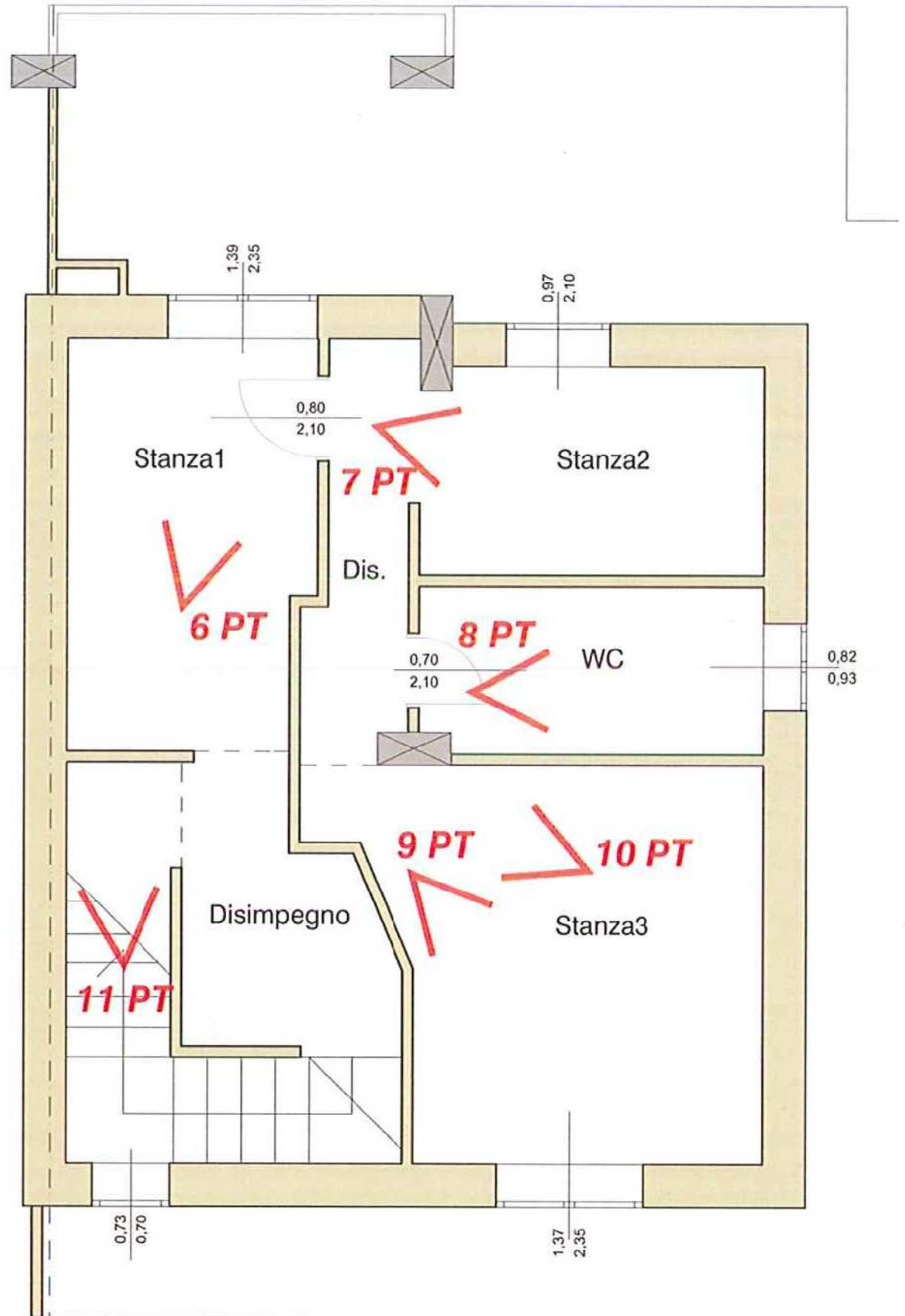
RILIEVO FOTOGRAFICO PIANO S1

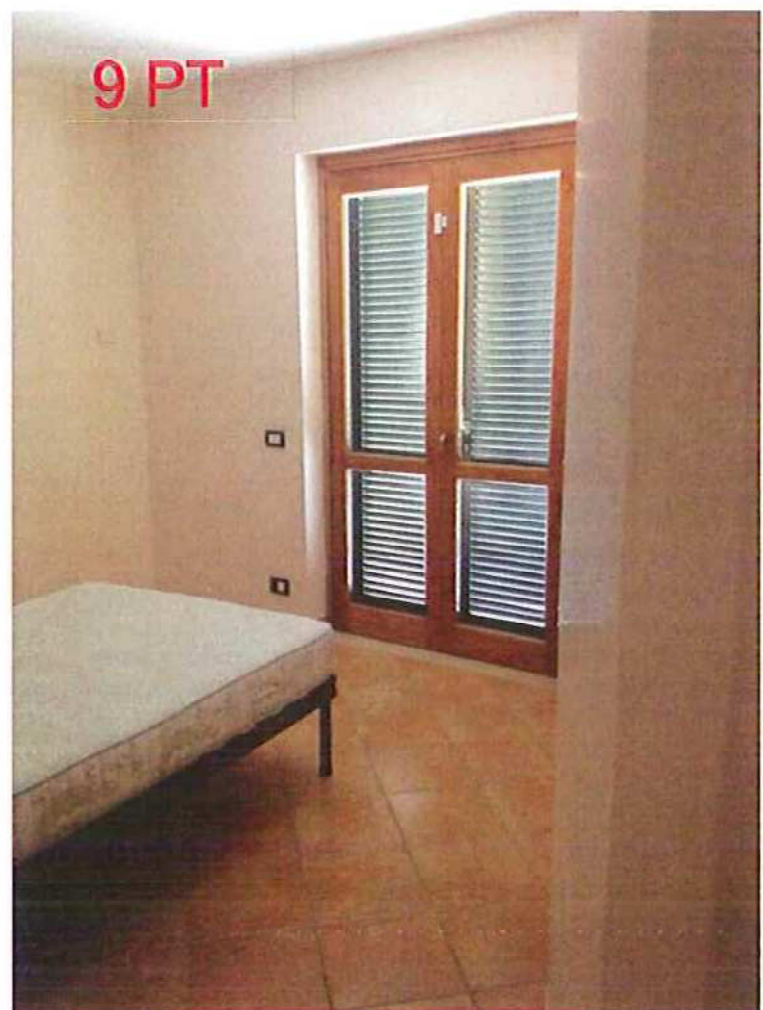


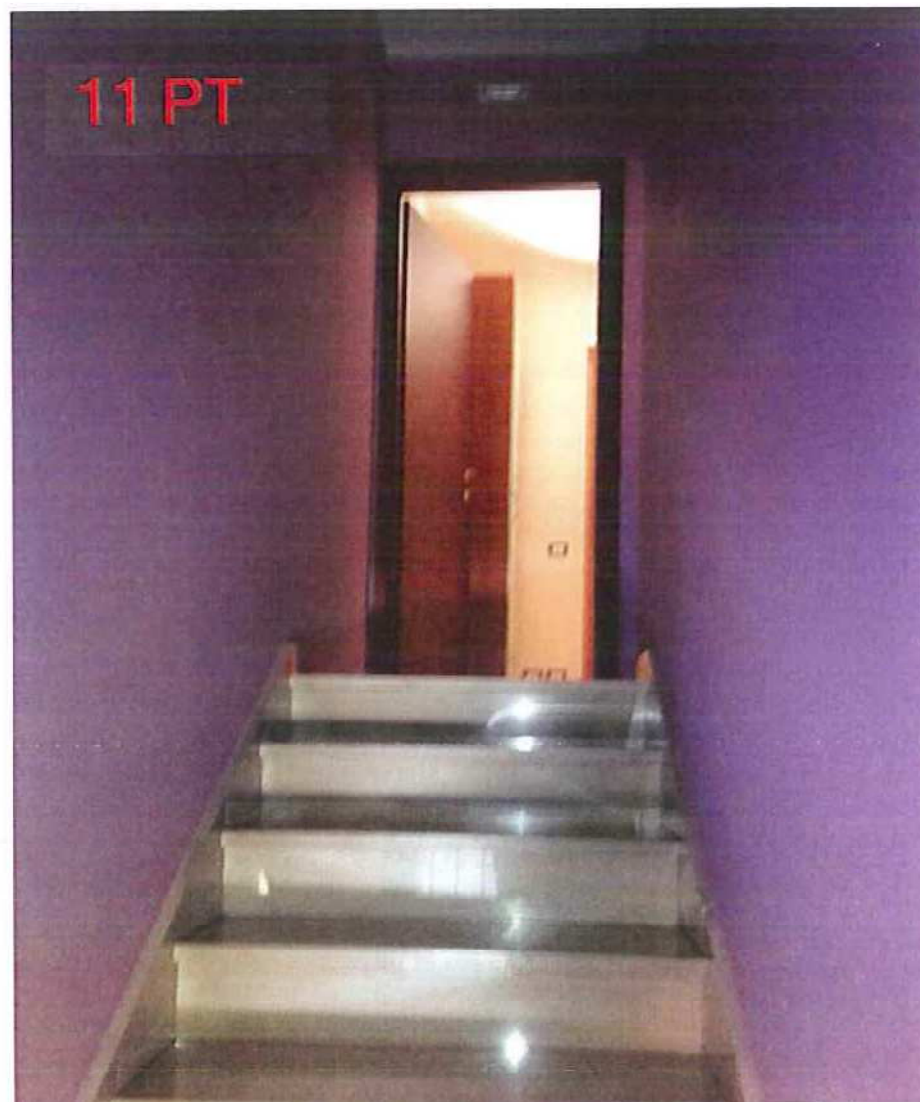
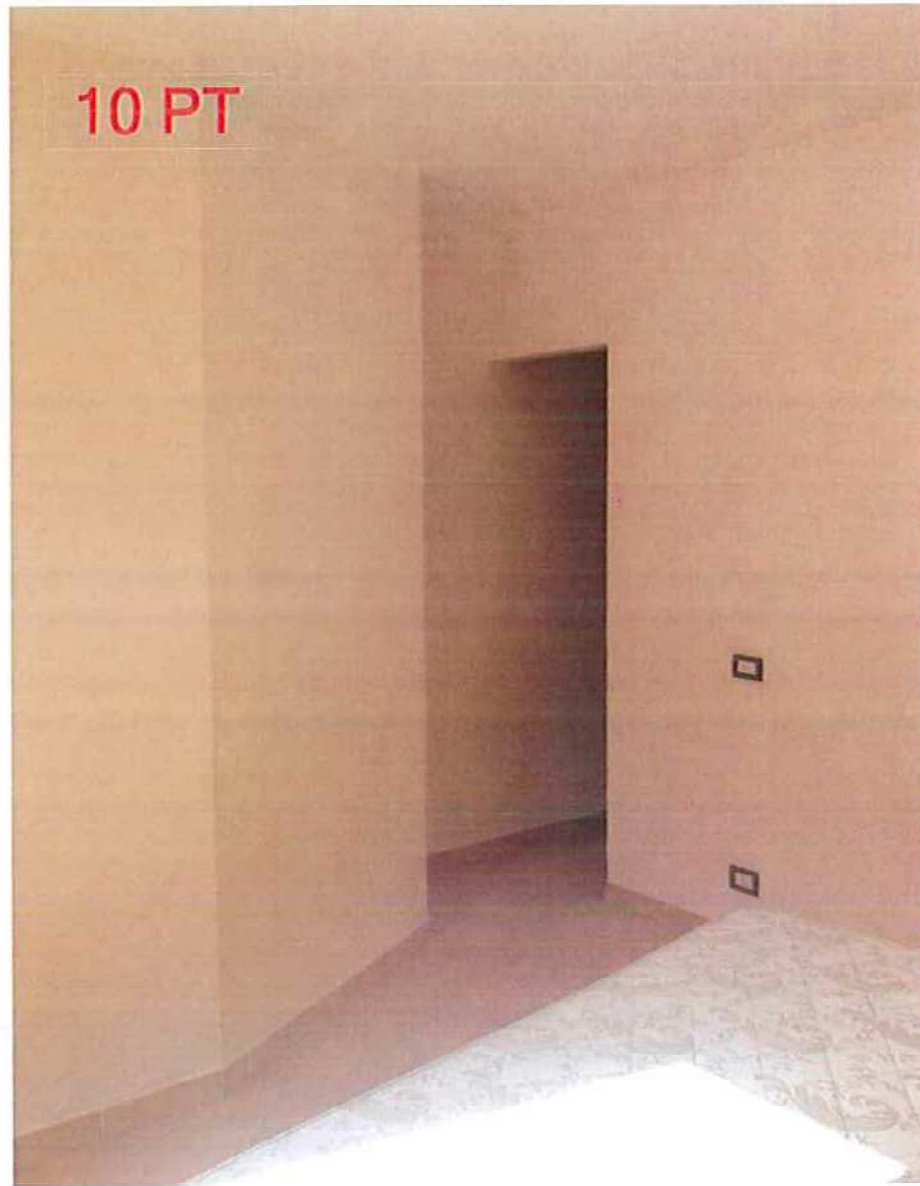




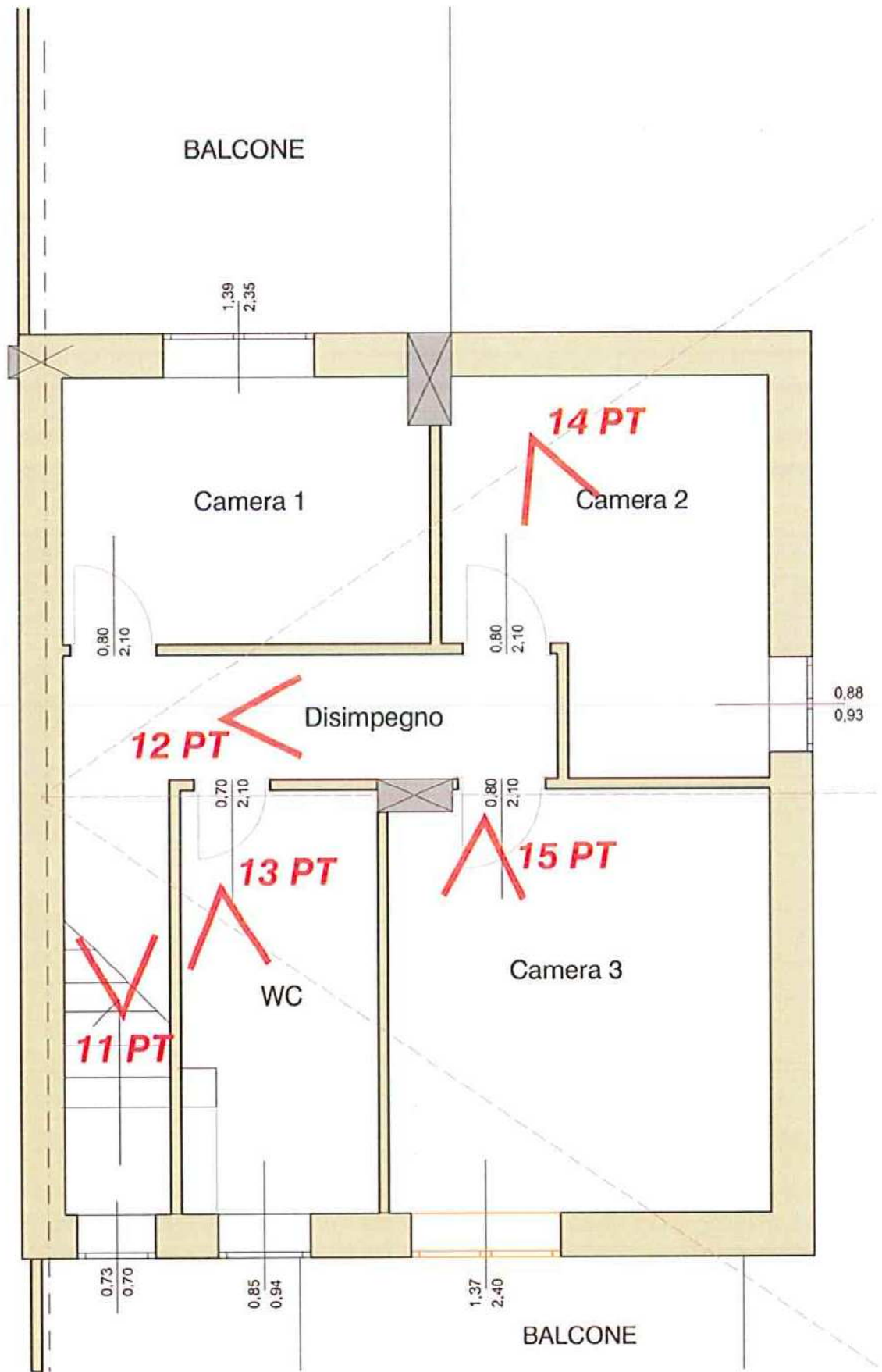
RILIEVO FOTOGRAFICO PIANO PT







RILIEVO FOTOGRAFICO PIANO PP





RILIEVO FOTOGRAFICO ESTERNO

