

Documentazione Fotografica

Bene posto in Comune di Porcari (Lu)

Abitazione – Foglio, 7 particella, 9 sub. 11



Vista lato strada con indicata la disposizione presunta



Ingresso

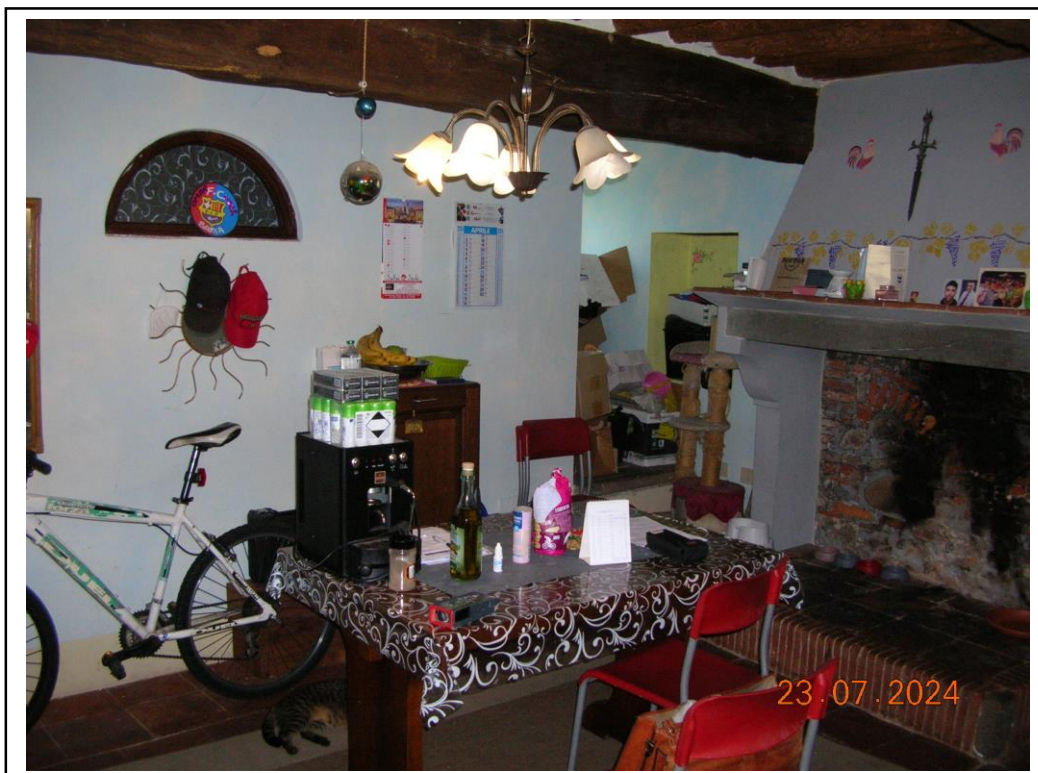


Porta interna d'accesso

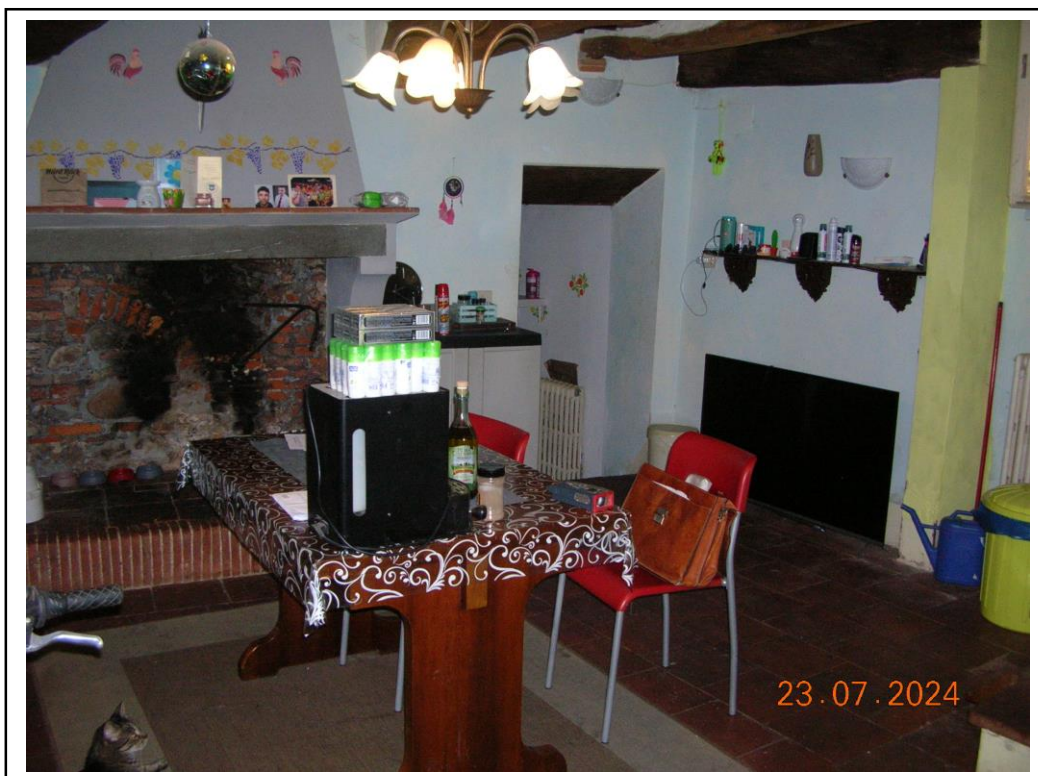


Scala d'accesso alla sala d'ingresso

Piano Terra

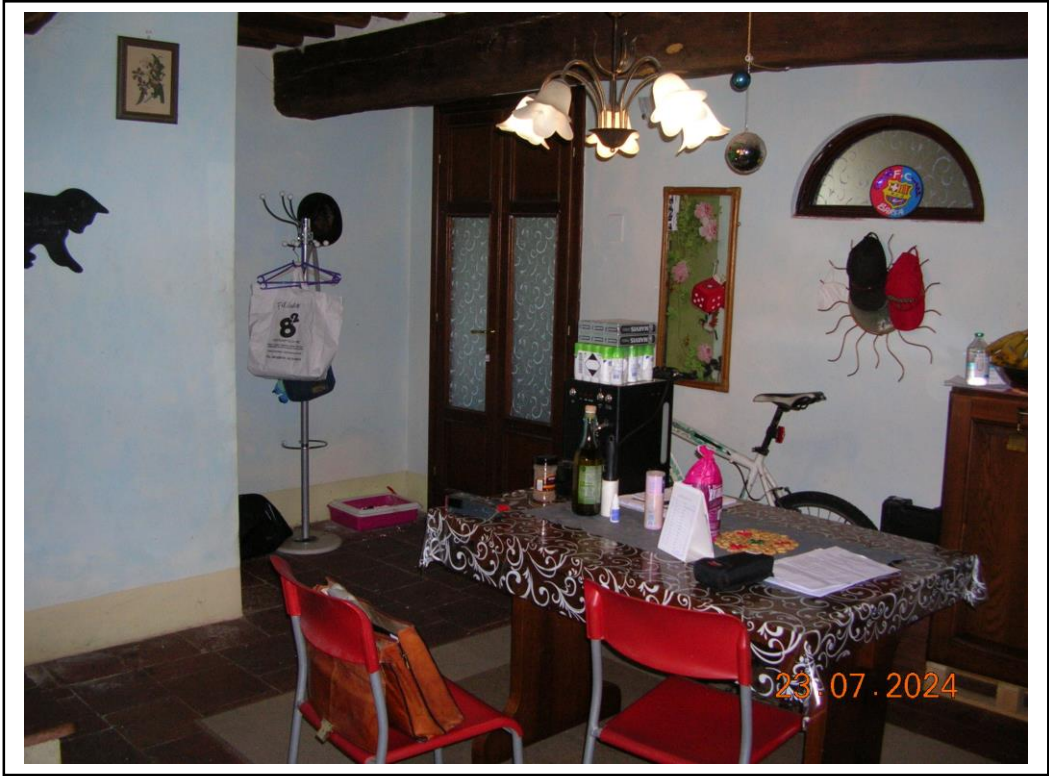


Sala d'ingresso



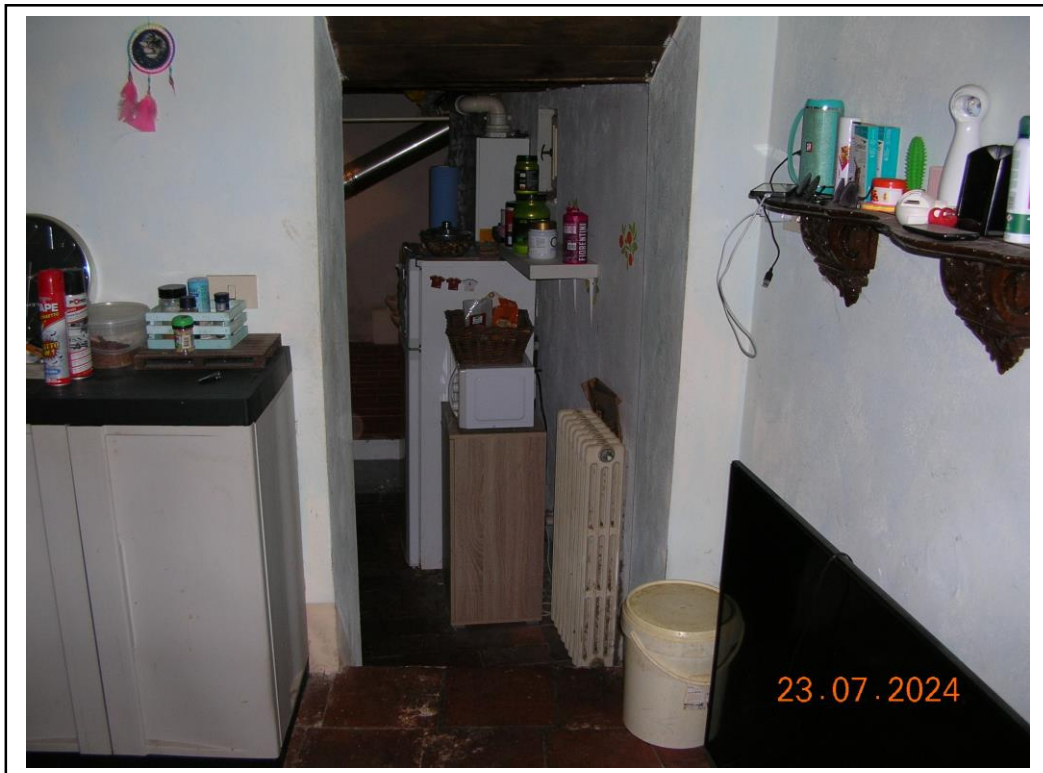


Sala d'ingresso





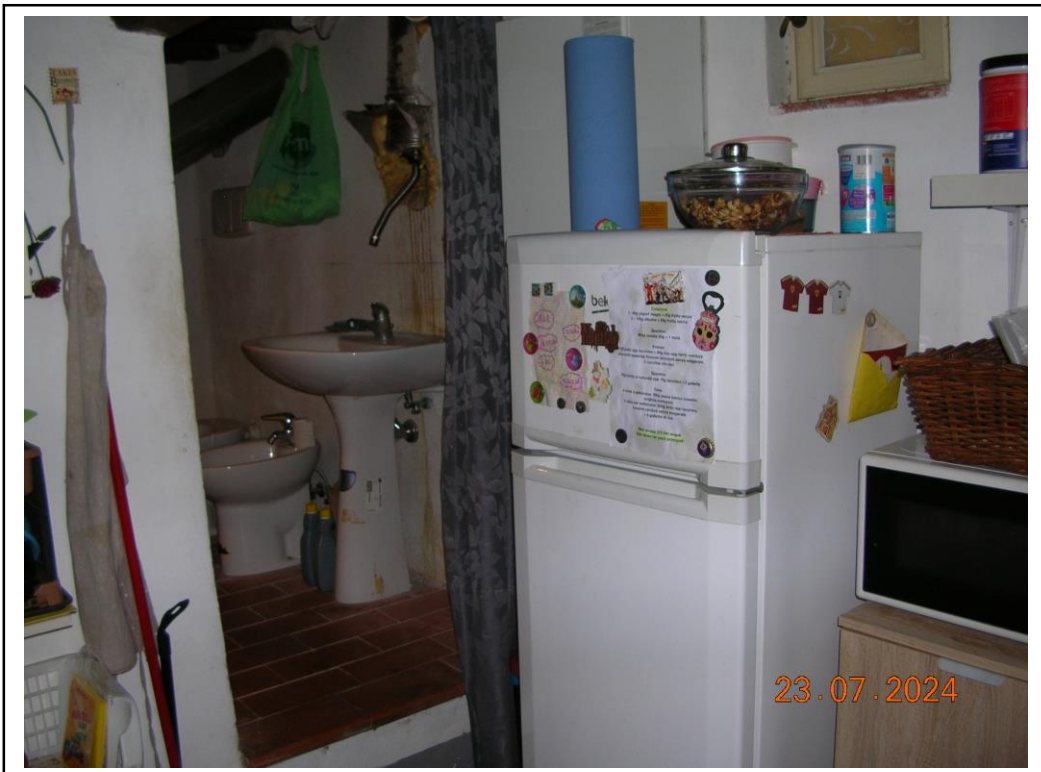
Sottoscala



Scala di accesso alla cucina



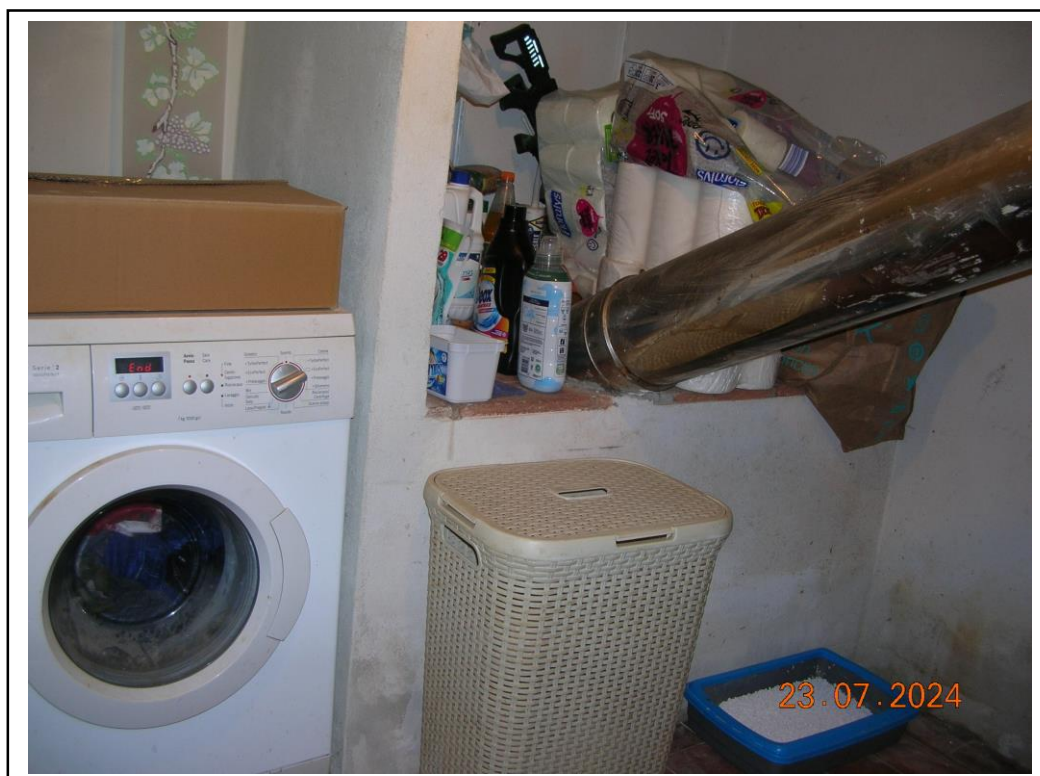
Cucina Piano seminterrato



Cucina



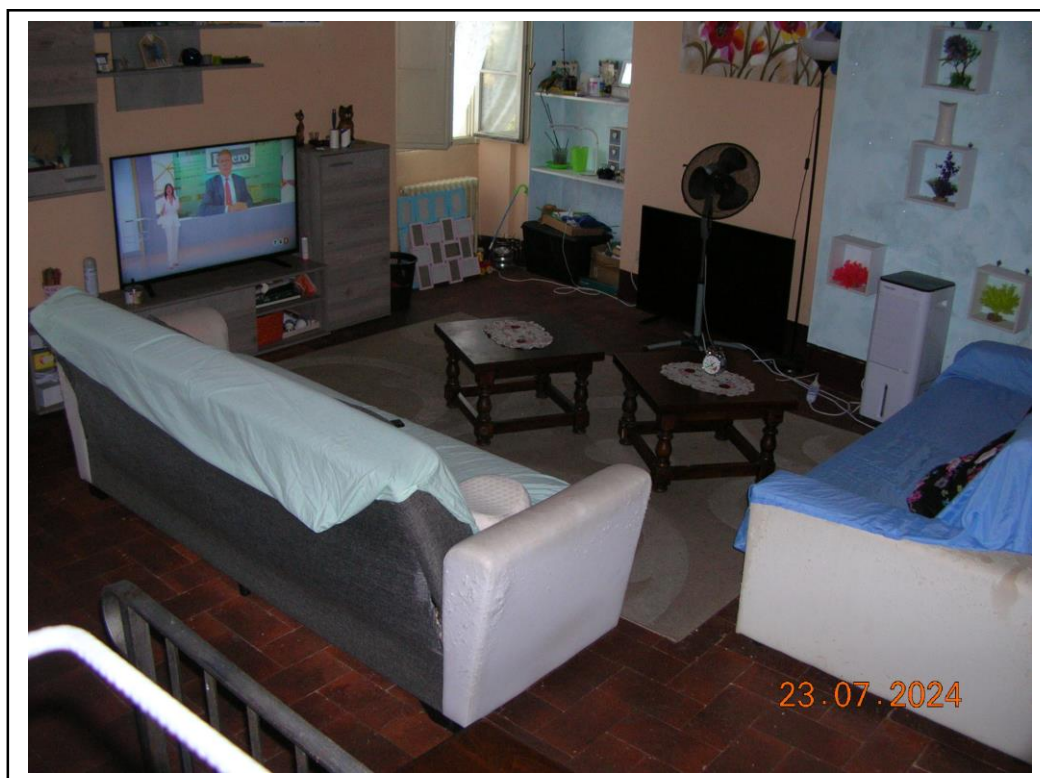
Servizio igienico e Lavanderia adiacenti alla cucina



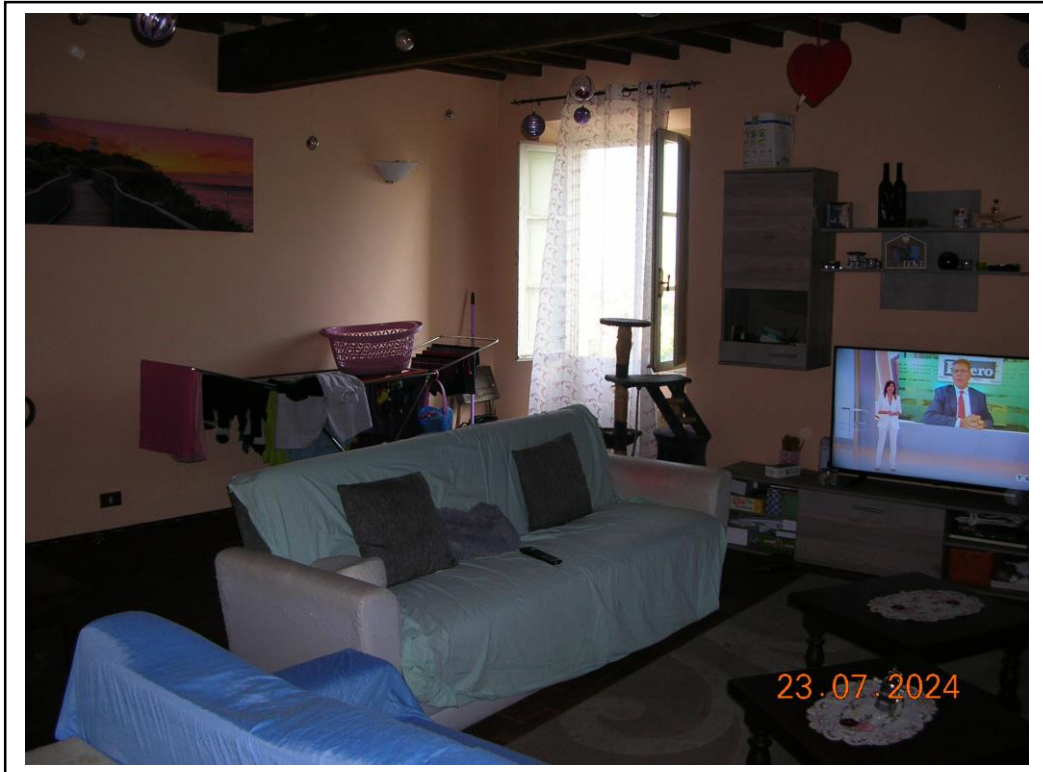
Piano Primo



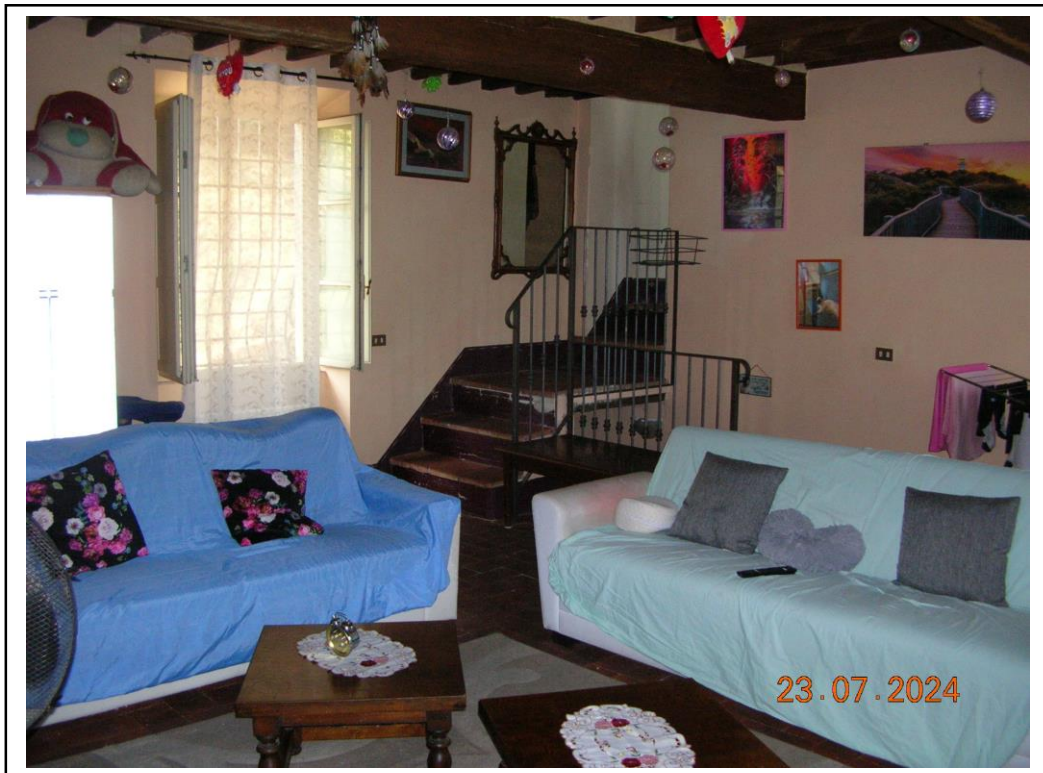
Scala di accesso alla sala



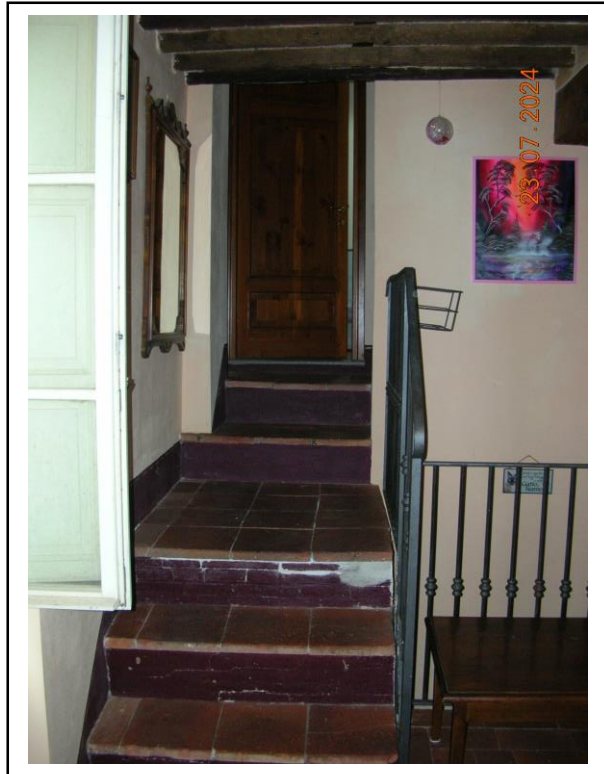
Sala P. 1°



Sala P. 1°



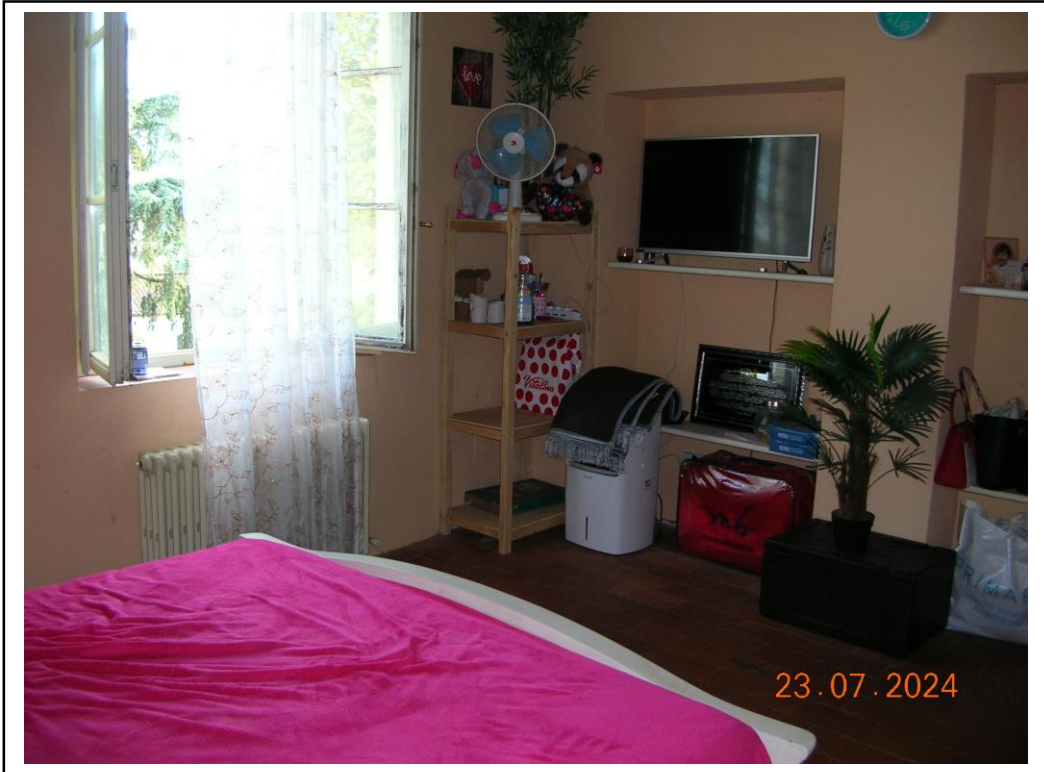
Sala



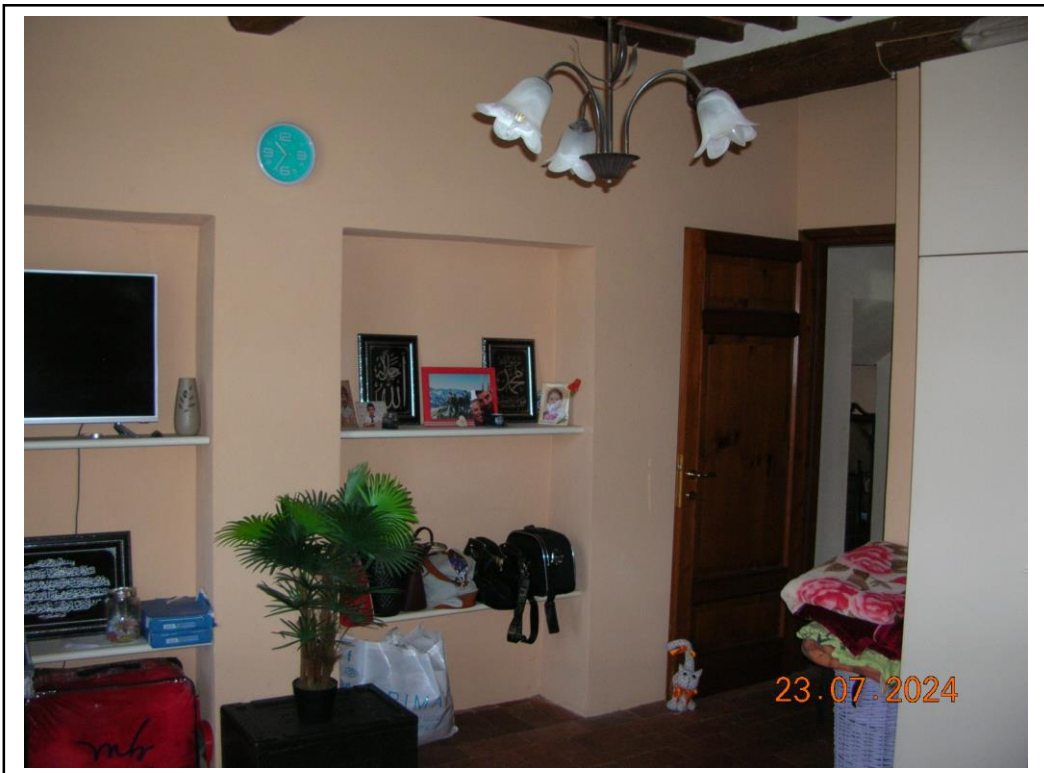
Scala d'accesso alla camera e al bagno



Camera



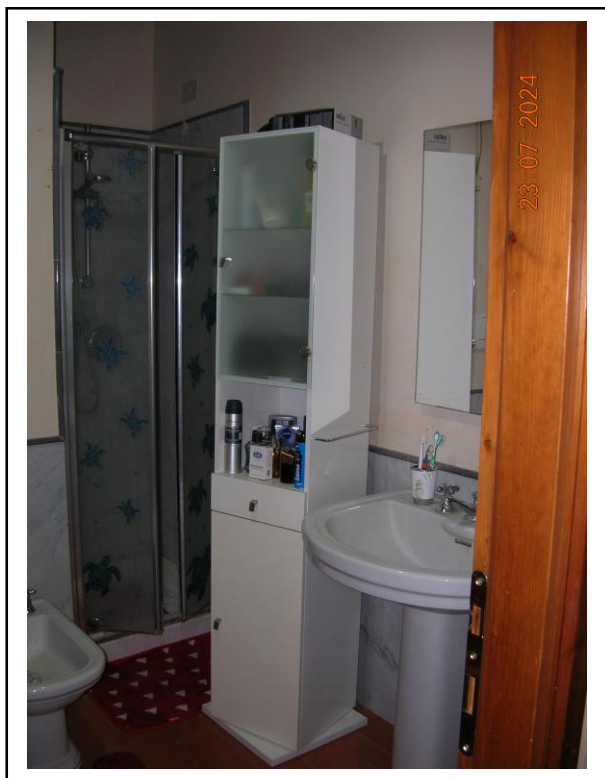
Camera



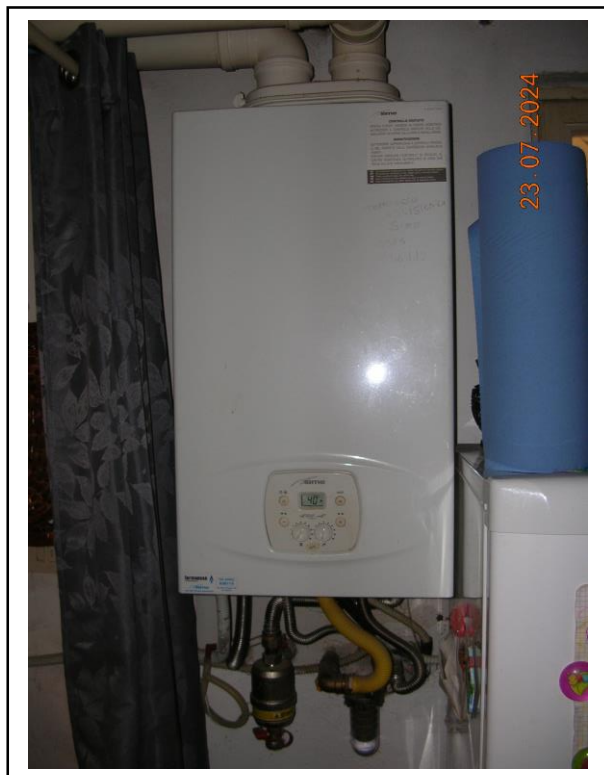
Camera



Bagno P. 1°



Impianti



Caldaia interna posta in cucina



Contatori Enel ubicati in Via Torre



Contatori metano ubicati in Via Torre



Contatori Acque ubicati in Via Torre