

Allegato 3
- Rilievo architettonico stato dei luoghi -



LOTTE DI VENDITA



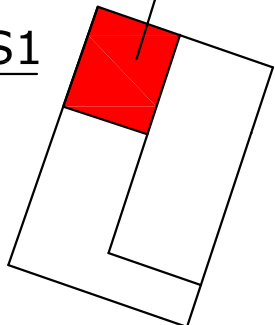
LOTTO 1



LOTTO 2

PIANO S1

part. 851 sub 2



part. 851 sub 6

PIANO T

PART. 1724

851
corte comune

part. 851 sub 2

PART. 1511

PART. 1464

part. 851 sub 7
part. 1676 sub 2

part. 1676 sub 1

part. 851 sub 8

1/4 FG 50 PART. 899



1/4 FG 50 PART. 899

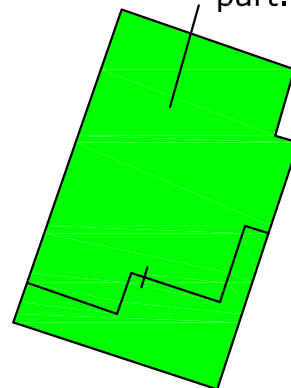


PART. 899

1676

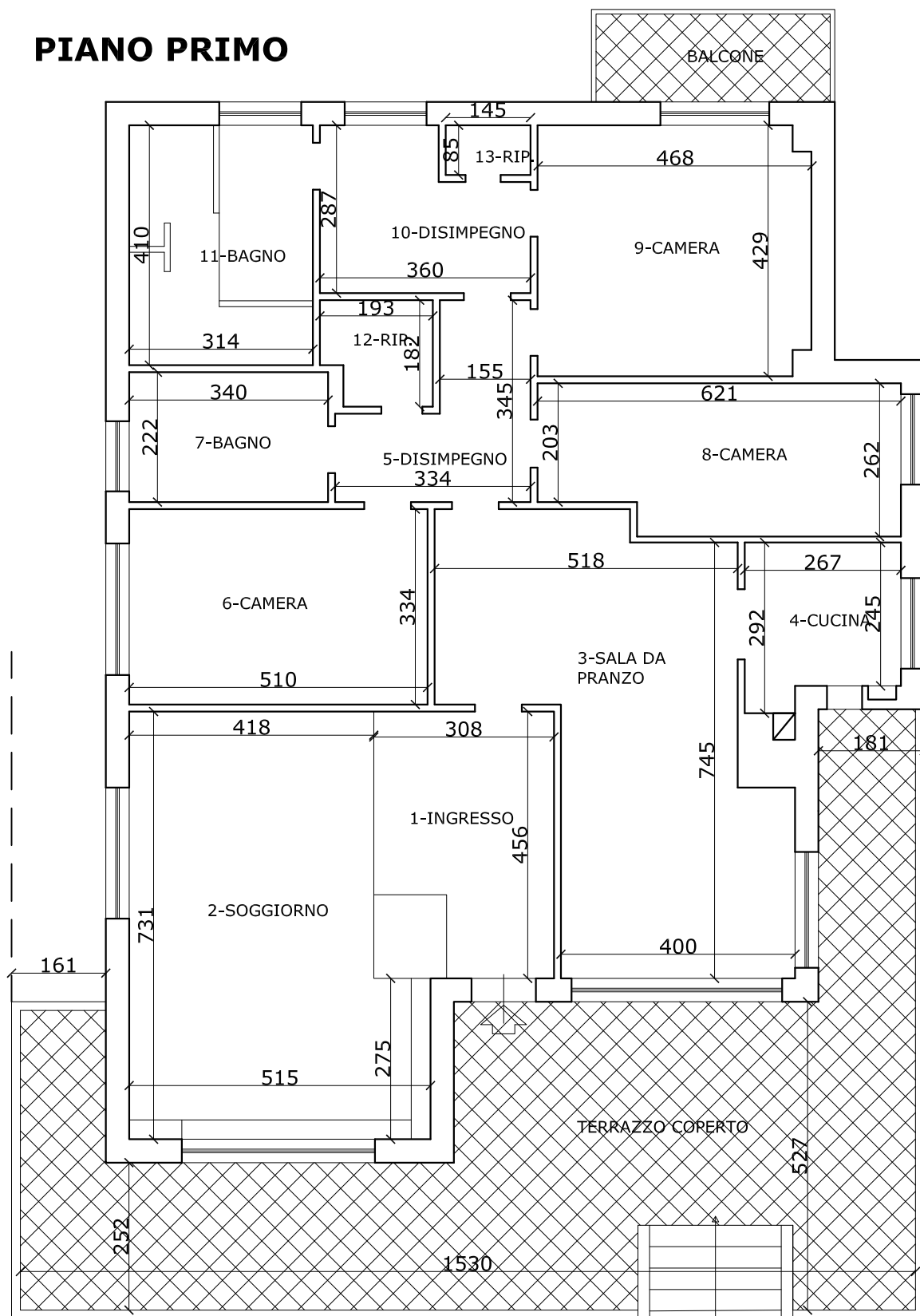
VIA MONTENERO

PIANO 1



LOTTO 1

PIANO PRIMO



APPARTAMENTO

MQ LORDI 215,55

TERRAZZO COPERTO 80 X 0.25 = 20

SUP. CONVENZIONALE MQ LORDI 235,50

FG. 50 PART. 851 SUB 8 (EX SUB 4)

graffato

FG. 50 PART. 1676 SUB 1

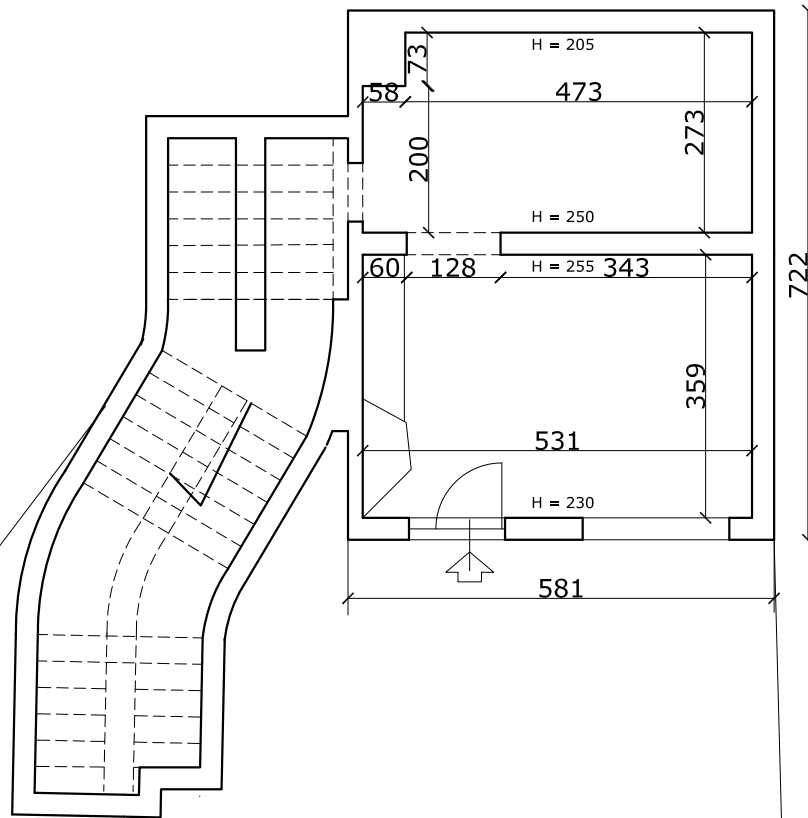
LOTTO 1

PIANO TERRA

LOCALE MAGAZZINO

MQ LORDI 70,00

SUP. CONVENZIONALE 70,00 X 0.35 = 24.50



CORTE ESCLUSIVA
GIARDINO

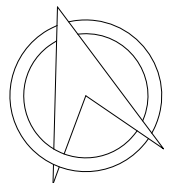
(FG.50 PART. 1676 SUB 1)

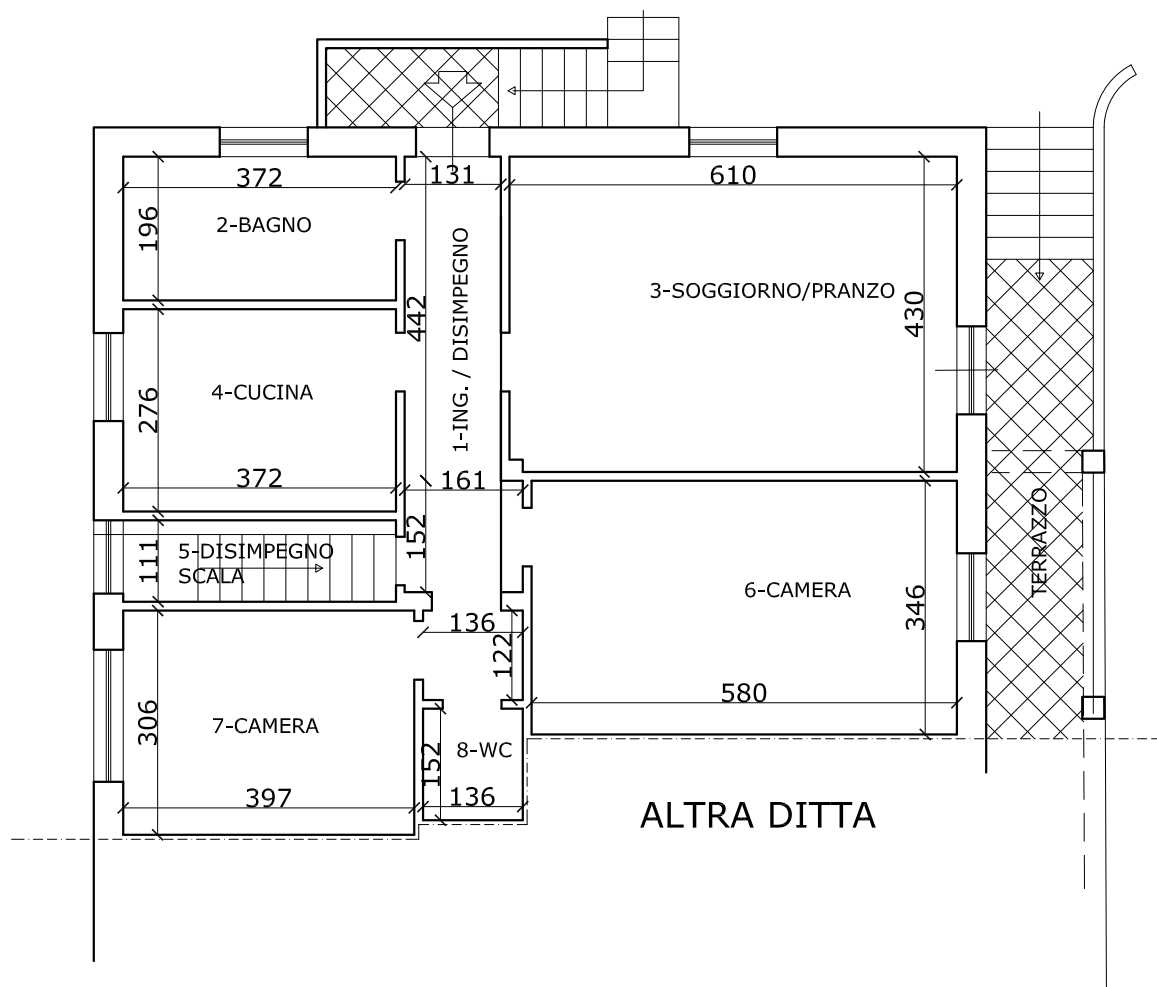
FG. 50 PART. 851 SUB 7

graffato

FG. 50 PART. 1676 SUB 2

N

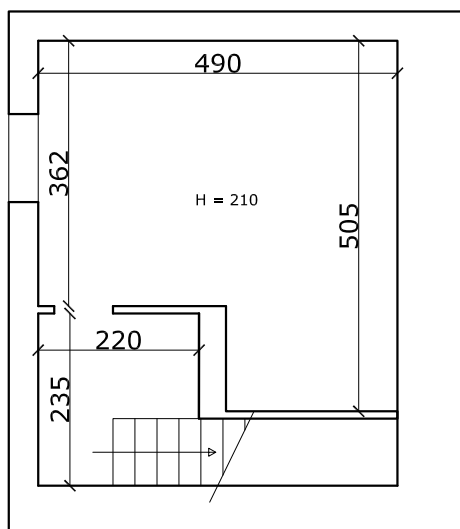




FG. 50 PART. 851 SUB 2

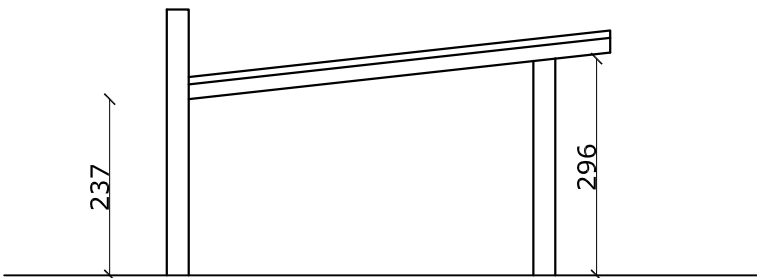
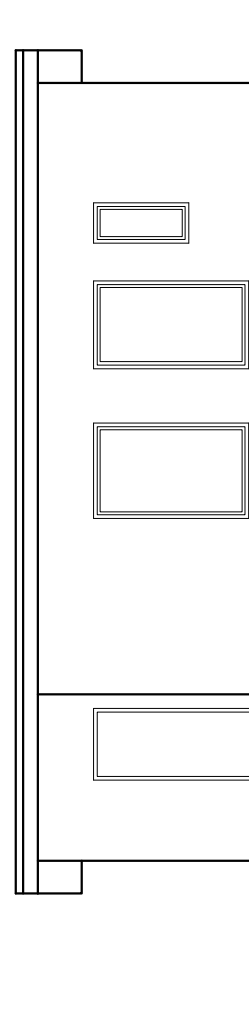
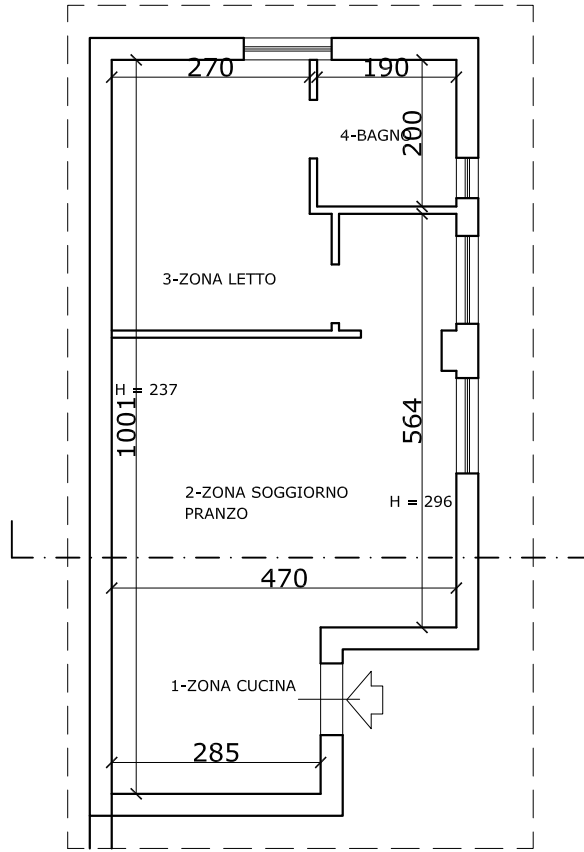
APPARTAMENTO
 MQ LORDI 109,4
 BALCONI 20,40 X 0.25 = 5,10

PIANO S1



APPARTAMENTO
 MQ LORDI 35,90
 cantina 36,00 X 0.25 = 9,00 mq

SUP. CONVENZIONALE
 TOTALE MQ LORDI 123,50



MQ LORDI 52,00

FG. 50 PART. 851 SUB 6

