

Foto n.1 – Immobile Fg 1 – part. 809 - sub 5

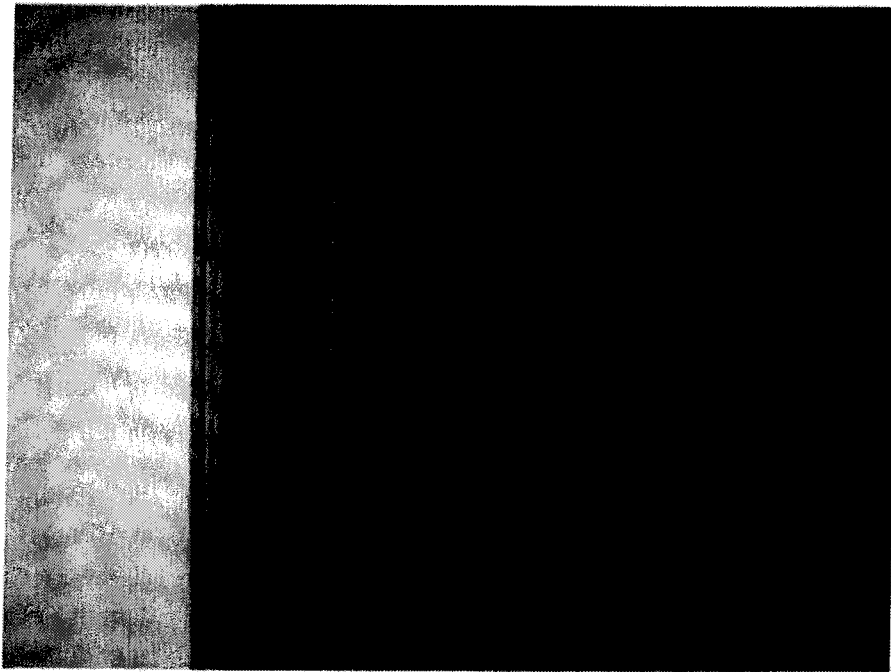


Foto n.2 – Immobile Fg 1 – part. 809 - sub 5

*[Handwritten signature]*

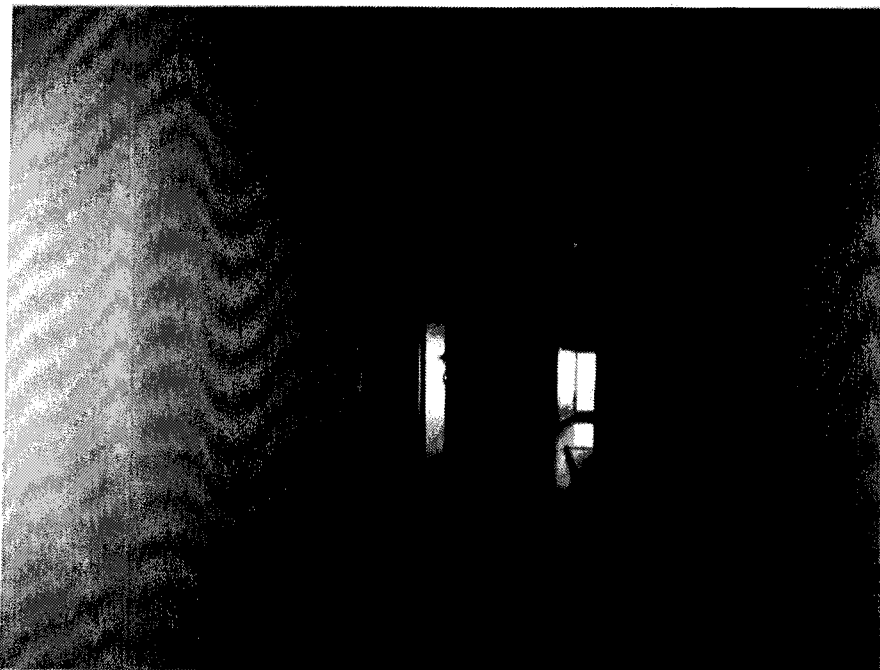


Foto n.3 – Immobile Fg 1 – part. 809 - sub 5

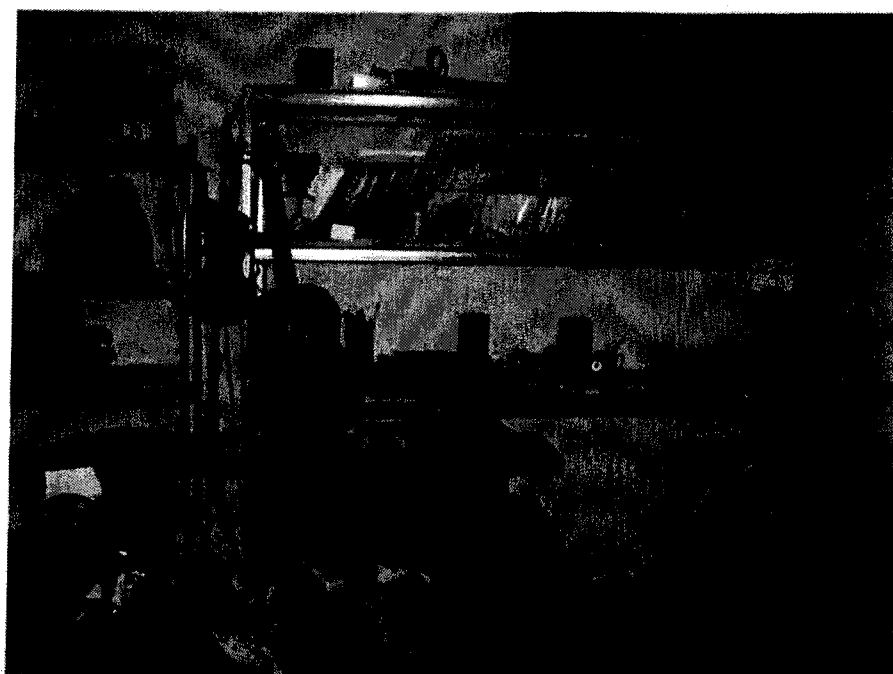


Foto n.4 – Immobile Fg 1 – part. 809 - sub 5

46

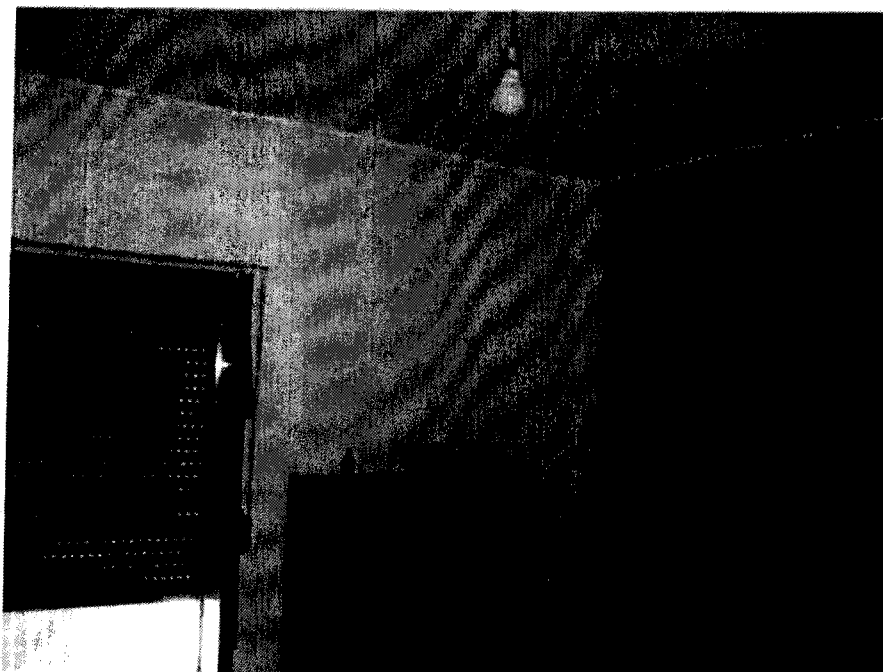


Foto n.5 – Immobile Fg 1 – part. 809 - sub 5



Foto n.6 – Immobile Fg 1 – part. 809 - sub 5

A handwritten signature or mark, consisting of several loops and a long horizontal stroke, located in the bottom right corner of the page.

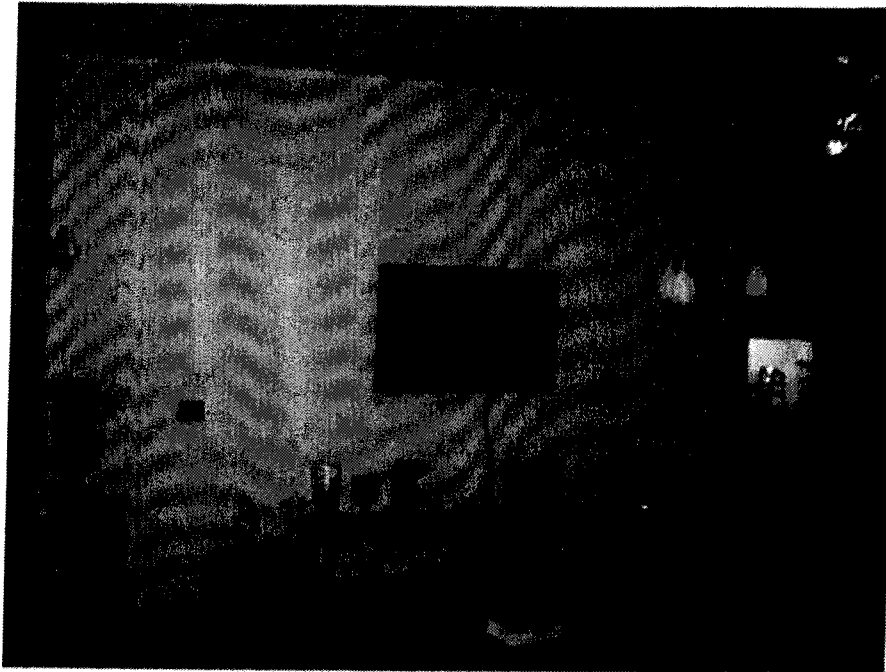


Foto n.7 – Immobile Fg 1 – part. 809 - sub 5

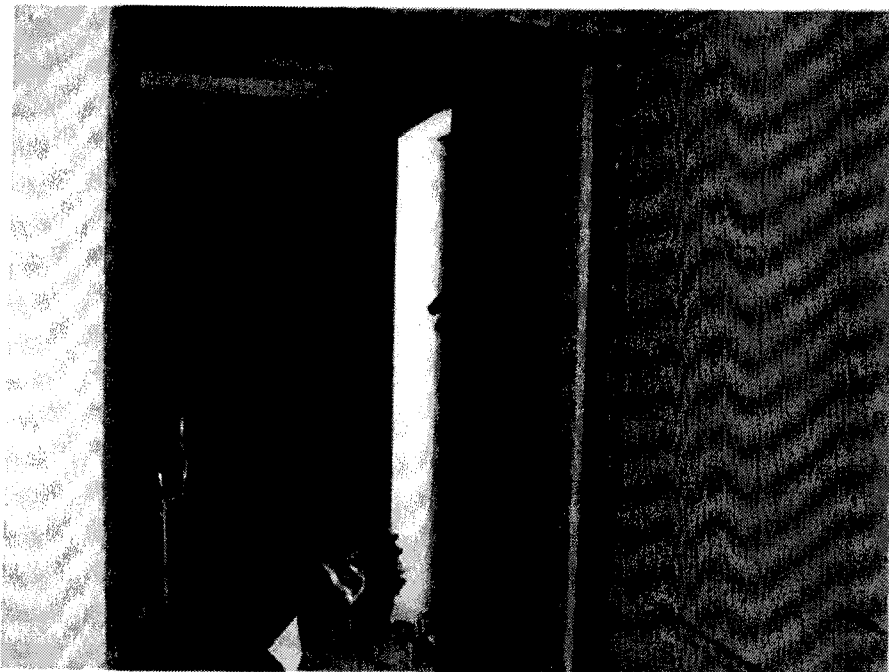


Foto n.8 – Immobile Fg 1 – part. 809 - sub 6



Foto n.9 – Immobile Fg 1 – part. 809 - sub 6

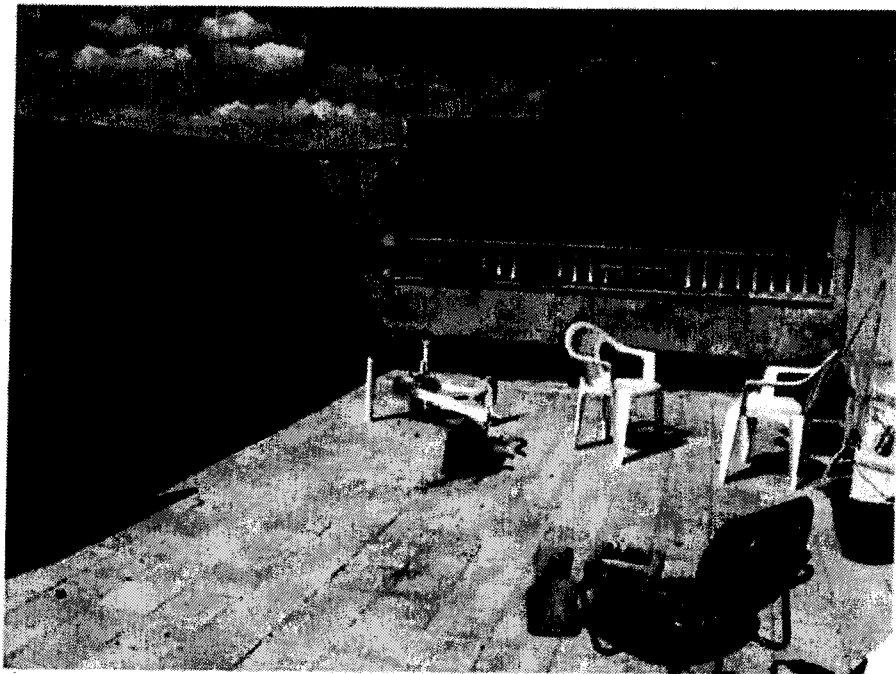


Foto n.10 – Immobile Fg 1 – part. 809 - sub 6

A handwritten signature or mark, possibly a stylized 'S' or 'L', located in the bottom right corner of the page.

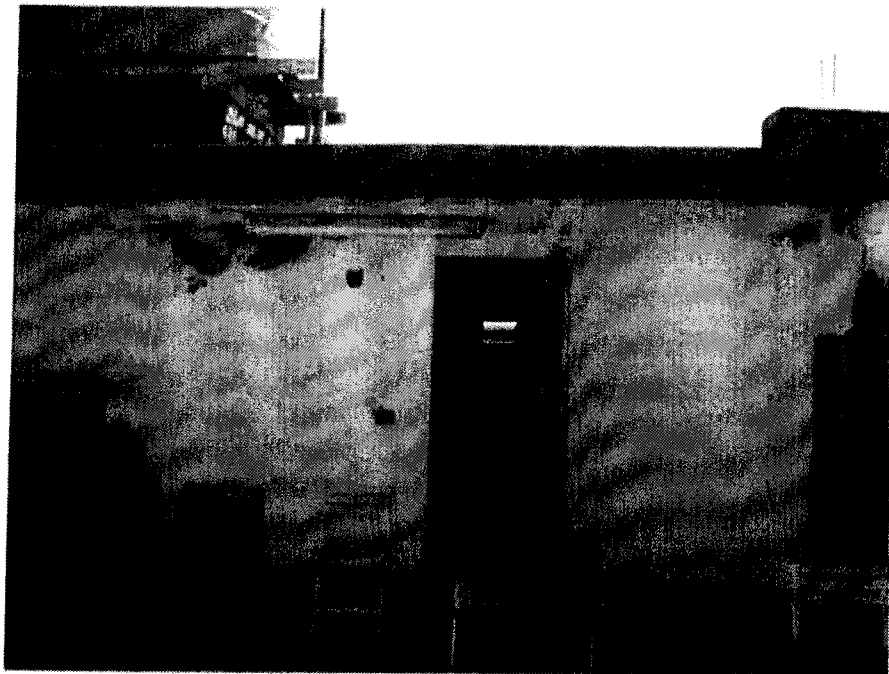


Foto n.11 – Immobile Fg 1 – part. 809 - sub 6

*[Handwritten signature]*